

JUN 1, 1998 6:36AM ..... B.O.T. HOBBS, NM

COMPANY <i>Collins &amp; Ware</i>	CASING	NO. B17	AP. 1/1	SHORT
WELL NAME & NUMBER <i>State A #5</i>	SIZE <i>7"</i>	LINER	UPPER TUBING	LOWER TUBING
FIELD	WEIGHT <i>28**</i>	<i>15.5-20</i>	<i>4.7</i>	<i>4.7</i>
COUNTY <i>Lea</i>	GRADE		<i>11-80</i>	<i>5-55</i>
STATE <i>NM</i>	THREAD		<i>BU 8rd</i>	<i>BU 8rd</i>
DATE <i>05-29-98</i>	<input type="checkbox"/> NEW <input checked="" type="checkbox"/> W.O.	DEPTH	<i>Top 5985</i>	

ITEM	DESCRIPTION	MAX. O.D. INCHES	MIN. I.D. INCHES	LENGTH FEET	DEPTH FEET
	<i>Long String 05-22-85</i>				
1	<i>2 1/8 Bu 8rd Wireline Entry Guide</i>			<i>.40</i>	<i>6345.49</i>
2	<i>2 1/8 Bu 8rd BPC Seating Nipple</i>		<i>1.815</i>	<i>.93</i>	<i>6345.09</i>
	<i>w/1.815 Profile</i>				<i>6344.16</i>
3	<i>10 Ft. 2 1/8 Bu 8rd N-80 Sub</i>			<i>9.97</i>	<i>6334.19</i>
4	<i>2 1/8 Bu 8rd BPC Seating Nipple</i>		<i>1.825</i>	<i>.92</i>	<i>6333.27</i>
	<i>w/1.825 Profile</i>				
5	<i>10 Ft. 2 1/8 Bu 8rd N-80 Sub</i>			<i>9.98</i>	<i>6323.29</i>
6	<i>4" NU 8rd Box X 2 1/8 Bu 8rd</i>			<i>.50</i>	<i>6322.79</i>
	<i>Pin X-over</i>				
7	<i>4" NU 8rd X GET Millout Ext.</i>			<i>5.63</i>	<i>6317.16</i>
8	<i>4544 Retriever DB Lock-Set</i>			<i>2.15</i>	<i>6310.00</i>
	<i>Retrievable Casing Packer</i>				
A1	<i>40-25 Model B22 Anchor Seal</i>			<i>2.55</i>	<i>6309.55</i>
	<i>Area w/2 1/8 Bu 8rd &amp; Seal Units</i>				
A2	<i>545 2 1/8 Bu 8rd N-80 Tubing</i>			<i>341.41</i>	<i>5968.14</i>
A3	<i>47-02 2 1/8 X 2.68 Model A5</i>			<i>11.14</i>	<i>5957.00</i>
	<i>Double Grip Hydrostatic Dual Pack</i>				
A4	<i>545 2 1/8 Bu 8rd N-80</i>			<i>5957.00</i>	<i>00.00</i>
	<i>Short String 05-29-98</i>				
B1	<i>2 1/8 Bu 8rd Wireline Entry Guide</i>			<i>.41</i>	<i>5968.14</i>
B2	<i>2 1/8 Bu 8rd BPC Seating Nipple</i>		<i>1.815</i>	<i>.92</i>	<i>5967.73</i>
	<i>w/1.815 Profile</i>				<i>5966.81</i>
C1	<i>845 3-55 1" Tubing</i>	<i>1.582</i>	<i>1.000</i>	<i>252.87</i>	<i>6208.87</i>
C2	<i>Model K Anchor Seal Nipple 2.68</i>	<i>3.00</i>	<i>2.00</i>	<i>1.64</i>	<i>5956.00</i>
C3	<i>1" Pin Down w/2 1/8 Bu 8rd Box X Pin</i>	<i>2.625</i>	<i>.769</i>	<i>.73</i>	<i>5954.00</i>
C4	<i>4 ft Perforated Sub 2 1/8 Bu 8rd 5-55</i>	<i>2.938</i>	<i>1.995</i>	<i>4.16</i>	<i>5953.83</i>
C5	<i>Blank Plug w/2 1/8 Bu 8rd Box X Pin</i>	<i>2.625</i>	<i>N/A</i>	<i>.76</i>	<i>5949.47</i>
C6	<i>2543 2 1/8 Bu 8rd 5-55 Tubing</i>	<i>2.938</i>	<i>1.995</i>	<i>64.85</i>	<i>5948.71</i>
C7	<i>4 ft Perforated Sub 2 1/8 Bu 8rd 5-55</i>	<i>2.938</i>	<i>1.995</i>	<i>3.97</i>	<i>5883.86</i>
C8	<i>2 1/8 Bu 8rd Seating Nipple</i>	<i>2.938</i>		<i>1.10</i>	<i>5879.89</i>
C9	<i>188 542 1/8 Bu 8rd 5-55 Tubing</i>	<i>2.938</i>	<i>1.995</i>	<i>5850.60</i>	<i>5828.79</i>
C10	<i>10 ft Bu 8rd 5-55 Sub</i>	<i>2.938</i>	<i>1.995</i>	<i>10.15</i>	<i>28.19</i>
C11	<i>10 ft Bu 8rd 5-55 Sub</i>	<i>2.938</i>	<i>1.995</i>	<i>10.16</i>	<i>18.04</i>
C12	<i>4 ft Bu 8rd 5-55 Sub</i>	<i>2.938</i>	<i>1.995</i>	<i>3.95</i>	<i>7.92</i>
C13	<i>4 ft Bu 8rd 5-55 Sub</i>	<i>2.938</i>	<i>1.995</i>	<i>3.97</i>	<i>3.97</i>
					<i>00.00</i>

PREPARED FOR *Tommy Willyard*PREPARED BY *Tommy Pool*OFFICE *Hobbs NM*PHONE *505-327-4147*

**BAKER**  
PACKERS  
COMPLETION SYSTEMS

6023 NAVIGATION BOULEVARD  
P.O. BOX 3048 • HOUSTON, TEXAS 77001  
TELEPHONE (713) 923-9351 • TELEX 76-2833  
A BAKER OIL TOOLS COMPANY



A Subsidiary of  
John West Engineering Company, Inc.

412 N. DAL PASO  
HOBBS, NEW MEXICO 88240

Collins & Ware, Inc.

Packer leakage test on the State A #5, Lea County, NM

Well shut in October 25, 1998 at 7:30 AM.

	Pumping	Flowing
October 26, 1998		
<u>9 AM Test tubing pressure w/dead weights</u>	<u>395 psi</u>	<u>539 psi</u>
<u>11 AM Test tubing pressure w/dead weights</u>	<u>432 psi</u>	<u>549 psi</u>
<u>12 AM Test tubing pressure w/dead weights</u>	<u>434 psi</u>	<u>551 psi</u>
<u>1 PM test tubing pressure w/dead weights</u>	<u>441 psi</u>	<u>554 psi</u>

Dead weight tests performed with casing valve open.

Start 24 hour test with Blinebry side open and pumping.  
Casing closed.

	Pumping	Flowing
October 27, 1998		
<u>1 PM Test tubing pressure w/dead weights</u>	<u>43 psi gauge</u>	<u>609 psi</u>

Pressure on pumping side dropped down because casing valve was shut causing fluid to fill above bottom of pumping tubing causing pressure drop.  
Shut down pumping unit and close pumping side.

	44 psi gauge	610 psi
--	--------------	---------

Start 24 hour shut in period. Casing closed.

	Pumping	Flowing
October 28, 1998		
<u>1 PM Test tubing pressure w/dead weights</u>	<u>62 psi gauge</u>	<u>646 psi</u>

Tests performed with casing valve closed.

Start 24 hour test on flowing side. Casing closed.

	Pumping	Flowing
October 29, 1998		
<u>1 PM Test tubing pressure w/gauge</u>	<u>48 psi</u>	<u>58 gauge</u>

Casing valve was closed.

Test completed.  
Take well off of test.

Dead weight unit 50 to 5,000 PSI range, Serial # 9856.  
Pressure recorder 0 to 5,000 PSI range, Serial # M6033.

Robert Sonnamaker  
Robert Sonnamaker, West-Test, Inc. Manager

This form is not to  
be used for reporting  
packer leakage tests  
in Northwest New Mexico

## SOUTHEAST NEW MEXICO PACKER LEAKAGE TEST

Operator <b>Collins &amp; Ware, Inc.</b>			Lease <b>State "A"</b>			Well No. <b>5</b>	
LOCATION OF WELL	Unit <b>A</b>	Sec. <b>32</b>	Twp. <b>18 South</b>	Rge <b>38 East</b>	County <b>Lea</b>		
NAME OF RESERVOIR OR POOL			TYPE OF PROD. (Oil or Gas)	METHOD OF PROD. FLOW, ART LIFT	PROD. MEDIUM (Tbg or Csg)	CHOKE SIZE	
Upper Compl.	<b>Blinebry</b>		<b>Oil</b>	<b>Art. Lift</b>	<b>Tbg</b>	<b>Open</b>	
Lower Compl.	<b>Drinkard</b>		<b>Gas</b>	<b>Flow</b>	<b>Tbg.</b>	<b>Open</b>	

## FLOW TEST NO. 1

Both zones shut-in at (hour, date): 7:30 A.M. October 25, 1998Well opened at (hour, date): 1:00 P.M. October 26, 1998

	Upper Completion	Lower Completion
Indicate by (X) the zone producing .....	<u>X</u>	<u>(With csg. open)</u>
Pressure at beginning of test .....	<u>441</u>	<u>554</u>
Stabilized? (Yes or No) .....	<u>Yes</u>	<u>Yes</u>
Maximum pressure during test .....	<u>435</u>	<u>609</u>
Minimum pressure during test .....	<u>43</u>	<u>554</u>
Pressure at conclusion of test .....	<u>43</u>	<u>609</u>
Pressure change during test (Maximum minus Minimum) .....	<u>392</u>	<u>55</u>
Was pressure change an increase or a decrease? .....	<u>Decrease</u>	<u>Decrease</u>
Well closed at (hour, date): <u>1:00 PM October 27, 1998</u>	Total Time On Production <u>24 Hours</u>	
Oil Production During Test: <u>2</u> bbls; Grav. <u>40.9</u>	Gas Production During Test <u>62</u> MCF; GOR <u>31,000</u>	

Remarks: Pumping side logged off with fluid.

(Continue on reverse side)

## FLOW TEST NO. 2

	Upper Completion	Lower Completion
Well opened at (hour, date): <u>1:25 PM October 28, 1998</u>		
Indicate by (X) the zone producing .....		<u>X</u>
Pressure at beginning of test .....	<u>62</u>	<u>646</u>
Stabilized? (Yes or No) .....	<u>Yes</u>	<u>Yes</u>
Maximum pressure during test .....	<u>62</u>	<u>646</u>
Minimum pressure during test .....	<u>48</u>	<u>58</u>
Pressure at conclusion of test .....	<u>48</u>	<u>58</u>
Pressure change during test (Maximum minus Minimum) .....	<u>14</u>	<u>588</u>
Was pressure change an increase or a decrease? .....	<u>Decrease</u>	<u>Decrease</u>
Well closed at (hour, date): <u>1:15 PM October 29, 1998</u>	Total Time On Production <u>24 Hours</u>	
Oil Production During Test: <u>1</u> bbls; Grav. <u>40.9</u>	Gas Production During Test <u>203</u> MCF; GOR <u>203,000</u>	
Remarks: .....		

I hereby certify that the information herein contained is true and complete to the best of my knowledge.

Approved \_\_\_\_\_ 19 \_\_\_\_\_  
New Mexico Oil Conservation Division

By \_\_\_\_\_  
Title \_\_\_\_\_

Operator Collins & Ware, Inc.  
By Robert Sonnamaker  
Title West-Test, Inc., Manager  
Date 11-4-98

## SOUTHEAST NEW MEXICO PACKER LEAKAGE TEST INSTRUCTIONS

1. A packer leakage test shall be commenced on each multiply completed well within seven days after actual completion of the well, and annually thereafter as prescribed by the order authorizing the multiple completion. Such tests shall also be commenced on all multiple completions within seven days following recompletion and/or chemical or fracture treatment, and whenever remedial work has been done on a well during which the packer or the tubing have been disturbed. Tests shall also be taken at any time that communication is suspected or when requested by the Division.

2. At least 72 hours prior to the commencement of any packer leakage test, the operator shall notify the Division in writing of the exact time the test is to be commenced. Offset operators shall also be so notified.

3. The packer leakage test shall commence when both zones of the dual completion are shut-in for pressure stabilization. Both zones shall remain shut-in until the well-head pressure in each has stabilized and for a minimum of two hours thereafter, provided however, that they need not remain shut-in more than 24 hours.

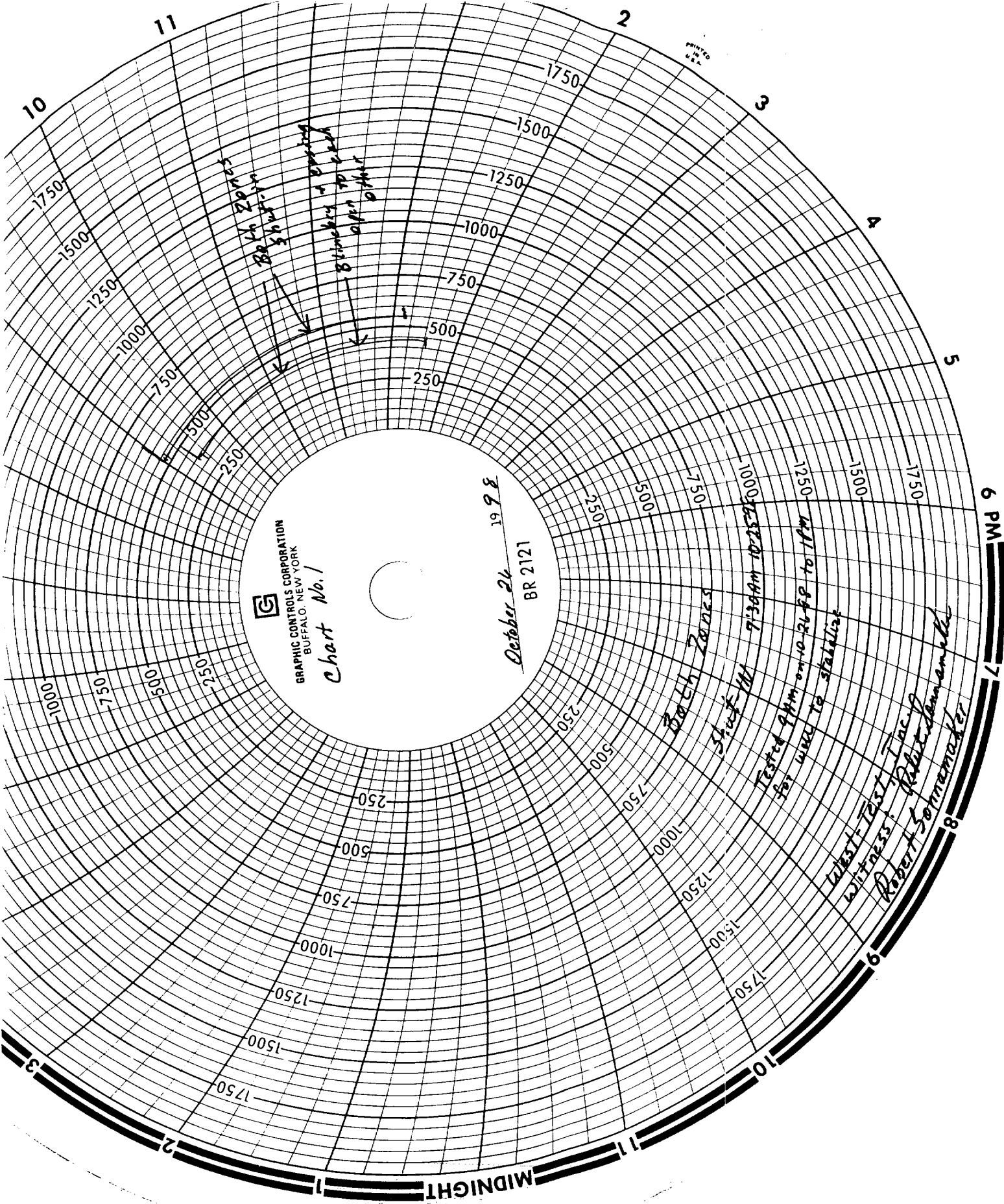
4. For Flow Test No. 1, one zone of the dual completion shall be produced at the normal rate of production while the other zone remains shut-in. Such test shall be continued until the flowing wellhead pressure has become stabilized and for a minimum of two hours thereafter, provided however, that the flow test need not continue for more than 24 hours.

5. Following completion of Flow Test No. 1, the well shall again be shut-in, in accordance with Paragraph 3 above.

6. Flow Test No. 2 shall be conducted even though no leak was indicated during Flow Test No. 1. Procedure for Flow Test No. 2 is to be the same as for Flow Test No. 1 except that the previously produced zone shall remain shut-in while the previously shut-in zone is produced.

7. All pressures, throughout the entire test, shall be continuously measured and recorded with recording pressure gauges, the accuracy of which must be checked with deadweight tester at least twice, once at the beginning and once at the end, of each flow test.

8. The results of the above-described tests shall be filed in triplicate within 15 days after completion of the test. Tests shall be filed with the appropriate District Office of the New Mexico Oil Conservation Division on Southeast New Mexico Packer Leakage Test Form Revised 11-01-38, together with the original pressure recording gauge charts with all the deadweight pressures which were taken indicated thereon. In lieu of filing the aforesaid charts, the operator may construct a pressure versus time curve for each zone of each test, indicating thereon all pressure changes which may be reflected by the gauge charts as well as all deadweight pressure readings which were taken. If the pressure curve is submitted, the original chart must be permanently filed in the operator's office. Form C-116 shall also accompany the Packer Leakage Test Form when the test period coincides with a gas-oil ratio test period.



GRAPHIC CONTROLS CORPORATION  
BUFFALO, NEW YORK

Chart No. 1

October 26 1958  
BR 2121

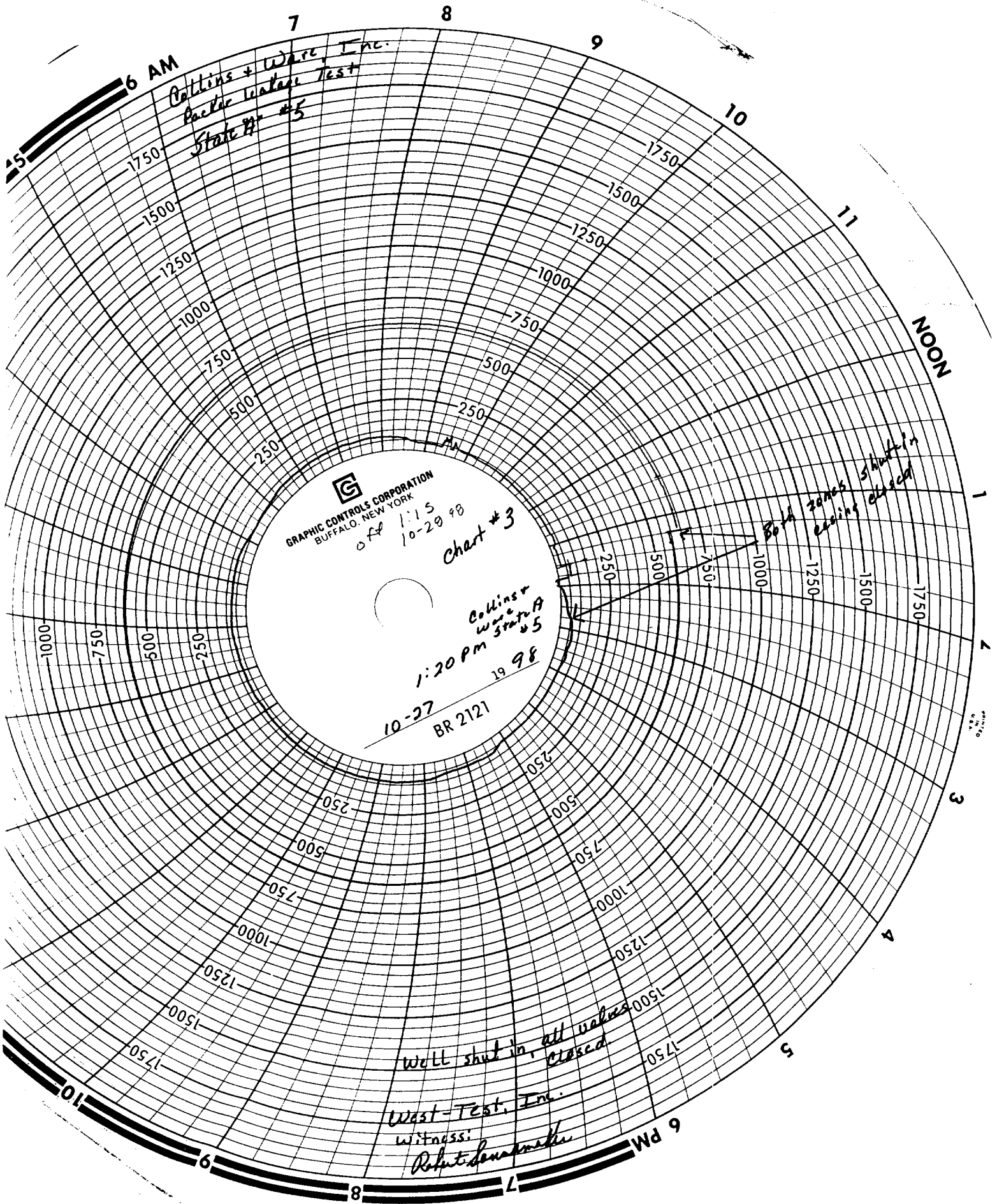
Bath Zones

Shock M

Tested 9 AM on 10-26-58  
for wear to stabilize

Latest Test: Tac 9  
Witness: Robert Sommer

Robert Sommer



Collins + Ware, Inc.  
Packer Leakage Test  
State #5

GRAPHIC CONTROLS CORPORATION  
BUFFALO, NEW YORK

OF 1:15  
10-20 98

Chart #3

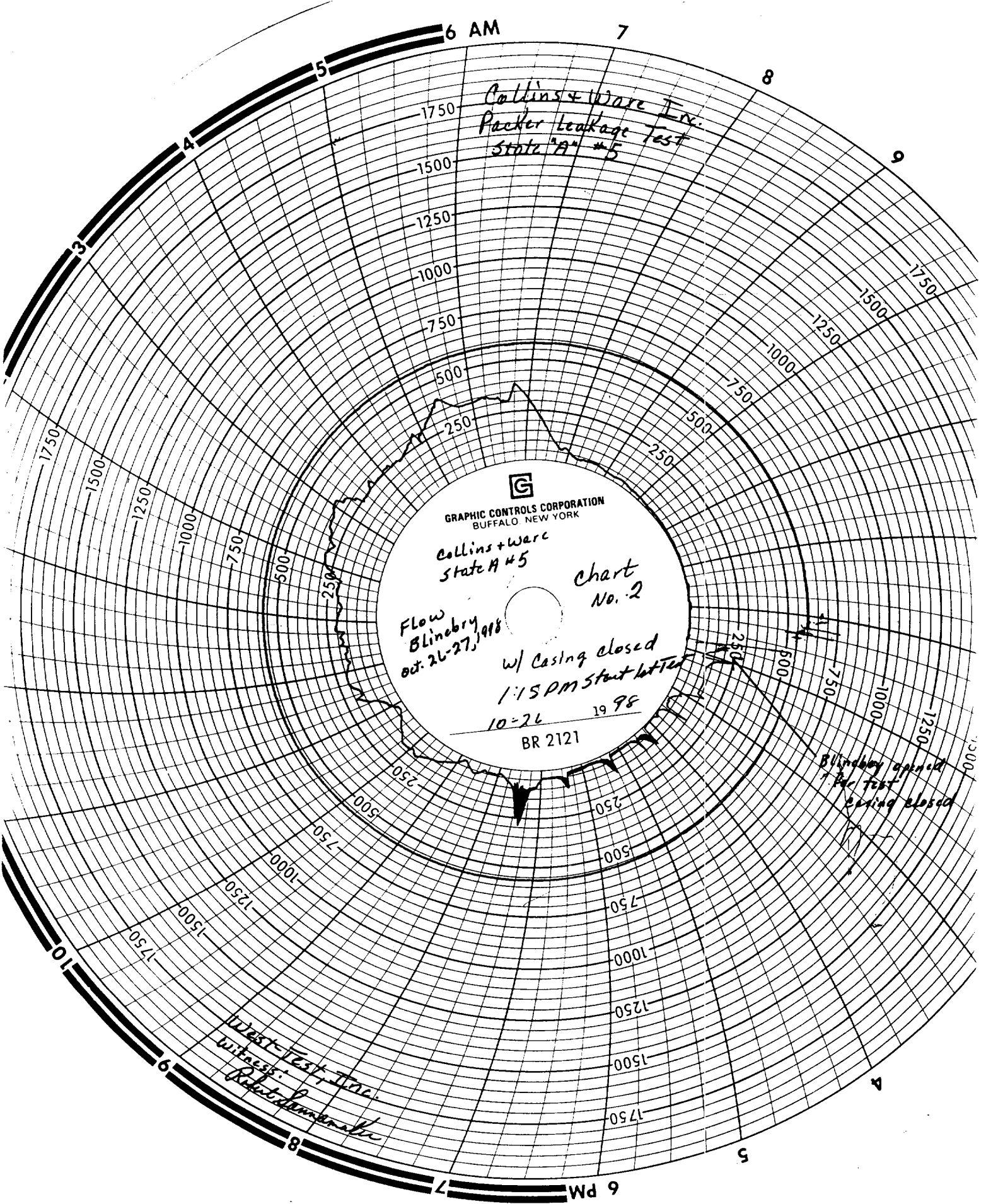
Collins +  
Ware State #5  
1:20 PM 19 98  
10-27  
BR 2121

Both zones shut in  
casing closed

Well shut in, all valves  
closed

West-Test, Inc.

witness:  
Robert J. [signature]



Collins + Ware Inc.  
Packer Leakage Test  
State "A" #5

GRAPHIC CONTROLS CORPORATION  
BUFFALO, NEW YORK

Collins + Ware  
State A #5

Chart  
No. 2

Flow  
Blineby  
Oct. 26-27, 1998

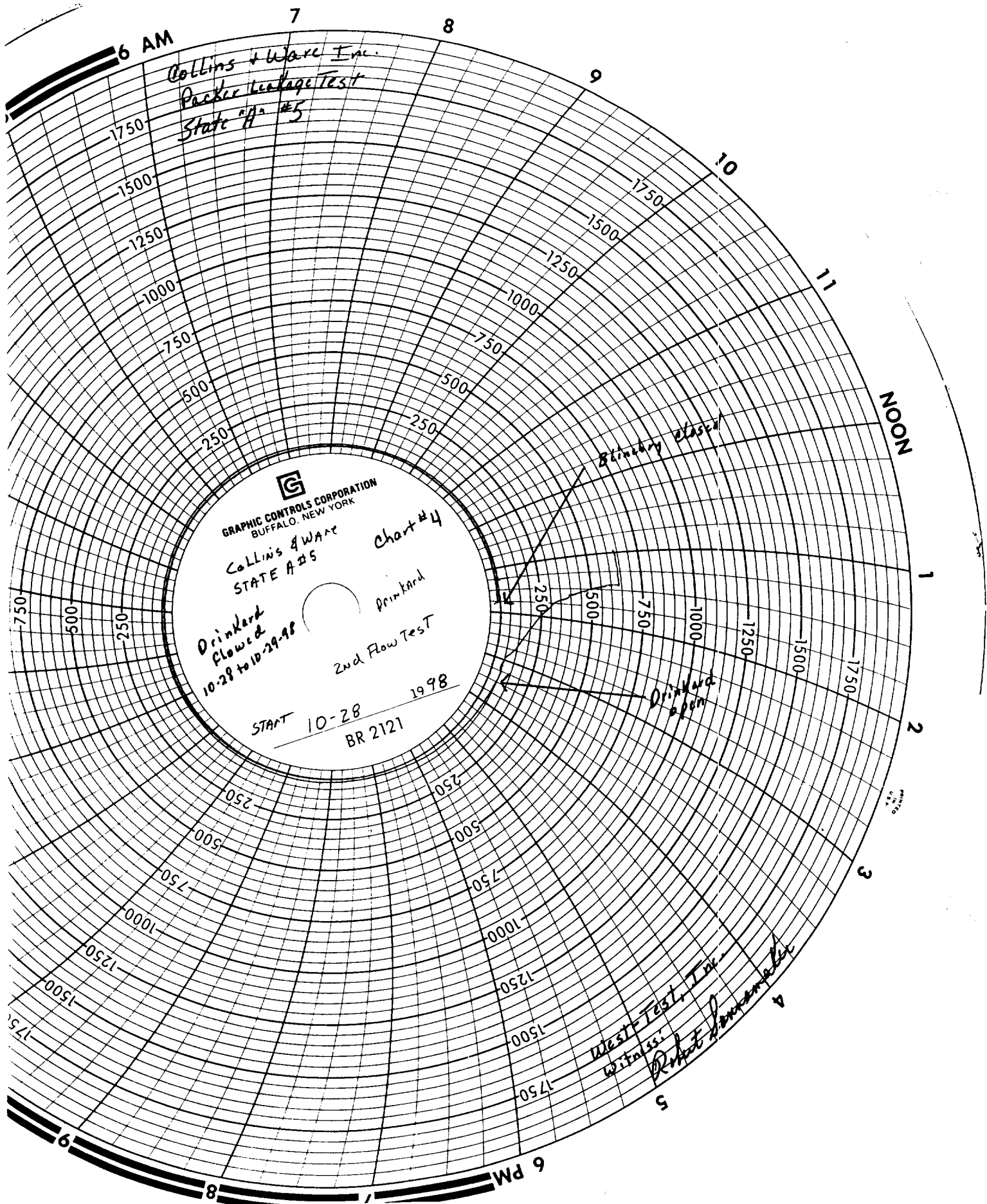
w/ Casing closed  
1:15 PM Start let test

10-26 19 98  
BR 2121

Blineby opened  
for test  
casing closed

West-Test, Inc.  
Witness:  
Robert J. J. J.







COUNTY LEA FIELD Hobbs STATE NM 30-025- 1116  
 OPR AMERADA HESS CORP. MAP  
 5 State "A"  
 Sec 32, T-18-S, R-38-E CO-ORD  
 660' FNL, 660' FEL of Sec.  
 Spd 4-24-69  
 CLASS  
 Cmp 7-1-69

CSG & SX - TUBING  
 11 3/4" at 381' w/730 sx  
 8 5/8" at 3798' w/390 sx  
 5 1/2" & 7" lnr 3701-6998' w/351 sx

LOGS EL GR RA IND HC A

FORMATION	DATUM	FORMATION	DATUM

TD 8044'; PBD 6954'

IP (Blinebry) Perfs 5905-57' S 212 BOPD + 860 BW. Pot based on  
 6 hr test, GOR TSTM, Grav 37.8, CP 125#, TP Pkr

IP (Drinkard) Perfs 6674-6936' F 36 BOPD + 8 BW. Pot based on  
 24 hr test thru 20/64" chk, GOR 27,750, Grav 37, CP Pkr, TP 540#

Distribution limited and publication prohibited by subscribers' agreement.  
 Reproduction rights reserved by Williams & Lee Scouting Service, Inc.

CONT. Leatherwood PROP DEPTH 6100' TYPE RT  
 DATE

F.R. 4-29-69; Opr's Elev. 3649' GL, 3660' DF  
 PD 6100' RT (Blinebry)  
 Contractor - Leatherwood  
 8-14-69 AMEND OPERATOR, Formerly reported as Amerada  
 Pet. Corp.  
 4-28-69 Drlg. 2895' anhy & lm  
 5-5-69 Drlg. 4231'  
 5-12-69 Drlg. 6016' lm  
 5-19-69 TD 6980'; Circ  
 DST 6860-6980', open 2 hrs 15 min, rec 279' OCDM  
 (8% oil), 40 min ISIP 2450#, FP 107-217#, 1 hr  
 FSIP 2740#, HP 3266-3248#  
 5-26-69 Drlg. 7872' lm  
 DST 7230-7355', open 4 hrs, rec 120' SOCM, 36  
 min ISIP 703#, FP 122-122#, 2 hr 15 min FSIP 1314#

5-26-69

Continued

DST (Wlfc) 7730-7872', open 4 hrs 3 min, rec  
690' mud, 540' sul wtr, rev out 4906' sul wtr,  
NS, 30 min ISIP 2919#, FP 1392-2823#, 2 hr 15  
min FSIP 2922#

6-2-69

TD 8044' granite; PBD 6954'; WO Cmp

6-9-69

TD 8044'; PBD 6954'; Tstg

Perf 6926-36' w/2 SPF

Acid (6926-36') 1500 gals

Flwd 11 BO + 6 BW in 5 hrs, 3/4" chk, CP 680#,  
TP 50# (6926-36')

Acid (6926-36') 3000 gals

Flwd 81 BO + 10 BW in 24 hrs, 3/4" chk, CP 610#,  
TP 100# (6926-36')

6-16-69

TD 8044'; PBD 6954'; Tstg

6-16-69

Continued

Perf 6674-98' w/2 SPF

Acid (6674-98') 2500 gals

Flwd 27 BO + 16 BFW in 6 hrs (6674-98')

Perf 6534-38', 6542-46', 6549-52', 6556-60',  
6564-68' w/2 SPF

Acid (6534-68') 100 gals

Flwd 41 BO + 62 BW in 23 hrs, 1/4" chk, TP 740#  
(6534-68')

Acid (6534-68') 2500 gals

Flwd 46 BO + 12 BW in 24 hrs, 1/4" chk, TP 340#  
(6534-68')

6-23-69

TD 8044'; PBD 6954'; SI

Sqzd 6534-68' w/75 sx

Perf (Blinebry) @ 5905', 5907', 5911', 5918',  
5922', 5926', 5930', 5935', 5954', 5957' w/2 SPL

6-23-69 Continued  
Acid (5905-57') 3000 gals  
Flwd 65 BO + 7 BW, various chks, in 3 hrs,  
TP 40-80#  
6-30-69 TD 8044'; PBD 6954'; SI (Drinkard)  
Blinbry Compted 6-25-69  
Flwd 22 BO + 76 BW in 5 hrs, 24/64" chk  
(6674-6936')  
7-7-69 TD 8044'; PBD 6954'; SI  
Flwd 13 BO + 4 BW in 11 hrs thru 20/64" chk,  
gas @ 999 MCFGPD, TP 535#  
7-29-69 TD 8044'; PBD 6954'; WO Pot  
8-5-69 TD 8044'; PBD 6954'; WO Pot  
8-11-69 TD 8044'; PBD 6954'; COMPLETE

8-11-69 Continued  
LOG TOPS: Anhydrite 1535', Base Salt 2354',  
Yates 2630', Seven Rivers 2727', Queen 3353',  
San Andres 3995', Glorieta 5348', Blinbry  
5735', Tubb 6418'  
8-14-69 COMPLETION REPORTED

# OIL CONSERVATION DIVISION

P.O. Box 2088

Santa Fe, New Mexico 87504-2088

Refer Order No. R-9696.

**DISTRICT I**

P.O. Box 1980, Hobbs, NM 88240

**DISTRICT II**

P.O. Drawer DD, Artesia, NM 88210

**DISTRICT III**

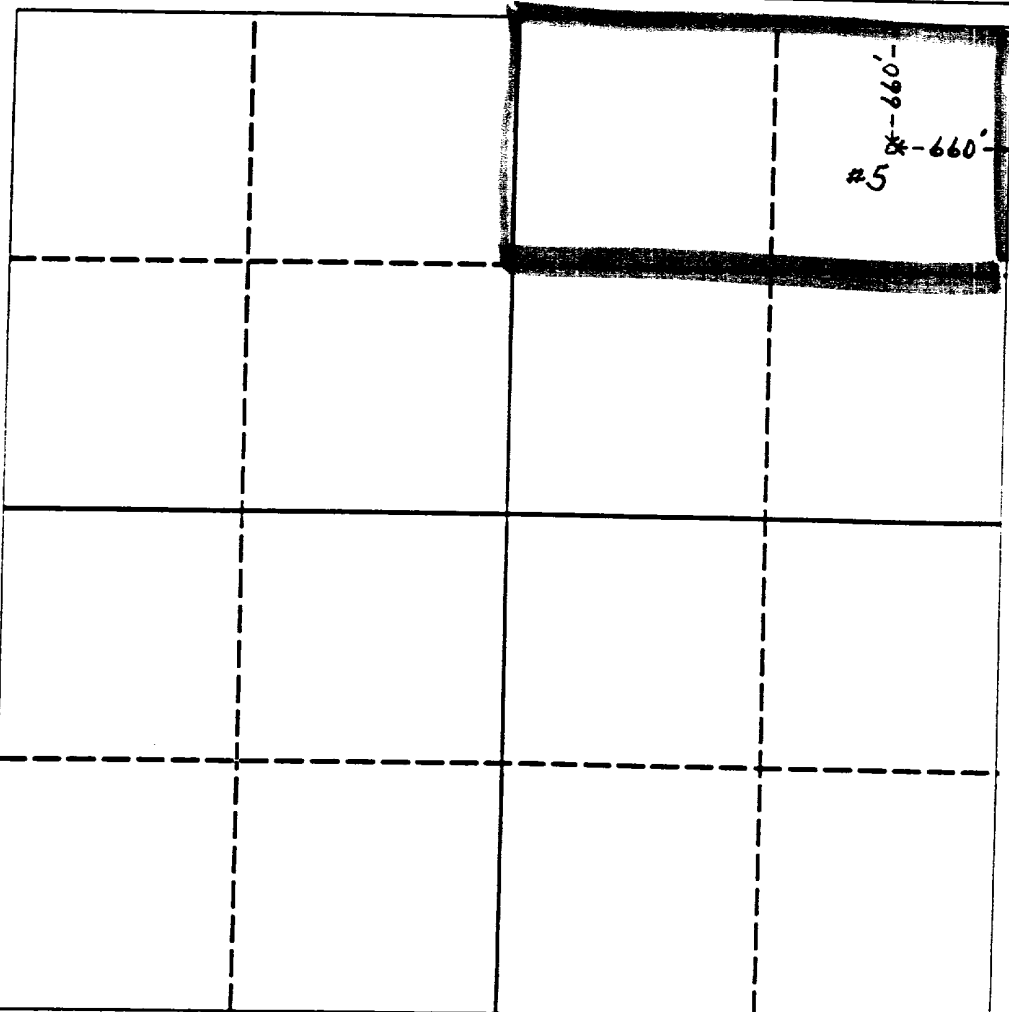
1000 Rio Brizcos Rd., Aztec, NM 87410

## WELL LOCATION AND ACREAGE DEDICATION PLAT

All Distances must be from the outer boundaries of the section

Operator Amerada Hess Corporation			Lease State "A"		Well No. 5
Unit Letter A	Section 32	Township 18S	Range 38E	County Lea	
Actual Footage Location of Well: 660 feet from the North line and 660 feet from the East line					
Ground level Elev. 3648'	Producing Formation Blinebry		Pool Hobbs-Lower	Dedicated Acreage: 80 Acres	

1. Outline the acreage dedicated to the subject well by colored pencil or hatchure marks on the plat below.
2. If more than one lease is dedicated to the well, outline each and identify the ownership thereof (both as to working interest and royalty).
3. If more than one lease of different ownership is dedicated to the well, have the interest of all owners been consolidated by communitization, unitization, force-pooling, etc.?  
☐ Yes ☐ No If answer is "yes" type of consolidation \_\_\_\_\_  
If answer is "no" list the owners and tract descriptions which have actually been consolidated. (Use reverse side of this form if necessary.) \_\_\_\_\_  
No allowable will be assigned to the well until all interests have been consolidated (by communitization, unitization, forced-pooling, or otherwise) or until a non-standard unit, eliminating such interest, has been approved by the Division.



### OPERATOR CERTIFICATION

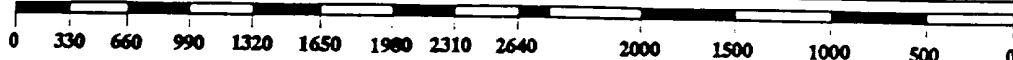
I hereby certify that the information contained herein is true and complete to the best of my knowledge and belief.

Signature  
*R. L. Wheeler, Jr.*  
Printed Name  
R. L. Wheeler, Jr.  
Position  
Supv. Adm. Svc.  
Company  
Amerada Hess Corporation  
Date  
7-31-92

### SURVEYOR CERTIFICATION

I hereby certify that the well location shown on this plat was plotted from field notes of actual surveys made by me or under my supervision, and that the same is true and correct to the best of my knowledge and belief.

Date Surveyed  
Signature & Seal of Professional Surveyor  
Certificate No.



**RECEIVED**

**AUG 03 1992**

**OCD HOBBS OFF**

**NEW MEXICO OIL CONSERVATION COMMISSION  
WELL LOCATION AND ACREAGE DEDICATION PLAT**

Form C-128  
Supersedes C-128  
Effective 1-1-69

All distances must be from the outer boundaries of the Section.

Operator <b>AMERADA PETROLEUM CORP.</b>				Lease <b>STATE <u>AUG 18</u> 1 10 AM '69</b>		Well No. <b>5</b>
Unit Letter <b>A</b>	Section <b>32</b>	Township <b>18 South</b>	Range <b>38 East</b>	County <b>Lea</b>		

Actual Footage Location of Well:

660 feet from the <b>North</b> line and		660 feet from the <b>East</b> line	
Ground Level Elev. <b>3449</b>	Producing Formation <b>Drinkard</b>	Pool <b>Hobbs Drinkard</b>	Dedicated Acreage <b>80 acres</b>

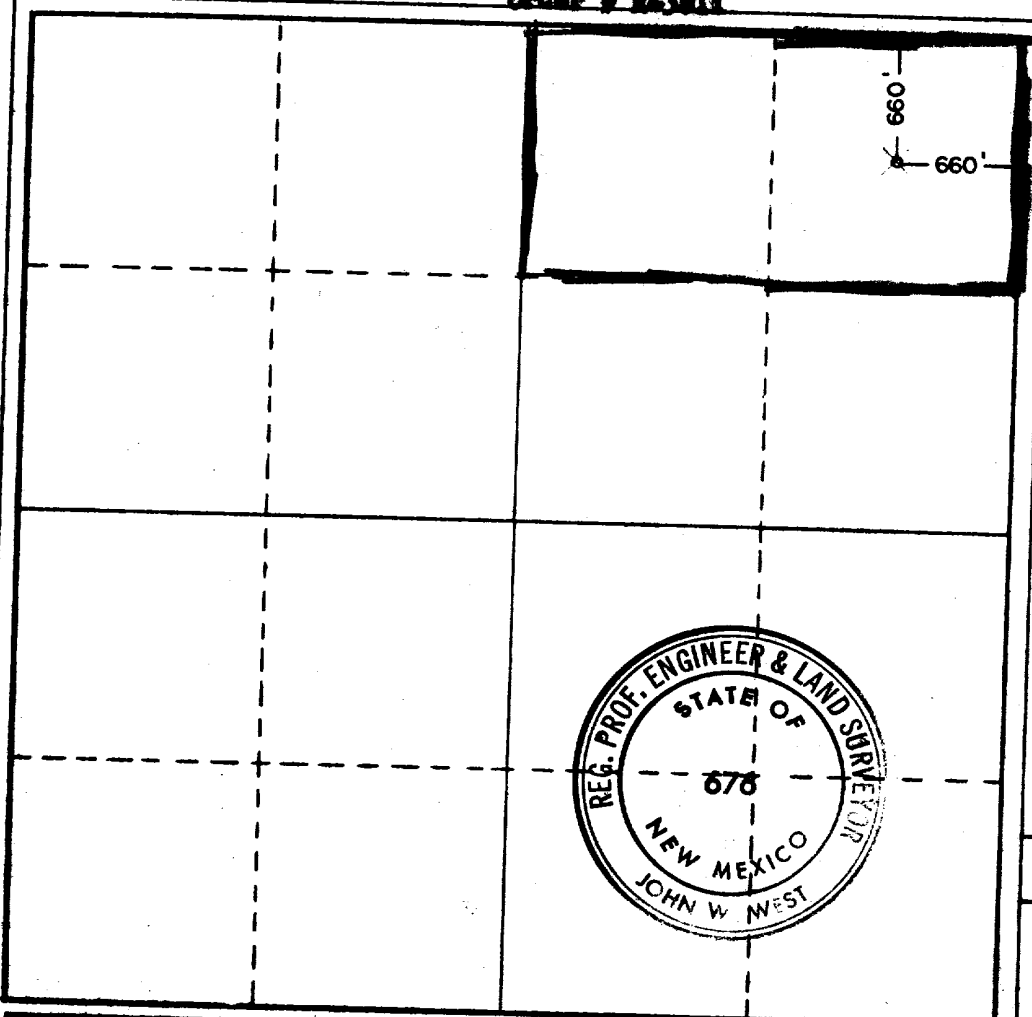
1. Outline the acreage dedicated to the subject well by colored pencil or hatchure marks on the plat below.
2. If more than one lease is dedicated to the well, outline each and identify the ownership thereof (both as to working interest and royalty).
3. If more than one lease of different ownership is dedicated to the well, have the interests of all owners been consolidated by communitization, unitization, force-pooling, etc?

☐ Yes ☐ No If answer is "yes," type of consolidation \_\_\_\_\_

If answer is "no," list the owners and tract descriptions which have actually been consolidated. (Use reverse side of this form if necessary.) \_\_\_\_\_

No allowable will be assigned to the well until all interests have been consolidated (by communitization, unitization, forced-pooling, or otherwise) or until a non-standard unit, eliminating such interests, has been approved by the Commission.

**Order # E-3011**



**CERTIFICATION**

I hereby certify that the information contained herein is true and complete to the best of my knowledge and belief.

Name *[Signature]*  
 Position *[Signature]*  
 Dist. Supt.  
 Company **Amerada Hess Corporation**  
 Date **MAY 18, 1969**

I hereby certify that the well location shown on this plat was plotted from field notes of actual surveys made by me or under my supervision, and that the same is true and correct to the best of my knowledge and belief.

Date Surveyed **April 18, 1969**  
 Registered Professional Engineer and/or Land Surveyor  
*John W. West*  
 Certificate No. **676**

