

DISTRICT I

P.O. Box 1980, Hobbs, NM 88241-1980

DISTRICT II

P.O. Box Drawer DD, Artesia, NM 88211-0719

DISTRICT III

1000 Rio Brazos Rd., Aztec, NM 87410

DISTRICT IV

P.O. Box 2088, Santa Fe, NM 87504-2088

State of New Mexico

Energy, Minerals and Natural Resources Department

OIL CONSERVATION DIVISION

P.O. Box 2088

Santa Fe, New Mexico 87504-2088

Form C-101

Revised February 10, 1994

Instructions on back
Submit to Appropriate District Office

State Lease - 6 Copies

Fee Lease - 5 Copies

☐ AMENDED REPORT

APPLICATION FOR PERMIT TO DRILL, RE-ENTER, DEEPEN, PLUGBACK, OR ADD A ZONE

¹ Operator Name and Address TEXACO EXPLORATION & PRODUCTION INC. 205 E. Bender, HOBBS, NM 88240		² OGRID Number 022351
		³ API Number 3002523151
⁴ Property Code 010992	⁵ Property Name MCKINLEY, H. D.	⁶ Well No. 8

⁷ Surface Location

UI or lot no.	Section	Township	Range	Lot.Idn	Feet From The	North/South Line	Feet From The	East/West Line	County
H	30	18S	38E		2310	NORTH	430	EAST	LEA

⁸ Proposed Bottom Hole Location If Different From Surface

UI or lot no.	Section	Township	Range	Lot.Idn	Feet From The	North/South Line	Feet From The	East/West Line	County
⁹ Proposed Pool 1 BYERS QUEEN					¹⁰ Proposed Pool 2				

¹¹ Work Type Code P	¹² WellType Code G	¹³ Rotary or C.T. R	¹⁴ Lease Type Code P	¹⁵ Ground Level Elevation 3643.5'
¹⁶ Multiple No	¹⁷ Proposed Depth 6027'	¹⁸ Formation BYERS QUEEN	¹⁹ Contractor DAWSON	²⁰ Spud Date 3/23/98

²¹ Proposed Casing and Cement Program

SIZE OF HOLE	SIZE OF CASING	WEIGHT PER FOOT	SETTING DEPTH	SACKS CF CEMENT	EST. TOP
11"	8 5/8"	32#	3842'	1400 SX, CIRC	
7 7/8"	5 1/2"	15.5#, 17#	6057'	650 SX	TOC @ 2000'

²² Describe the proposed program. If this application is to DEEPEN or PLUG BACK give the data on the present productive zone and proposed new productive zone.
Describe the blowout prevention program, if any. Use additional sheets if necessary.

1. MIRU PULLING UNIT. NU BOP.
2. MIRU WIRELINE. TIH W/CIBP SET @ 5650'. TIH W/DUMP BAILER & PLACE 35' CAP ON CIBP. TEST PLUG TO 500# SURF PRESS.
3. TIH W/4" CSG GUN W/4 JSPF & 90 DEG PHASING. PERF BYERS QUEEN FR: 3676-3682, 3697-3706, 3720-3728, 3746-3754'
4. TIH W/PKR ON TBG SET @ 3600'. TEST TO 500# WSURF PRESS.
5. ACIDIZE PERFS W/2500 GALS 15% HCL.
6. SWAB WELL TO REC V LOAD.
7. REL PKR & RUN TO BTM PERF TO KNOCK OFF ANY REMAINING BALLSEALERS.
8. TIH W/PKR ON TBG SET @ 3560'. TEST TO 1000# SURF PRESS.
9. FRAC W. 47,500 GALS 50Q CO2.
10. TIH W/SNKR BAR THRU TBG. REL PKR. TIH W/BIT & CSG SCRAPER. TIH W/PROD PKR ON TBG. SET ABOVE QUEEN PERFS. SWAB.

Plug back

²³ I hereby certify that the rules and regulations of the Oil Conservation Division have been complied with and that the information given above is true and complete to the best of my knowledge and belief.

Signature *J. Denise Leake*

Printed Name J. Denise Leake

Title Engineering Assistant

Date 3/11/98

Telephone 397-0405

OIL CONSERVATION DIVISION

Approved By: *[Signature]*

Title:

Approval Date:

Expiration Date:

Conditions of Approval:
Attached ☐

DISTRICT I

P.O. Box 1980, Hobbs, NM 88241-1980

DISTRICT II

P.O. Box Drawer DD, Artesia, NM 88211-0719

DISTRICT III

1000 Rio Brazos Rd., Aztec, NM 87410

DISTRICT IV

P.O. Box 2088, Santa Fe, NM 87504-2088

State of New Mexico

Energy, Minerals and Natural Resources Department

OIL CONSERVATION DIVISION

P.O. Box 2088

Santa Fe, New Mexico 87504-2088

Form C-102

Revised February 10, 1994

Instructions on back

Submit to Appropriate District Office

State Lease - 4 Copies

Fee Lease - 3 Copies

☐ AMENDED REPORT

WELL LOCATION AND ACREAGE DEDICATION PLAT

¹ API Number 3002523151	² Pool Code 31680 73610	³ Pool Name BYERS QUEEN
⁴ Property Code 010992	⁵ Property Name MCKINLEY, H. D.	⁶ Well No. 8
⁷ OGRID Number 022351	⁸ Operator Name TEXACO EXPLORATION & PRODUCTION INC.	⁹ Elevation 3648.5'

¹⁰ Surface Location

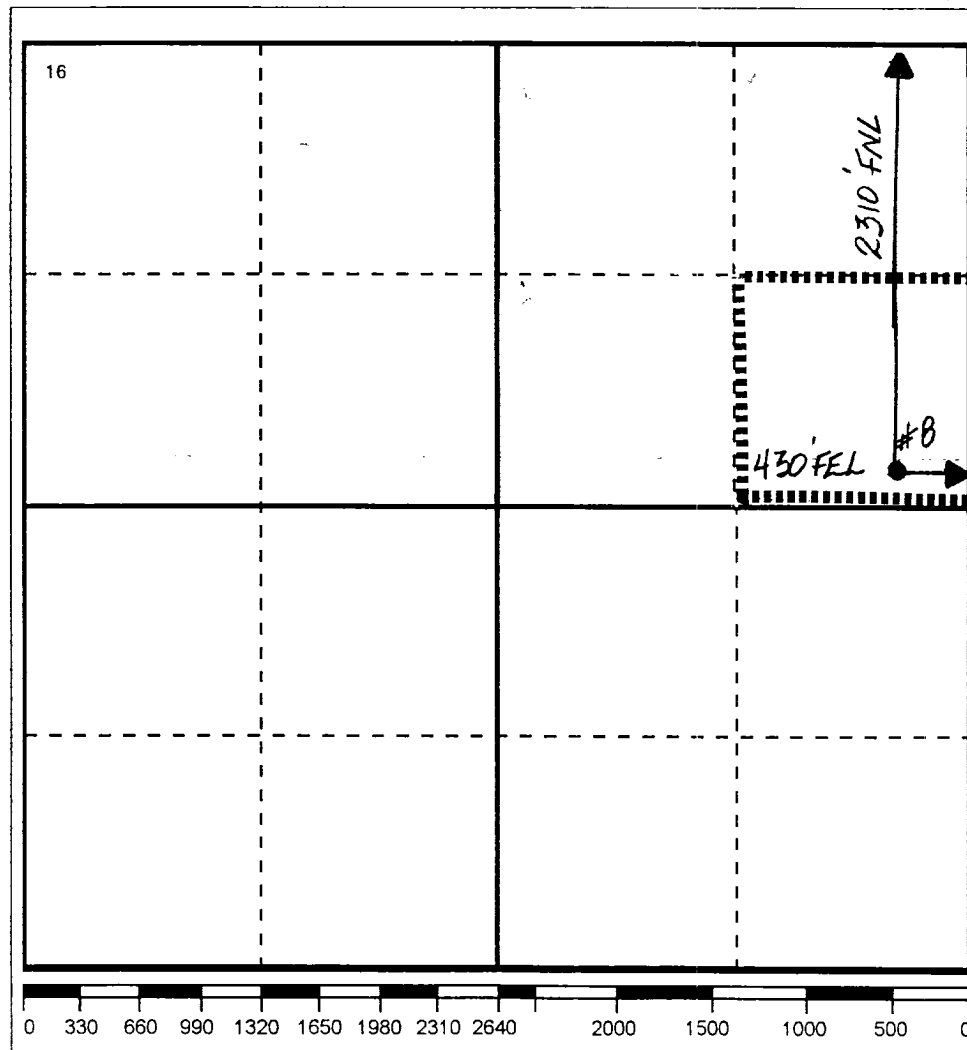
UI or lot no.	Section	Township	Range	Lot.Idn	Feet From The	North/South Line	Feet From The	East/West Line	County
H	30	18S	38E		2310	NORTH	430	EAST	LEA

¹¹ Bottom Hole Location If Different From Surface

UI or lot no.	Section	Township	Range	Lot.Idn	Feet From The	North/South Line	Feet From The	East/West Line	County

¹² Dedicated Acres 160	¹³ Joint or Infill No	¹⁴ Consolidation Code	¹⁵ Order No.
--------------------------------------	-------------------------------------	----------------------------------	-------------------------

NO ALLOWABLE WILL BE ASSIGNED TO THIS COMPLETION UNTIL ALL INTERESTS HAVE BEEN CONSOLIDATED
OR A NON-STANDARD UNIT HAS BEEN APPROVED BY THE DIVISION



17 OPERATOR CERTIFICATION

I hereby certify that the information contained herein is true and complete to the best of my knowledge and belief

Signature

Printed Name

J. Denise Leake

Position

Engineering Assistant

Date

3/11/98

18 SURVEYOR CERTIFICATION

I hereby certify that the well location shown on this plat was plotted from field notes of actual surveys made by me or under my supervision, and that the same is true and correct to the best of my knowledge and belief.

Date Surveyed

Signature & Seal of

Professional Surveyor

Certificate No.