

NEW MEXICO OIL CONSERVATION COMMISSION
WELL LOCATION AND ACREAGE DEDICATION PLAT

HOBBS OFFICE O. C. C.

DEC 31 1969
Form C-102
Supersedes C-128
Effective 1-1-65

All distances must be from the outer boundaries of the Section.

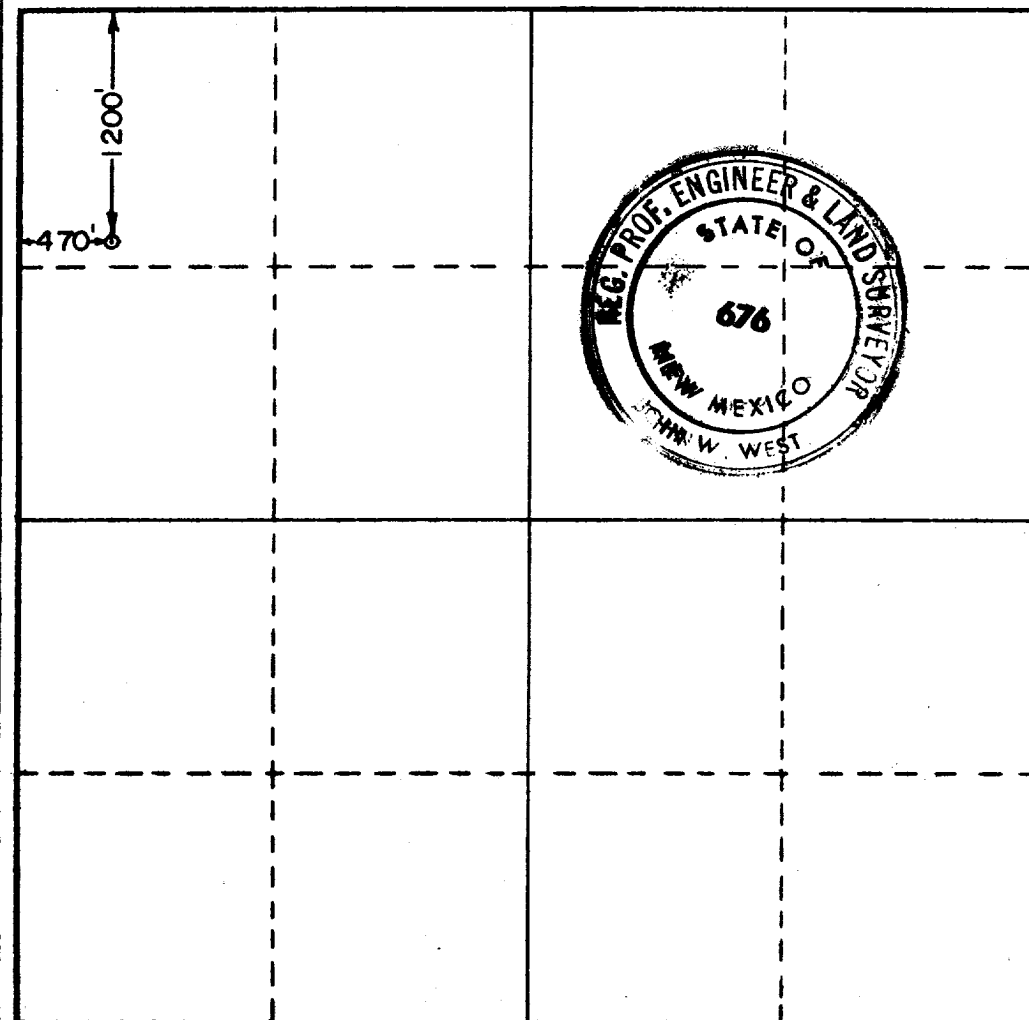
Operator SHELL OIL COMPANY		Lease 11,770		Well No. 6	
Unit Letter D	Section 27	Township 18 SOUTH	Range 38 EAST	County LEA	
Actual Footage Location of Well: 1200 feet from the NORTH line and 470 feet from the WEST line					
Ground Level Elev. Not Available	Producing Formation Grayburg-San Andres		Pool Hobbs Grayburg-San Andres	Dedicated Acreage: 40 Acres	

1. Outline the acreage dedicated to the subject well by colored pencil or hachure marks on the plat below.
2. If more than one lease is dedicated to the well, outline each and identify the ownership thereof (both as to working interest and royalty).
3. If more than one lease of different ownership is dedicated to the well, have the interests of all owners been consolidated by communitization, unitization, force-pooling, etc?

☐ Yes ☐ No If answer is "yes," type of consolidation _____

If answer is "no," list the owners and tract descriptions which have actually been consolidated. (Use reverse side of this form if necessary.) _____

No allowable will be assigned to the well until all interests have been consolidated (by communitization, unitization, forced-pooling, or otherwise) or until a non-standard unit, eliminating such interests, has been approved by the Commission.



CERTIFICATION

I hereby certify that the information contained herein is true and complete to the best of my knowledge and belief.

J.D. Duren
Name **J.D. Duren**

Position **Staff Operations Engineer**

Company

Shell Oil Company

Date

December 17, 1969

I hereby certify that the well location shown on this plat was plotted from field notes of actual surveys made by me or under my supervision, and that the same is true and correct to the best of my knowledge and belief.

Date Surveyed

DECEMBER 11, 1969

Registered Professional Engineer and/or Land Surveyor

John W. West

Certificate No.

676

0 300 600 900 1200 1500 1800 2100 2400 2700 3000 3300 3600 3900 4200 4500 4800 5100 5400 5700 6000