

**NEW MEXICO OIL CONSERVATION COMMISSION
WELL LOCATION AND ACREAGE DEDICATION PLAT**

Form C-102
Supersedes C-128
Effective 1-1-65

All distances must be from the outer boundaries of the Section.

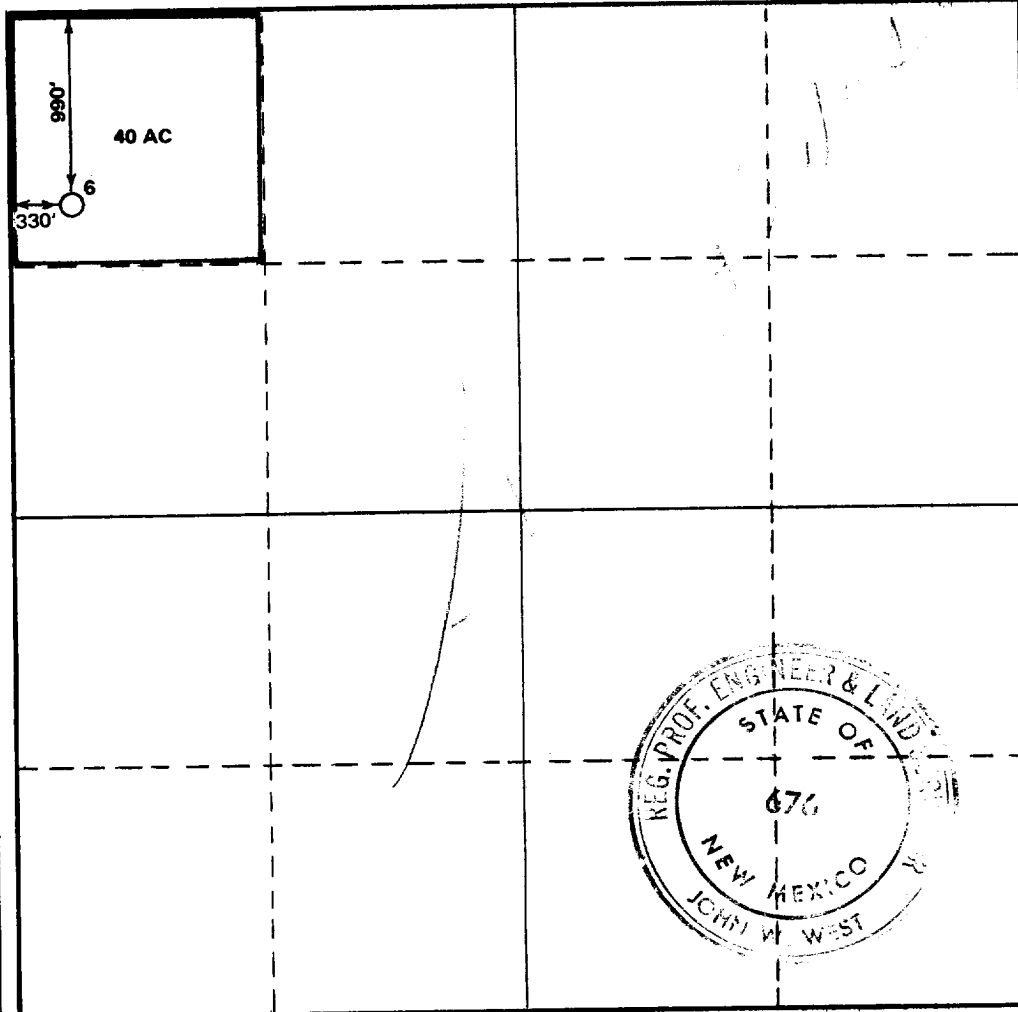
Operator Shell Oil Company			Lease Sanger		Well No. 6
Unit Letter D	Section 27	Township 18-S	Range 38-E	County Lea	
Actual Footage Location of Well: 990 feet from the north line and 330 feet from the west line					
Ground Level Elev: Not Available	Producing Formation Grayburg San Andres		Pool Hobbs Grayburg San Andres		Dedicated Acreage: 40 Acres

1. Outline the acreage dedicated to the subject well by colored pencil or hachure marks on the plat below.
2. If more than one lease is dedicated to the well, outline each and identify the ownership thereof (both as to working interest and royalty).
3. If more than one lease of different ownership is dedicated to the well, have the interests of all owners been consolidated by communitization, unitization, force-pooling, etc?

☐ Yes ☐ No If answer is "yes," type of consolidation _____

If answer is "no," list the owners and tract descriptions which have actually been consolidated. (Use reverse side of this form if necessary.) _____

No allowable will be assigned to the well until all interests have been consolidated (by communitization, unitization, forced-pooling, or otherwise) or until a non-standard unit, eliminating such interests, has been approved by the Commission.



CERTIFICATION

I hereby certify that the information contained herein is true and complete to the best of my knowledge and belief.

J. D. Duren
Name **J. D. Duren**

Staff Operations Engineer

Position

Shell Oil Company

Company

November 21, 1969

Date

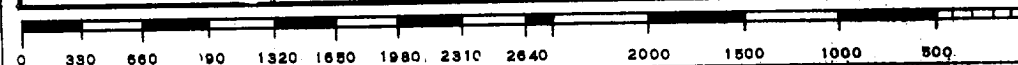
I hereby certify that the well location shown on this plat was plotted from field notes of actual surveys made by me or under my supervision, and that the same is true and correct to the best of my knowledge and belief.

Date Surveyed

11-5-1969

Registered Professional Engineer
and/or Land Surveyor

John W. West
Certificate No. **676**



RECEIVED 10/11/1918

RECEIVED 10/11/1918

RECEIVED 10/11/1918

RECEIVED 10/11/1918

RECEIVED 10/11/1918

RECEIVED 10/11/1918

RECEIVED 10/11/1918

RECEIVED 10/11/1918

RECEIVED 10/11/1918

RECEIVED 10/11/1918

RECEIVED 10/11/1918

RECEIVED 10/11/1918

RECEIVED 10/11/1918

RECEIVED 10/11/1918

11/11/18

Longmont, Colo.
10/15/18