

NEW MEXICO OIL CONSERVATION COMMISSION
WELL LOCATION AND ACREAGE DEDICATION PLAT

Form No. 1
Superintendent of Mines
Effective 1-1-61

All distances must be from the outer boundaries of the section.

MOBILE OFFICE

Mobil Oil Corporation		Dec 17 - 1 22 AM '69		Well No. 133	
Section	Range	County	State	County	State
F	14	17-S	34-E	Lea	
Acres					
1830	2150				
4025	Morrow	North Vacuum Morrow	320		

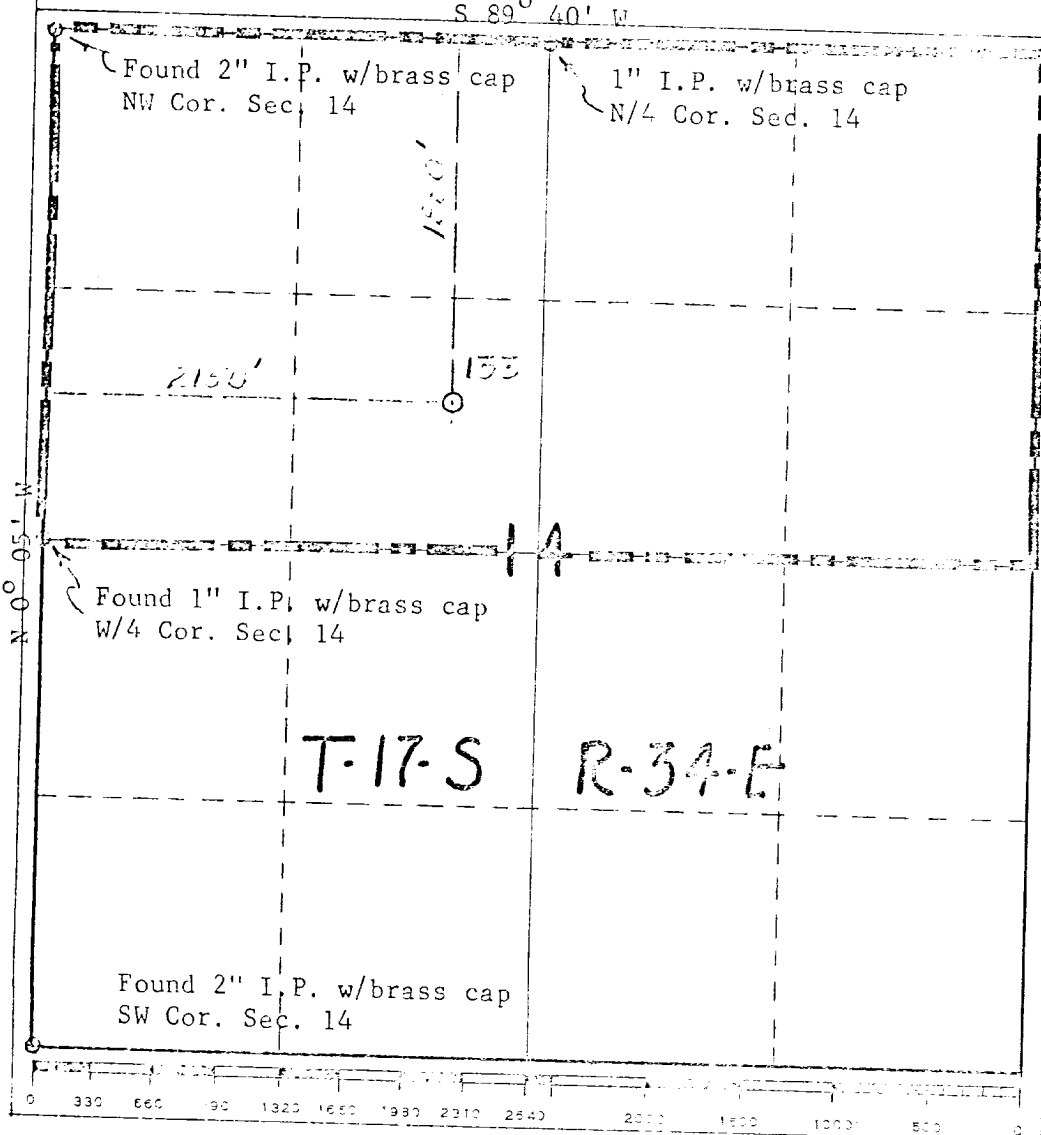
1. Outline the acreage dedicated to the subject well by colored pencil or hatchure marks on the plat below.
2. If more than one lease is dedicated to the well, outline each and identify the ownership thereof (both as to working interest and royalty).
3. If more than one lease of different ownership is dedicated to the well, have the interests of all owners been consolidated by communitization, unitization, force-pooling, etc?

☐ Yes ☐ No If answer is "yes?" type of consolidation _____

If answer is "no," list the owners and tract descriptions which have actually been consolidated. (Use reverse side of this form if necessary.) _____

No allowable will be assigned to the well until all interests have been consolidated (by communitization, unitization, forced-pooling, or otherwise) or until a non-standard unit, eliminating such interests, has been approved by the Commission.

S 89° 40' W



CERTIFICATION

I hereby certify that the information contained herein is true and complete to the best of my knowledge and belief.

Name A. D. Bond

Position Proration Staff Assistant

Company Mobil Oil Corporation

Date December 15, 1969

I hereby certify that the well location shown on this plat was plotted from field notes of actual surveys made by me or under my supervision, and that the same is true and correct to the best of my knowledge and belief.

Signature John H. Seerey
December 12, 1969

Registered Professional Engineer and/or Land Surveyor

John H. Seerey

Certificate No.

3572