

NEW M CO OIL CONSERVATION COMMISSION
WELL LOCATION AND ACREAGE DEDICATION PLAT

Form C-122
Supersedes C-128
Effective 1-1-65

All distances must be from the outer boundaries of the Section.

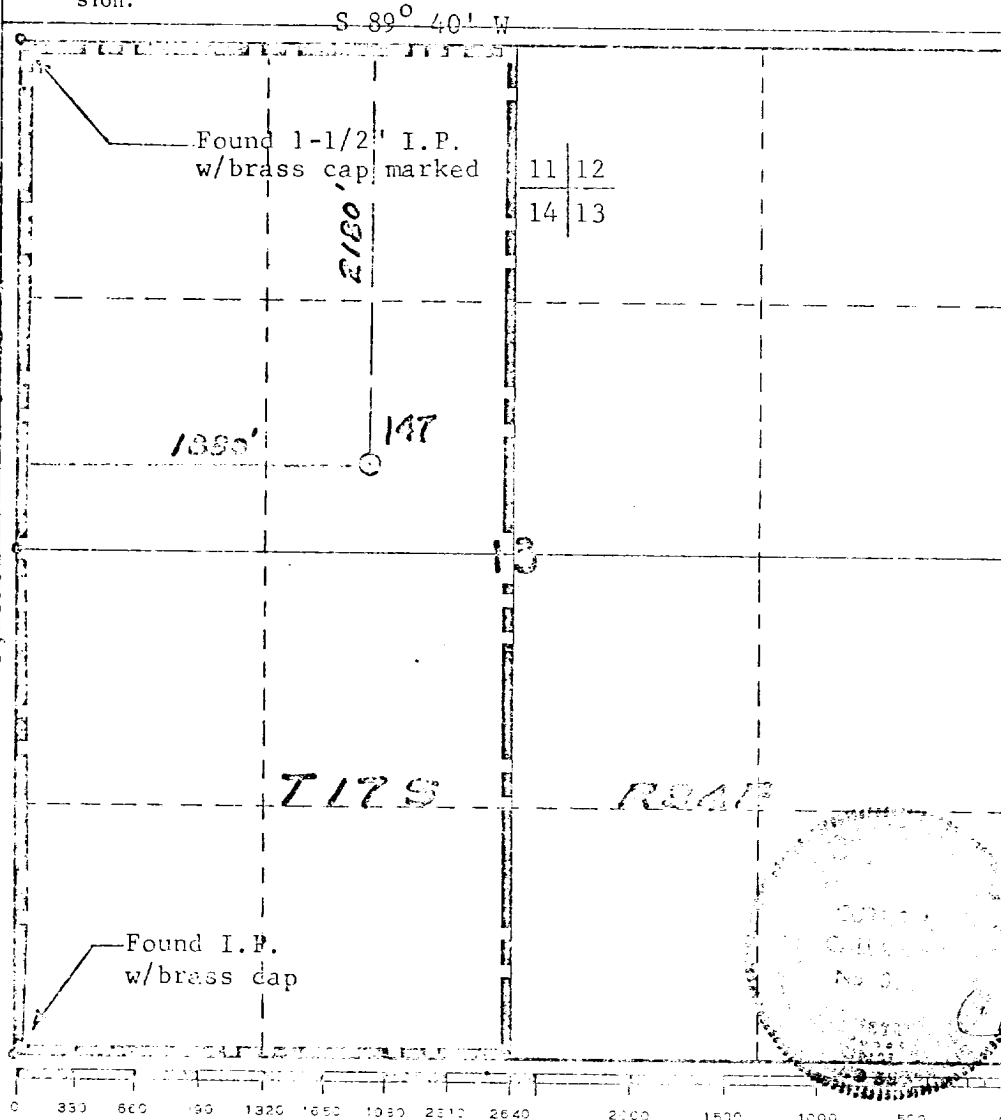
Operator Mobil Oil Corporation			Lease Bridges State		Well No. 147
Unit Letter F	Section 13	Township 17-S	Range 34-E	County Iowa	
Actual Section Location of Well:					
1880 feet from the West line and		2180 feet from the North line			
Ground Level Elev. 4017	Producing Formation Morrow	Pool Undesignated	Dedicated Acreage: 320 Acres		

1. Outline the acreage dedicated to the subject well by colored pencil or hatchure marks on the plat below.
2. If more than one lease is dedicated to the well, outline each and identify the ownership thereof (both as to working interest and royalty).
3. If more than one lease of different ownership is dedicated to the well, have the interests of all owners been consolidated by communitization, unitization, force-pooling, etc?

☐ Yes ☐ No If answer is "yes," type of consolidation _____

If answer is "no," list the owners and tract descriptions which have actually been consolidated. (Use reverse side of this form if necessary.) _____

No allowable will be assigned to the well until all interests have been consolidated (by communitization, unitization, forced-pooling, or otherwise) or until a non-standard unit, eliminating such interests, has been approved by the Commission.



CERTIFICATION

I hereby certify that the information contained herein is true and complete to the best of my knowledge and belief.

W. B. Simmons, Jr.
Name
W. B. Simmons, Jr.

Position
Associate Engineer

Company
Mobil Oil Corporation

Date
July 14, 1970

I hereby certify that the well location shown on this plat was plotted from field notes of actual surveys made by me or under my supervision, and that the same is true and correct to the best of my knowledge and belief.

Date Surveyed
July 14, 1970

Registered Professional Engineer and/or Land Surveyor

Curtis A. Callaway
Curtis A. Callaway

Certificate No.
3342