

NO. OF COPIES RECEIVED	
DISTRIBUTION	
SANTA FE	
FILE	
U.S.G.S.	
LAND OFFICE	
OPERATOR	

NEW MEXICO OIL CONSERVATION COMMISSION

Form C-101
Revised 1-1-65

5A. Indicate Type of Lease STATE <input checked="" type="checkbox"/> FEE <input type="checkbox"/>
5. State Oil & Gas Lease No. B-1520
7. Unit Agreement Name
8. Farm or Lease Name Bridges State
9. Well No. 142
10. Field and Pool, or Wildcat Vacuum, North
12. County Lea
11. Proposed Depth 8750
13A. Formation Abo
13B. Rotary or C.T. Rotary
21. Elevation (Show whether DT, RT, etc.) 4025.2
21A. Kind & Status Plug. Bond On File
21B. Drilling Contractor Marcum
22. Approx. Date Work will start Aug. 27, 1970

APPLICATION FOR PERMIT TO DRILL, DEEPEN, OR PLUG BACK

1a. Type of Work	1b. Type of Well DRILL <input checked="" type="checkbox"/> DEEPEN <input type="checkbox"/> PLUG BACK <input type="checkbox"/> OIL WELL <input checked="" type="checkbox"/> GAS WELL <input type="checkbox"/> OTHER <input type="checkbox"/> SINGLE ZONE <input checked="" type="checkbox"/> MULTIPLE ZONE <input type="checkbox"/>
2. Name of Operator Mobil Oil Corporation	
3. Address of Operator P. O. Box 633, Midland, Texas 79701	
4. Location of Well UNIT LETTER J LOCATED 1807 FEET FROM THE South LINE AND 1880 FEET FROM THE East LINE OF SEC. 14 TWP. 17 S RGE. 34 E NMPM	
21. Elevation (Show whether DT, RT, etc.) 4025.2	21A. Kind & Status Plug. Bond On File
21B. Drilling Contractor Marcum	22. Approx. Date Work will start Aug. 27, 1970

PROPOSED CASING AND CEMENT PROGRAM

SIZE OF HOLE	SIZE OF CASING	WEIGHT PER FOOT	SETTING DEPTH	SACKS OF CEMENT	EST. TOP
12-1/4	8-5/8	20#	1200		
12-1/4	8-5/8	24#	1650	Circulate	Surface
7-7/8	5-1/2	15.5#	1043		
7-7/8	5-1/2	14.0#	5374		
7-7/8	5-1/2	15.5#	7049		
7-7/8	5-1/2	17.0#	8651	Circulate	Above San Andres zone est. @ 4640'
7-7/8	5-1/2	17.0#	8700		

Mud Program

0 - 1650 Spud Mud
1650 - 8000 Brackish Water
8000 - 8700 Brackish Water, Flosal and Oil as needed to clean hole and obtain samples

Logging Program

2800 - 8200 - Laterolog
2800 - 8700 - Sidewall Neutron - GR Col.

THIS PROGRAM IS BEING NOTIFIED

2800 - 8700 - GR Col. 8 1/2'

APPROVED BY

DATE

11-4-70

IN ABOVE SPACE DESCRIBE PROPOSED PROGRAM: IF PROPOSAL IS TO DEEPEN OR PLUG BACK, GIVE DATA ON PRESENT PRODUCTIVE ZONE AND PROPOSED NEW PRODUCTIVE ZONE. GIVE BLOWOUT PREVENTER PROGRAM, IF ANY.

I hereby certify that the information above is true and complete to the best of my knowledge and belief.

Signed A. D. Bond Title Proration Staff Assistant Date August 4, 1970

(This space for State Use)

APPROVED BY Leslie A. Bennett TITLE DATE 11/7

CONDITIONS OF APPROVAL, IF ANY:

W M IICO OIL CONSERVATION COMM. N
WELL LOCATION AND ACREAGE DEDICATION PLAT

Form C-102
Supersedes C-128
Effective 1-1-65

All distances must be from the outer boundaries of the Section.

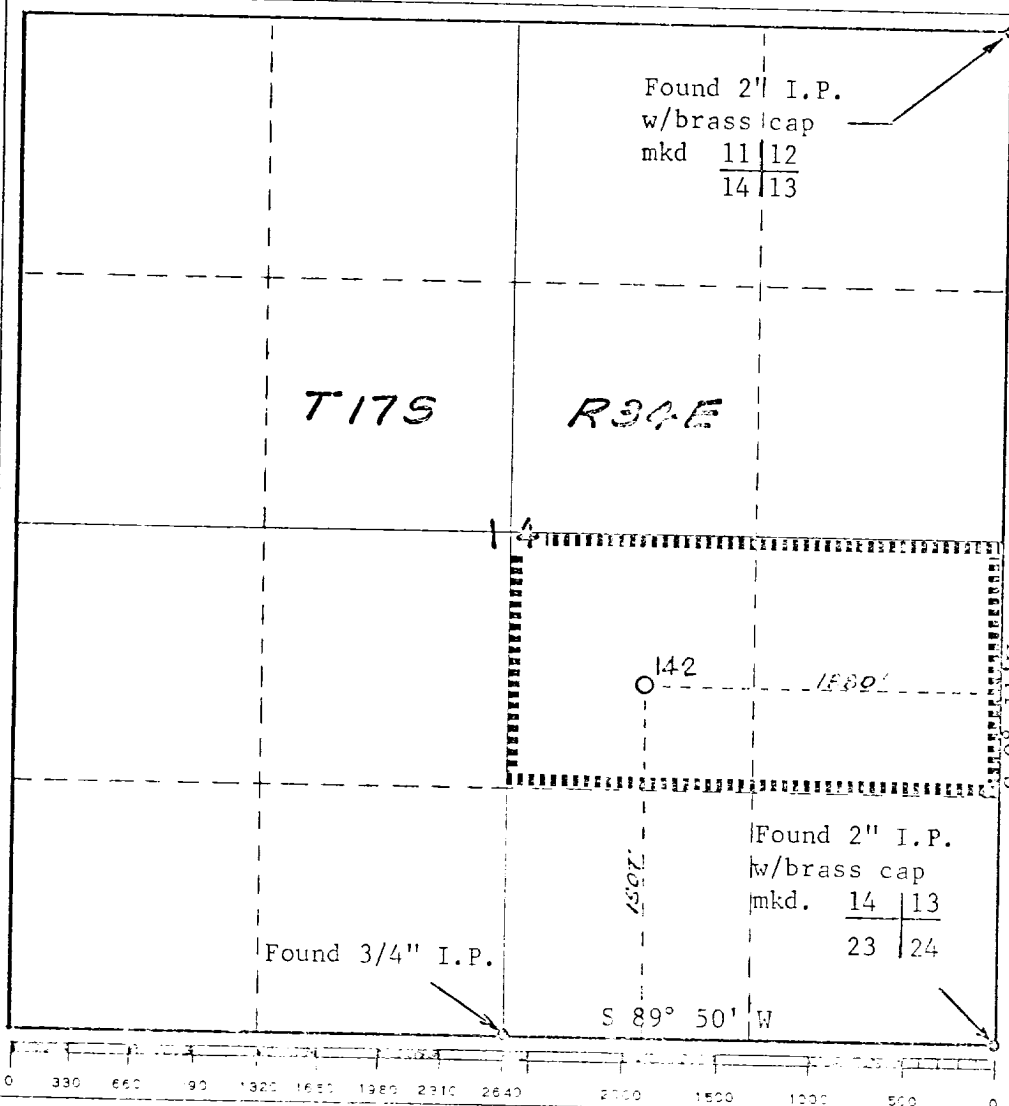
Operator Mobil Oil Corporation			Lease Bridges State		Well No. 142
Unit Letter J	Section 14	Township 17 S	Range 34 E	County Lea	
Actual Footage Location of Well: 1807 feet from the South line and 1880 feet from the East line					
Ground Level Elev. 4025.2	Producing Formation Abo	Pool Vacuum, North	Dedicated Acreage: 80 Acres		

1. Outline the acreage dedicated to the subject well by colored pencil or hachure marks on the plat below.
2. If more than one lease is dedicated to the well, outline each and identify the ownership thereof (both as to working interest and royalty).
3. If more than one lease of different ownership is dedicated to the well, have the interests of all owners been consolidated by communitization, unitization, force-pooling, etc?

☐ Yes ☐ No If answer is "yes," type of consolidation _____

If answer is "no," list the owners and tract descriptions which have actually been consolidated. (Use reverse side of this form if necessary.) _____

No allowable will be assigned to the well until all interests have been consolidated (by communitization, unitization, forced-pooling, or otherwise) or until a non-standard unit, eliminating such interests, has been approved by the Commission.



CERTIFICATION

I hereby certify that the information contained herein is true and complete to the best of my knowledge and belief.

A. D. Bond

Name

A. D. Bond

Position

Proration Staff Assistant

Company

Mobil Oil Corporation

Date

August 4, 1970

I hereby certify that the well location shown on this plat was plotted from field notes of actual surveys made by me or under my supervision, and that the same is true and correct to the best of my knowledge and belief.

Date

June 19, 1970

Registered Professional Engineer and/or Land Surveyor

John H. Seerey

Certificate No.

3572

88-12-21 12-21-88

RECEIVED
12-21-88
FBI