

NO. OF COPIES RECEIVED	
DISTRIBUTION	
SANTA FE	
FILE	
U.S.G.S.	
LAND OFFICE	
OPERATOR	

NEW MEXICO OIL CONSERVATION COMMISSION

Form C-101
Revised 1-1-65

5A. Indicate Type of Lease	
STATE <input checked="" type="checkbox"/>	FEE <input type="checkbox"/>
5. State Oil & Gas Lease No.	
B-1520	
7. Unit Agreement Name	
8. Farm or Lease Name	
Bridges State	
9. Well No.	
150	
10. Field and Pool, or Wildcat	
Vacuum, Abo North	
12. County	
Lea	
Proposed Depth	13A. Formation
8700	Abo
20. Rotary or C.T.	
Rotary	
21. Elevations (Show whether DF, RI, etc.)	21A. Kind & Status Plug. Bond
4022 GL	On File
21B. Drilling Contractor	22. Approx. Date Work will start
Marcum Drilling Co.	Dec. 20, 1970

APPLICATION FOR PERMIT TO DRILL, DEEPEN, OR PLUG BACK

1a. Type of Work

b. Type of Well DRILL ☒ DEEPEN ☐ PLUG BACK ☐

OIL WELL ☒ GAS WELL ☐ OTHER ☐ SINGLE ZONE ☒ MULTIPLE ZONE ☐

2. Name of Operator

Mobil Oil Corporation

3. Address of Operator

P. O. Box 633, Midland, Texas 79701

4. Location of Well UNIT LETTER N LOCATED 2080 FEET FROM THE West LINE

AND 611 FEET FROM THE South LINE OF SEC. 12 TWP. 17-S RSE. 34-E NMPM

21. Elevations (Show whether DF, RI, etc.)

4022 GL

21A. Kind & Status Plug. Bond

On File

21B. Drilling Contractor

Marcum Drilling Co.

22. Approx. Date Work will start

Dec. 20, 1970

PROPOSED CASING AND CEMENT PROGRAM

SIZE OF HOLE	SIZE OF CASING	WEIGHT PER FOOT	SETTING DEPTH	SACKS OF CEMENT	EST. TOP
12 1/2	8 5/8	23#	1740	circulate	Surface
7 7/8	5 1/2	15.5#	1043		
7 7/8	5 1/2	14.0#	5374	circulate	Above Yates
7 7/8	5 1/2	15.5#	7049		Zone @ approx.
					2900'
7 7/8	5 1/2	17.0#	8651		
7 7/8	5 1/2	17.0#	8700		

Mud Program

0 - 1740 spud mud
1740 - 8500 brine water w/additions of oil as needed
8500 - 8700 brine water w/salt gel and starch

Logging Program

2600 - 4800 GR-SNP-Caliper
8000 - 8700
2600 - 4800 Dual Laterlog (LL-9)

IN ABOVE SPACE DESCRIBE PROPOSED PROGRAM; IF PROPOSAL IS TO DEEPEN OR PLUG BACK, GIVE DATA ON PRESENT PRODUCTIVE ZONE AND PROPOSED NEW PRODUCTIVE ZONE. GIVE BLOWOUT PREVENTER PROGRAM, IF ANY.

I hereby certify that the information above is true and complete to the best of my knowledge and belief.

Signed J. H. Seerey J. H. Seerey Title Associate Engineer Date 11-19-70

(This space for State Use)

APPROVED BY [Signature] TITLE DATE

CONDITIONS OF APPROVAL, IF ANY:

NEW MEXICO OIL CONSERVATION COMMISSION
WELL LOCATION AND ACREAGE DEDICATION PLAT

Form C-102
Supersedes C-128
Effective 1-1-65

All distances must be from the outer boundaries of the Section.

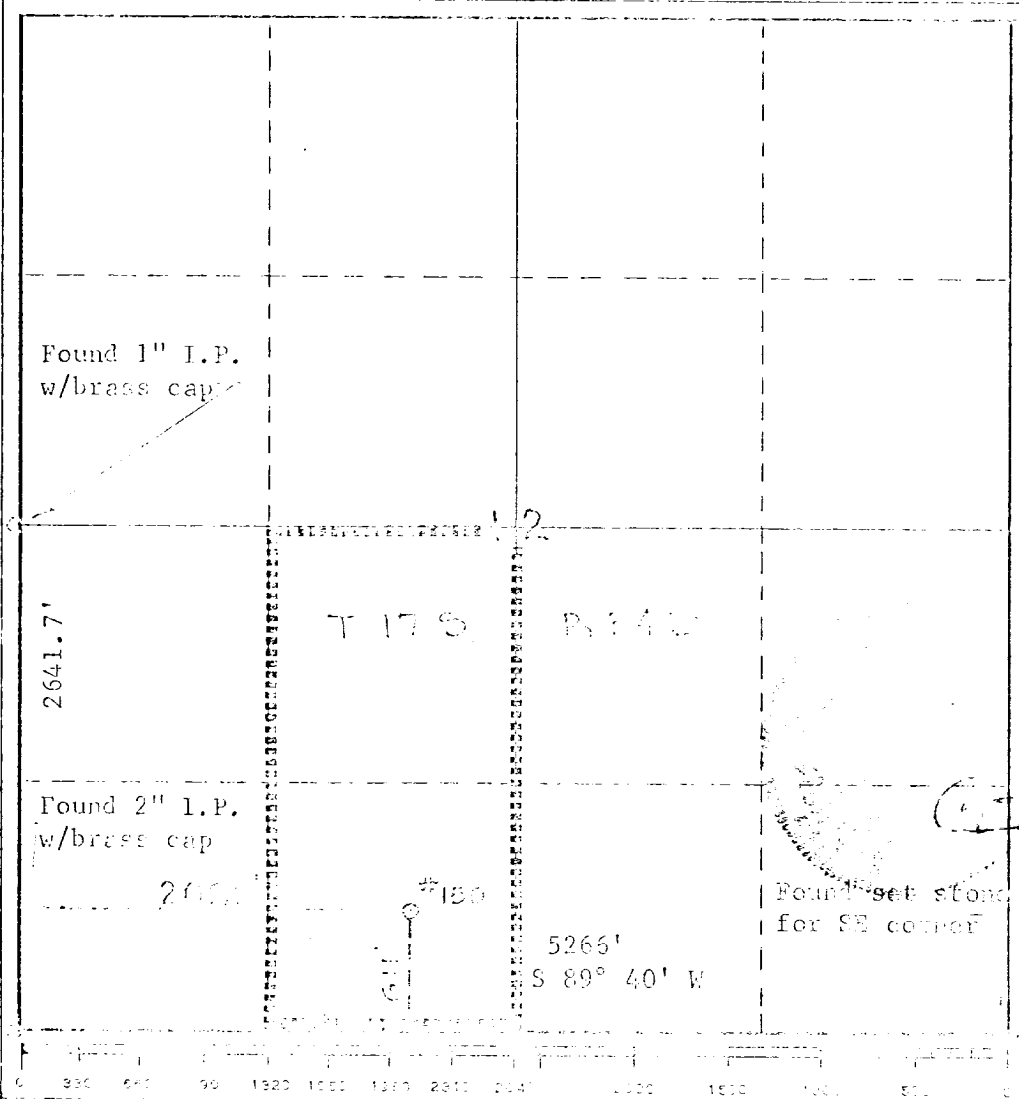
Operator Mobil Oil Corporation			Lease Bridges State		Well No. 150
Unit Letter N	Section 12	Township 17-S	Range 34-E	County Lea	
Annual Production of Well 2080 feet from the W line and 611 feet from the S line					
Ground Level Elev. 4022	Underlying Formation Abo		Soil Vacuum, North		Dedicated Acreage 80 Acres

1. Outline the acreage dedicated to the subject well by colored pencil or hatchure marks on the plat below.
2. If more than one lease is dedicated to the well, outline each and identify the ownership thereof (both as to working interest and royalty).
3. If more than one lease of different ownership is dedicated to the well, have the interests of all owners been consolidated by communitization, unitization, force-pooling, etc?

☐ Yes ☐ No If answer is "yes," type of consolidation _____

If answer is "no," list the owners and tract descriptions which have actually been consolidated. (Use reverse side of this form if necessary.) _____

No allowable will be assigned to the well until all interests have been consolidated (by communitization, unitization, forced-pooling, or otherwise) or until a non-standard unit, eliminating such interests, has been approved by the Commission.



CERTIFICATION	
I hereby certify that the information contained herein is true and complete to the best of my knowledge and belief.	
Name	<u>J. H. Seerey</u>
Position	<u>Associate Engineer</u>
Company	<u>Mobil Oil Corporation</u>
Date	<u>November 18, 1970</u>
I hereby certify that the well location shown on this plat was plotted from field notes of actual surveys made by me or under my supervision, and that the same is true and correct to the best of my knowledge and belief.	
Date Surveyed	<u>November 17, 1970</u>
Signed: <u>Curtis A. Callaway</u> Registered Professional Engineer and/or Land Surveyor	
Curtis A. Callaway	
3342	