

NEW MEXICO OIL CONSERVATION COMMISSION  
WELL LOCATION AND ACREAGE DEDICATION PLAT

Form C-102  
Supersedes C-128  
Effective 1-1-65

All distances must be from the outer boundaries of the Section.

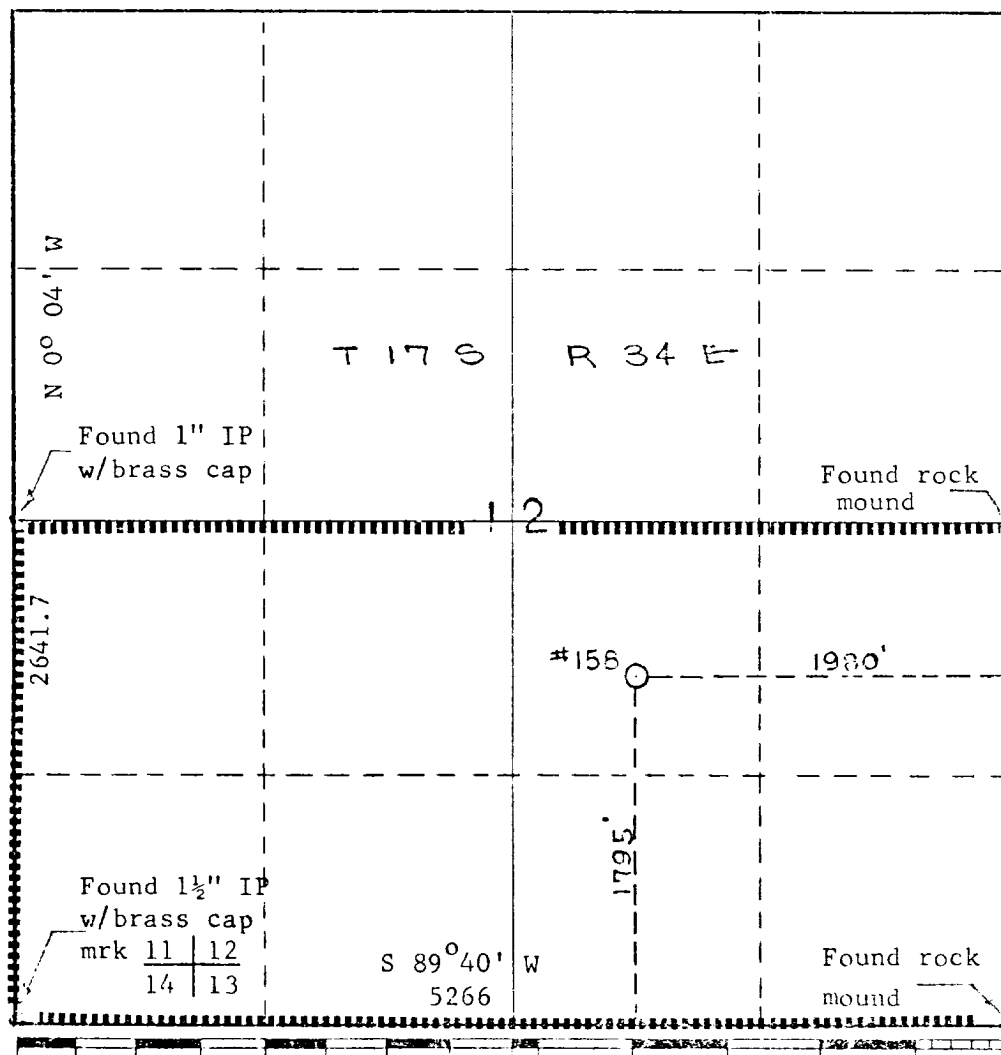
Operator MOBIL OIL CORPORATION		Lease Bridges State		Well No. 158
Unit Letter J	Section 12	Township 17 S	Range 34 E	County Lea
Actual Footage Location of Well: 1795 feet from the South line and 1980 feet from the East line				
Ground Level Elev. 4025	Producing Formation Morrow	Pool Undesignated	Dedicated Acreage: 320 Acres	

1. Outline the acreage dedicated to the subject well by colored pencil or hatchure marks on the plat below.
2. If more than one lease is dedicated to the well, outline each and identify the ownership thereof (both as to working interest and royalty).
3. If more than one lease of different ownership is dedicated to the well, have the interests of all owners been consolidated by communitization, unitization, force-pooling, etc?

☐ Yes ☐ No If answer is "yes," type of consolidation \_\_\_\_\_

If answer is "no," list the owners and tract descriptions which have actually been consolidated. (Use reverse side of this form if necessary.) \_\_\_\_\_

No allowable will be assigned to the well until all interests have been consolidated (by communitization, unitization, forced-pooling, or otherwise) or until a non-standard unit, eliminating such interests, has been approved by the Commission.



CERTIFICATION	
I hereby certify that the information contained herein is true and complete to the best of my knowledge and belief.	
Name	J.H. Seerey
Position	Associate Engineer
Company	MOBIL OIL CORPORATION
Date	February 19, 1971
I hereby certify that the well location shown on this plat was plotted from field notes of actual surveys made by me or under my supervision, and that the same is true and correct to the best of my knowledge and belief.	
Date Surveyed	February 17, 1971
Registered Professional Engineer and/or Land Surveyor	
Certificate No.	

171

RECEIVED

FEB 22 1971

OIL CONSERVATION COM.  
HOUSTON, TEX.