

NEW MEXICO OIL CONSERVATION COMMISSION
WELL LOCATION AND ACREAGE DEDICATION PLAT

AMENDED

and 102
pers. des C-128
Effective 1-1-65

All distances must be from the outer boundaries of the Section.

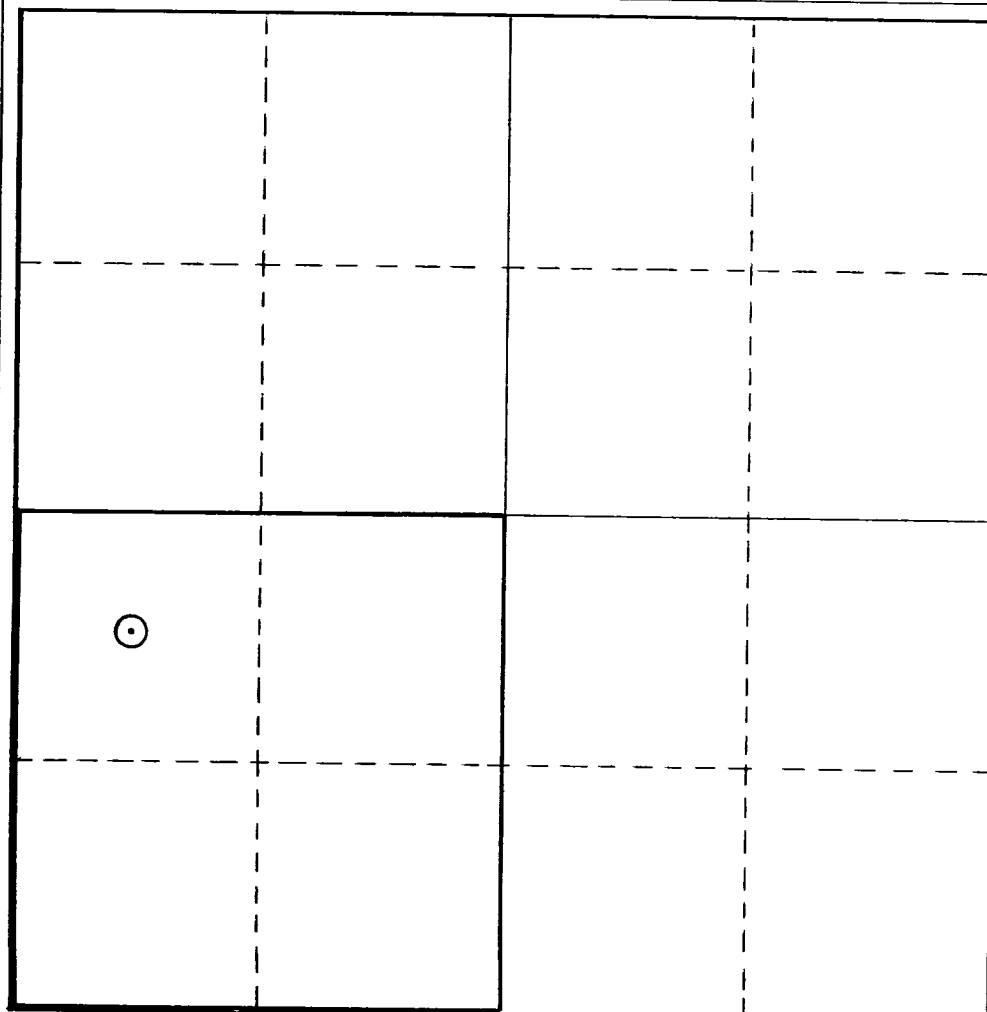
Operator Sun Oil Company		Lease Shearn Federal Com.		Well No. 1
Unit Letter L	Section 15	Township 19-S	Range 32-E	County Lea
Actual Footage Location of Well: 1980 feet from the South line and 660 feet from the West line				
Ground Level Elev: 3621.3	Producing Formation Wolfcamp	Pool East Lusk - Wolfcamp	Dedicated Acreage: 160 Acres	

1. Outline the acreage dedicated to the subject well by colored pencil or hachure marks on the plat below.
2. If more than one lease is dedicated to the well, outline each and identify the ownership thereof (both as to working interest and royalty).
3. If more than one lease of different ownership is dedicated to the well, have the interests of all owners been consolidated by communitization, unitization, force-pooling, etc?

☐ Yes ☐ No If answer is "yes," type of consolidation _____

If answer is "no," list the owners and tract descriptions which have actually been consolidated. (Use reverse side of this form if necessary.) _____

No allowable will be assigned to the well until all interests have been consolidated (by communitization, unitization, forced-pooling, or otherwise) or until a non-standard unit, eliminating such interests, has been approved by the Commission.



CERTIFICATION

I hereby certify that the information contained herein is true and complete to the best of my knowledge and belief.

Name Charles Gray
Position Proration Clerk
Company Sun Oil Company
Date March 15, 1974

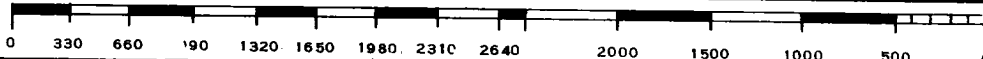
I hereby certify that the well location shown on this plat was plotted from field notes of actual surveys made by me or under my supervision, and that the same is true and correct to the best of my knowledge and belief.

Date Surveyed 11-19-71
Registered Professional Engineer
and/or Land Surveyor

John W. West

Certificate No.

676



REVISION
NEW MEXICO OIL CONSERVATION COMMISSION
WELL LOCATION AND ACREAGE DEDICATION PLAT

Form C-122
Supersedes C-128
Effective 1-1-65

All distances must be from the outer boundaries of the Section.

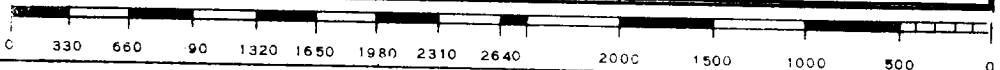
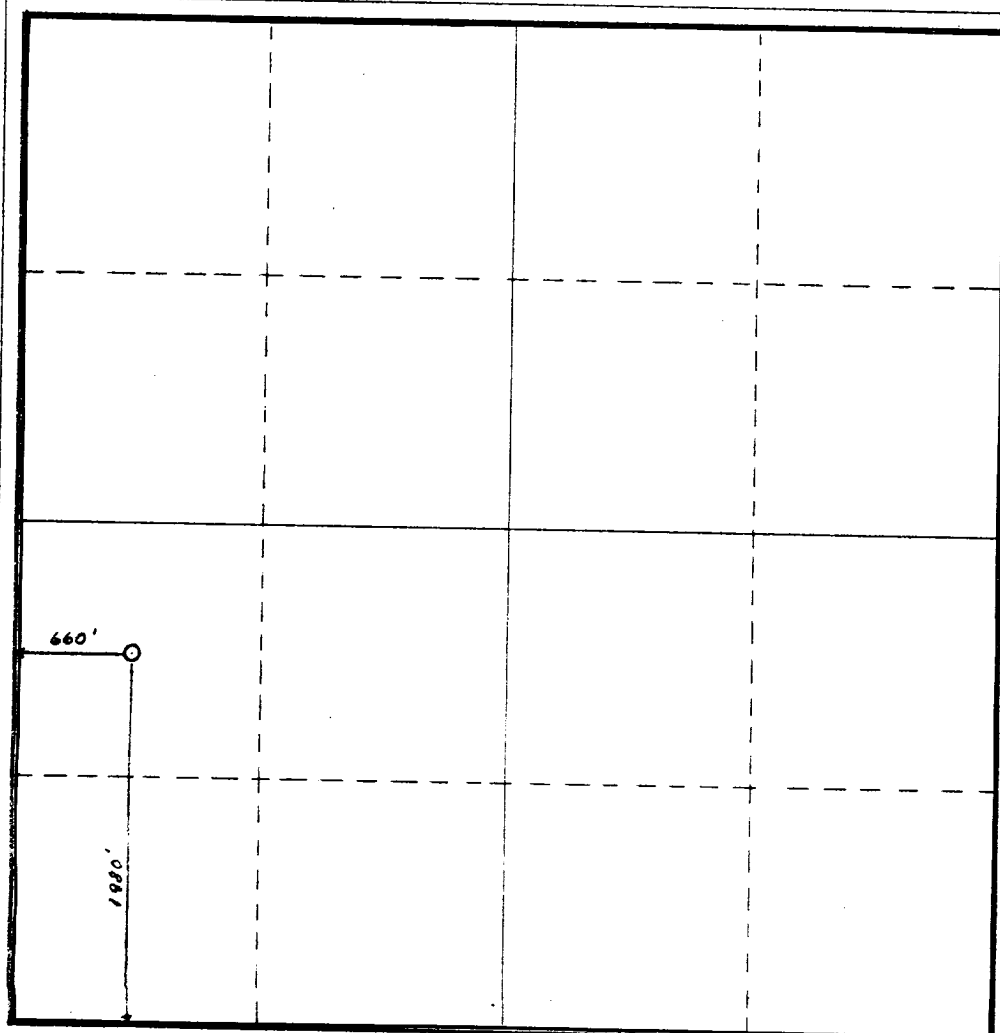
Operator Sun Oil Company of Delaware		Lease Shearn Federal Com.		Well No. 1
Unit Letter L	Section 15	Township 19 South	Range 32 East	County Lea
Actual Footage Location of Well: 1980 feet from the South line and 660 feet from the West line				
Ground Level Elev. 3621.3	Producing Formation Devonian	Pool Wildcat	Dedicated Acreage: 320 Acres	

1. Outline the acreage dedicated to the subject well by colored pencil or hachure marks on the plat below.
2. If more than one lease is dedicated to the well, outline each and identify the ownership thereof (both as to working interest and royalty).
3. If more than one lease of different ownership is dedicated to the well, have the interests of all owners been consolidated by communitization, unitization, force-pooling, etc?

☒ Yes ☐ No If answer is "yes," type of consolidation **Communitization**

If answer is "no," list the owners and tract descriptions which have actually been consolidated. (Use reverse side of this form if necessary.) _____

No allowable will be assigned to the well until all interests have been consolidated (by communitization, unitization, forced-pooling, or otherwise) or until a non-standard unit, eliminating such interests, has been approved by the Commission.



CERTIFICATION

I hereby certify that the information contained herein is true and complete to the best of my knowledge and belief.

Charles Gray
Name

Charles Gray

Position

Proration Clerk

Company

Sun Oil Company of Delaware

Date

October 27, 1972

I hereby certify that the well location shown on this plat was plotted from field notes of actual surveys made by me or under my supervision, and that the same is true and correct to the best of my knowledge and belief.

Date Surveyed

November 19, 1971

Registered Professional Engineer
and/or Land Surveyor

John W. West

Certificate No.

676

RECEIVED

OCT 30 1972

OIL CONSERVATION COMM.
HOBBS, N. M.