

NO. OF COPIES RECEIVED

DISTRIBUTION

SANTA FE

FILE

U.S.G.S.

LAND OFFICE

OPERATOR

NEW MEXICO OIL CONSERVATION COMMISSION

Form O-101  
Revised 1-1-65

5A. Indicate Type of Lease  
STATE ☒ FEE ☐

5. State Oil & Gas Lease No.  
B-1520

APPLICATION FOR PERMIT TO DRILL, DEEPEN, OR PLUG BACK

1a. Type of Work  
b. Type of Well  
OIL WELL ☒ GAS WELL ☐ OTHER ☐  
c. Name of Operator  
Mobil Oil Corporation  
d. Address of Operator  
P. O. Box 633, Midland, Texas, 79701  
4. Location of Well  
UNIT LETTER D LOCATED 660 FEET FROM THE North LINE  
AND 740 FEET FROM THE West LINE OF SEC. 14 TWP. 17S R. 34E N. 34W  
5. Name of Operator  
6. Name of Lease  
7. Unit Agreement Name  
8. Farm or Lease Name  
Bridges State  
9. Well No.  
170  
10. Field and Pool, or Wildcat  
North Vacuum  
11. County  
Lea  
12. Depth of Well  
8800  
13A. Formation  
Abo  
13B. Rotary or C.W.  
Rotary  
14. Elevations (Surface, Top of Hole, etc.)  
4037 Ground  
15. Kind of Cement Plug, Bond  
On File  
16. Drilling Contractor  
Unknown  
17. Approx. Date Work will start  
December 15, 1971

PROPOSED CASING AND CEMENT PROGRAM

SIZE OF HOLE	SIZE OF CASING	WEIGHT PER FOOT	SETTING DEPTH	SACKS OF CEMENT	EST. TOP
15"	12-3/4	34#	250	Circulate	Surface
11"	8-5/8	28#	3060	Circulate	Surface
7-7/8"	5-1/2	17#	8800	Circulate	Surface

This well is being drilled to replace Well #141 which has collapsed casing at 3000'.

THE OPERATOR HAS BEEN ADVISED  
OF THE REQUIREMENTS OF THE  
COMMISSION AND HAS AGREED TO  
COMPLY THEREWITH.

APPROVAL AND  
FOR GOVERNMENT USE  
DATE 12-13-71

IN ABOVE SPACE DESCRIBE PROPOSED PROGRAM; IF PROPOSAL IS TO DEEPEN OR PLUG BACK, GIVE DATA ON PRESENT PRODUCTIVE ZONE AND PROPOSED NEW PRODUCTIVE ZONE. GIVE BLOWOUT PREVENTER PROGRAM, IF ANY.

I hereby certify that the information above is true and complete to the best of my knowledge and belief.

Signed A. D. Bond A. D. Bond Title Proration Staff Assistant Date December 9, 1971

(This space for State Use)

APPROVED BY [Signature] TITLE DISTRICT DATE DEC 13 1971

CONDITIONS OF APPROVAL, IF ANY:

NEW MEXICO OIL CONSERVATION COMMISSION  
WELL LOCATION AND ACREAGE DEDICATION PLAT

Form C-102  
Supersedes C-128  
Effective 1-1-65

All distances must be from the outer boundaries of the Section.

Operator <b>Mobil Oil Corporation</b>			Ledge <b>Bridges State</b>		Well No. <b>170</b>
Unit Letter <b>D</b>	Section <b>14</b>	Township <b>17S</b>	Range <b>34E</b>	County <b>Lea</b>	
Actual Plotting Location of Well: <b>660</b> feet from the <b>North</b> line and <b>740</b> feet from the <b>West</b> line					
Ground Level Elev. <b>4037</b>	Producing Formation <b>Abo</b>	Pool <b>North Vacuum</b>	Dedicated Acreage: <b>80</b> Acres		

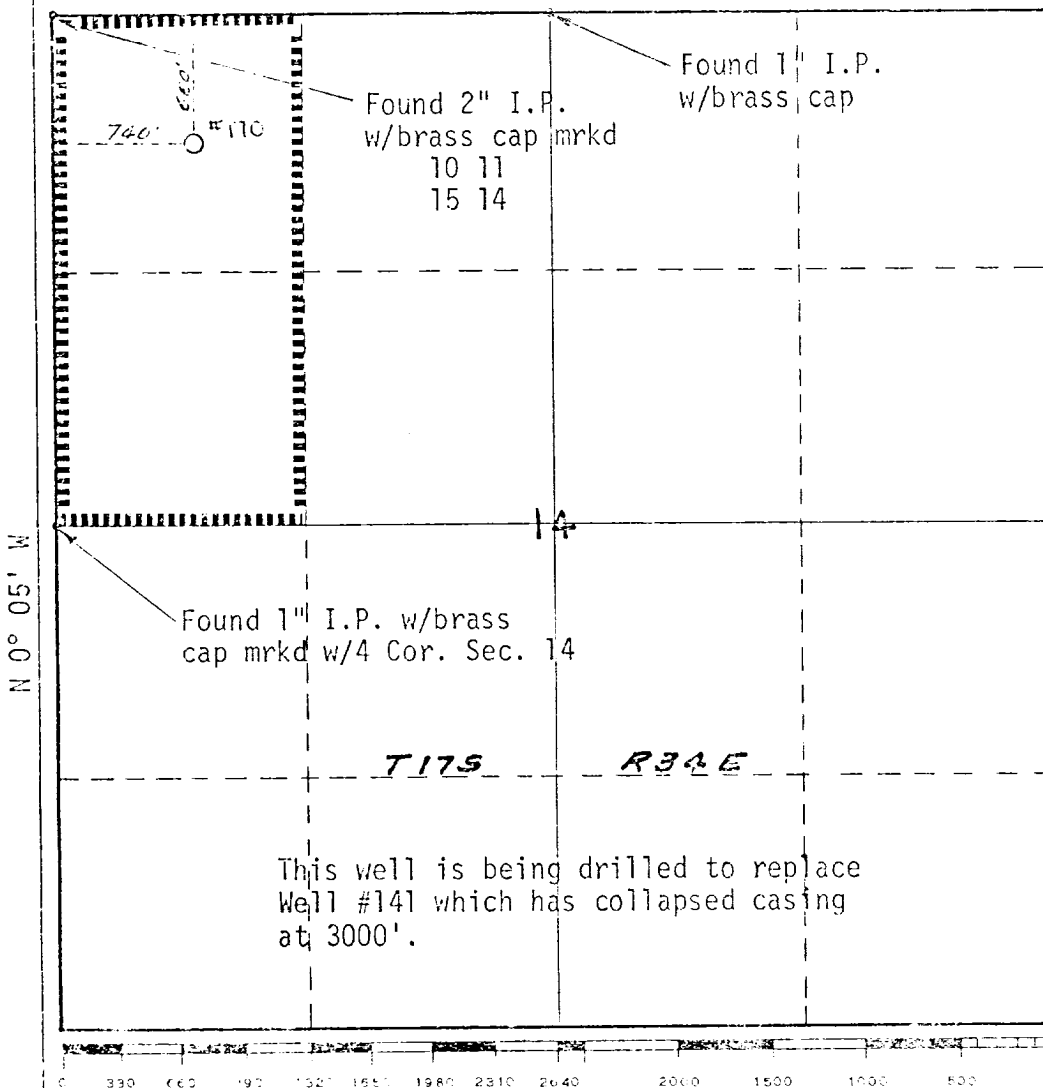
1. Outline the acreage dedicated to the subject well by colored pencil or hatchure marks on the plat below.
2. If more than one lease is dedicated to the well, outline each and identify the ownership thereof (both as to working interest and royalty).
3. If more than one lease of different ownership is dedicated to the well, have the interests of all owners been consolidated by communitization, unitization, force-pooling, etc?

☐ Yes ☐ No If answer is "yes," type of consolidation \_\_\_\_\_

If answer is "no," list the owners and tract descriptions which have actually been consolidated. (Use reverse side of this form if necessary.) \_\_\_\_\_

No allowable will be assigned to the well until all interests have been consolidated (by communitization, unitization, forced-pooling, or otherwise) or until a non-standard unit, eliminating such interests, has been approved by the Commission.

2646.3 S 89° 40' W 2646.3



CERTIFICATION

I hereby certify that the information contained herein is true and complete to the best of my knowledge and belief.

*A. D. Bond*

Name

A. D. Bond

Position

Proration Staff Assistant

Company

Mobil Oil Corporation

Date

December 9, 1971

I hereby certify that the well location shown on this plat was plotted from field notes of actual surveys made by me or under my supervision, and that the same is true and correct to the best of my knowledge and belief.

Date Surveyed

December 8, 1971

Registered Professional Engineer and/or Land Surveyor

*J. F. Godfrey, Jr.*  
J. F. Godfrey, Jr.

Certificate No.

2663

11A

RECEIVED

1947

OIL CONSERVATION  
BUREAU