

NO. OF COPIES RECEIVED	
DISTRIBUTION	
SANTA FE	
FILE	
U.S.G.S.	
LAND OFFICE	
OPERATOR	

# NEW MEXICO OIL CONSERVATION COMMISSION

Form C-101  
Revised 1-1-65 *2-125-241-1*

5A. Indicate Type of Lease  
STATE ☒ FEE ☐  
5. State Oil & Gas Lease No.  
**K-6880**

## APPLICATION FOR PERMIT TO DRILL, DEEPEN, OR PLUG BACK

1a. Type of Work b. Type of Well OIL WELL <input checked="" type="checkbox"/> GAS WELL <input type="checkbox"/> OTHER <input type="checkbox"/> SINGLE ZONE <input checked="" type="checkbox"/> MULTIPLE ZONE <input type="checkbox"/>		7. Unit Agreement Name	
2. Name of Operator <b>Wolfson Oil Co.</b>		8. Farm or Lease Name <b>Sec-State</b>	
3. Address of Operator <b>3206 Republic Bank Tower Dallas, Texas</b>		9. Well No. <b>1</b>	
4. Location of Well UNIT LETTER <b>J</b> LOCATED <b>2310</b> FEET FROM THE <b>South</b> LINE AND <b>1920</b> FEET FROM THE <b>East</b> LINE OF SEC. <b>7</b> TWP. <b>17S</b> RGE. <b>34E</b> NMPM		10. Field and Pool, or Wildcat <b>Vacuum (C-SA)</b>	
12. County <b>Lea</b>			
19. Proposed Depth <b>4900</b>		19A. Formation <b>San Andres</b>	
20. Rotary or C.T. <b>Rotary</b>			
21. Elevations (Show whether DF, RT, etc.) <b>4415 Gr.</b>		21A. Kind & Status Plug. Bond <b>Travelers 552412</b>	
21B. Drilling Contractor <b>Unknown</b>		22. Approx. Date Work will start <b>As soon as possible</b>	

### PROPOSED CASING AND CEMENT PROGRAM

SIZE OF HOLE	SIZE OF CASING	WEIGHT PER FOOT	SETTING DEPTH	SACKS OF CEMENT	EST. TOP
<b>12</b>	<b>8 5/8</b>	<b>20</b>	<b>400</b>	<b>200</b>	<b>Surface</b>
<b>7 7/8</b>	<b>4 1/2</b>	<b>9.5</b>	<b>4900</b>	<b>200</b>	<b>4300</b>

APPROVAL MADE  
FOR OIL & GAS  
DRILLING OPERATIONS

EXPIRES **8-18-72**

IN ABOVE SPACE DESCRIBE PROPOSED PROGRAM: IF PROPOSAL IS TO DEEPEN OR PLUG BACK, GIVE DATA ON PRESENT PRODUCTIVE ZONE AND PROPOSED NEW PRODUCTIVE ZONE. GIVE BLOWOUT PREVENTER PROGRAM, IF ANY.

I hereby certify that the information above is true and complete to the best of my knowledge and belief.

Signed **J. C. Freedman** Title **Prod. Engr.** Date **5-17-72**

(This space for State Use)

APPROVED BY **J. C. Freedman** TITLE **SUPERVISOR DISTRICT I** DATE **MAY 18 1972**

CONDITIONS OF APPROVAL, IF ANY:

RECEIVED

MAY 18 1972

OIL CONSERVATION COMM.  
HOBBS, N. M.

5561

**NEW MEXICO OIL CONSERVATION COMMISSION  
WELL LOCATION AND ACREAGE DEDICATION PLAT**

Form O-12  
Supersedes O-12H  
Effective 1-1-65

All distances must be from the outer boundaries of the Section

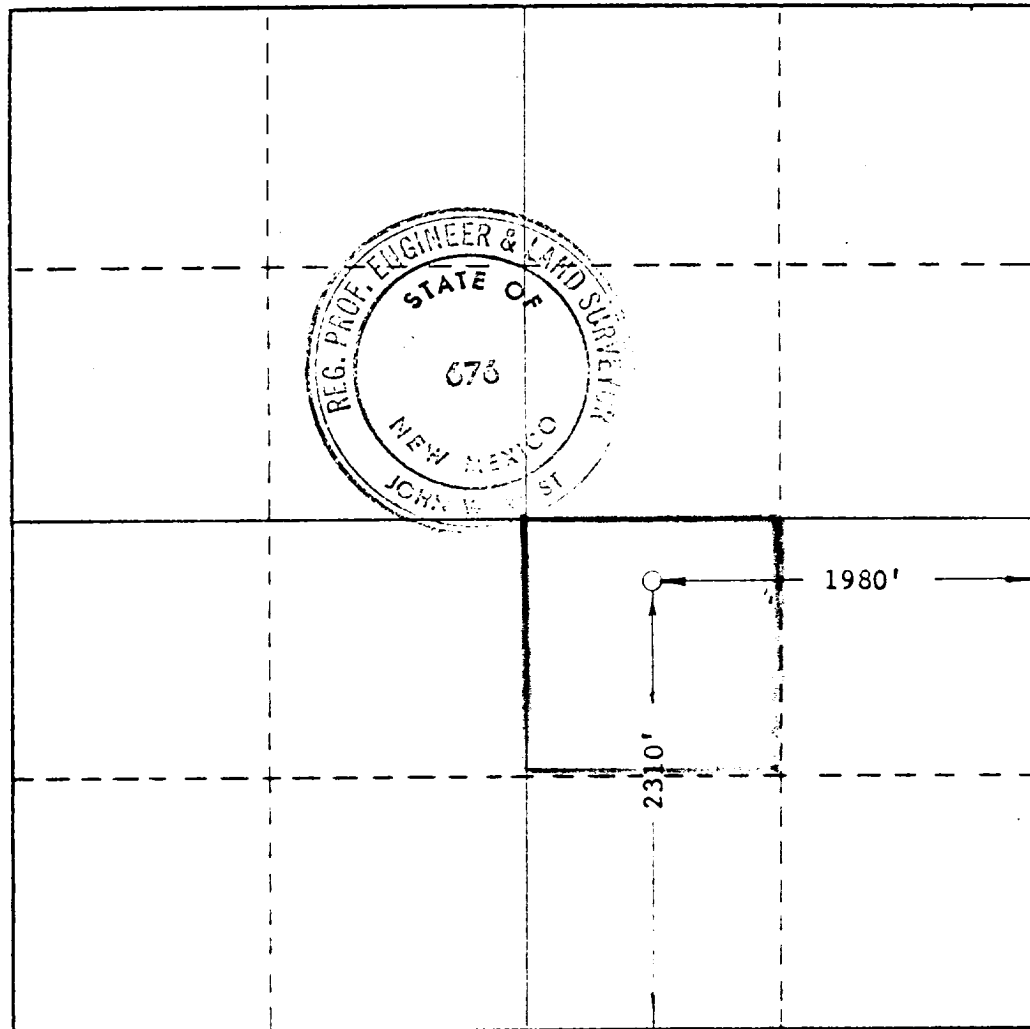
Operator <b>WOLFSON OIL COMPANY</b>			Lease <b>MAC STATE</b>		Well No. <b>1</b>
Unit Letter <b>J</b>	Section <b>7</b>	Township <b>17 SOUTH</b>	Range <b>34 EAST</b>	County <b>LEA</b>	
Actual Footage Location of Well: <b>2310</b> feet from the <b>SOUTH</b> line and <b>1980</b> feet from the <b>EAST</b> line					
Ground Level Elev. <b>4115'</b>	Producing Formation <b>Grayburg-San Andres</b>	Pool <b>Vacuum (G-3A)</b>	Estimated Acreage: <b>40</b>		

1. Outline the acreage dedicated to the subject well by colored pencil or hachure marks on the plat below.
2. If more than one lease is dedicated to the well, outline each and identify the ownership thereof (both as to working interest and royalty).
3. If more than one lease of different ownership is dedicated to the well, have the interests of all owners been consolidated by communitization, unitization, force-pooling, etc?

☐ Yes    ☐ No    If answer is "yes," type of consolidation \_\_\_\_\_

If answer is "no," list the owners and tract descriptions which have actually been consolidated. (Use reverse side of this form if necessary.) \_\_\_\_\_

No allowable will be assigned to the well until all interests have been consolidated (by communitization, unitization, forced-pooling, or otherwise) or until a non-standard unit, eliminating such interests, has been approved by the Commission.



**CERTIFICATION**

I hereby certify that the information contained herein is true and complete to the best of my knowledge and belief.

*H. G. Freedman*  
Name

**H. G. Freedman**

Position

**Prod. Engr.**

Company

**Wolfson Oil Co.**

Date

**5-17-72**

I hereby certify that the well location shown on this plat was plotted from field notes of actual surveys made by me or under my supervision, and that the same is true and correct to the best of my knowledge and belief.

Date Surveyed

**MAY 8, 1972**

Registered Professional Engineer and/or Land Surveyor

*John W. West*  
Certificate No. **676**

0 500 1000 1500 2000 2500 3000 3300

172

RECEIVED

MAY 10 1972

OIL CONSERVATION COMM.  
HOBBS, N. M.