

UNITED STATES
DEPARTMENT OF THE INTERIOR
GEOLOGICAL SURVEY

(Other instructions on reverse side)

Budget Bureau No. 42-R1425.

APPLICATION FOR PERMIT TO DRILL, DEEPEN, OR PLUG BACK

1a. TYPE OF WORK

DRILL ☒DEEPEN ☐PLUG BACK ☐

b. TYPE OF WELL

OIL WELL ☒GAS WELL ☐

OTHER

SINGLE ZONE ☒MULTIPLE ZONE ☐

2. NAME OF OPERATOR

Mobil Oil Corporation

3. ADDRESS OF OPERATOR

P. O. Box 633 Midland, Texas 79701

4. LOCATION OF WELL (Report location clearly and in accordance with any State requirements.)*

At surface

1450' FNL & 70' FWL Sec. 19, T 18S, R 34E

At proposed prod. zone

Same As Surface

14. DISTANCE IN MILES AND DIRECTION FROM NEAREST TOWN OR POST OFFICE*

10. DISTANCE FROM PROPOSED*

LOCATION TO NEAREST PROPERTY OR LEASE LINE, FT.
(Also to nearest drlg. unit line, if any) ---

18. DISTANCE FROM PROPOSED LOCATION*

TO NEAREST WELL, DRILLING, COMPLETED, OR APPLIED FOR, ON THIS LEASE, FT. ---

16. NO. OF ACRES IN LEASE

2895.36

19. PROPOSED DEPTH

4800

17. NO. OF ACRES ASSIGNED TO THIS WELL

40

20. ROTARY OR CABLE TOOLS

Rotary

21. ELEVATIONS (Show whether DF, RT, GR, etc.)

3965' Ground

22. APPROX. DATE WORK WILL START*

When permit approved

23.

PROPOSED CASING AND CEMENTING PROGRAM

SIZE OF HOLE	SIZE OF CASING	WEIGHT PER FOOT	SETTING DEPTH	QUANTITY OF CEMENT
12 1/4	8 5/8	20# Gr. LBF	350	(1) Circulate to Surface
7 7/8	5 1/2	14# Gr. J-55	4800	(2) Circulate to Surface

(1) Class A Containing 2% Ca Cl₂.

(2) Light weight slurry (13.1#/gal) containing 7 1/2# salt/sx. & tail in with sufficient Class C to cover pay zone.

Mud Program:

0'	-	350'	Sand Mud
350'	-	1600'	Fresh Water
1600'	-	4200'	Saturated Brine
4200'	-	4800'	Saturated Brine, Salt Gel & Starch

Blowout Preventers:

Casing String
SurfaceEquipment Size & API Series
8" 600No. & Type
1-Pipe & 1-BlankTest Press.
1000

IN ABOVE SPACE DESCRIBE PROPOSED PROGRAM: If proposal is to deepen or plug back, give data on present productive zone and proposed new productive zone. If proposal is to drill or deepen directionally, give pertinent data on subsurface locations and measured and true vertical depths. Give blowout preventer program, if any.

24.

SIGNED

A. D. Bond

A. D. Bond

TITLE Proration Staff Assistant

DATE June 19, 1972

(This space for Federal or State office use)

PERMIT NO.

APPROVAL DATE

APPROVED BY

TITLE

CONDITIONS OF APPROVAL, IF ANY:

*See Instructions On Reverse Side

RECEIVED

JUL 27 1972

OIL CONSERVATION COMM.
HILLS 6-12

NEW MEXICO OIL CONSERVATION COMMISSION
WELL LOCATION AND ACREAGE DEDICATION PLAT

Form C-102
Supersedes C-128
Effective 1-1-65

All distances must be from the outer boundaries of the Section.

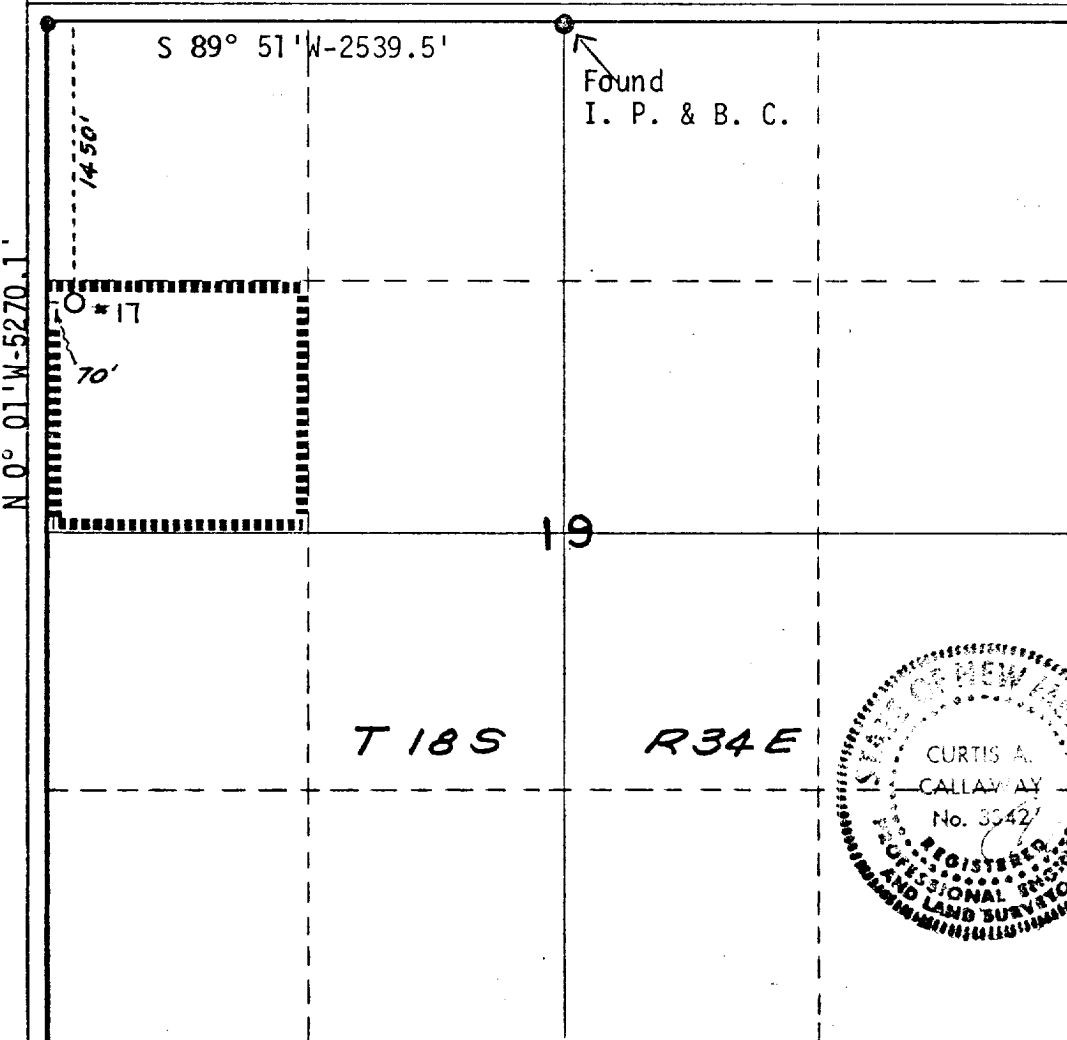
Operator Mobil Oil Corporation			Lease		Well No. 17
Unit Letter E	Section 19	Township 18S	Range 34E	County Lea	
Actual Footage Location of Well: 1450 feet from the North line and 70 feet from the West line					
Ground Level Elev. 3965	Producing Formation Queen		Pool E-K Queen		Dedicated Acreage: 40 Acres

1. Outline the acreage dedicated to the subject well by colored pencil or hachure marks on the plat below.
2. If more than one lease is dedicated to the well, outline each and identify the ownership thereof (both as to working interest and royalty).
3. If more than one lease of different ownership is dedicated to the well, have the interests of all owners been consolidated by communitization, unitization, force-pooling, etc?

☐ Yes ☐ No If answer is "yes," type of consolidation _____

If answer is "no," list the owners and tract descriptions which have actually been consolidated. (Use reverse side of this form if necessary.) _____

No allowable will be assigned to the well until all interests have been consolidated (by communitization, unitization, forced-pooling, or otherwise) or until a non-standard unit, eliminating such interests, has been approved by the Commission.



CERTIFICATION

I hereby certify that the information contained herein is true and complete to the best of my knowledge and belief.

A. D. Bond

Name
A. D. Bond
Position
Proration Staff Assistant

Company
Mobil Oil Corporation

Date
June 2, 1972

I hereby certify that the well location shown on this plat was plotted from field notes of actual surveys made by me or under my supervision, and that the same is true and correct to the best of my knowledge and belief.

Curtis A. Callaway

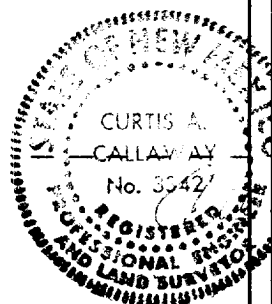
Date Surveyed
May 27, 1972

Registered Professional Engineer and/or Land Surveyor

Curtis A. Callaway

Certificate No.

3342



RECEIVED

JUL 21 1972

OIL CONSERVATION COMM.
HOEES, W. 4