

RECEIVED

1972 1 10

OIL CONSERVATION COM. M.
HOBBS, N. M.

NEW MEXICO OIL CONSERVATION COMMISSION
WELL LOCATION AND ACREAGE DEDICATION PLAT

Form O-102
Supersedes O-128
Effective 1-1-65

All distances must be from the outer boundaries of the Section.

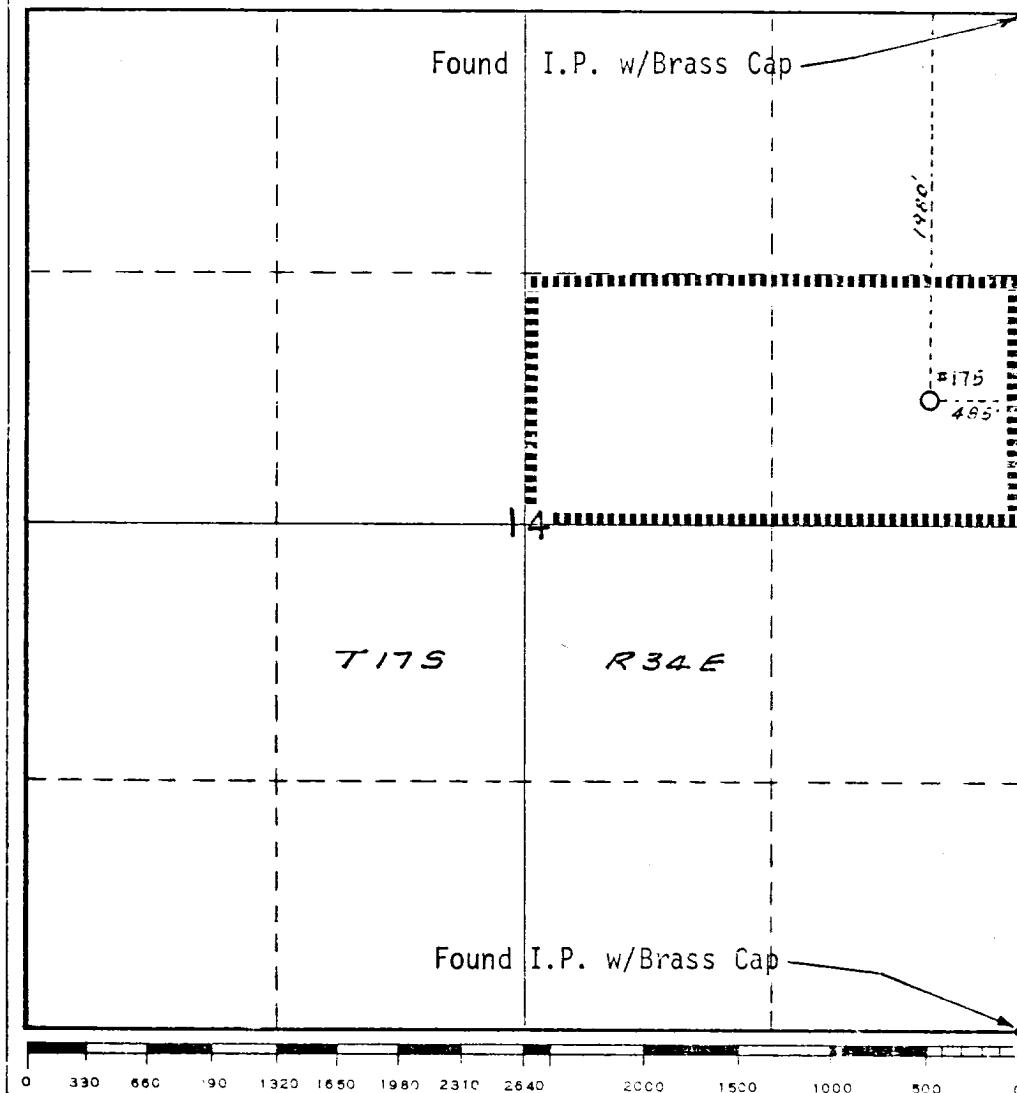
Operator Mobil Oil Corporation			Lease Bridges State		Well No. 175
Unit Letter H	Section 14	Township 17S	Range 34E	County Lea	
Actual Point Location of Well: 1980' feet from the North line and 485 feet from the East line					
Ground Level Elev. 4017	Producing Formation Abo		Pool Vacuum, North		Dedicated Acreage: 80 Acres

1. Outline the acreage dedicated to the subject well by colored pencil or hachure marks on the plat below.
2. If more than one lease is dedicated to the well, outline each and identify the ownership thereof (both as to working interest and royalty).
3. If more than one lease of different ownership is dedicated to the well, have the interests of all owners been consolidated by communitization, unitization, force-pooling, etc?

☐ Yes ☐ No If answer is "yes," type of consolidation _____

If answer is "no," list the owners and tract descriptions which have actually been consolidated. (Use reverse side of this form if necessary.) _____

No allowable will be assigned to the well until all interests have been consolidated (by communitization, unitization, forced-pooling, or otherwise) or until a non-standard unit, eliminating such interests, has been approved by the Commission.



CERTIFICATION

I hereby certify that the information contained herein is true and complete to the best of my knowledge and belief.

A. D. Bond
Name
A. D. Bond

Position
Proration Staff Assistant

Company
Mobil Oil Corporation

Date
December 13, 1972

I hereby certify that the well location shown on this plat was plotted from field notes of actual surveys made by me or under my supervision, and that the same is true and correct to the best of my knowledge and belief.

Wilson D. Watson, Jr.
Date Surveyed
February 14, 1972

Registered Professional Engineer and/or Land Surveyor

Wilson D. Watson, Jr.

Certificate No.

3959

68-2-89
negative image

RECEIVED

1 1978



IL CONSERVATION COMM.
HOBBS, N. M.