

| | |
|------------------------|--|
| NO. OF COPIES RECEIVED | |
| DISTRIBUTION | |
| SANTA FE | |
| FILE | |
| U.S.G.S. | |
| LAND OFFICE | |
| OPERATOR | |

NEW MEXICO OIL CONSERVATION COMMISSION

Form C-101
Revised 1-1-65

| | |
|---|------------------------------|
| 5A. Indicate Type of Lease | |
| STATE <input checked="" type="checkbox"/> | FEE <input type="checkbox"/> |
| 5. State Oil & Gas Lease No. | |
| B-867-1 | |

APPLICATION FOR PERMIT TO DRILL, DEEPEN, OR PLUG BACK

| | | | |
|--|--|----------------------------------|--|
| 1a. Type of Work | | 7. Unit Agreement Name | |
| b. Type of Well OIL WELL <input checked="" type="checkbox"/> GAS WELL <input type="checkbox"/> OTHER <input type="checkbox"/> | | 8. Farm or Lease Name Vacuum | |
| DEEPEN <input type="checkbox"/> PLUG BACK <input type="checkbox"/> | | Grayburg San Andres Unit | |
| 2. Name of Operator | | 9. Well No. | |
| TEXACO INC. % DARRELL SMITH | | 47 | |
| 3. Address of Operator | | 10. Field and Pool, or Wildcat | |
| P. O. BOX 3109, MIDLAND, TEXAS 79701 | | Vacuum Grayburg San Andres | |
| 4. Location of Well | | 12. County | |
| UNIT LETTER H LOCATED 1230' FEET FROM THE North LINE | | Lea | |
| AND 10' FEET FROM THE East LINE OF SEC. 2 TWP. 18S RGE. 34E NMPM | | | |
| 19. Proposed Depth | | 20. Rotary or C.T. | |
| 4800' | | Rotary | |
| 21. Elevations (Show whether DF, RT, etc.) | | 22. Approx. Date Work will start | |
| Gr. 4003' | | At Once | |
| 21A. Kind & Status Plug. Bond | | 21B. Drilling Contractor | |
| \$10,000 Blanket | | Unknown | |

PROPOSED CASING AND CEMENT PROGRAM

| SIZE OF HOLE | SIZE OF CASING | WEIGHT PER FOOT | SETTING DEPTH | SACKS OF CEMENT | EST. TOP |
|--------------|----------------|-----------------|---------------|-----------------|------------------------------------|
| 11" | 8 5/8" | 20# | 350' | *210 sx | 300% to circulate |
| 7 7/8" | 4 1/2" | 9.5# | 4800' | **450 sx | 200% to bring cement top to 2,000' |

*210 sx Class C + 2% CaCl₂ 14.8 ppg (cement must circulate) 300% to circulate

**450 sx Class C + 12% Gel, 12.38 ppg followed by 200 sx Class C 14.8 ppg - 200% to bring cement top to 2,000'

FORMATION TOPS

Grayburg 4220'
San Andres 4420'
Total Depth 4800'

APPROVAL VALID FOR 90 DAYS UNLESS DRILLING COMMENCED, EXPIRES April 3, 1973

IN ABOVE SPACE DESCRIBE PROPOSED PROGRAM: IF PROPOSAL IS TO DEEPEN OR PLUG BACK, GIVE DATA ON PRESENT PRODUCTIVE ZONE AND PROPOSED NEW PRODUCTIVE ZONE. GIVE BLOWOUT PREVENTER PROGRAM, IF ANY.

I hereby certify that the information above is true and complete to the best of my knowledge and belief.

Signed J. E. Valten Title Division Civil Engineer Date January 31, 1973
(This space for State Use)

APPROVED BY John W. Runyan TITLE State Engineer DATE February 1, 1973
CONDITIONS OF APPROVAL, IF ANY:

NEW MEXICO OIL CONSERVATION COMMISSION
WELL LOCATION AND ACREAGE DEDICATION PLAT

Form C-102
Supersedes C-128
Effective 1-1-65

All distances must be from the outer boundaries of the Section.

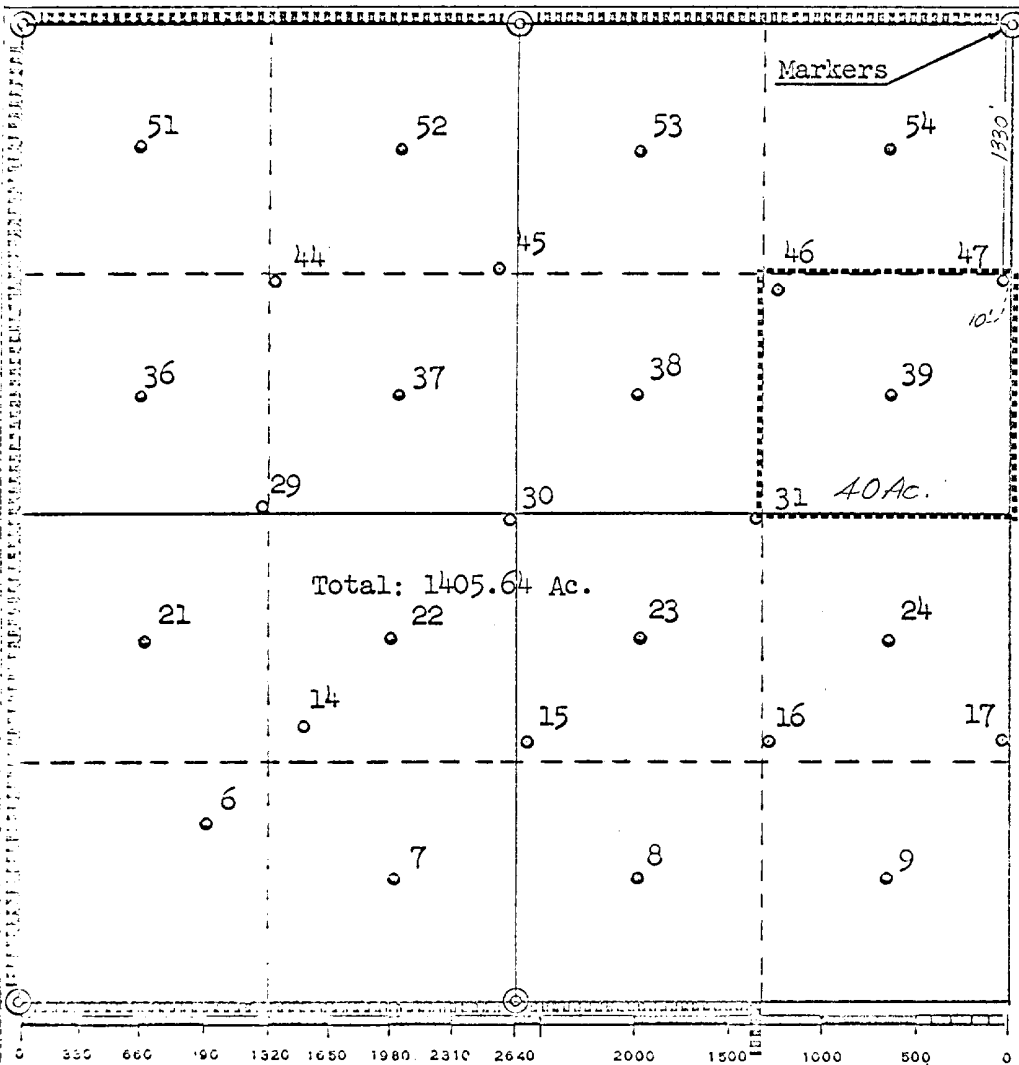
| | | | | |
|---|---|---|---------------------------------------|-----------------------|
| Operator TEXACO Inc. | | Lease Vacuum Grayburg San Andres Unit | | Well No. 47 |
| Section 1 | Township 13 - South | Range 34 - East | County Tex | |
| Actual Wellbore Location of Well: 1330' feet from the North line and 10' feet from the East line Sec. 2 | | | | |
| Ground Level Elev. 4003' | Producing Formation Grayburg - San Andres | Pool Vacuum Grayburg San Andres | Dedicated Acreage: 40 Acres | |

1. Outline the acreage dedicated to the subject well by colored pencil or hachure marks on the plat below.
2. If more than one lease is dedicated to the well, outline each and identify the ownership thereof (both as to working interest and royalty).
3. If more than one lease of different ownership is dedicated to the well, have the interests of all owners been consolidated by communitization, unitization, force-pooling, etc?

☒ Yes ☐ No If answer is "yes," type of consolidation Unitization

If answer is "no," list the owners and tract descriptions which have actually been consolidated. (Use reverse side of this form if necessary.)

No allowable will be assigned to the well until all interests have been consolidated (by communitization, unitization, forced-pooling, or otherwise) or until a non-standard unit, eliminating such interests, has been approved by the Commission.



| | |
|---|--------------------------------|
| CERTIFICATION | |
| I hereby certify that the information contained herein is true and complete to the best of my knowledge and belief. | |
| Name | J. J. Velten |
| Position | Division Civil Engineer |
| Company | TEXACO Inc. |
| Date | 1/31/73 |
| I hereby certify that the well location shown on this plat was plotted from field notes of actual surveys made by me or under my supervision, and that the same is true and correct to the best of my knowledge and belief. | |
| Date Surveyed | 1/30/73 |
| Registered Professional Engineer and/or Land Surveyor | J. J. Velten |
| Certificate No. | 8174 |

173

173