



NEW MEXICO ENERGY, MINERALS
& NATURAL RESOURCES DEPARTMENT

OIL CONSERVATION DIVISION
DISTRICT I HOBBS
1625 N. French Dr., Hobbs, NM 88241
(505) 393-6161
FAX (505) 393-0720

Jennifer A. Salisbury
CABINET SECRETARY

March 24, 2000

Sage Energy Company
P.O. Box 3068
Midland, TX 79702

RE: REGULATORY REPORTING C-103
NVANU '6' C #1-B-1-17-34
NVANU '1' B #1-F-1-17-34

Gentlemen:

The Oil Conservation Division requests that the enclosed correspondence with test charts, be submitted on Sundry Notice Form C-103.

The OCD will keep on file the original test charts for both wells referenced above.

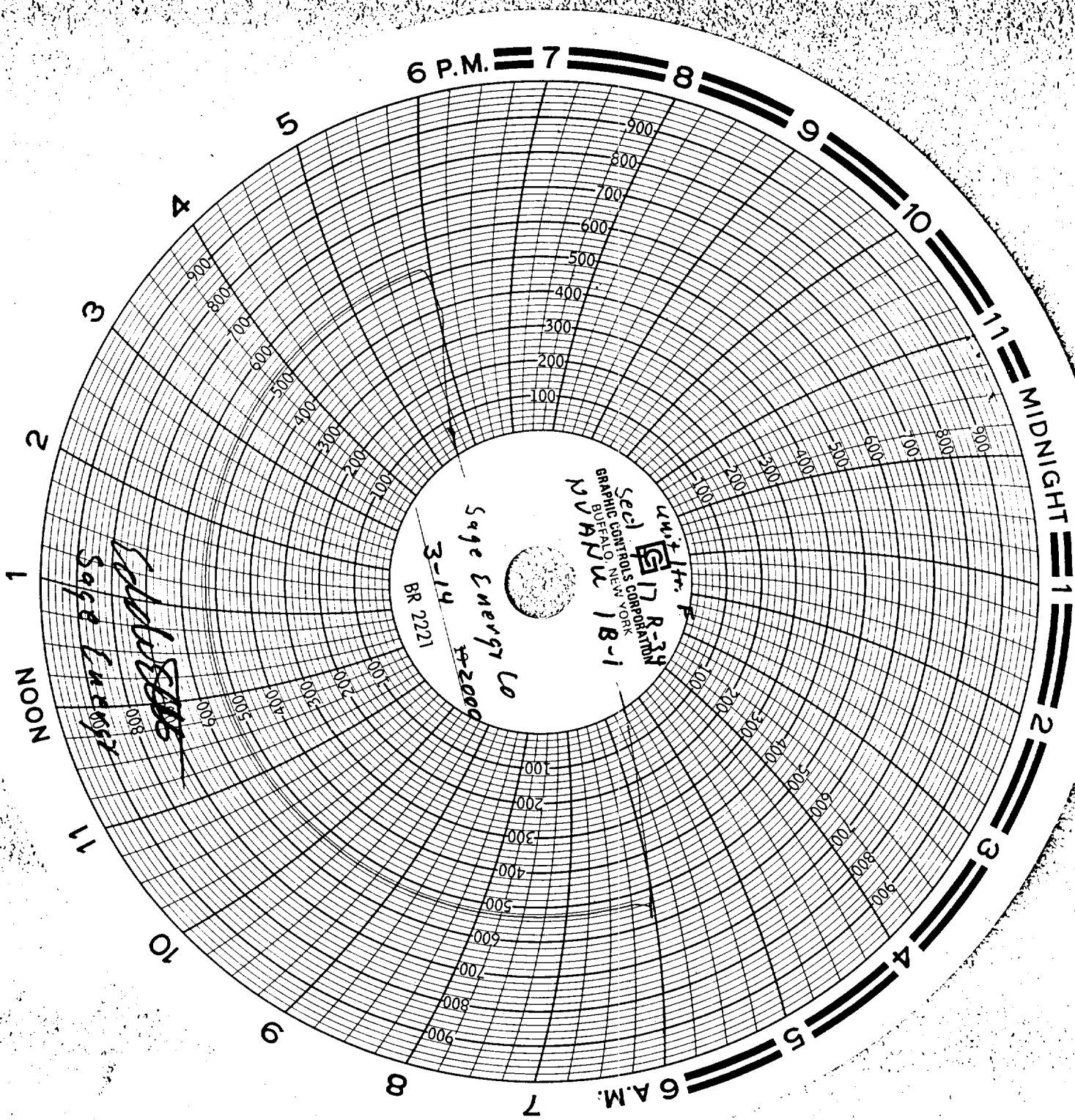
If you have any questions, please contact Sylvia A. Dickey, ext. 112 or Donna Pitzer at ext. 115.

Sincerely,

A handwritten signature in cursive script that reads "Chris Williams".

CHRIS WILLIAMS
District I Supervisor

cc: Eddie Elliott-Lovington, NM
file



SAGE ENERGY COMPANY

NVANU 1B-1

KEY ENERGY SERVICES

3/10/00

MOVE IN AND RIG UP. UNFLANGE WELL AND WORK WITH PACKER TO TRY AND SEAL LEAK. PRESURE UP CASING TO 500 PSI HELD OK. FLANGE WELL BACK UP AND PUT ON INJECTION.

3/11/00

WELL STILL DRIPPING THIS AM. POOH WITH TUBING AND PACKER TEFLON TAPE EVERY COLLAR TOP AND BOTTOM. SWI AND SD

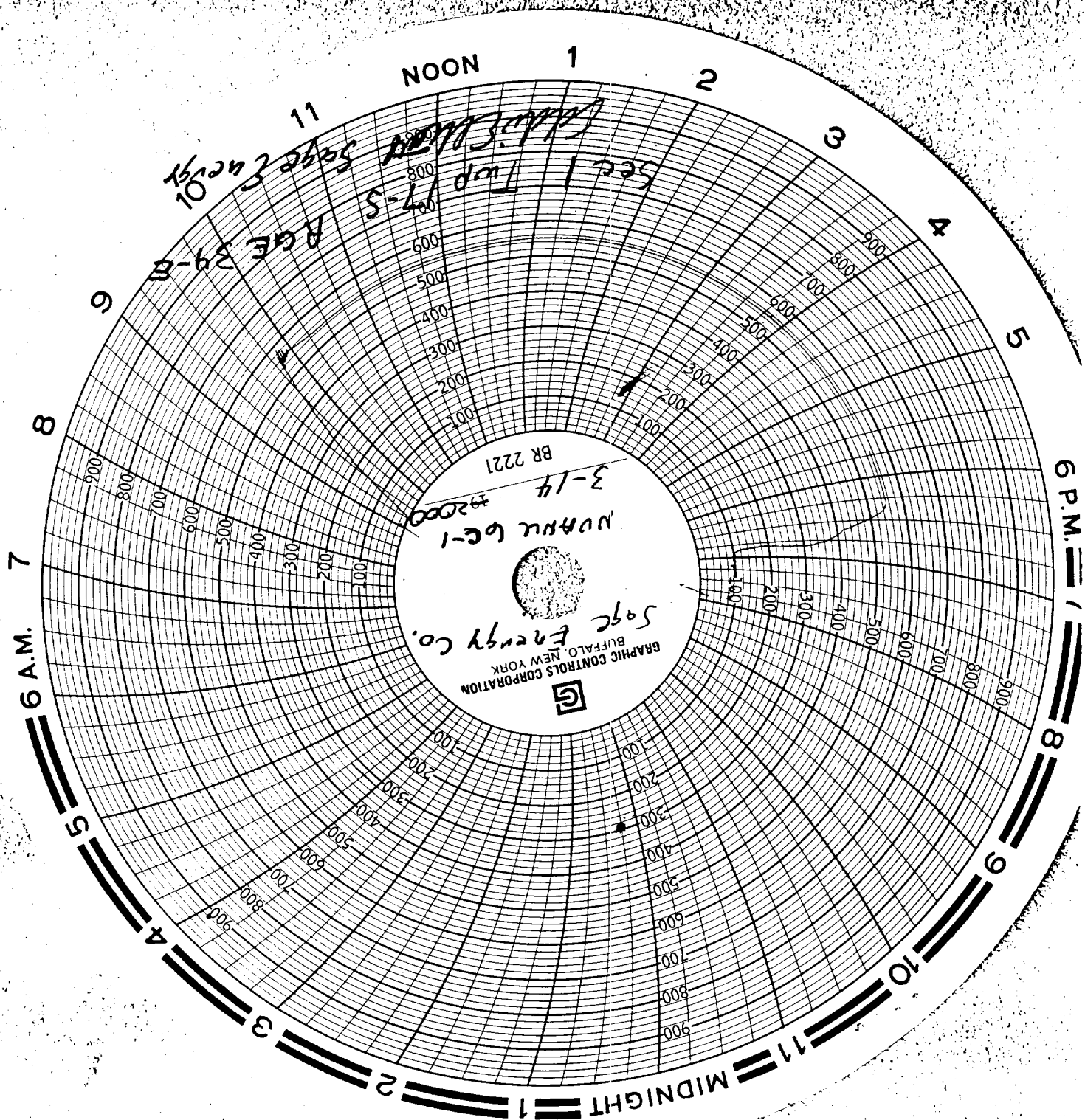
3/13/00 RIH WITH REBUILT PACKER AND 265 JOINTS OF TUBING AND TWO TUBING SUBS, CIRCULATE WITH 2% KCL WITH PACKER FLUID. SET PACKER AND FLANGE UP WELL. START INJECTION. RIG DOWN.

3/14/2000

TEST CASING WITH KILL TRUCK, TEST WITNESSED BY NMOCD

TUBING STRING AS FOLLOWS:

1	2-3/8" API SEATING NIPPLE	1.10
1	2-3/8" X 4-1/2" LOK-SET PACKER	3.36
265	JOINTS 2-3/8" J-55 8-RD EUE TUBING	8,605.57
2	2-3/8" J-55 SUBS	15.16
	SUB TOTAL	8,625.19
	SET BELOW 15' KB	12.00
	PAKER SET AT	8,637.19



SAGE ENERGY COMPANY

NVANU 6C-1
2/13/00

KEY ENERGY SERVICES

MIRU UNIT. DROP STANDING VALVE AND PRESURE TEST TUBING. FISH STANDING VALVE. POOH WITH PACKER AND TUBING. SWI AND SD

3/14/2000

RIH WITH REBUILT 5-1/2" LOC-SET PACKER AND TUBING AND CIRCULATE WELL WITH 2% KCL WITH PACKER FLUID. FLANGE UP WELL AND TEST (SEE ATTACHED CHART) NMOCD WITNESSED THE TEST. TUBING RUN AS FOLLOWS:

1	2-3/8" API SEATING NIPPLE	1.10
1	2-3/8" X 5-1/2" LOC-SET PACKER	3.50
280	JOINTS OF 2-3/8" J-55 8-RD EUE TUBING	8,686.85
2	2-3/8" J-55 8-RD EUE TUBING SUBS	24.13
	SUB TOTAL	8,715.58
	SET BELOW KB	10.00
	PACKER SET AT	8,725.58

EDDIE ELLIOTT