

UNITED STATES
DEPARTMENT OF THE INTERIOR
GEOLOGICAL SURVEY

APPLICATION FOR PERMIT TO DRILL, DEEPEN, OR PLUG BACK

1a. TYPE OF WORK

DRILL ☒DEEPEN ☐PLUG BACK ☐

b. TYPE OF WELL

OIL
WELL ☒GAS
WELL ☐

OTHER

SINGLE
ZONE ☒MULTIPLE
ZONE ☐

2. NAME OF OPERATOR

Exxon Corporation

3. ADDRESS OF OPERATOR

P. O. Box 1600, Midland, Texas 79701

4. LOCATION OF WELL (Report location clearly and in accordance with any State requirements.)*

At surface

990' FSL & 1,650' FEL

At proposed prod. zone

Same

14. DISTANCE IN MILES AND DIRECTION FROM NEAREST TOWN OR POST OFFICE*

2 miles West of Hobbs, New Mexico

10. DISTANCE FROM PROPOSED*

LOCATION TO NEAREST
PROPERTY OR LEASE LINE, FT.
(Also to nearest drlg. unit line, if any)

990'

330'

16. NO. OF ACRES IN LEASE

300

17. NO. OF ACRES ASSIGNED
TO THIS WELL

40

18. DISTANCE FROM PROPOSED LOCATION*

TO NEAREST WELL, DRILLING, COMPLETED,
OR APPLIED FOR, ON THIS LEASE, FT.

859.1'

19. PROPOSED DEPTH

4300'

20. ROTARY OR CABLE TOOLS

Rotary

21. ELEVATIONS (Show whether DF, RT, GR, etc.)

Later

22. APPROX. DATE WORK WILL START*

February 1, 1974

23.

PROPOSED CASING AND CEMENTING PROGRAM

SIZE OF HOLE	SIZE OF CASING	WEIGHT PER FOOT	SETTING DEPTH	QUANTITY OF CEMENT
12-1/4"	9-5/8"	36 & 40# (1)	1,500'	* 430 sacks CIRCLATE
7-7/8"	5-1/2"	15.7 & 17.0 (2)	4,300'	** 140 sacks

(1) Grade H-40; J-55 & N-80 - used.

(2) Grade J-55 - new and used.

* Set surface casing through the top of the Rustler formation and cement to surface.

** Cement back to ~~protect the San Andres at~~ approximately ~~3,500'~~ 2600'.
HOWCO method of cementing to be used.

Mud Program: 0 - 1,500' Spud Mud
 1,500 - 4,000' Brine Water 10#/Gal., 10.5 Ph.
 4,000 - 4,300' Phg. Gel, 10#/Gal.

See "Development Plan for Surface Use", "Blowout Preventer Equipment" and "Rig Layout" attached. The maximum expected pressure is 1,850#.

NOTE: Well No. 8 is completed in the same Hobbs-Grayburg San Andres in the same 40 acre unit as Well No. 36 and will either be plugged, shut-in, or share the allowable.
IN ABOVE SPACE DESCRIBE PROPOSED PROGRAM: If proposal is to deepen or plug back, give data on present productive zone and proposed new productive zone. If proposal is to drill or deepen directionally, give pertinent data on subsurface locations and measured and true vertical depths. Give blowout preventer program, if any.

24.

SIGNED

A. L. Clemmer
D. L. Clemmer

TITLE

Proration Specialist

DATE

1-11-74

(This space for Federal or State office use)

PERMIT NO.

APPROVAL DATE

APPROVED BY

TITLE

CONDITIONS OF APPROVAL, IF ANY:

*See Instructions On Reverse Side

Exxon Lse. No. 153624

NEW MEXICO OIL CONSERVATION COMMISSION

Form C-102
Supersedes C-128
Effective 1-1-65State Lse. No. LC- 032233

WELL LOCATION AND ACREAGE DEDICATION PL

Federal Lse. No. _____

All distances must be from the outer boundaries of the Section.

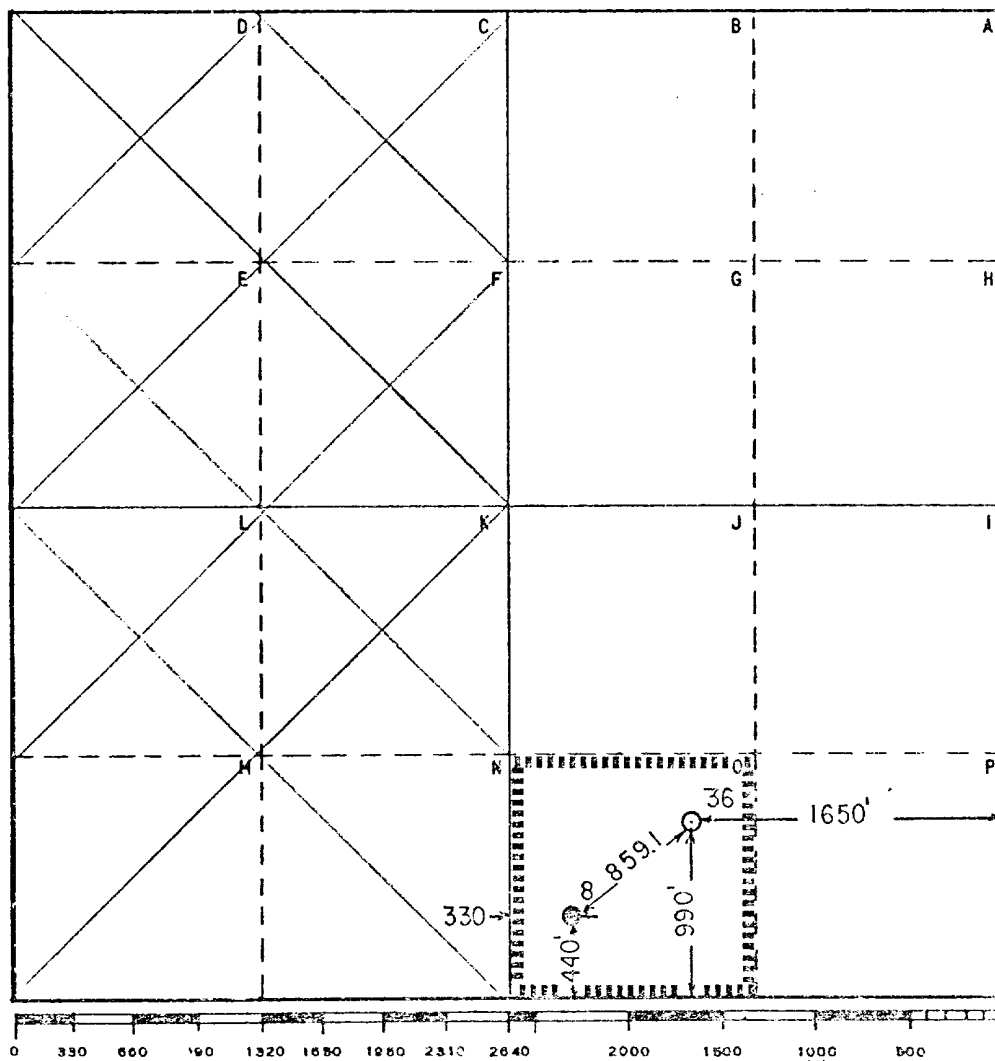
Operator Exxon Corporation			Lease Bowers "A" Federal		Well No. 36
Unit Letter "O"	Section 30	Township 18-S	Range 38- E	County Let	
Actual Footage Location of Well: 990 feet from the South line and 1650 feet from the East line					
Ground Level Elev.:	Producing Formation Grayburg San Andres		Pool Hobbs		Dedicated Acreage: 40 Acres

1. Outline the acreage dedicated to the subject well by colored pencil or hachure marks on the plat below.
2. If more than one lease is dedicated to the well, outline each and identify the ownership thereof (both as to working interest and royalty).
3. If more than one lease of different ownership is dedicated to the well, have the interests of all owners been consolidated by communitization, unitization, force-pooling, etc?

☐ Yes ☐ No If answer is "yes," type of consolidation _____

If answer is "no," list the owners and tract descriptions which have actually been consolidated. (Use reverse side of this form if necessary.) _____

No allowable will be assigned to the well until all interests have been consolidated (by communitization, unitization, forced-pooling, or otherwise) or until a non-standard unit, eliminating such interests, has been approved by the Commission.



CERTIFICATION

I hereby certify that the information contained herein is true and complete to the best of my knowledge and belief.

Name A. K. Clemmer
Position Peroration Specialist
Company Exxon Corporation
Box 1600 Midland, Texas
Date 1-10-74

I hereby certify that the well location shown on this plat was plotted from field notes of actual surveys made by me or under my supervision, and that the same is true and correct to the best of my knowledge and belief.

Date Surveyed 1-7-74
Registered Professional Engineer and/or Land Surveyor
A. S. Westergaard
Certificate No. 1382

2 Miles WEST of HOBBS, New Mexico

G.E. Sec. File No. A-6

DEVELOPMENT PLAN FOR SURFACE USE ON BOWERS "A"
FEDERAL WELL NO. 36

Attached is a segment of a map in Lea County, New Mexico showing the location of the proposed development well in the Hobbs-Grayburg San Andres Pool. Also attached are the following listed items as requested by the U.S.G.S.

1. Existing roads. (See area map)
2. Planned access to the location. (See area map - approx. 50' of 12' wide 6" compacted road.)
3. Offsetting Pool wells. (See Plat No. WB-1475)
4. Lateral roads to other wells.
5. Location of tank battery and flow line for new Well No. 36.
6. Brine water will be hauled in from an off lease source, any fresh water needed is available on the lease.
7. The drilling contractor will be required to comply with OSHA requirements.
8. No camps are involved.
9. No airstrips are involved.
10. A sketch of the location layout is attached showing the position of the rig, pipe rack and reserve pit, as well as the size of the location.
11. The location will be restored to the satisfaction of the Bureau of Land Management.
12. The topography is flat with sparse mesquite vegetation. The proposed well is surrounded by several producing wells.
13. API Series 900 Blowout Prevention Equipment will be used with 2000 psi working pressure, tested according to industry standards. (See Equip. Disc. Attached.)

BLOWOUT PREVENTER SPECIFICATION
EQUIPMENT DESCRIPTION

TYPE II-C

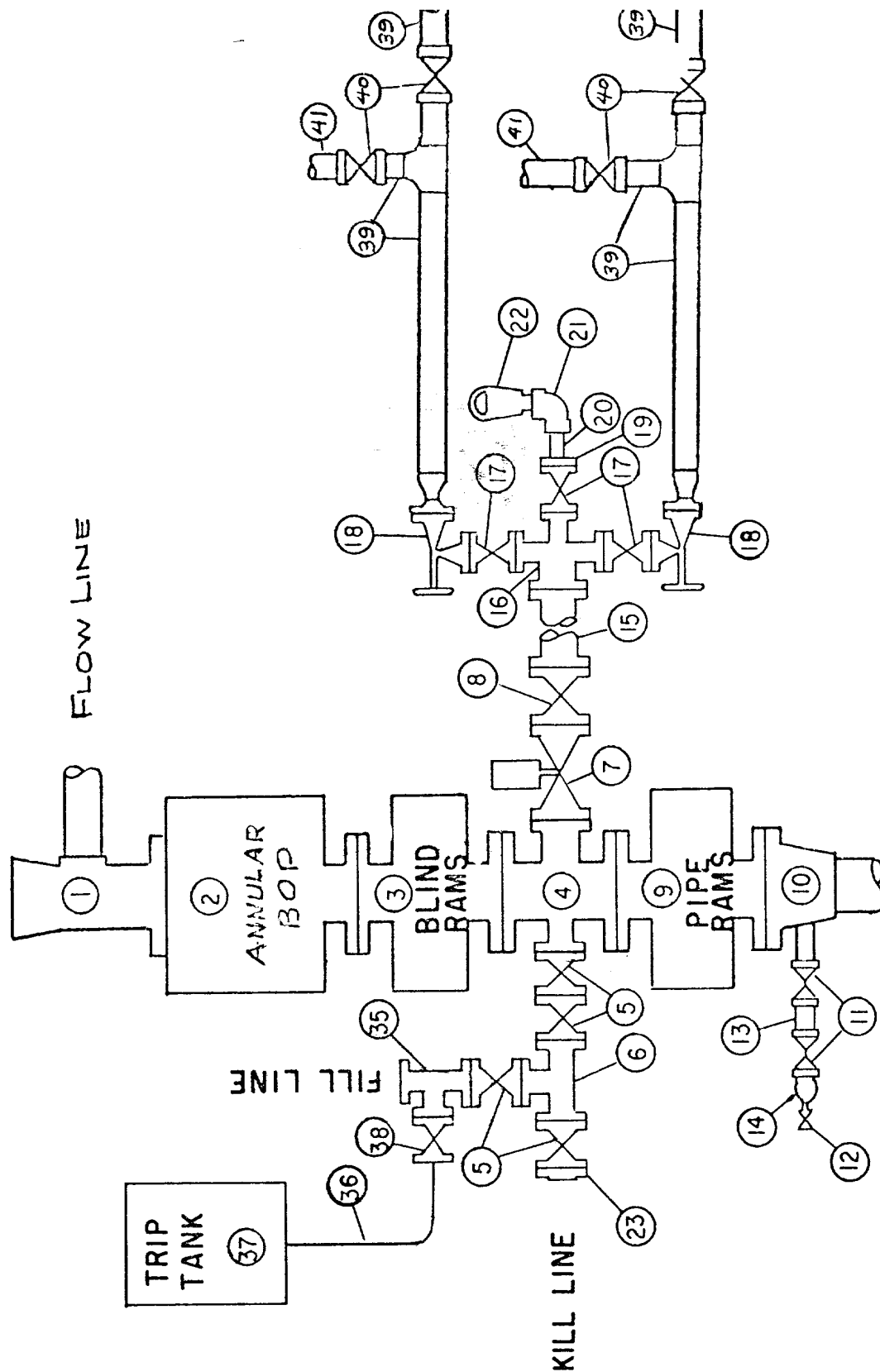
All equipment should be at least 2000 psi WP or higher unless otherwise specified.

1. Bell nipple.
2. Hydril or Shaffer bag type preventer.
3. Ram type pressure operated blowout preventer with blind rams.
4. Flanged spool with one 4-inch and one 2-inch (minimum) outlet.
5. 2-inch (minimum) flanged plug or gate valve.
6. 2-inch by 2-inch by 2-inch (minimum) flanged tee.
7. 4-inch pressure operated gate valve.
8. 4-inch flanged gate or plug valve.
9. Ram type pressure operated blowout preventer with pipe rams.
10. Flanged type casing head with one side outlet (furnished by Exxon).
11. 2-inch threaded (or flanged) plug or gate valve (furnished by Exxon).
Flanged on 5000# WP, threaded on 3000# WP or less.
12. Needle valve (furnished by Exxon).
13. 2-inch nipple (furnished by Exxon).
14. Tapped bull plug (furnished by Exxon).
15. 4-inch flanged spacer spool.
16. 4-inch by 2-inch by 2-inch by 2-inch flanged cross.
17. 2-inch flanged plug or gate valve.
18. 2-inch flanged adjustable choke.
19. 2-inch threaded flange.
20. 2-inch XXH nipple.
21. 2-inch forged steel 90° Ell.
22. Cameron (or equal.) threaded pressure gage.
23. Threaded flange.
35. 2-inch flanged tee.
36. 3-inch (minimum) hose. (Furnished by Exxon).
37. Trip tank. (Furnished by Exxon).
38. 2-inch flanged plug or gate valve.
39. 2-1/2-inch pipe, 300' to pit, anchored.
40. 2-1/2-inch SE valve.
41. 2-1/2-inch line to steel pit or separator.

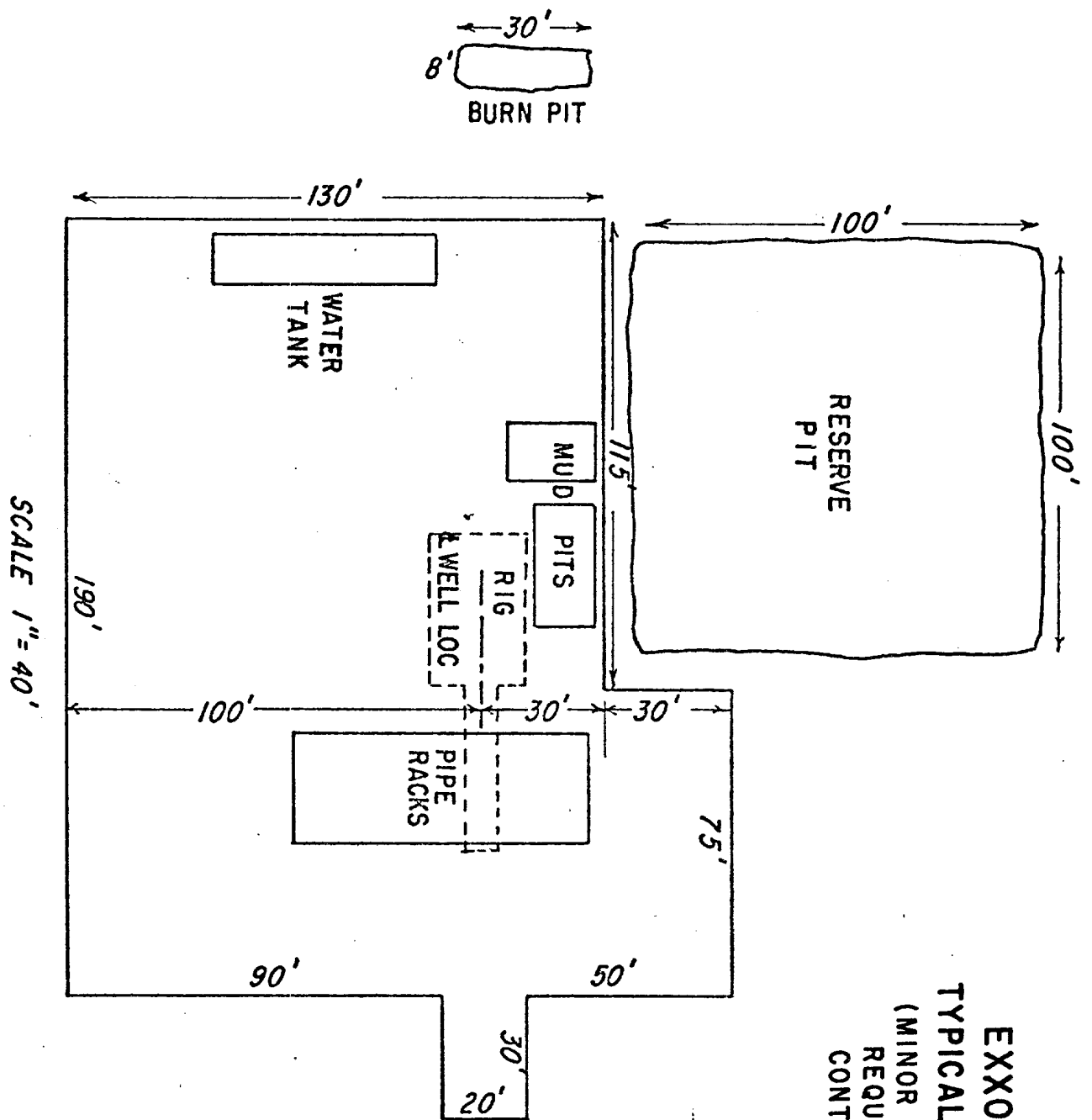
NOTES:

1. Items 3, 4 and 9 may be replaced with double ram type preventer with side outlets between the rams.
2. The two valves next to the stack on the fill and kill line to be closed unless drill string is being pulled.
3. Kill line is for emergency use only. This connection shall not be used for filling.
4. Replacement pipe rams and blind rams shall be on location at all times.
5. Only type U, LWS and QRC ram type preventers with secondary seals are acceptable for 5000 psi WP and higher BOP stacks.
6. Type E ram-type BOP's with factory modified side outlets may be used on 3000 psi or lower WP BOP stacks.

MIDLAND DRILLING ORGANIZATION BLOWOUT PREVENTER SPECIFICATION TYPE II - C

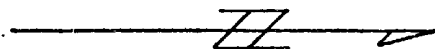


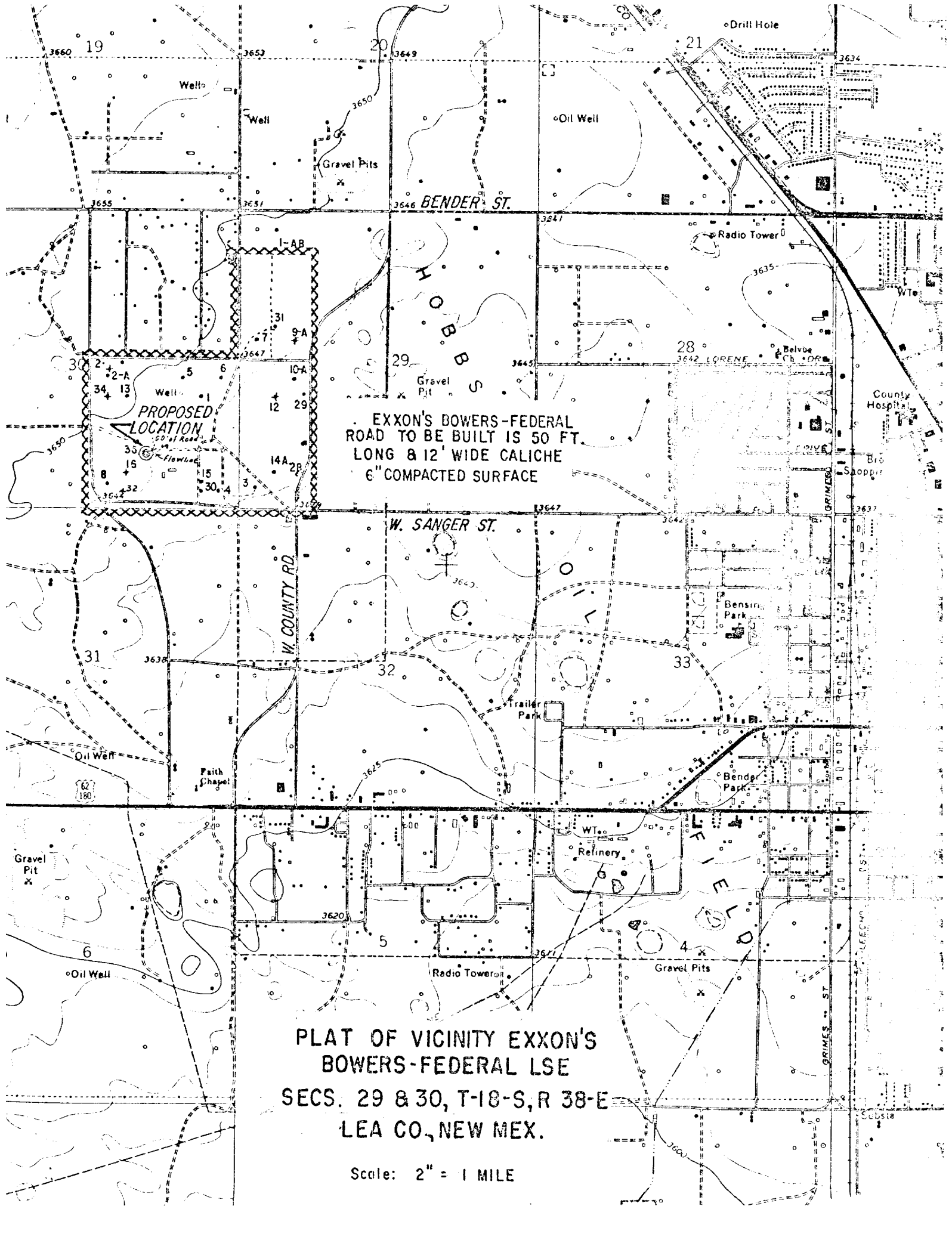
9/15/73



SCALE 1" = 40'

EXXON CORPORATION
TYPICAL LOCATION LAYOUT
(MINOR ADJUSTMENTS MAY BE
REQUIRED BY TERRAIN OR
CONTRACTORS RIG SIZE)





EXXON'S BOWERS-FEDERAL
ROAD TO BE BUILT IS 50 FT.
LONG & 12' WIDE CALICHE
6" COMPACTED SURFACE

PLAT OF VICINITY EXXON'S
BOWERS-FEDERAL LSE
SECS. 29 & 30, T-18-S, R 38-E
LEA CO., NEW MEX.

Scale: 2" = 1 MILE

Shell

Shell

19 20
30 29

Amerada
"B"

Getty

T-18-S, R-38-E

Amerada

H. D. McKinley

Marathon

Humble
153624
"A"

Continental

300 Ac. Lease

State

Bowers "A" Federal

State

Skelly

Cities Service

31 32

Gulf

Clara Fowler

W. D. Grimes

-LEGEND-

- Bowers Seven Rivers
- △ Hobbs Blinbry
- ⊙ Hobbs San Andres Grayburg
- ⊠ Hobbs San Andres Grayburg - Blinbry Dual
- ⊙ Hobbs Drinkard - Blinbry Dual



THIS APPLICATION FOR WELL NO. _____

BOWERS "A" FEDERAL - LSE. # 153624
SE/4 SEC. 30 & S-140 AC. OF W/4 SEC. 29
T-18-S, R-38-E LEA CO., N.M.

HUMBLE OIL & REFINING COMPANY
SOUTHWEST REGION
PRODUCTION DEPARTMENT
MIDLAND, TEXAS

DRAWN W. M. B

ENGR SECTION

SCALE 1" = 500'

JOB NO.

FILE NO.

CHECKED

APPROVED

DATE

5-14-69

W-B 1475

See A 563 For Core Test 17-28

1 MILE WEST OF HORRIS

REV. 1/16/72