

UNITED STATES
DEPARTMENT OF THE INTERIOR
GEOLOGICAL SURVEY

APPLICATION FOR PERMIT TO DRILL, DEEPEN, OR PLUG BACK

1a. TYPE OF WORK

DRILL ☒DEEPEN ☐PLUG BACK ☐

b. TYPE OF WELL

OIL
WELL ☒GAS
WELL ☐

OTHER

SINGLE
ZONE ☒MULTIPLE
ZONE ☐

2. NAME OF OPERATOR

John H. Hill

3. ADDRESS OF OPERATOR

1411 West Avenue, Suite 100, Austin, Texas 78701

4. LOCATION OF WELL (Report location clearly and in accordance with any State requirements.*)

At surface

1980' from South line, 1980' from East line

At proposed prod. zone

14. DISTANCE IN MILES AND DIRECTION FROM NEAREST TOWN OR POST OFFICE*

9 miles south of Maljamar

15. DISTANCE FROM PROPOSED*

LOCATION TO NEAREST
PROPERTY OR LEASE LINE, FT.
(Also to nearest drlg. unit line, if any)

660

16. NO. OF ACRES IN LEASE

160

17. NO. OF ACRES ASSIGNED
TO THIS WELL

40

18. DISTANCE FROM PROPOSED LOCATION*
TO NEAREST WELL, DRILLING, COMPLETED,
OR APPLIED FOR, ON THIS LEASE, FT.

-

19. PROPOSED DEPTH

4300

20. ROTARY OR CABLE TOOLS

Rotary

21. ELEVATIONS (Show whether DF, RT, GR, etc.)

3777.7 Gr.

22. APPROX. DATE WORK WILL START*

2-1-74

23.

PROPOSED CASING AND CEMENTING PROGRAM

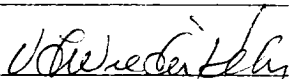
SIZE OF HOLE	SIZE OF CASING	WEIGHT PER FOOT	SETTING DEPTH	QUANTITY OF CEMENT
11	8-5/8	24	300'	200 sks (circulate)
7-7/8	4-1/2	9.5	4300'	300 sks

Blow out preventer will be used below surface casing.

IN ABOVE SPACE DESCRIBE PROPOSED PROGRAM: If proposal is to deepen or plug back, give data on present productive zone and proposed new productive zone. If proposal is to drill or deepen directionally, give pertinent data on subsurface locations and measured and true vertical depths. Give blowout preventer program, if any.

24.

SIGNED



TITLE

Superintendent

DATE

January 28, 1974

(This space for Federal or State office use)

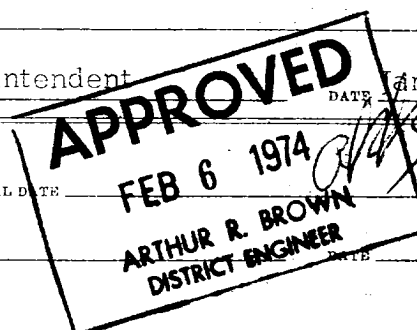
PERMIT NO.

APPROVAL DATE

APPROVED BY

TITLE

CONDITIONS OF APPROVAL, IF ANY:



**NEW MEXICO OIL CONSERVATION COMMISSION
WELL LOCATION AND ACREAGE DEDICATION PLAT**

Form C-102
Supersedes C-128
Effective 1-1-65

All distances must be from the outer boundaries of the Section

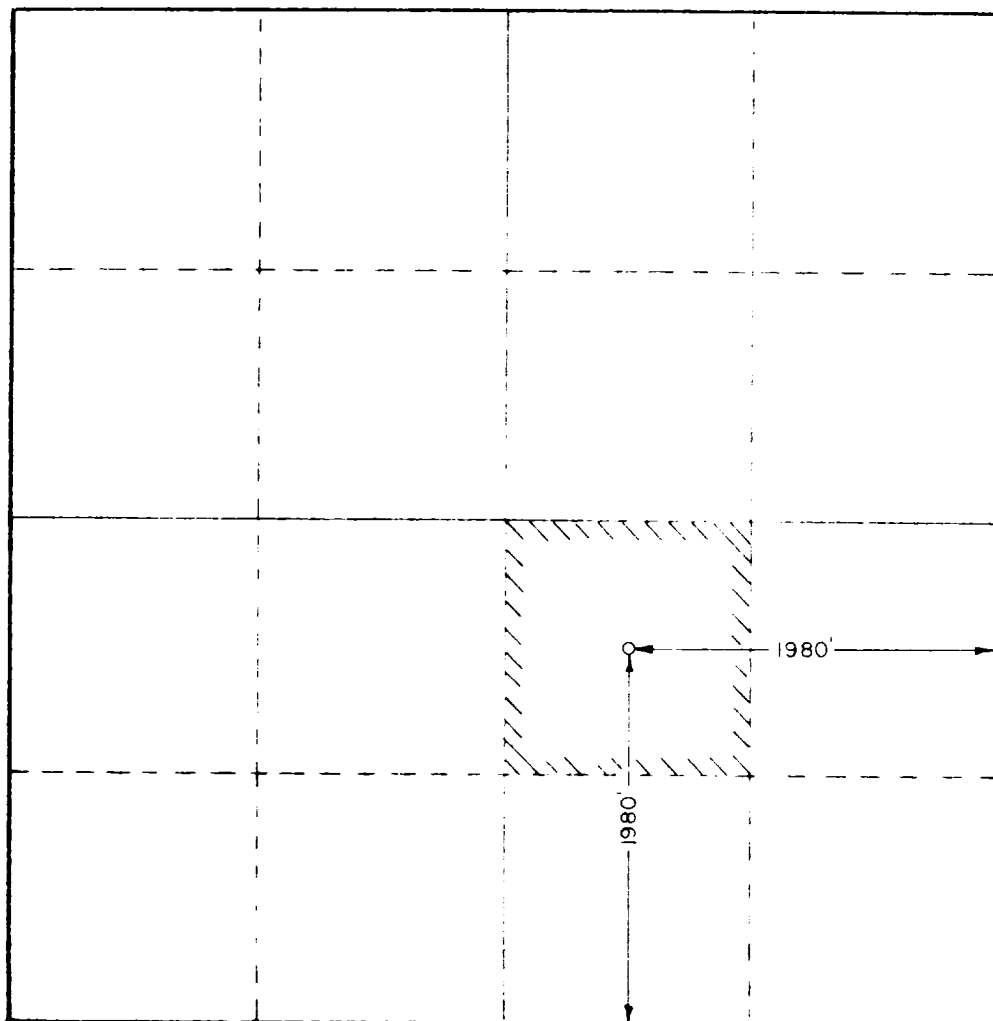
Operator JOHN H. HILL			Lease EDITH FEDERAL		Well No. 2
Unit Letter J	Section 23	Township 18 SOUTH	Range 32 EAST	County LEA	
Actual Entrance Location of Well: <div style="display: flex; justify-content: space-between;"> 1980 feet from the SOUTH line and 1980 feet from the EAST line </div>					
Ground Level Elev. 3777.7	Producing Formation QUEEN		Pool QUERECHO PLAINS QUEEN	Dedicated Acreage: NW 1/4 SE 1/4 40 Acres	

1. Outline the acreage dedicated to the subject well by colored pencil or hatchure marks on the plat below.
2. If more than one lease is dedicated to the well, outline each and identify the ownership thereof (both as to working interest and royalty).
3. If more than one lease of different ownership is dedicated to the well, have the interests of all owners been consolidated by communitization, unitization, force-pooling, etc?

☐ Yes ☐ No If answer is "yes," type of consolidation _____

If answer is "no," list the owners and tract descriptions which have actually been consolidated. (Use reverse side of this form if necessary.) _____

No allowable will be assigned to the well until all interests have been consolidated (by communitization, unitization, forced-pooling, or otherwise) or until a non-standard unit, eliminating such interests, has been approved by the Commission.



CERTIFICATION

I hereby certify that the information contained herein is true and complete to the best of my knowledge and belief

V. L. Wiederkehr

Name
V. L. Wiederkehr

Position
Superintendent

Company
John H. Hill

Date
January 28, 1974

I hereby certify that the well location shown on this plat was plotted from field notes of actual surveys made by me or under my supervision and that the same is true and correct to the best of my knowledge and belief

Date Surveyed
JANUARY 24, 1974

Registered Professional Engineer
and/or Land Surveyor

John W. West
Certificate No. **676**

RECEIVED

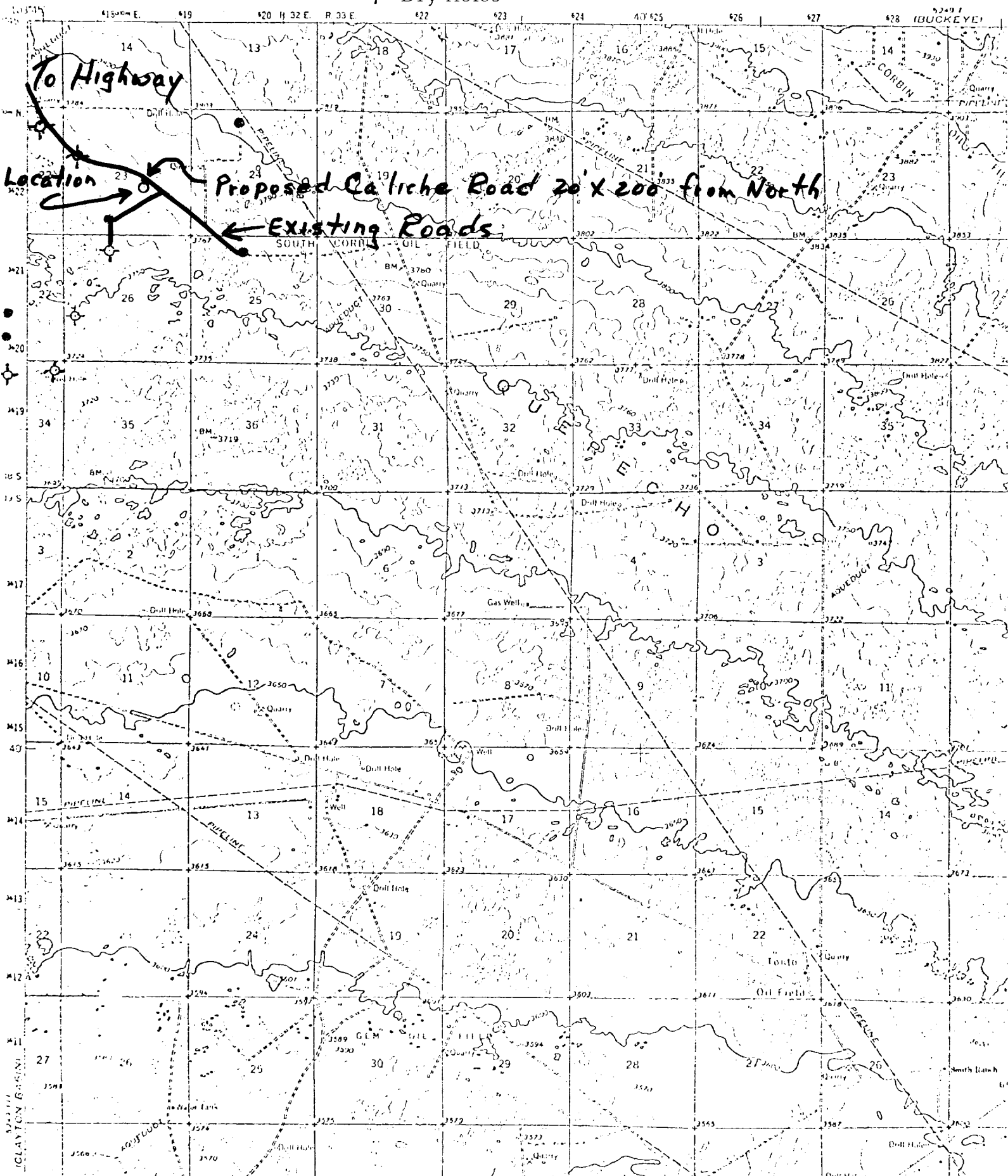
FEB 1 1964

THE CONSTITUTIONAL COMMISSION
HOUSTON, TEXAS

UNITED STATES
DEPARTMENT OF THE INTERIOR
GEOLOGICAL SURVEY

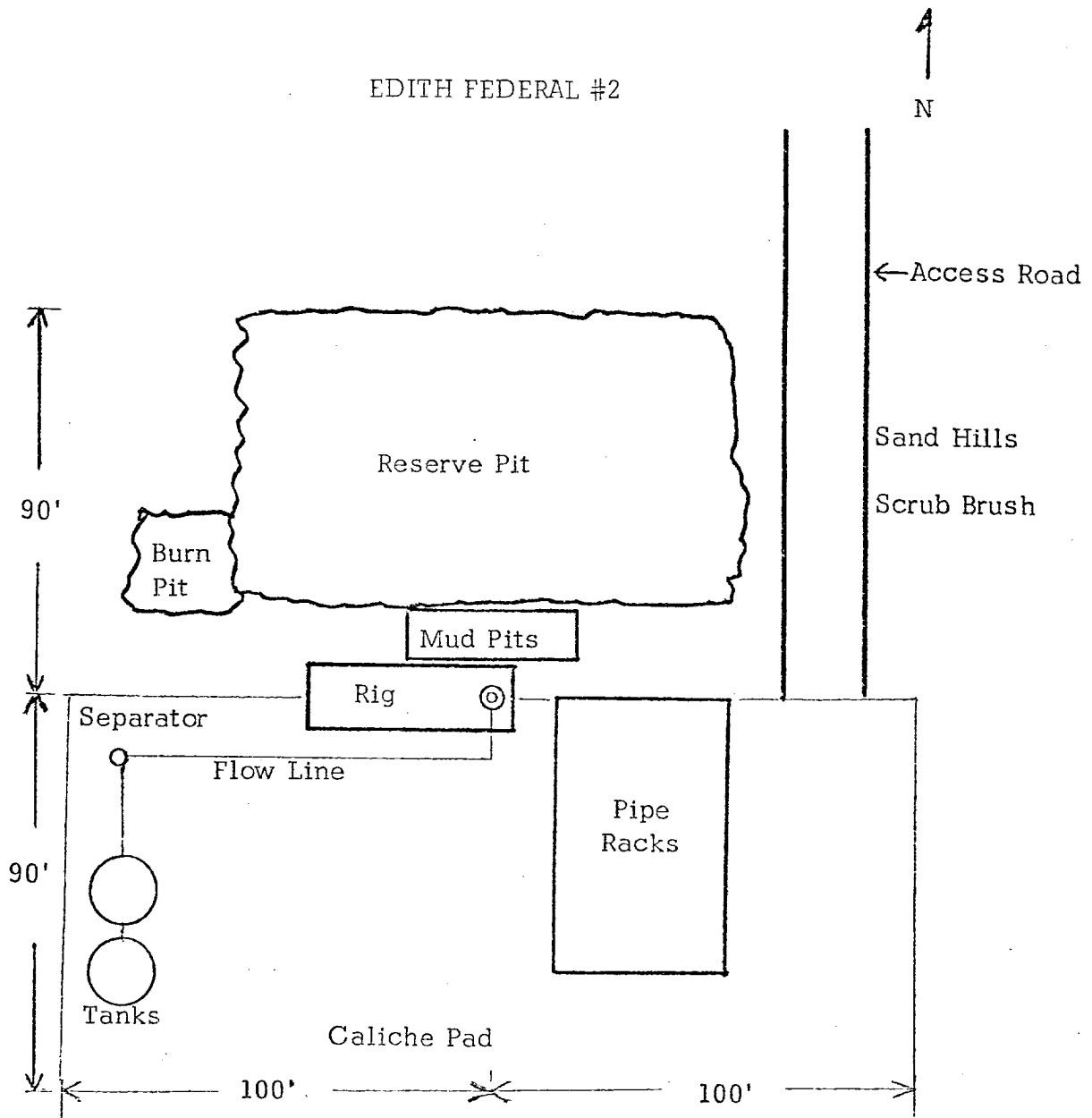
JOHN H. HILL - EDITH FEDERAL # 2

- Wells
- ⊕ Dry Holes



JOHN H. HILL
1411 WEST AVENUE, SUITE 100
AUSTIN, TEXAS 78701
512-472-7261

EDITH FEDERAL #2



1" = 40'

JOHN H. HILL
1411 WEST AVENUE, SUITE 100
AUSTIN, TEXAS 78701

512-472-7261

EDITH FEDERAL 2

Development Plan For Surface Use

6. Water for drilling will be hauled.
7. Cuttings and trash will be buried and/or burned.
11. Topsoil will be pushed aside and used to fill and level pits after drilling operations are concluded.