

NO. OF COPIES RECEIVED	
DISTRIBUTION	
SANTA FE	
FILE	
U.S.G.S.	
LAND OFFICE	
OPERATOR	

NEW MEXICO OIL CONSERVATION COMMISSION

Form C-101
Revised 1-1-65

5A. Indicate Type of Lease STATE <input checked="" type="checkbox"/> FEE <input type="checkbox"/>
5. State Oil & Gas Lease No. LG-605

APPLICATION FOR PERMIT TO DRILL, DEEPEN, OR PLUG BACK

1a. Type of Work b. Type of Well OIL WELL <input checked="" type="checkbox"/> GAS WELL <input type="checkbox"/> OTHER <input type="checkbox"/> DRILL <input checked="" type="checkbox"/> DEEPEN <input type="checkbox"/> PLUG BACK <input type="checkbox"/> SINGLE ZONE <input checked="" type="checkbox"/> MULTIPLE ZONE <input type="checkbox"/>		7. Unit Agreement Name ---
2. Name of Operator CleveRock Energy Corporation		8. Farm or Lease Name CleveRock-Pedco State
3. Address of Operator 9720-B Candelaria, N.E., Albuquerque, N.M. 87112		9. Well No. 1
4. Location of Well UNIT LETTER I LOCATED 660 FEET FROM THE East LINE AND 1980 FEET FROM THE South LINE OF SEC. 16 TWP. 19S RGE. 32E NMPM		10. Field and Section East Lusk-Wolfcamp
19. Proposed Depth 11,100'		19A. Formation Wolfcamp
20. Rotary or C.T. Rotary		21. Elevations (Show whether DF, RT, etc.) 3617 GL
21A. Kind & Status Plug. Bond Single-Active		21B. Drilling Contractor MGF
22. Approx. Date Work will start August 1, 1974		

PROPOSED CASING AND CEMENT PROGRAM

SIZE OF HOLE	SIZE OF CASING	WEIGHT PER FOOT	SETTING DEPTH	SACKS OF CEMENT	EST. TOP
16"	12-3/4"	41.51	350' ±	225	Circ.
11"	8-5/8"	24.5, 32.5	4150' ±	280	2550
7-7/8"	5-1/2"	17.5	11,100' ±	275	9800

Set 12-3/4" casing at approximately 350', circulate cement to surface. Test BOP and surface casing to 500' for 30" before drilling out. WOC time 8 hours.

Drill 11" hole to approximately 4150', set and cement 8-5/8" intermediate casing at approximately 4150'. Test BOP and 8-5/8" casing to 1000' for 30" before drilling out. WOC time 12 hours.

Drill 7-7/8" hole to approximately 11,100', testing all significant shows of oil or gas. Set 5-1/2" casing at approximately 11,100'.

Complete by jet perforating indicated Wolfcamp pay intervals and acidizing as need is indicated. A double-ram 900-series BOP will be used while drilling below the surface casing.

In the event the well is dry, necessary approval will be obtained from the Commission before Plugging and abandonment.

IN ABOVE SPACE DESCRIBE PROPOSED PROGRAM: IF PROPOSAL IS TO DEEPEN OR PLUG BACK, GIVE DATA ON PRESENT PRODUCTIVE ZONE AND PROPOSED NEW PRODUCTIVE ZONE. GIVE BLOWOUT PREVENTER PROGRAM, IF ANY.

I hereby certify that the information above is true and complete to the best of my knowledge and belief.

Signed Charles V. Sanders Title Agent Date 6/19/74
(This space for State Use)

APPROVED BY [Signature] TITLE SUPERVISOR DATE 6/19/74
CONDITIONS OF APPROVAL, IF ANY:

RECEIVED

JUN 24 1974

OIL CONSERVATION COMM.
HOBBS, N. M.

NEW MEXICO OIL CONSERVATION COMMISSION
WELL LOCATION AND ACREAGE DEDICATION PL

Form C-102
Supersedes C-128
Effective 1-1-65

All distances must be from the outer boundaries of the Section

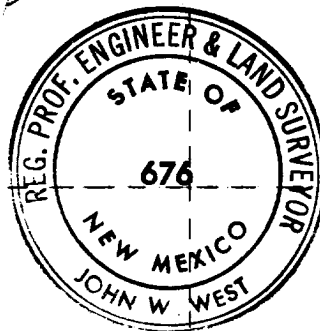
Operator CLEVEROCK ENERGY CORPORATION			Lease CLEVEROCK-PEDCO STATE		Well No. 1
Unit Letter I	Section 16	Township 19 SOUTH	Range 32 EAST	County LEA	
Actual Footage Location of Well: 660 feet from the EAST line and 1980 feet from the SOUTH line					
Ground Level Elev. 3616.6	Producing Formation WOLFCAMP		Pool EAST LUSK WOLFCAMP		Dedicated Acreage: SE 1/4 160 Acres

1. Outline the acreage dedicated to the subject well by colored pencil or hachure marks on the plat below.
2. If more than one lease is dedicated to the well, outline each and identify the ownership thereof (both as to working interest and royalty).
3. If more than one lease of different ownership is dedicated to the well, have the interests of all owners been consolidated by communitization, unitization, force-pooling, etc?

☐ Yes ☐ No If answer is "yes," type of consolidation NA

If answer is "no," list the owners and tract descriptions which have actually been consolidated. (Use reverse side of this form if necessary.) NA

No allowable will be assigned to the well until all interests have been consolidated (by communitization, unitization, forced-pooling, or otherwise) or until a non-standard unit, eliminating such interests, has been approved by the Commission.



CERTIFICATION

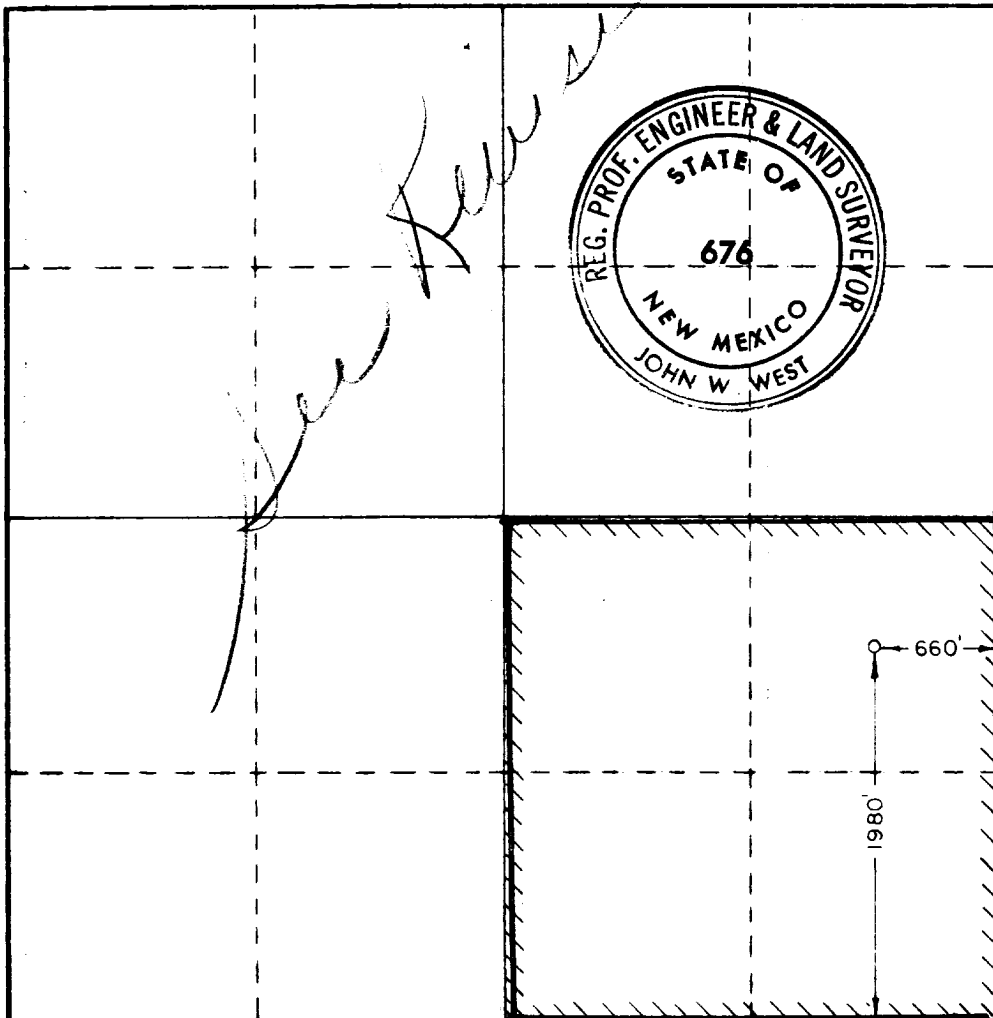
I hereby certify that the information contained herein is true and complete to the best of my knowledge and belief.

Name
Charles W. Sanders
Position
Agent
Company
CleverRock Energy Corporation
Date
June 19, 1974

I hereby certify that the well location shown on this plat was plotted from field notes of actual surveys made by me or under my supervision, and that the same is true and correct to the best of my knowledge and belief.

Date Surveyed
JUNE 8, 1974
Registered Professional Engineer and/or Land Surveyor

John W. West
Certificate No. **676**



0 320 660 1000 1320 1660 1980 2300 2640 2960 3280 3600

173

RECEIVED

JUN 21 1967

OIL CONSERVATION COMM.
HOBBS, N. M.