

UNITED STATES
DEPARTMENT OF THE INTERIOR
BUREAU OF LAND MANAGEMENT

SUBMIT IN TRIPPLICATE*
(Other instructions on re-
verse side)

Budget Bureau No. 1004-0-35
Expires August 31, 1985

SUNDRY NOTICES AND REPORTS ON WELLS

(Do not use this form for proposals to drill or to deepen or plug back to a different reservoir.
Use "APPLICATION FOR PERMIT—" for such proposals.)

OIL WELL ☒ GAS WELL ☐ OTHER ☐

2. NAME OF OPERATOR

Phillips Petroleum Company

3. ADDRESS OF OPERATOR

Room 401, 4001 Penbrook St., Odessa, Texas 79762

4. LOCATION OF WELL (Report location clearly and in accordance with any State requirements.*

See also space 17 below.)
At surface

Unit G, 1660' FNL & 2300' FEL

14. PERMIT NO.

30-025-24869

15. ELEVATIONS (Show whether DF, ST, OR, etc.)

3581'GR, 3594'DF

6. LEASE DESIGNATION AND SERIAL NO.

LC-065710-A

6. IF INDIAN, ALLOTTEE OR TRIBE NAME

7. UNIT AGREEMENT NAME

Lusk Deep Unit A

8. FARM OR LEASE NAME

9. WELL NO.

12

10. FIELD AND POOL, OR WILDCAT

Lusk

11. SEC., T., R., M., OR BLK. AND SURVEY OR AREA

Sec 20, T-19-S, R-32-E

12. COUNTY OR PARISH

Lea

13. STATE

New Mexico

16. Check Appropriate Box To Indicate Nature of Notice, Report, or Other Data

NOTICE OF INTENTION TO:

TEST WATER SHUT-OFF

FRACTURE TREAT

SHOOT OR ACIDIZE

REPAIR WELL

(Other)

PULL OR ALTER CASING

MULTIPLE COMPLETE

ABANDON*

CHANGE PLANS

X

SUBSEQUENT REPORT OF:

WATER SHUT-OFF

FRACTURE TREATMENT

SHOOTING OR ACIDIZING

(Other)

REPAIRING WELL

ALTERING CASING

ABANDONMENT*

(NOTE: Report results of multiple completion on Well Completion or Recompletion Report and Log form.)

17. DESCRIBE PROPOSED OR COMPLETED OPERATIONS (Clearly state all pertinent details, and give pertinent dates, including estimated date of starting any proposed work. If well is directionally drilled, give subsurface locations and measured and true vertical depths for all markers and zones pertinent to this work.)*

Recommended procedure to plug and abandoned well:

(Procedure discussed with Bob Pitschke, September 19, 1985)

MI & RU DDU. GIH with 5 1/2" CIBP on 2 7/8" tubing and set same at 8800'. PU and load hole with 9.5 ppg mud laden brine. Test CIBP and casing to 1000 psi. Spot 5 sxs of Class "H" neat cement on CIBP. Displace cement in tubing with 51 bbls of 9.5 ppg mud. Cut and pull casing at free point. GIH w/2 7/8" tubing to 80' below casing cut-off and spot 50 sxs of Class "H" neat cement mixed to 15.6 ppg. Displace cement in tubing with 9.5 ppg mud to 80' above casing cut off. PU to 7100' and spot 70 sxs of Class "H" neat cement from 7100'-6950'. (This step may be eliminated if 5 1/2" casing cut-off is above 7550'). PU to 4535' and spot 55 sxs of Class "C" cement mixed to 14.8 ppg across 8 5/8" casing shoe. PU to 4200' and reverse tubing clean. POOH. Determine 8 5/8" casing free point, cut and pull casing. GIH w/tubing and tag TOC. Plug to be at least 7550' above 8 5/8" casing shoe. PU to 55' below casing cut and spot 80 sx of Class "C" w/2% CaCl₂. PU to ±750' and reverse tubing clean. WOC 3 hrs. Tag TOC. Plug to be at least 50' above casing cut point. PU to 875' and spot 95 sxs Class "C" cement w/2% CaCl₂. PU to ±500' and reverse tubing clean. WOC 3 hrs. Tag TOC. Plug must be at least 50' above 13 3/8" shoe. Spot 35 sxs of Class "C" cement w/2% CaCl₂ from 50' to surface. POOH. LD tbg. Remove wellhead and cut casing 3' below ground level. Weld on steel plate, backfill and clean up location.

SEE REVERSE SIDE

18. I hereby certify that the foregoing is true and correct

SIGNED W. J. Mueller

TITLE Engineering Supervisor,
Reservoir

DATE December 11, 1985

(This space for Federal or State office use)

APPROVED BY _____
CONDITIONS OF APPROVAL, IF ANY:

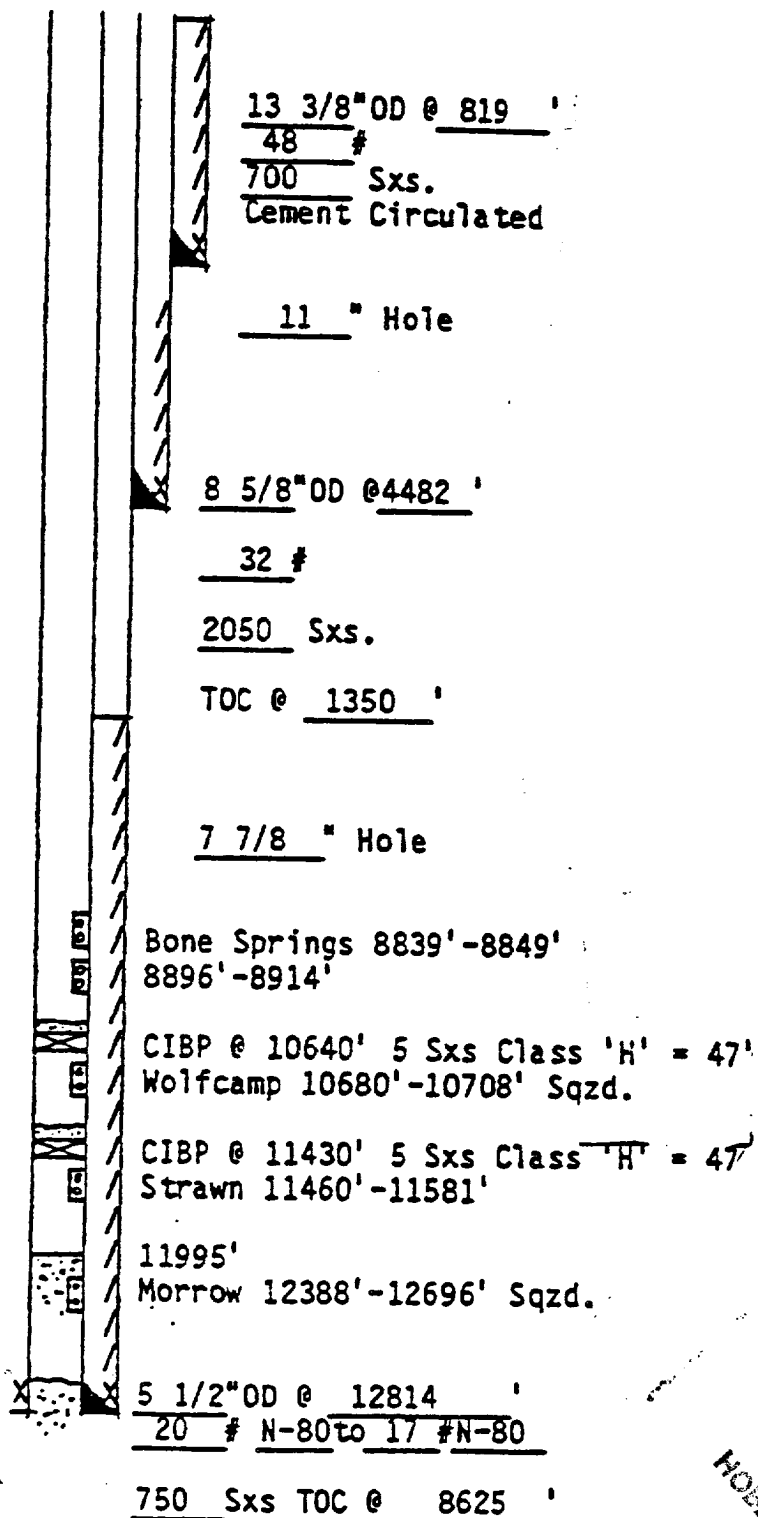
TITLE _____

DATE 12-19-85

LUSK DEEP UNIT A , Well No. 12

SCHEMATIC

RKB @ 3596'
 CHF @
 GL @ 3581'



RECEIVED
 DEC 20 1985
 HOES OFFICE