

NEW MEXICO OIL CONSERVATION COMMISSION
WELL LOCATION AND ACREAGE DEDICATION PLAT

Form 1-124
Superseded 6-12-74
Effective 1-1-75

All distances must be from the outer boundaries of the Section

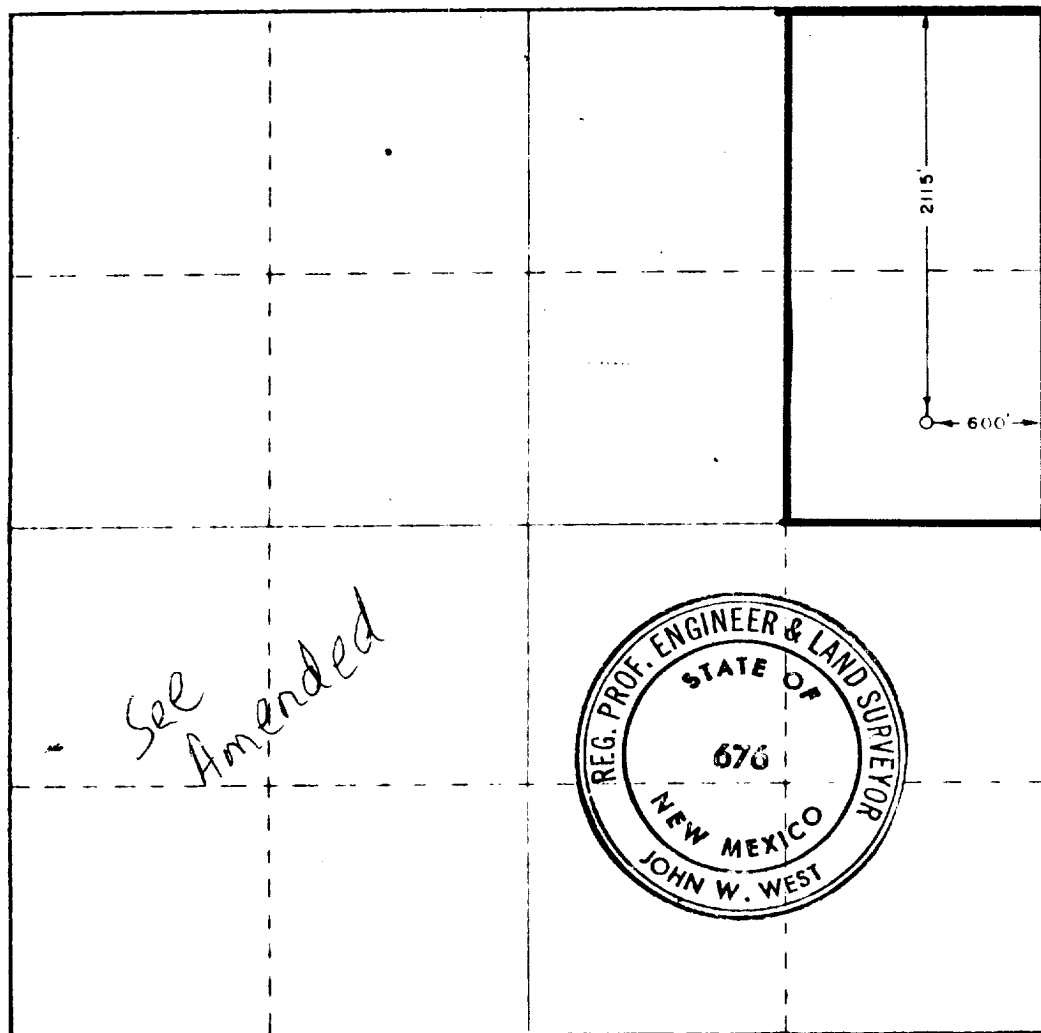
Gulf Oil Corporation		Lessee		W. D. Grimes NCT-B		Well No. 8	
H	33	Township	18 South	Range	38 East	County	
2115		feet from the North		600		feet from the East	
Drinkard		Hobbs Drinkard		80			

- Outline the acreage dedicated to the subject well by colored pencil or hatchure marks on the plat below.
- If more than one lease is dedicated to the well, outline each and identify the ownership thereof (both as to working interest and royalty).
- If more than one lease of different ownership is dedicated to the well, have the interests of all owners been consolidated by communitization, unitization, force pooling, etc?

☐ Yes ☐ No If answer is "yes," type of consolidation _____

If answer is "no," list the owners and tract descriptions which have actually been consolidated. (Use reverse side of this form if necessary.) _____

No allowable will be assigned to the well until all interests have been consolidated (by communitization, unitization, forced-pooling, or otherwise) or until a non-standard unit, eliminating such interests, has been approved by the Commission.



CERTIFICATION

I hereby certify that the information contained herein is true and complete to the best of my knowledge and belief.

C. D. Borland

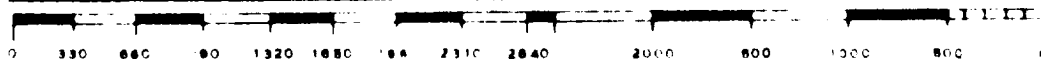
Name
C. D. BORLAND
Position
Area Production Manager
Company
Gulf Oil Corporation

Date
December 16, 1974

I hereby certify that the well location shown on this plat was plotted from field notes of actual surveys made by me or under my supervision, and that the same is true and correct to the best of my knowledge and belief.

Date surveyed
December 11, 1974

Registered Professional Engineer
and Land Surveyor
John W. West
676



113