

NO. OF COPIES RECEIVED	
DISTRIBUTION	
SANTA FE	
FILE	
U.S.G.S.	
LAND OFFICE	
OPERATOR	

NEW MEXICO OIL CONSERVATION COMMISSION

Form C-101
Revised 1-1-65

5A. Indicate Type of Lease	
STATE <input checked="" type="checkbox"/>	FEE <input type="checkbox"/>
5. State Oil & Gas Lease No.	
E-580	

APPLICATION FOR PERMIT TO DRILL, DEEPEN, OR PLUG BACK

1a. Type of Work		7. Unit Agreement Name	
DRILL <input checked="" type="checkbox"/> DEEPEN <input type="checkbox"/> PLUG BACK <input type="checkbox"/>		North Vacuum-Abo Unit	
b. Type of Well		8. Farm or Lease Name	
OIL WELL <input checked="" type="checkbox"/> GAS WELL <input type="checkbox"/> OTHER <input type="checkbox"/>			
2. Name of Operator		9. Well No.	
Mobil Oil Corporation		224	
3. Address of Operator		10. Field and Pool, or Wildcat	
P. O. Box 633, Midland, Texas 79701		North Vacuum-Abo	
4. Location of Well		12. County	
UNIT LETTER B LOCATED 745 FEET FROM THE North LINE		Lea	
AND 1880 FEET FROM THE East LINE OF SEC. 11 TWP. 17-S RGE. 34-E NMPM			
18. Proposed Depth		19A. Formation	
8750'		Abo	
20. Rotary or C.T.		Rotary	
21. Elevations (Show whether DF, RT, etc.)		22. Approx. Date Work will start	
4046.7		As soon as possible	
21A. Kind & Status Plug. Bond		21B. Drilling Contractor	
On File		Unknown	

PROPOSED CASING AND CEMENT PROGRAM

SIZE OF HOLE	SIZE OF CASING	WEIGHT PER FOOT	SETTING DEPTH	SACKS OF CEMENT	EST. TOP
17-1/2"	13-3/8"	48# - H-40	0-250'	Circulate	Surface
12-1/4"	8-5/8"	20# Misco	0-1200'		
		24# LBF -55	1200-2400'	Circulate	Surface
		28# LBF	2400-3140'		
7-7/8"	5-1/2"	15.5# - K-55	0-3000'		
		17# - K-55	3000-8750'	Circulate	Surface

BLOWOUT PREVENTER PROGRAM

Casing String	Equip. Size & API Series	No. & Type	Test Pressure PSI
Surface	8" 600	Dual w/Pipe & Blank Rams	1000

APPROVAL VALID
FOR 90 DAYS UNLESS
DRILLING COMMENCED,

EXPIRES Nov. 19, 1975

IN ABOVE SPACE DESCRIBE PROPOSED PROGRAM: IF PROPOSAL IS TO DEEPEN OR PLUG BACK, GIVE DATA ON PRESENT PRODUCTIVE ZONE AND PROPOSED NEW PRODUCTIVE ZONE. GIVE BLOWOUT PREVENTER PROGRAM, IF ANY.

I hereby certify that the information above is true and complete to the best of my knowledge and belief.

Signature W. B. Simmons, Jr. Title Associate Engineer Date August 11, 1975

(This space for State Use)

APPROVED BY John W. Rangan TITLE Logis DATE AUG 14 1975

CONDITIONS OF APPROVAL, IF ANY:

NEW MEXICO OIL CONSERVATION COMMISSION
WELL LOCATION AND ACREAGE DEDICATION PLAT

Form C-102
 Supersedes C-128
 Effective 1-1-65

All distances must be from the outer boundaries of the Section.

Operator Mobil Oil Corporation			Lease North Vacuum Abo Unit		Well No. 224
Unit Letter B	Section 11	Township 17-S	Range 34-E	County Lea	

Actual Footage Location of Well:

745	feet from the	North	line and	1880	feet from the	East	line	
Ground Level elev. 4046.7	Producing Formation Abo		Pool North Vacuum-Abo		Dedicated Acreage: 80 (2 wells)			Acres

1. Outline the acreage dedicated to the subject well by colored pencil or hachure marks on the plat below.
2. If more than one lease is dedicated to the well, outline each and identify the ownership thereof (both as to working interest and royalty).
3. If more than one lease of different ownership is dedicated to the well, have the interests of all owners been consolidated by communitization, unitization, force-pooling, etc?

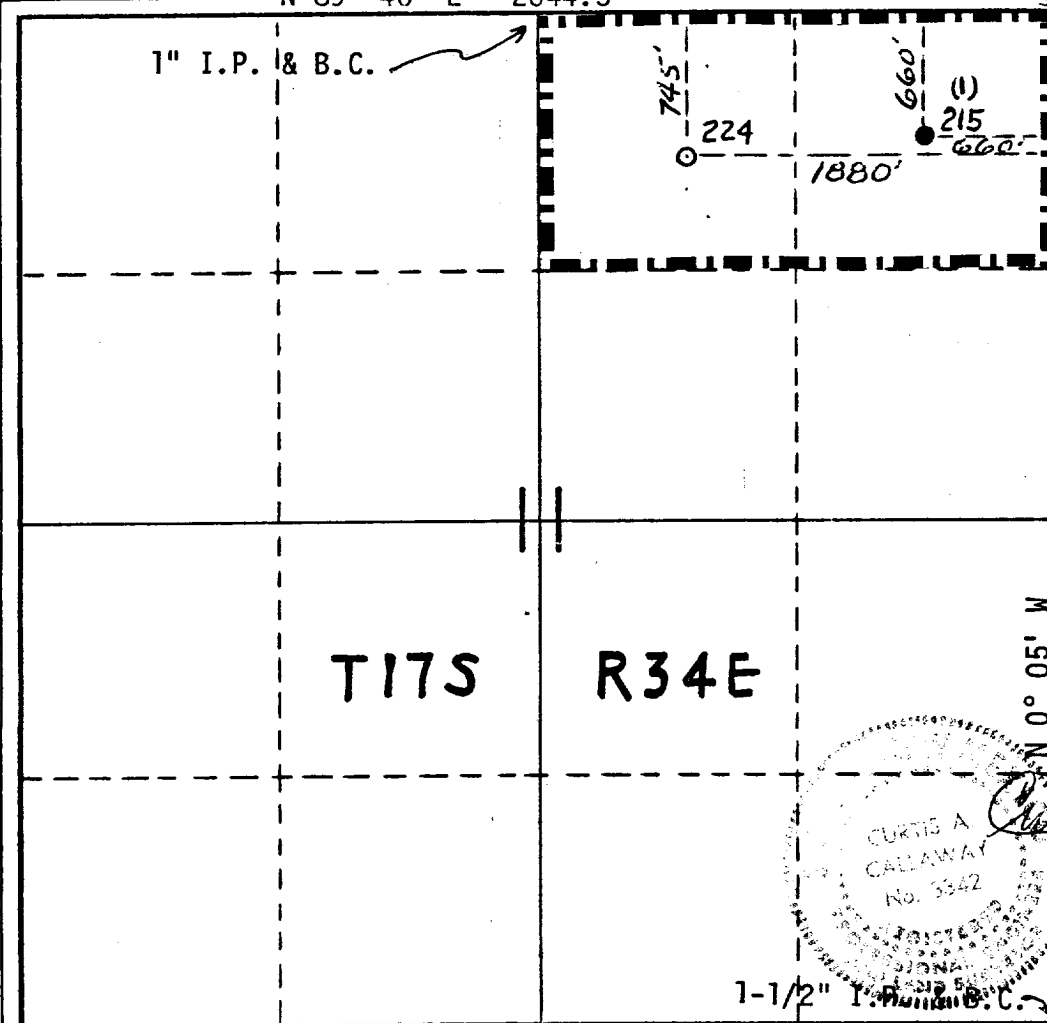
☒ Yes ☐ No If answer is "yes," type of consolidation Unitization

If answer is "no," list the owners and tract descriptions which have actually been consolidated. (Use reverse side of this form if necessary.) _____

No allowable will be assigned to the well until all interests have been consolidated (by communitization, unitization, forced-pooling, or otherwise) or until a non-standard unit, eliminating such interests, has been approved by the Commission.

N 89° 40' E - 2644.3'

1" I. Rod in R.M.



CERTIFICATION

I hereby certify that the information contained herein is true and complete to the best of my knowledge and belief.

Name
W. B. Simmons, Jr.
 Position
Associate Engineer
 Company
Mobil Oil Corporation
 Date
August 11, 1975

I hereby certify that the well location shown on this plat was plotted from field notes of actual surveys made by me or under my supervision, and that the same is true and correct to the best of my knowledge and belief.

Date Surveyed
August 7, 1975
 Registered Professional Engineer and/or Land Surveyor

Curtis A. Callaway
 Certificate No.

3342

Injection Profile 12-28-88

ET