

NO. OF COPIES RECEIVED	
DISTRIBUTION	
SANTA FE	
FILE	
U.S.G.S.	
LAND OFFICE	
OPERATOR	

NEW MEXICO OIL CONSERVATION COMMISSION

Form C-101
Revised 1-1-65

5A. Indicate Type of Lease
STATE ☒ FEE ☐

5. State Oil & Gas Lease No.

B-1520

APPLICATION FOR PERMIT TO DRILL, DEEPEN, OR PLUG BACK

1a. Type of Work		7. Unit Agreement Name	
b. Type of Well OIL WELL <input checked="" type="checkbox"/> GAS WELL <input type="checkbox"/> OTHER <input type="checkbox"/> DEEPEN <input type="checkbox"/> PLUG BACK <input type="checkbox"/>		North Vacuum Abo Unit	
2. Name of Operator		8. Farm or Lease Name	
Mobil Oil Corporation			
3. Address of Operator		9. Well No.	
P. O. Box 633, Midland, Texas 79701		223	
4. Location of Well UNIT LETTER <u>A</u> LOCATED <u>660</u> FEET FROM THE <u>North</u> LINE AND <u>460</u> FEET FROM THE <u>East</u> LINE OF SEC. <u>13</u> TWP. <u>17-S</u> RGE. <u>34-E</u> NMPM		11. Field and Pool, or Wildcat	
		North Vacuum Abo	
		12. County	
		Lea	
		13. Depth	
		8750'	
		14A. Formation	
		Abo	
		20. Rotary or C.T.	
		Rotary	
21. Elevations (Show whether DE, RT, etc.)		21A. Kind & Status of Prop. Bond	
4014.5 GR		On File	
		21B. Drilling Contractor	
		Unknown	
		22. Approx. Date Work will start	
		As soon as possible	

PROPOSED CASING AND CEMENT PROGRAM

SIZE OF HOLE	SIZE OF CASING	WEIGHT PER FOOT	SETTING DEPTH	SACKS OF CEMENT	EST. TOP
17-1/2"	13-3/8"	48# - H-40	0-250'	Circulate	Surface
12-1/4"	8-5/8"	20# - Misco	0-1200'		
		24# - LBF-55	1200-2400'	-Circulate	Surface
		28# - LBF	2400-3140'		
7-7/8"	5-1/2"	15.5# - K-55	0-3000'	- Circulate	Surface
		17# - K-55	3000-8750'		

BLOWOUT PREVENTER PROGRAM:

Casing String	Equip. Size & API Series	No. & Type	Test Pressure PSI
Surface	8" 600	Dual w/Pipe & Blank Rams	1000

NOV 15 1975
EXPIRES

IN ABOVE SPACE DESCRIBE PROPOSED PROGRAM: IF PROPOSAL IS TO DEEPEN OR PLUG BACK, GIVE DATA ON PRESENT PRODUCTIVE ZONE AND PROPOSED NEW PRODUCTIVE ZONE. GIVE BLOWOUT PREVENTER PROGRAM, IF ANY.

I hereby certify that the information above is true and complete to the best of my knowledge and belief.

Signed A. D. Bond A. D. Bond Title Proration Staff Assistant Date August 12, 1975

(This space for State Use)

APPROVED BY John W. Reunyan TITLE DATE

CONDITIONS OF APPROVAL, IF ANY:

NEW MEXICO OIL CONSERVATION COMMISSION
WELL LOCATION AND ACREAGE DEDICATION PLAT

Form C-102
 Supersedes C-128
 Effective 1-1-65

All distances must be from the outer boundaries of the Section.

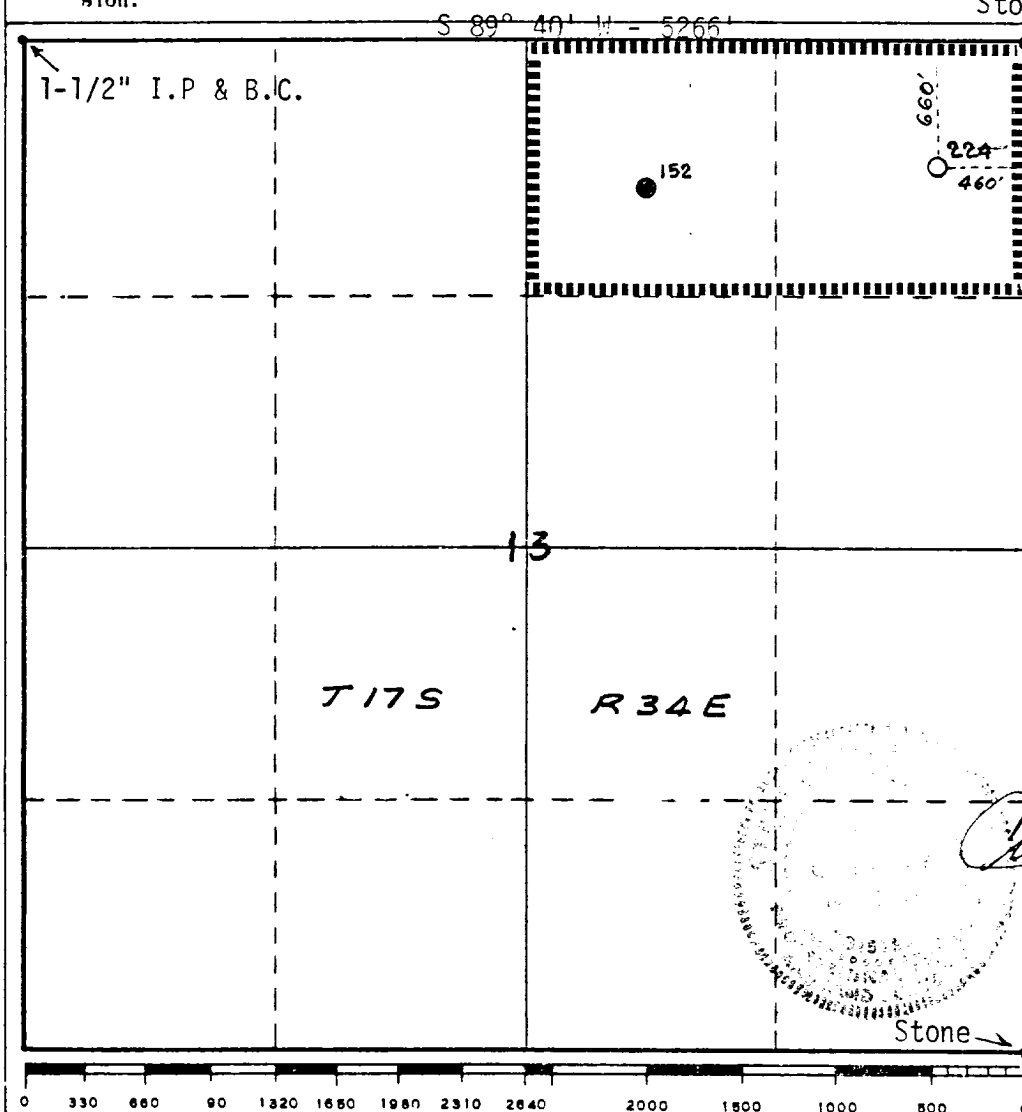
Operator Mobil Oil Corporation			Lease North Vacuum Abo Unit		Well No. 223
Unit Letter A	Section 13	Township 17-S	Range 34-E	County Lea	
Actual Footage Location of Well: 660 feet from the North line and 460 feet from the East line					
Ground Level Elev. 4014.5'	Producing Formation Abo		Pool North Vacuum Abo	Dedicated Acreage: 80 (2 wells) Acres	

1. Outline the acreage dedicated to the subject well by colored pencil or hatchure marks on the plat below.
2. If more than one lease is dedicated to the well, outline each and identify the ownership thereof (both as to working interest and royalty).
3. If more than one lease of different ownership is dedicated to the well, have the interests of all owners been consolidated by communitization, unitization, force-pooling, etc?

☒ Yes ☐ No If answer is "yes," type of consolidation Unitization

If answer is "no," list the owners and tract descriptions which have actually been consolidated. (Use reverse side of this form if necessary.) _____

No allowable will be assigned to the well until all interests have been consolidated (by communitization, unitization, forced-pooling, or otherwise) or until a non-standard unit, eliminating such interests, has been approved by the Commission.



CERTIFICATION	
I hereby certify that the information contained herein is true and complete to the best of my knowledge and belief.	
<i>A. D. Bond</i>	
Name	A. D. Bond
Position	Proration Staff Assistant
Company	Mobil Oil Corporation
Date	August 12, 1975
I hereby certify that the well location shown on this plat was plotted from field notes of actual surveys made by me or under my supervision, and that the same is true and correct to the best of my knowledge and belief.	
<i>Curtis A. Callaway</i>	
Date Surveyed	August 7, 1975
Registered Professional Engineer and/or Land Surveyor	
Curtis A. Callaway	
Certificate No.	3342