

1

NEW MEXICO OIL CONSERVATION COMMISSION

Form O-101
Revised 1-1-65

5A. Indicate Type of Lease
STATE ☒ FEE ☐

5. State Oil & Gas Lease No.
K 5278

NEW MEXICO OIL CONSERVATION COMMISSION

Form O-101
Revised 1-1-65

APPLICATION FOR PERMIT TO DRILL, DEEPEN, OR PLUG BACK

1. Type of work
a. Type of well DRILL ☒ DEEPEN ☐ PLUG BACK ☐
b. Type of well OIL WELL ☒ GAS WELL ☐ OTHER ☐
c. Name of Operator The Wiser Oil Company
d. Address of Operator P.O. Box 2467 Hobbs, New Mexico 88240
e. Location of well UNIT LETTER B LOCATED 330 FEET FROM THE North LINE
f. Location of well NO. 1900 FEET FROM THE East LINE OF SEC. 26 TWP. 13S RSE. 37E NMPM
g. Proposed Depth 4300
h. Formation Grayburg
i. Rotary or C.T. Rotary
j. Elevation of casing (surface or R.T., etc.) 3665.9 GR
k. Kind & Status Plug Bond Blanket-Good Standing M-G-F
l. Approx. Date Work will start 9-13-75

PROPOSED CASING AND CEMENT PROGRAM

SIZE OF HOLE	SIZE OF CASING	WEIGHT PER FOOT	SETTING DEPTH	SACKS OF CEMENT	EST. TOP
12-1/4"	8-5/8"	24#	350	225	Surface
7-7/8"	4-1/2"	11.60#	4300	350	2650

We plan to drill through the Grayburg pay section, run a full set of open hole logs, run 4-1/2" casing, selectively perforate and treat the Grayburg pay section as necessary to make a completion.

The following BOP will be installed on the 8-5/8" surface casing before drilling out of the surface pipe:

Schafer Model E Double Gate BOP
10' - 900 Series
3000# WP and 5000# Test Pressure

APPROVAL VALID
FOR 90 DAYS UNLESS
DRILLING COMMENCED,

EXPIRES Dec 10, 1975

IN ABOVE SPACE DESCRIBE PROPOSED PROGRAM: IF PROPOSAL IS TO DEEPEN OR PLUG BACK, GIVE DATA ON PRESENT PRODUCTIVE ZONE AND PROPOSED NEW PRODUCTIVE ZONE. GIVE BLOWOUT PREVENTER PROGRAM, IF ANY.

I hereby certify that the information above is true and complete to the best of my knowledge and belief.

Signed John W. Rungan Title District Supt. Date 9-10-75

(This space for State Use)

APPROVED BY John W. Rungan TITLE District Supt. DATE 9-10-75
CONDITIONS OF APPROVAL, IF ANY:

NEW MEXICO OIL CONSERVATION COMMISSION
WELL LOCATION AND ACREAGE DEDICATION PLAT

Form C-102
Supersedes C-128
Effective 1-1-65

All distances must be from the outer boundaries of the Section

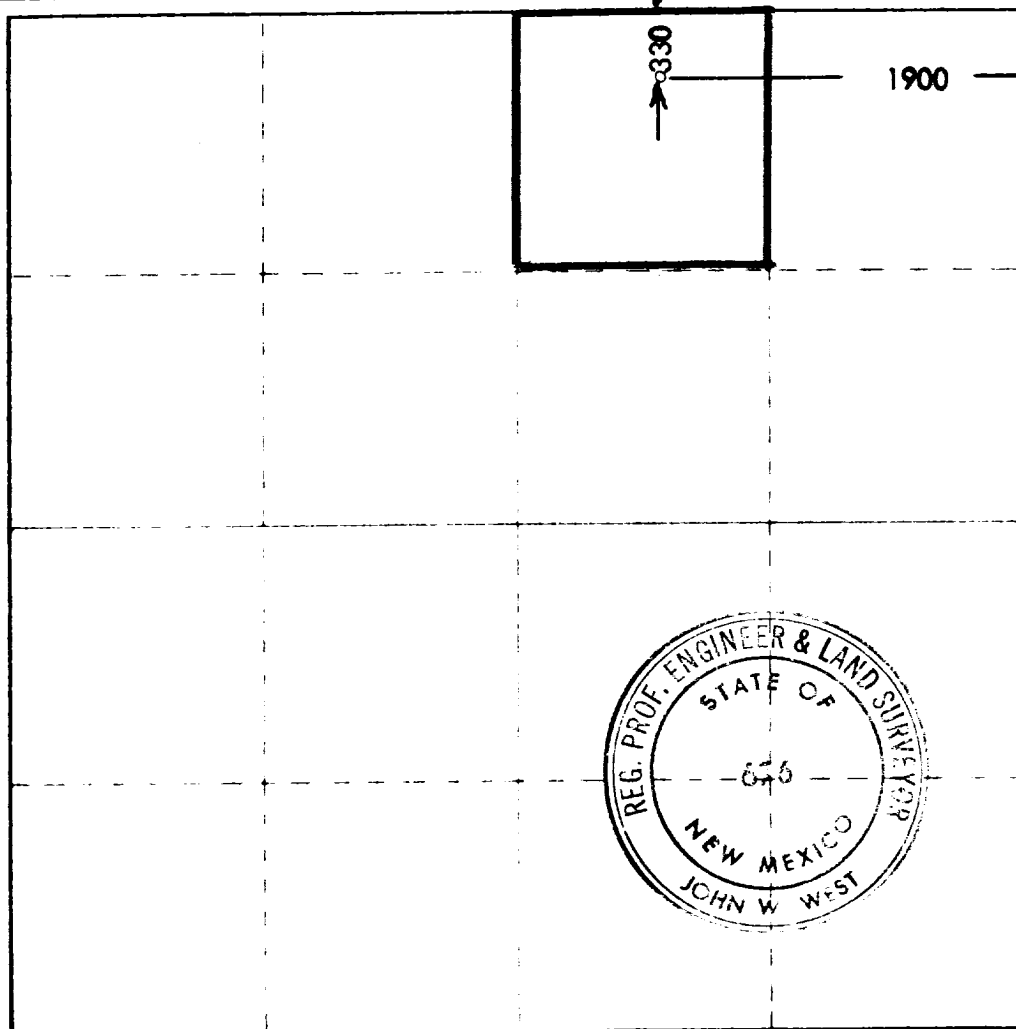
Operator Wiser Oil Company		Lease State L		Well No. 1
Tract Letter B	Section 26	Township 18 South	Range 37 East	County Lea
Actual Well Location of Well:				
330	feet from the	North	line and	1900
			feet from the	East
Ground Level Elev. 3665.9	Producing Formation Grayburg	Pool Hobbs	Dedicated Acreage: 40	

- Outline the acreage dedicated to the subject well by colored pencil or hatchure marks on the plat below.
- If more than one lease is dedicated to the well, outline each and identify the ownership thereof (both as to working interest and royalty).
- If more than one lease of different ownership is dedicated to the well, have the interests of all owners been consolidated by communitization, unitization, force-pooling, etc?

☐ Yes ☐ No If answer is "yes," type of consolidation _____

If answer is "no," list the owners and tract descriptions which have actually been consolidated. (Use reverse side of this form if necessary.) _____

No allowable will be assigned to the well until all interests have been consolidated (by communitization, unitization, forced-pooling, or otherwise) or until a non-standard unit, eliminating such interests, has been approved by the Commission.



CERTIFICATION

I hereby certify that the information contained herein is true and complete to the best of my knowledge and belief.

B.D. Singletary
B.D. Singletary

District Supt.

The Wiser Oil Co.

9-10-75

I hereby certify that the well location shown on this plat was plotted from field notes of actual surveys made by me or under my supervision, and that the same is true and correct to the best of my knowledge and belief.

Date Surveyed
9-9-1975

Registered Professional Engineer
and Land Surveyor

John W. West
John W. West

676

0 330 660 990 1320 1650 1980 2310 2640 2970 3300 3630 3960 4290 4620 4950 5280 5610 5940 6270 6600 6930 7260 7590 7920 8250 8580 8910 9240 9570 9900