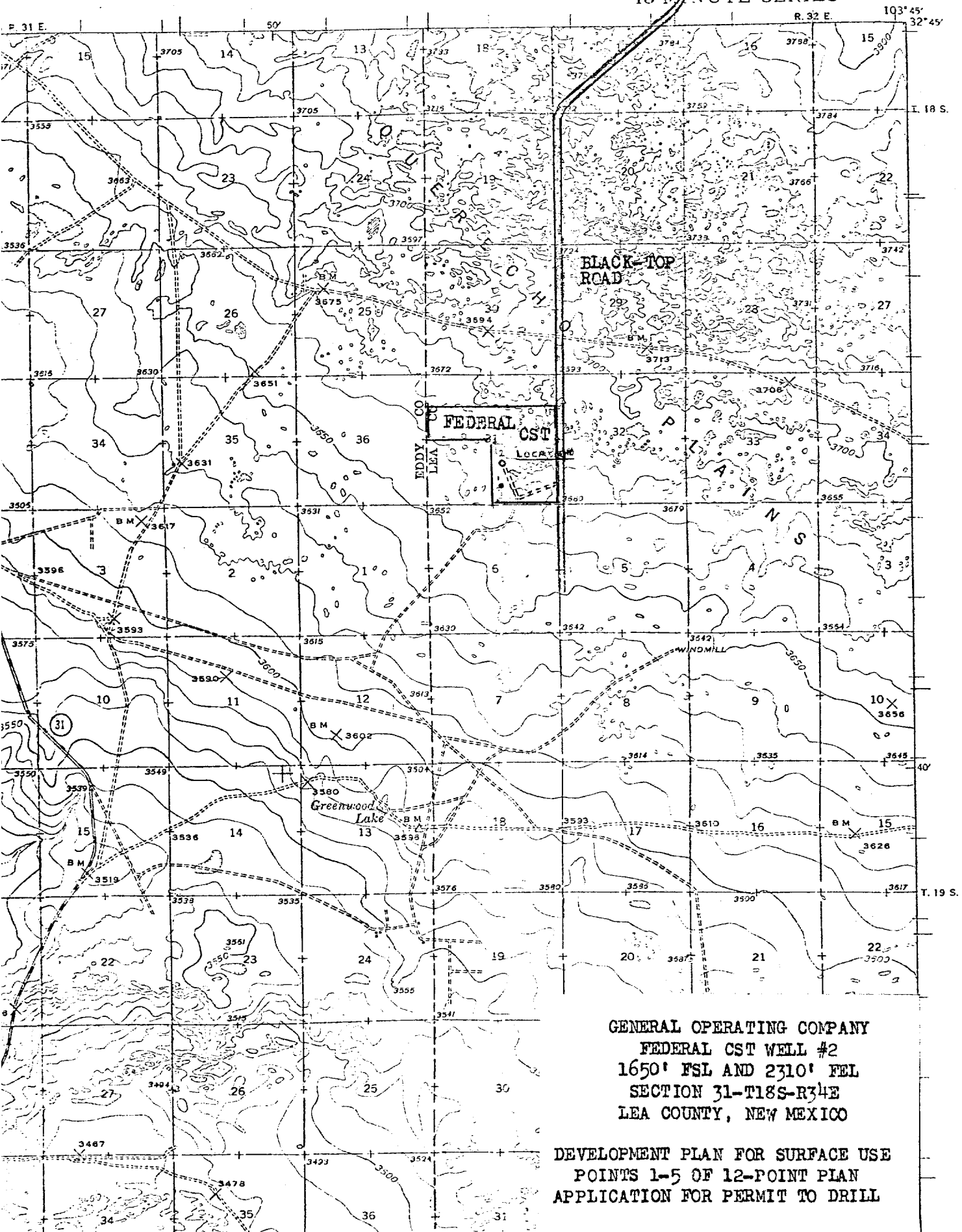


NEW MEXICO
CLAYTON BASIN QUADRANGLE
15-MINUTE SERIES



GENERAL OPERATING COMPANY
FEDERAL CST WELL #2
1650' FSL AND 2310' FEL
SECTION 31-T18S-R34E
LEA COUNTY, NEW MEXICO

DEVELOPMENT PLAN FOR SURFACE USE
POINTS 1-5 OF 12-POINT PLAN
APPLICATION FOR PERMIT TO DRILL