

NO. OF COPIES RECEIVED	
DISTRIBUTION	
SANTA FE	
FILE	
U.S.G.S.	
LAND OFFICE	
OPERATOR	

NEW MEXICO OIL CONSERVATION COMMISSION

Form C-101
Revised 1-1-65

5A. Indicate Type of Lease	
STATE <input checked="" type="checkbox"/>	FEE <input type="checkbox"/>
5. State Oil & Gas Lease No.	
B-1520	

APPLICATION FOR PERMIT TO DRILL, DEEPEN, OR PLUG BACK

1a. Type of Work		7. Unit Agreement Name	
DRILL <input checked="" type="checkbox"/> DEEPEN <input type="checkbox"/> PLUG BACK <input type="checkbox"/>		North Vacuum Abo Unit	
b. Type of Well		8. Farm or Lease Name	
OIL WELL <input checked="" type="checkbox"/> GAS WELL <input type="checkbox"/> OTHER <input type="checkbox"/>			
SINGLE ZONE <input checked="" type="checkbox"/> MULTIPLE ZONE <input type="checkbox"/>			
2. Name of Operator		9. Well No.	
Mobil Oil Corporation		225	
3. Address of Operator		10. Field and Pool, or Wildcat	
P. O. Box 633 Midland, Texas 79701		North Vacuum-Abo	
4. Location of Well		12. County	
UNIT LETTER I LOCATED 2121 FEET FROM THE south LINE		Lea	
AND 519 FEET FROM THE east LINE OF SEC. 11 TWP. 17S RGE. 34E NMPM			
13. Proposed Depth		19A. Formation	
8700		Abo	
20. Rotary or C.T.		Rotary	
21. Elevations (Show whether DT, RT, etc.)		22. Approx. Date Work will start	
Ground - 4036'		as soon as possible	
21A. Kind & Status Plug. Bond		21B. Drilling Contractor	
on file		unknown	

PROPOSED CASING AND CEMENT PROGRAM

SIZE OF HOLE	SIZE OF CASING	WEIGHT PER FOOT	SETTING DEPTH	SACKS OF CEMENT	EST. TOP
17-1/2"	13-3/8"	48# H-40	0 - 250'	Circulate	Surface
12-1/4"	8-5/8"	20# Misco	0 - 1200'		
		24# LBF-55	1200' - 2400'		
		28# LBF	2400' - 3050'	Circulate	Surface
7-7/8"	5-1/2"	15.5# K-55	0 - 3000'		
		17# K-55	3000' - 8700'	Circulate	Surface

BLOWOUT PREVENTER PROGRAM

CASING STRING	EQUIP. SIZE & API SERIES	NO & TYPE	TEST PRESSURE PSI
Surface	8" 600	Dual W/pipe & Blank Rams	1000

APPROVAL VALID
FOR 90 DAYS UNLESS
DRILLING COMMENCED,

EXPIRES Oct 19, 1976

IN ABOVE SPACE DESCRIBE PROPOSED PROGRAM: IF PROPOSAL IS TO DEEPEN OR PLUG BACK, GIVE DATA ON PRESENT PRODUCTIVE ZONE AND PROPOSED PRODUCTIVE ZONE. GIVE BLOWOUT PREVENTER PROGRAM, IF ANY.

I hereby certify that the information above is true and complete to the best of my knowledge and belief.

Signed A. D. Bond A. D. Bond Title Proration Staff Assistant Date July 8, 1976

(This space for State Use)

Geologist

JUL 12 1976

APPROVED BY John W. Runyan TITLE Geologist DATE July 12, 1976

CONDITIONS OF APPROVAL, IF ANY:

RECEIVED

JUL 14 1971

OIL CONSERVATION COM. 110000, U. S.

NEW MEXICO OIL CONSERVATION COMMISSION
WELL LOCATION AND ACREAGE DEDICATION PLAT

Form C-102
Supersedes C-128
Effective 1-1-65

All distances must be from the outer boundaries of the Section.

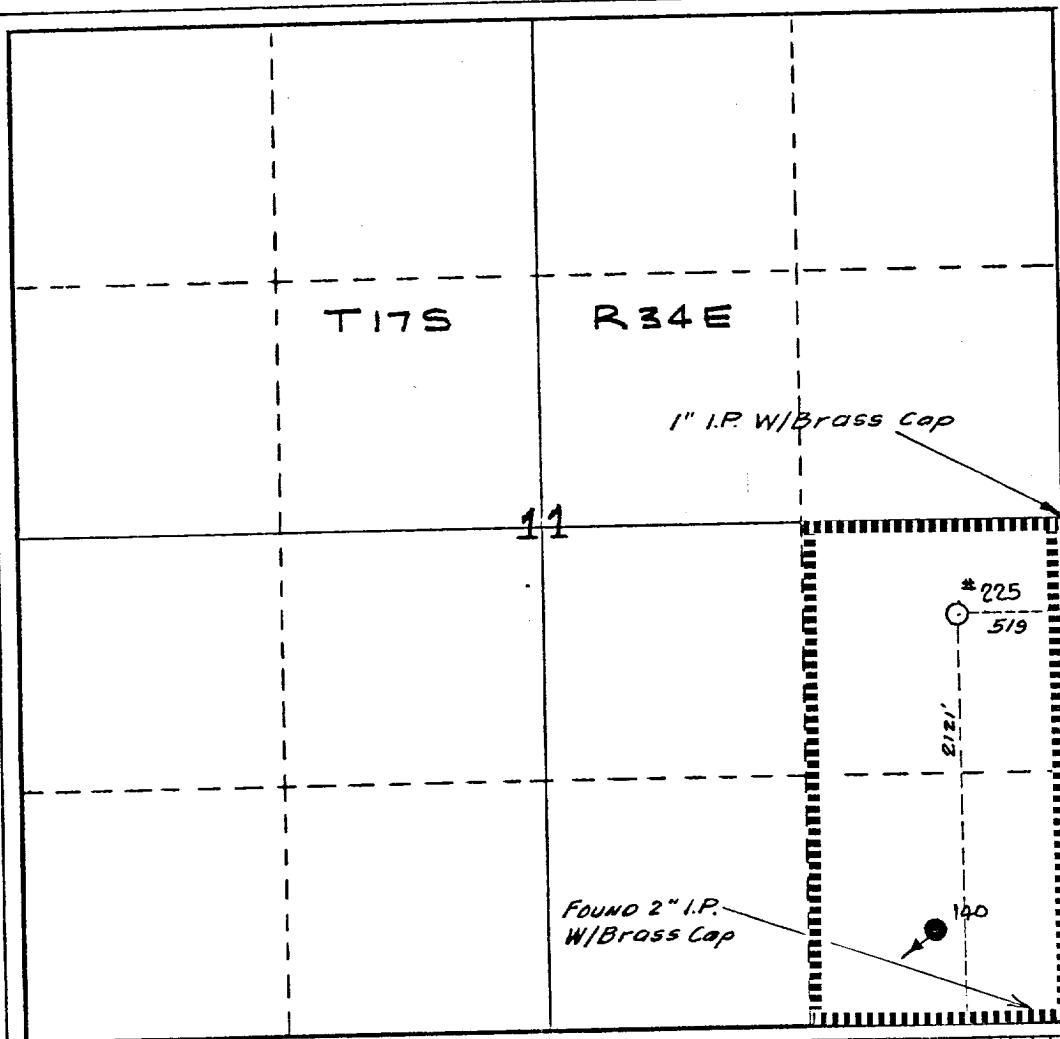
Operator Mobil Oil Corporation			Lease North Vacuum Abo Unit		Well No. 225
Unit Letter I	Section 11	Township 17S	Range 34E	County Lea	
Actual Postage Location of Well: 2121 feet from the south line and 519 feet from the east line					
Ground Level Elev. 4036	Producing Formation Abo		Pool Vacuum, North		Dedicated Acreage: 80 (2 wells) Acres

- Outline the acreage dedicated to the subject well by colored pencil or hachure marks on the plat below.
- If more than one lease is dedicated to the well, outline each and identify the ownership thereof (both as to working interest and royalty).
- If more than one lease of different ownership is dedicated to the well, have the interests of all owners been consolidated by communitization, unitization, force-pooling, etc?

☐ Yes ☐ No If answer is "yes," type of consolidation _____

If answer is "no," list the owners and tract descriptions which have actually been consolidated. (Use reverse side of this form if necessary.) _____

No allowable will be assigned to the well until all interests have been consolidated (by communitization, unitization, forced-pooling, or otherwise) or until a non-standard unit, eliminating such interests, has been approved by the Commission.



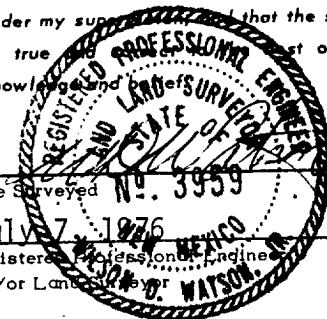
CERTIFICATION

I hereby certify that the information contained herein is true and complete to the best of my knowledge and belief.

A. D. Bond

Name
A. D. Bond
Position
Proration Staff Assistant
Company
Mobil Oil Corporation
Date
July 8, 1976

I hereby certify that the well location shown on this plat was plotted from field notes of actual surveys made by me or under my supervision and that the same is true to the best of my knowledge and belief.



Date Surveyed
July 7, 1976
Registered Professional Engineer and/or Land Surveyor
Wilson D. Watson, Jr.
Certificate No.
3959

RECEIVED

JUL 1 1975

OIL CONSERVATION COMM.
HOUSTON, TEX.

113