

UNITED STATES
DEPARTMENT OF THE INTERIOR
BUREAU OF LAND MANAGEMENT

APPLICATION FOR PERMIT TO DRILL, DEEPEN, OR PLUG BACK

1a. TYPE OF WORK

DRILL ☐

DEEPEN ☐

PLUG BACK ☒

b. TYPE OF WELL

OIL
WELL ☒

GAS
WELL ☐

OTHER

SINGLE
ZONE ☒

MULTIPLE
ZONE ☐

2. NAME OF OPERATOR

Amoco Production Company Room 18.132

3. ADDRESS OF OPERATOR

P.O. Box 4891 Houston TX 77210

4. LOCATION OF WELL (Report location clearly and in accordance with any State requirements.)*

At surface

660' FSL X 1980' FEL (Unit 0, SW/4, SE/4)

At proposed prod. zone

36-125-25782

14. DISTANCE IN MILES AND DIRECTION FROM NEAREST TOWN OR POST OFFICE*

32 miles Northeast of Carlsbad, NM

15. DISTANCE FROM PROPOSED*

LOCATION TO NEAREST
PROPERTY OR LEASE LINE, FT.
(Also to nearest drig. unit line, if any)

16. NO. OF ACRES IN LEASE

17. NO. OF ACRES ASSIGNED
TO THIS WELL

40

15. DISTANCE FROM PROPOSED LOCATION*
TO NEAREST WELL, DRILLING, COMPLETED,
OR APPLIED FOR, ON THIS LEASE, FT.

19. PROPOSED DEPTH

20. ROTARY OR CABLE TOOLS

21. ELEVATIONS (Show whether DF, RT, GR, etc.)

3680.7' GL

22. APPROX. DATE WORK WILL START*

ASAP

23. PROPOSED CASING AND CEMENTING PROGRAM

SIZE OF HOLE	SIZE OF CASING	WEIGHT PER FOOT	SETTING DEPTH	QUANTITY OF CEMENT
17 1/2"	13-3/8"	48#	430	430 sx Class H
12-1/4"	9-5/8"	36#	5001	2400 sx Lite, 200 sx Class C
8-3/4"	5-1/2"	15.5#	13669	1750 sx Lite, 1250 sx Class H

Purpose: Abandon current Wolfcamp horizon and recomplete to Bone Spring.

1. MURUSU

2. Pull pump, rods, and tubing. (Note: Rods are currently parted.)

3. TTH with CIBP and set within 50' of top open Wolfcamp perf found at 11,170'. Cap with 35' cml.

4. Circulate hole clean with 2% KCl.

5. Rig up perforators and perf the following Bone Spring intervals with 2 JSPP, 90 degree phasing using charges large enough to create 0.5" diameter holes:

8800 - 8856	56'
8894 - 8970	76'
9066 - 9080	14'
9338 - 9400	62'
208' TOTAL	

6. Rig Down perforators.

7. Rig up Dowell and acidize perfed interval with 50 gallons per ft. 20% NEFE HCl with 1 gallon per 1000 corrosion inhibitor using PPI tool with 10' spacing.

8. Flow/Swab well to test. Well may be frac'd or zones may be tested individually based on results of flow tests.

IN ABOVE SPACE DESCRIBE PROPOSED PROGRAM: If proposal is to deepen or plug back, give data on present productive zone and proposed new productive zone. If proposal is to drill or deepen directionally, give pertinent data on subsurface locations and measured and true vertical depths. Give blowout preventer program, if any.

24. SIGNED H. J. Shaw (H.J. BLAU) 713-366-7213

SIGNED

TITLE

STAFF BUSINESS ANALYST

DATE

5-25-95

(This space for Federal or State office use)

PERMIT NO.

APPROVAL DATE

APPROVED BY

Signed by Shannon J. Shaw

TITLE

PETROLEUM ENGINEER

DATE

6/26/95

CONDITIONS OF APPROVAL, IF ANY:

*See Instructions On Reverse Side

MEXICO OIL CONSERVATION COMMISSION
WELL LOCATION AND ACREAGE DEDICATION PLAT

Form C-102
 Supersedes C-128
 Effective 1-1-65

All distances must be from the outer boundaries of the Section.

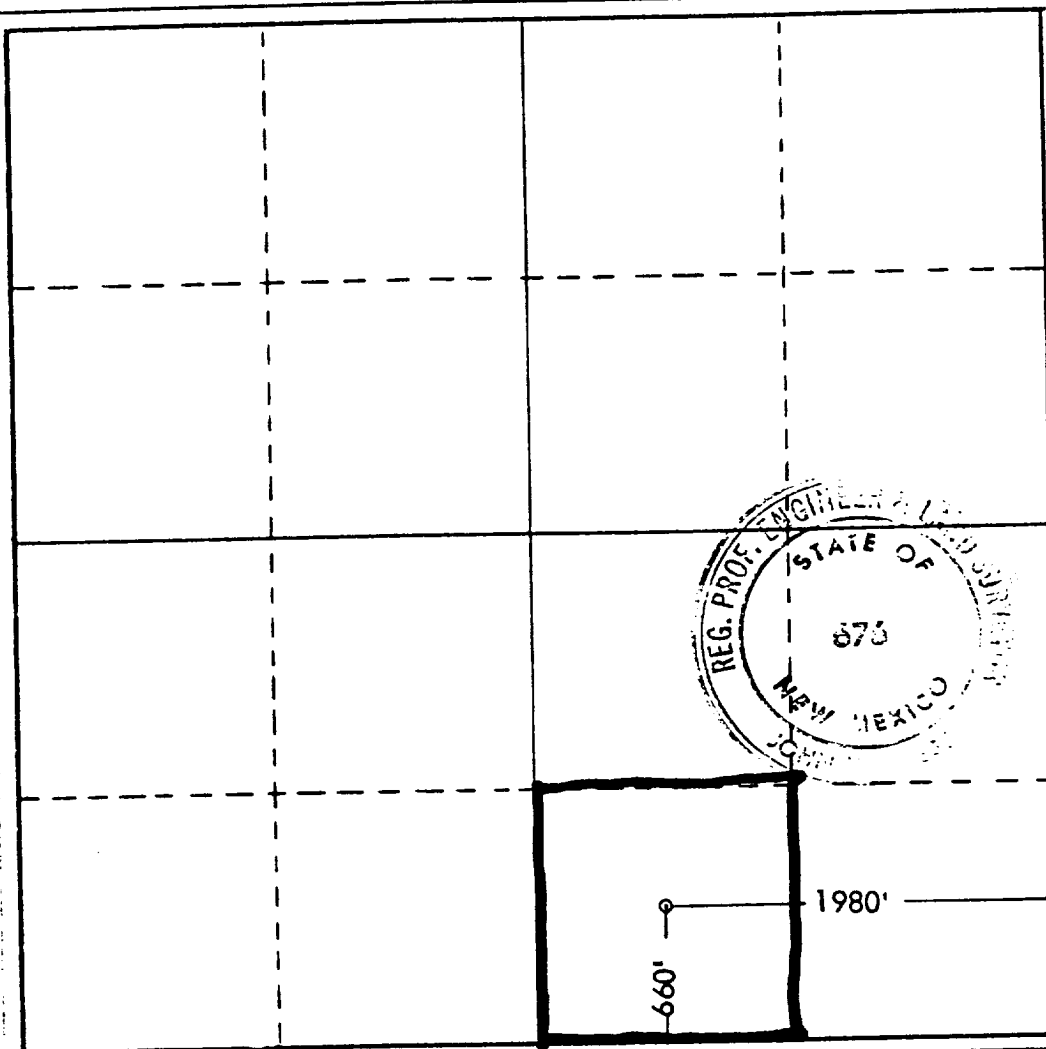
Operator Amoco Production Company			Lease Nellis Federal		Well No. 2
Unit Letter O	Section 6	Township 19 South	Range 33 East	County Lea	
Actual Footage Location of Well: 660 feet from the South line and 1980 feet from the East line					
Ground Level Elev. 3680.7	Producing Formation Bone Spring	Pool Undesignated Bone Spring	Dedicated Acreage: 40 Acres		

1. Outline the acreage dedicated to the subject well by colored pencil or hachure marks on the plat below.
2. If more than one lease is dedicated to the well, outline each and identify the ownership thereof (both as to working interest and royalty).
3. If more than one lease of different ownership is dedicated to the well, have the interests of all owners been consolidated by communitization, unitization, force-pooling, etc?

☐ Yes ☐ No If answer is "yes," type of consolidation _____

If answer is "no," list the owners and tract descriptions which have actually been consolidated. (Use reverse side of this form if necessary.) _____

No allowable will be assigned to the well until all interests have been consolidated (by communitization, unitization, forced-pooling, or otherwise) or until a non-standard unit, eliminating such interests, has been approved by the Commission.



CERTIFICATION

I hereby certify that the information contained herein is true and complete to the best of my knowledge and belief.

H. I. Black

Name

H. I. BLACK

Position

Staff Business Analyst

Company

Amoco Production

Date

May 25, 1994

I hereby certify that the well location shown on this plat was plotted from field notes of actual surveys made by me or under my supervision, and that the same is true and correct to the best of my knowledge and belief.

Date Surveyed

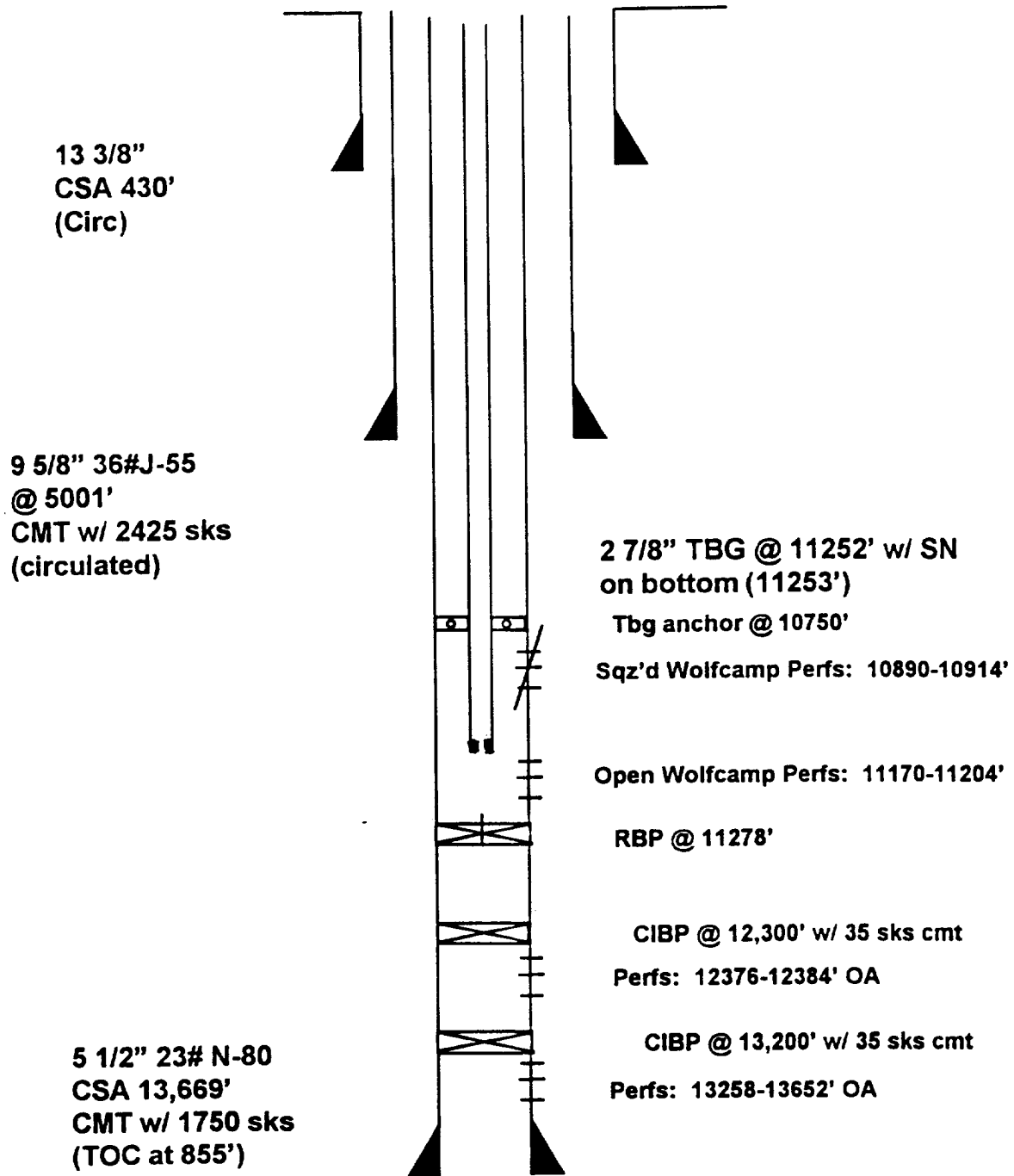
December 13, 1977

Registered Professional Engineer and/or Land Surveyor

John W. West

Certificate No. **676**

Nellis Federal #2



STANDARD 2000 PSI W.P. BOP STACK

1. Blow-out preventers may be manually operated.
2. All equipment must be in good condition, 2,000 psi W.P. (4,000 psi test) minimum.
3. Bell nipple above blow-out preventer shall be same size as casing being drilled through.
4. Kelly cock to be installed on kelly.
5. Full opening safety valve 2,000 psi w.p. (4,000 psi test) minimum must be available on rig floor at all times with proper connection or subs to fit any tool joint in string.
6. Spool or cross may be eliminated if connections are available in the lower part of the blow-out preventer body.
7. Double or space saver type preventers may be used in lieu of two single preventers.
8. BOP rams to be installed as follows:
 - Top preventer - Drill pipe or casing rams
 - Bottom preventer - Blind rams

*Amoco District Superintendent may reverse location of rams.
9. Extensions and hand wheels to be installed and braced at all times.
10. Manifold valves may be gate or plug metal to metal seal 2" minimum.

