

NEW MEXICO OIL CONSERVATION COMMISSION
WELL LOCATION AND ACREAGE DEDICATION PLAT

Form C-128
Supersedes C-128
Effective 1-1-65

All distances must be from the outer boundaries of the Section

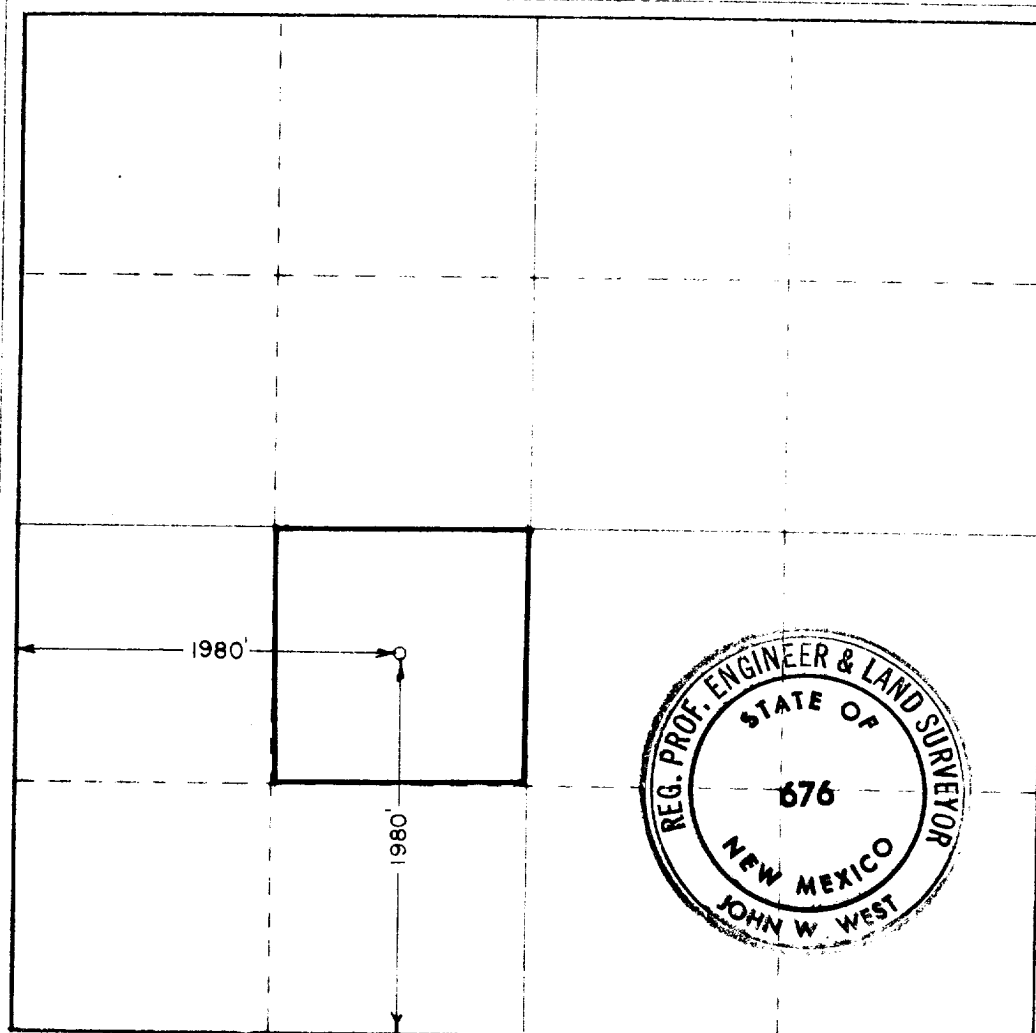
Operator Energy Reserves Group, Inc.		Lease Amoco State A		Well No. 1
Section K	Section 18	Township 18 South	Range 35 East	County Lea
Actual Plotage Location of Well: 1980 feet from the South line and 1980 feet from the West line				
Ground Level Elev. 3964.0	Producing Formation Alamo	Footage 1980	Dedicated Acreage 40	

1. Outline the acreage dedicated to the subject well by colored pencil or hatchure marks on the plat below.
2. If more than one lease is dedicated to the well, outline each and identify the ownership thereof (both as to working interest and royalty).
3. If more than one lease of different ownership is dedicated to the well, have the interests of all owners been consolidated by communitization, unitization, force-pooling, etc?

☐ Yes ☐ No If answer is "yes" type of consolidation _____

If answer is "no," list the owners and tract descriptions which have actually been consolidated (Use reverse side of this form if necessary) _____

No allowable will be assigned to the well until all interests have been consolidated (by communitization, unitization, forced-pooling, or otherwise) or until a non-standard unit, eliminating such interests, has been approved by the Commission.



CERTIFICATION

I hereby certify that the information contained herein is true and complete to the best of my knowledge and belief

John W. West
District Engineer
Energy Reserves Group Inc.
6-27-78

I hereby certify that the well location shown on this plat was plotted from field notes of actual surveys made by me or under my supervision and that the same is true and correct to the best of my knowledge and belief

Date Surveyed

June 20, 1978

Registered Professional Engineer
in the State of New Mexico

John W. West
Certificate No. **John W. West 676**

Ronald J. Eidson 3239