

NO. OF COPIES RECEIVED	
DISTRIBUTION	
SANTA FE	
FILE	
U.S.G.S.	
LAND OFFICE	
OPERATOR	

# NEW MEXICO OIL CONSERVATION COMMISSION

Form C-101  
Revised 1-1-65

5A. Indicate Type of Lease	
STATE <input checked="" type="checkbox"/>	FEE <input type="checkbox"/>

5. State Oil & Gas Lease No.

## APPLICATION FOR PERMIT TO DRILL, DEEPEN, OR PLUG BACK

1a. Type of Work		7. Unit Agreement Name	
b. Type of Well OIL WELL <input type="checkbox"/> GAS WELL <input type="checkbox"/> OTHER <input type="checkbox"/>		8. Farm or Lease Name	
DRILL <input checked="" type="checkbox"/> DEEPEN <input type="checkbox"/> PLUG BACK <input type="checkbox"/>		Central Vacuum Unit	
2. Name of Operator Texaco Inc.		9. Well No. 134	
3. Address of Operator P. O. Box 3109 Midland, Texas 79702		10. Field and Pool, or Wildcat Vacuum Grayburg-S.A.	
4. Location of Well UNIT LETTER D LOCATED 40 FEET FROM THE North LINE AND 40 FEET FROM THE West LINE OF SEC. 7 TWP. 18-S RGE. 35-E NMPM		11. County Lea	
14. Proposed Depth 4800'		15A. Formation Grayburg-S.A.	
16. Elevations (Show whether DF, RI, etc.) 3982' GR		20. Rotary or C.T. Rotary	
21A. Kind & Status Plug. Bond		22. Approx. Date Work will start 7-10-78	

23.

## PROPOSED CASING AND CEMENT PROGRAM

SIZE OF HOLE	SIZE OF CASING	WEIGHT PER FOOT	SETTING DEPTH	SACKS OF CEMENT	EST. TOP
15"	13 3/8"	48#H-40 STC	350'	200	Circulate
12 1/4"	9 5/8"	32.3#H-40STC	1550'	700	Circulate
7 7/8"	4 1/2"	10.5#K-55STC	4800'	2000-2700	Circulate

Surface Casing: 200 sx Class "C" w/2% Cacl, 14.8#/Gal < 300% of Volume to circulate- cement must circulate.

Intermediate Casing: 700 sx Class "C" w/2% Cacl, 14.8#/Gal < 200% Volume to circulate-cement must circulate.

Production Casing: Cmt w/2000-2500 sx LW cmt w/15# salt E<sub>4</sub># flocele/sx (until cmt circulates) follow w/200 sx Class "C" w/8# salt + 1/4# flocele/sx + friction reducer.

IN ABOVE SPACE DESCRIBE PROPOSED PROGRAM: IF PROPOSAL IS TO DEEPEN OR PLUG BACK, GIVE DATA ON PRESENT PRODUCTIVE ZONE AND PROPOSED NEW PRODUCTIVE ZONE. GIVE BLOWOUT PREVENTER PROGRAM, IF ANY.

I hereby certify that the information above is true and complete to the best of my knowledge and belief.

Signed: Dale Holloman Title: Assistant Div. Petr. Engr. Date: 6-22-78

(This space for State Use)

SUPERVISOR DISTRICT I

JUL 28 1978

APPROVED BY: [Signature] TITLE: \_\_\_\_\_ DATE: \_\_\_\_\_

CONDITIONS OF APPROVAL, IF ANY:

NEW MEXICO OIL CONSERVATION COMMISSION  
WELL LOCATION AND ACREAGE DEDICATION PLAT

Form C-102  
Supersedes C-128  
Effective 1-1-65

All distances must be from the outer boundaries of the Section.

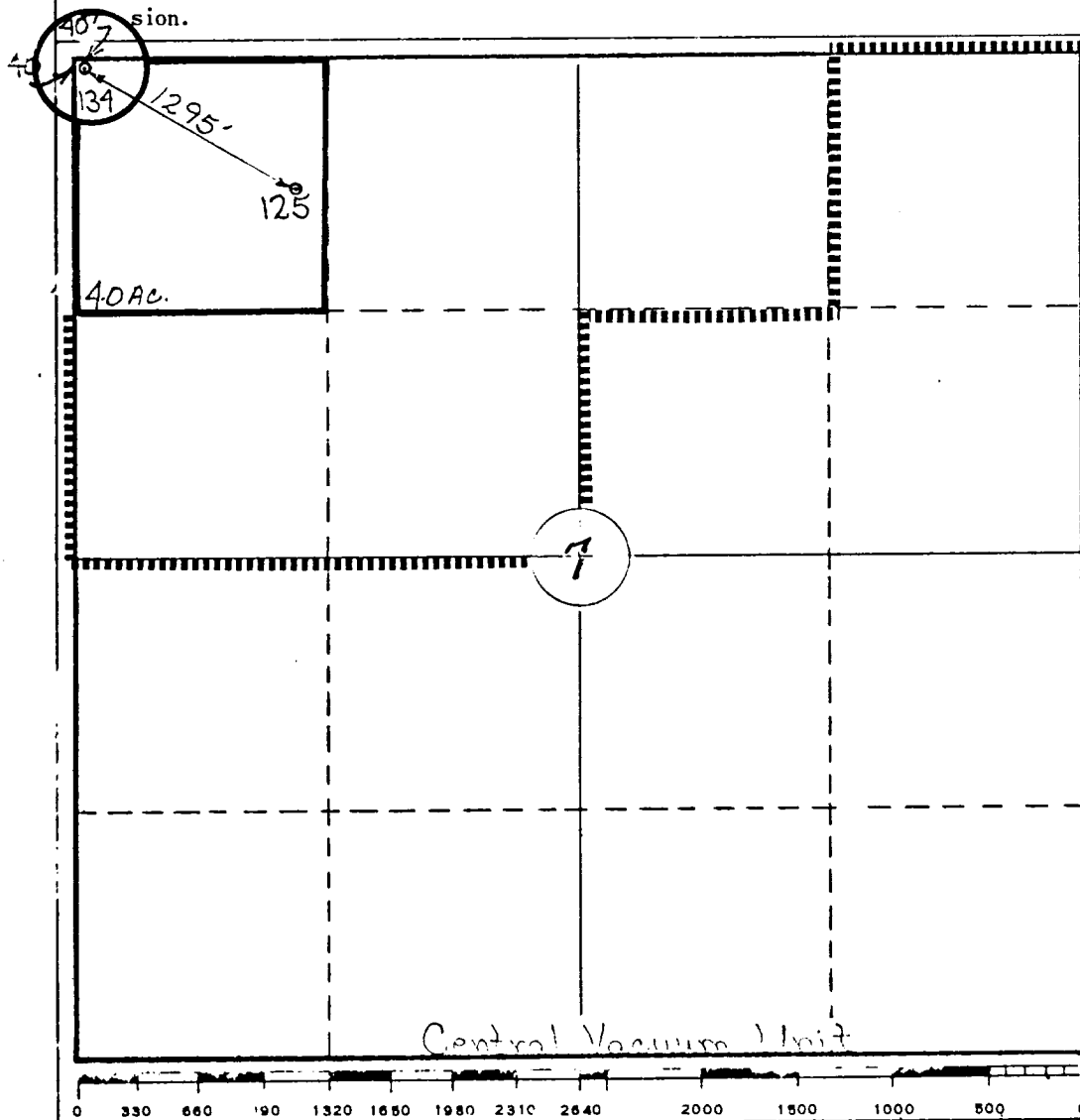
Operator Texaco Inc.		Lease Central Vacuum Unit		Well No. 134
Unit Letter D	Section 7	Township T-18-S	Range R-35-E	County Lea
Actual Footage Location of Well: 40 feet from the North line and 40 feet from the West line Sec. 7				
Ground Level Elev. 4800'	Producing Formation Grayburg San Andres	Pool Vacuum Grayburg San Andres	Dedicated Acreage: 40 Acres	

1. Outline the acreage dedicated to the subject well by colored pencil or hachure marks on the plat below.
2. If more than one lease is dedicated to the well, outline each and identify the ownership thereof (both as to working interest and royalty).
3. If more than one lease of different ownership is dedicated to the well, have the interests of all owners been consolidated by communitization, unitization, force-pooling, etc?

☐ Yes ☐ No If answer is "yes," type of consolidation \_\_\_\_\_

If answer is "no," list the owners and tract descriptions which have actually been consolidated. (Use reverse side of this form if necessary.) \_\_\_\_\_

No allowable will be assigned to the well until all interests have been consolidated (by communitization, unitization, forced-pooling, or otherwise) or until a non-standard unit, eliminating such interests, has been approved by the Commission.



CERTIFICATION

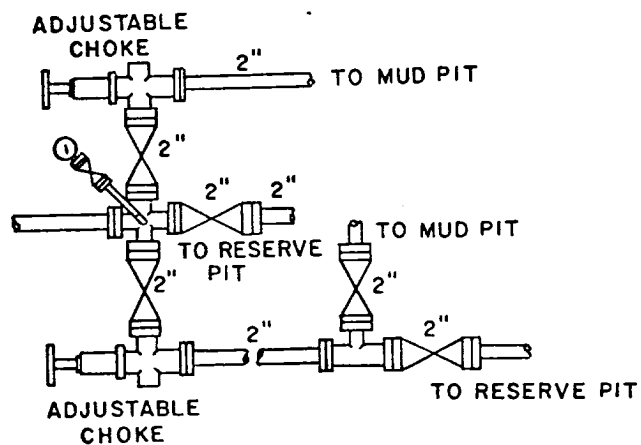
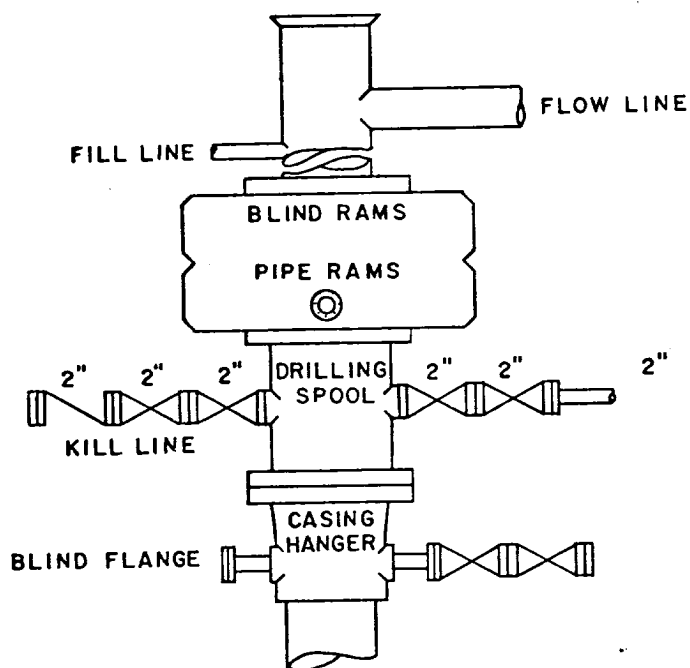
I hereby certify that the information contained herein is true and complete to the best of my knowledge and belief.

Name  
B. L. Eiland  
Position  
Division Surveyor  
Company  
Texaco Inc.  
Date  
6-22-78

I hereby certify that the well location shown on this plat was plotted from field notes of actual surveys made by me or under my supervision, and that the same is true and correct to the best of my knowledge and belief.

Date Surveyed  
6-6-78  
Registered Professional Engineer and/or Land Surveyor  
B. L. Eiland

Certificate No.  
4386



SCALE: NONE	DATE	EST. NO.	DRG. NO.
DRAWN BY JWD			
CHECKED BY RDW			
APPROVED BY			



TEXACO, INC.  
PRODUCING DEPARTMENT-U.S. (EAST)  
MIDLAND, TEXAS



EXHIBIT "B"