

NO. OF COPIES RECEIVED	
DISTRIBUTION	
SANTA FE	
FILE	
U.S.G.S.	
LAND OFFICE	
OPERATOR	

# RECEIVED

## NL MEXICO OIL CONSERVATION COMMISSION

Form C-101  
Revised 1-1-65

5A. Indicate Type of Lease	
STATE <input checked="" type="checkbox"/>	FEE <input type="checkbox"/>
5. State Oil & Gas Lease No.	
L-6940	

### APPLICATION FOR PERMIT TO DRILL, DEEPEN, OR PLUG BACK

1a. Type of Work		7. Unit Agreement Name	
b. Type of Well DRILL <input checked="" type="checkbox"/> DEEPEN <input type="checkbox"/> PLUG BACK <input type="checkbox"/> OIL WELL <input checked="" type="checkbox"/> GAS WELL <input type="checkbox"/> OTHER <input type="checkbox"/> SINGLE ZONE <input checked="" type="checkbox"/> MULTIPLE ZONE <input type="checkbox"/>		8. Farm or Lease Name	
2. Name of Operator		9. Well No.	
Yates Petroleum Corporation		1	
3. Address of Operator		10. Field and Pool, or Wildcat	
207 South Fourth Street - Artesia, NM 88210		Undes.	
4. Location of Well		12. County	
UNIT LETTER <u>D</u> LOCATED <u>660</u> FEET FROM THE <u>North</u> LINE		Lea	
AND <u>660</u> FEET FROM THE <u>West</u> LINE OF SEC. <u>14</u> TWP. <u>18S</u> RGE. <u>35E</u> NMPM			
		19. Proposed Depth	
		11,400'	
		19A. Formation	
		Strawn	
		20. Rotary or C.T.	
		Rotary	
21. Elevations (Show whether DF, RT, etc.)		22. Approx. Date Work will start	
3996.6' GR		Feb. 15, 1979	
21A. Kind & Status Plug. Bond		21B. Drilling Contractor	
Blanket		Forster Drilling Co.	

### PROPOSED CASING AND CEMENT PROGRAM

SIZE OF HOLE	SIZE OF CASING	WEIGHT PER FOOT	SETTING DEPTH	SACKS OF CEMENT	EST. TOP
17-1/2"	13-3/8"	48# J-55	Approx 400'	300 sacks	Circulate
12 1/4 or 11"	8-5/8"	24# J-55	" 4550'	1600 sacks	Circulate
7-7/8"	5 1/2 or 4 1/2"	15.5-17# or 10.5-11.6#	" 11400'	300 sacks	

We propose to drill and test the Strawn formation and intermediate zones. Approximately 400' of surface casing will be set, cement will be circulated to shut off gravel and cavings. Intermediate casing will be set approximately 50' into the San Andres and cement circulated. If productive, 4 1/2" or 5 1/2" casing will be run and cement.

Mud Program: FW Gel to 400', native mud to 500', brine-starch-driskpak-oil to 10200', brine-flosal-driskpak to TD.

BOP Program: BOP's to be installed on intermediate casing and tested, pipe rams daily.

APPROVAL VALID  
FOR 90 DAYS UNLESS  
DRILLING COMMENCED.

IN ABOVE SPACE DESCRIBE PROPOSED PROGRAM: IF PROPOSAL IS TO DEEPEN OR PLUG BACK, GIVE DATA ON PRESENT PRODUCTIVE ZONE AND PROPOSED NEW PRODUCTIVE ZONE. GIVE BLOWOUT PREVENTER PROGRAM, IF ANY.

hereby certify that the information above is true and complete to the best of my knowledge and belief.

Signed Eddie M. Lively Title Engineer Date 1-25-79

(This space for State Use)

APPROVED BY John W. Ryan TITLE Geologist DATE JAN 23 1979

CONDITIONS OF APPROVAL, IF ANY:

NEW MEXICO OIL CONSERVATION COMMISSION  
WELL LOCATION AND ACREAGE DEDICATION PLAT

Form C-102  
Supersedes C-124  
Effective 1-1-65

All distances must be from the outer boundaries of the Section

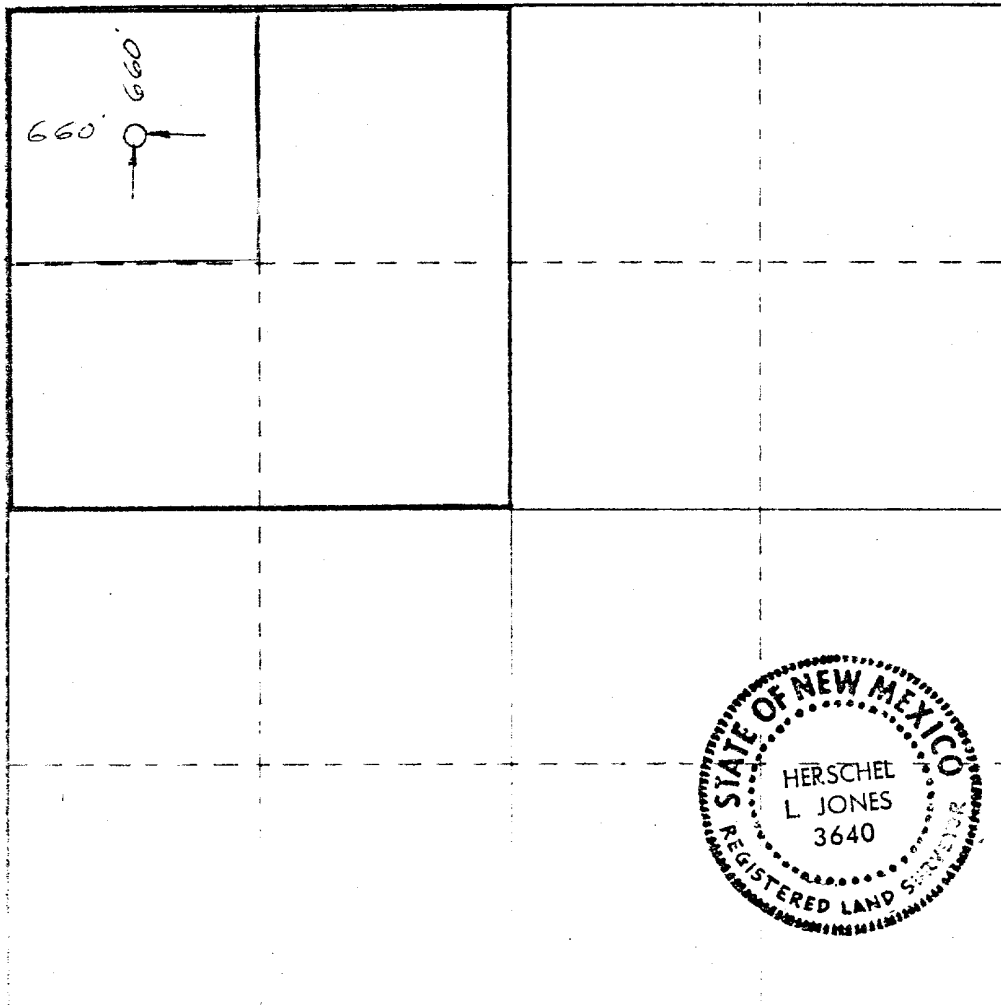
Operator <b>YATES PETROLEUM CORPORATION</b>		Lease <b>Reeves State K K</b>		Well No. <b>1</b>
Section <b>"D"</b>	Section <b>14</b>	Township <b>18 South</b>	Range <b>35 East</b>	County <b>Lea</b>
Annual Production Location of Well: 660 feet from the <b>North</b> line and 660 feet from the <b>West</b> line				
Ground Level Elev. <b>3896.6</b>	Producing Formation <b>Strawn (oil)</b>	Pool <b>Undes (Reeves Pennsylvanian)</b>	Dedicated Acreage: <b>160</b> Acres	

- Outline the acreage dedicated to the subject well by colored pencil or hatchure marks on the plat below.
- If more than one lease is dedicated to the well, outline each and identify the ownership thereof (both as to working interest and royalty).
- If more than one lease of different ownership is dedicated to the well, have the interests of all owners been consolidated by communitization, unitization, force-pooling, etc?

☐ Yes ☐ No If answer is "yes;" type of consolidation \_\_\_\_\_

If answer is "no;" list the owners and tract descriptions which have actually been consolidated. (Use reverse side of this form if necessary.) \_\_\_\_\_

No allowable will be assigned to the well until all interests have been consolidated (by communitization, unitization, forced-pooling, or otherwise) or until a non-standard unit, eliminating such interests, has been approved by the Commission.



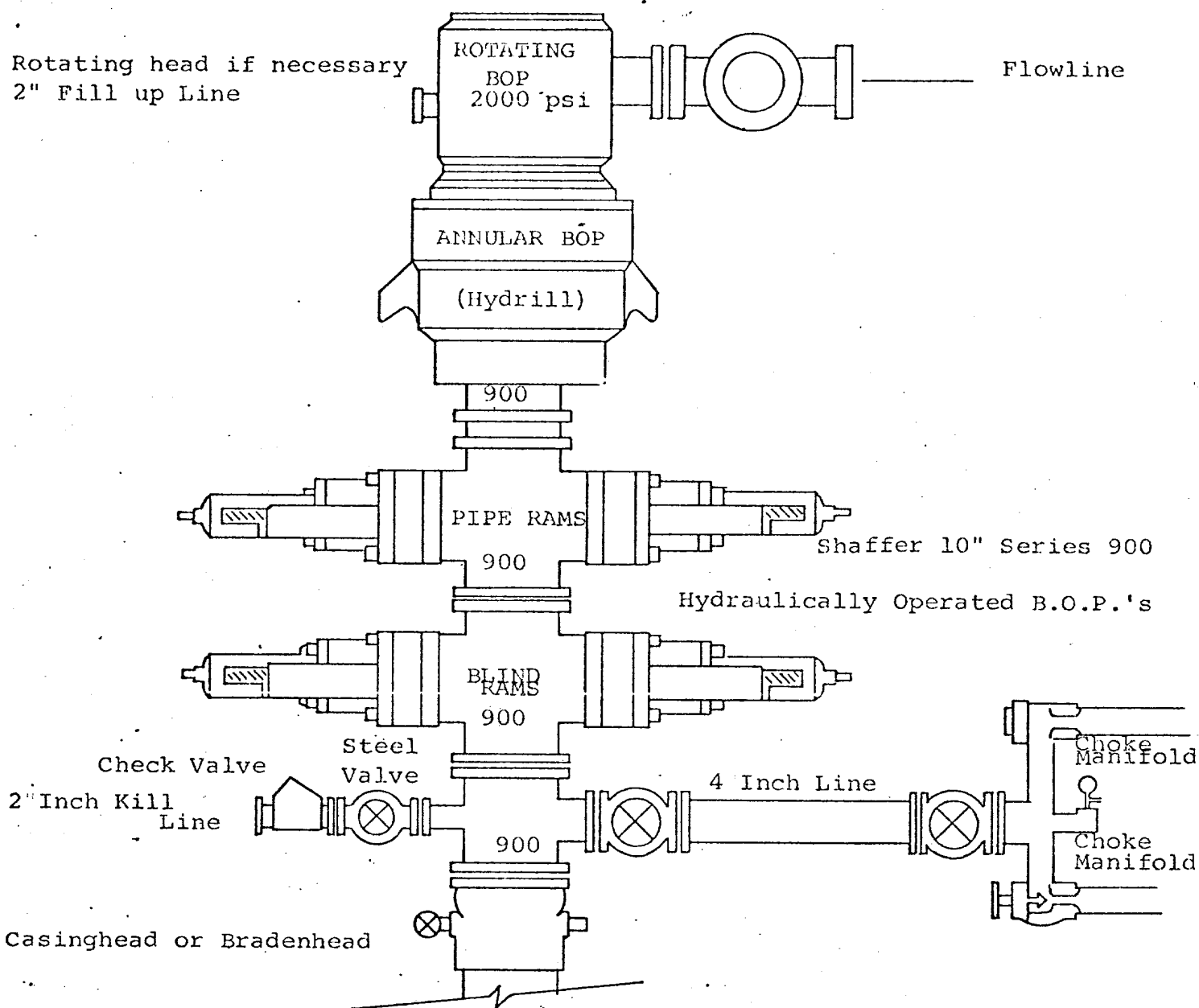
CERTIFICATION

I hereby certify that the information contained herein is true and complete to the best of my knowledge and belief.

*Eddie M. Mahfood*  
Name  
**Eddie M. Mahfood**  
Position  
**ENGINEER**  
Company  
**YATES PETROLEUM CORP**  
Date  
**1-23-79**

I hereby certify that the well location shown on this plat was plotted from field notes of actual surveys made by me or under my supervision, and that the same is true and correct to the best of my knowledge and belief.

January 9, 1979  
*Herschel L. Jones*  
3640



THE FOLLOWING CONSTITUTE MINIMUM BLOWOUT PREVENTER REQUIREMENTS

1. All preventers to be hydraulically operated with secondary manual controls installed prior to drilling out from under casing.
2. Choke outlet to be a minimum of 4" diameter.
3. Kill line to be of all steel construction of 2" minimum diameter.
4. All connections from operating manifolds to preventers to be all steel. hole or tube a minimum of one inch in diameter.
5. The available closing pressure shall be at least 15% in excess of that required with sufficient volume to operate the B.O.P.'s.
6. All connections to and from preventer to have a pressure rating equivalent to that of the B.O.P.'s.
7. Inside blowout preventer to be available on rig floor.
8. Operating controls located a safe distance from the rig floor.
9. Hole must be kept filled on trips below intermediate casing. Operator not responsible for blowouts resulting from not keeping hole full.
10. D. P. float must be installed and used below zone of first gas intrusion.