

All distances must be from the outer boundaries of the Section.

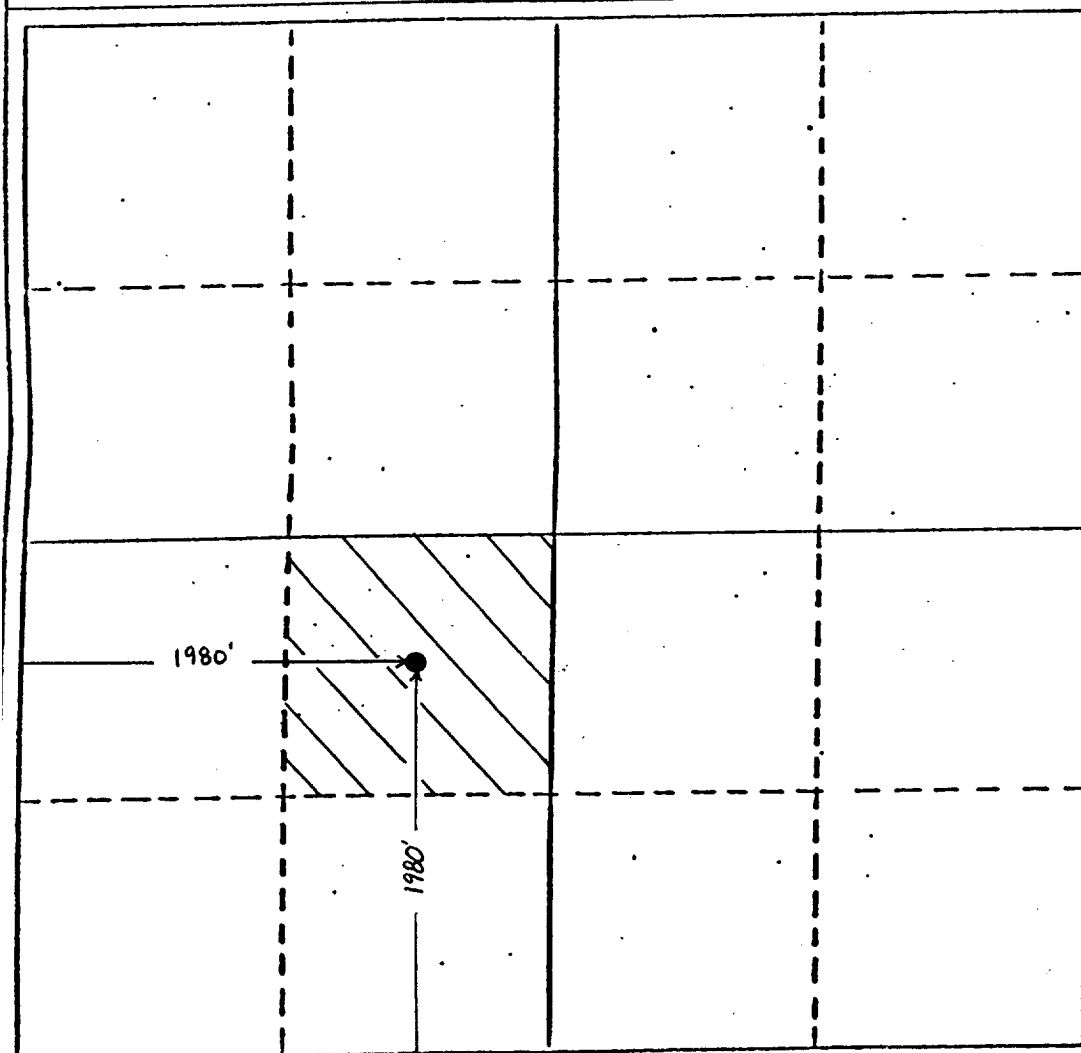
Operator Chevron U.S.A. Inc.		Lease Vandiver Federal		Well No. 1
Unit Letter K	Section 33	Township 18S	Range 32E	County Lea
Actual Footage Location of Well: 1980 feet from the South line and 1980 feet from the West line				
Ground Level Elev. 3299' GL	Producing Formation Wolfcamp	Pool N. Lusk Wolfcamp	Dedicated Acres 40 Acres	

1. Outline the acreage dedicated to the subject well by colored pencil or hatchure marks on the plat below.
2. If more than one lease is dedicated to the well, outline each and identify the ownership thereof (both as to working interest and royalty).
3. If more than one lease of different ownership is dedicated to the well, have the interests of all owners been consolidated by communitization, unitization, force-pooling, etc?

☐ Yes ☐ No If answer is "yes," type of consolidation \_\_\_\_\_

If answer is "no," list the owners and tract descriptions which have actually been consolidated. (Use reverse side of this form if necessary.) \_\_\_\_\_

No allowable will be assigned to the well until all interests have been consolidated (by communitization, unitization, forced-pooling, or otherwise) or until a non-standard unit, eliminating such interests, has been approved by the Division.



CERTIFICATION

I hereby certify that the information contained herein is true and complete to the best of my knowledge and belief.

Name M. W. Casey  
Position  
Division Proration Engineer  
Company  
Chevron U.S.A. Inc.  
Date  
6/18/86

I hereby certify that the well location shown on this plat was plotted from field notes of actual surveys made by me or under my supervision, and that the same is true and correct to the best of my knowledge and belief.

Date Surveyed

Registered Professional Engineer  
and/or Land Surveyor

Certificate No.

RECEIVED  
JUL 3 1986  
C.C.P.  
HOBBS OFFICE