

NEW MEXICO OIL CONSERVATION COMMISSION  
WELL LOCATION AND ACREAGE DEDICATION PLAT

Form C-102  
Supersedes C-128  
Effective 1-1-65

All distances must be from the outer boundaries of the Section

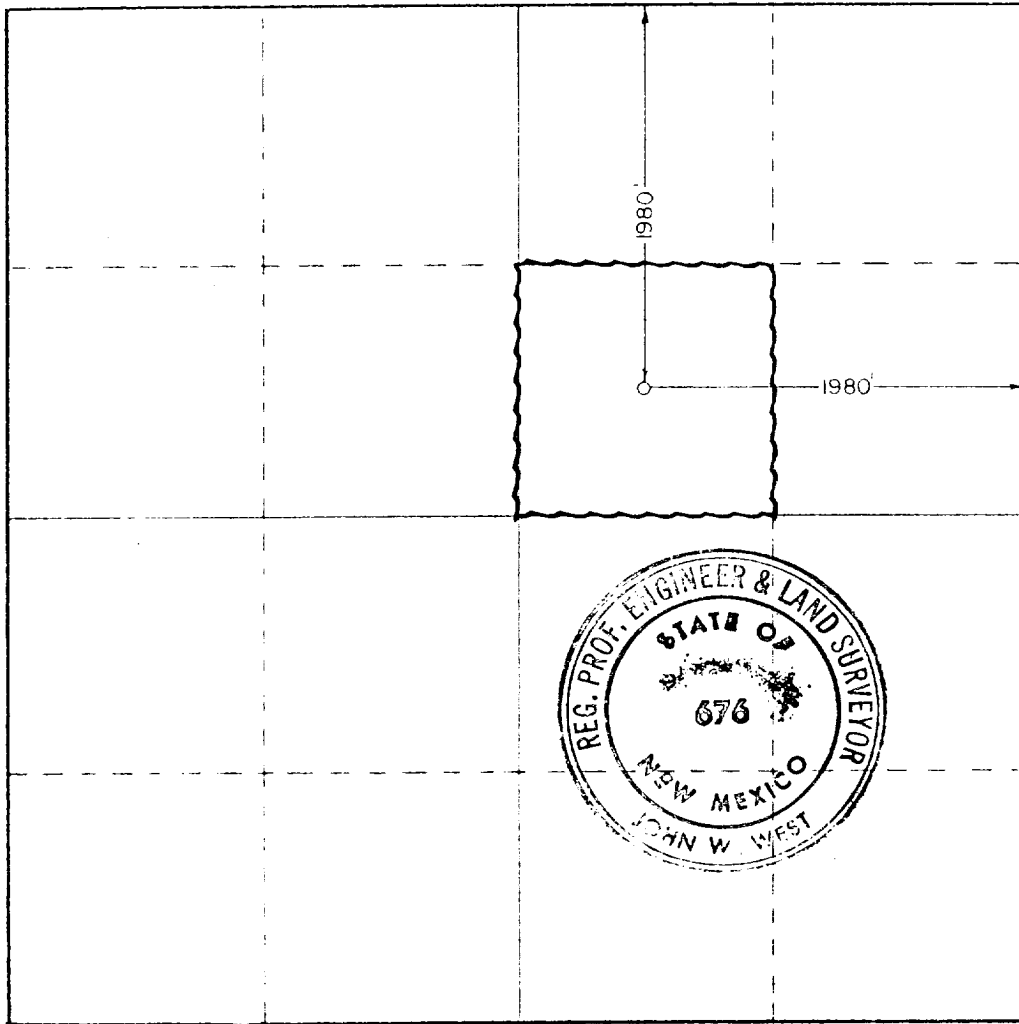
AMOCO Production Co.			Lease State FU		Well No. 4
Section G	Section 25	Range 18 South	Range 34 East	County Lea	
Acreage Dedication of Acreage					
1980 feet from the North line and		1980 feet from the East line			
Gravel acreage	Producing Acreage	Field		Dedicated Acreage	
3965.3	Wolfcamp	Airstrip Wolfcamp		40 Acres	

- Outline the acreage dedicated to the subject well by colored pencil or hatchure marks on the plat below.
- If more than one lease is dedicated to the well, outline each and identify the ownership thereof (both as to working interest and royalty).
- If more than one lease of different ownership is dedicated to the well, have the interests of all owners been consolidated by communitization, unitization, force-pooling, etc?

☐ Yes ☐ No If answer is "yes," type of consolidation \_\_\_\_\_

If answer is "no" list the owners and tract descriptions which have actually been consolidated. (Use reverse side of this form if necessary.) \_\_\_\_\_

No allowable will be assigned to the well until all interests have been consolidated (by communitization, unitization, forced-pooling, or otherwise) or until a non-standard unit, eliminating such interests, has been approved by the Commission.



CERTIFICATION

I hereby certify that the information contained herein is true and complete to the best of my knowledge and belief.

Name Bob Davis  
Position Assist. Admin. Analyst  
Company Aroco Production Company  
Date 2-13-80

I hereby certify that the well location shown on this plat was plotted from field notes of actual surveys made by me or under my supervision, and that the same is true and correct to the best of my knowledge and belief.

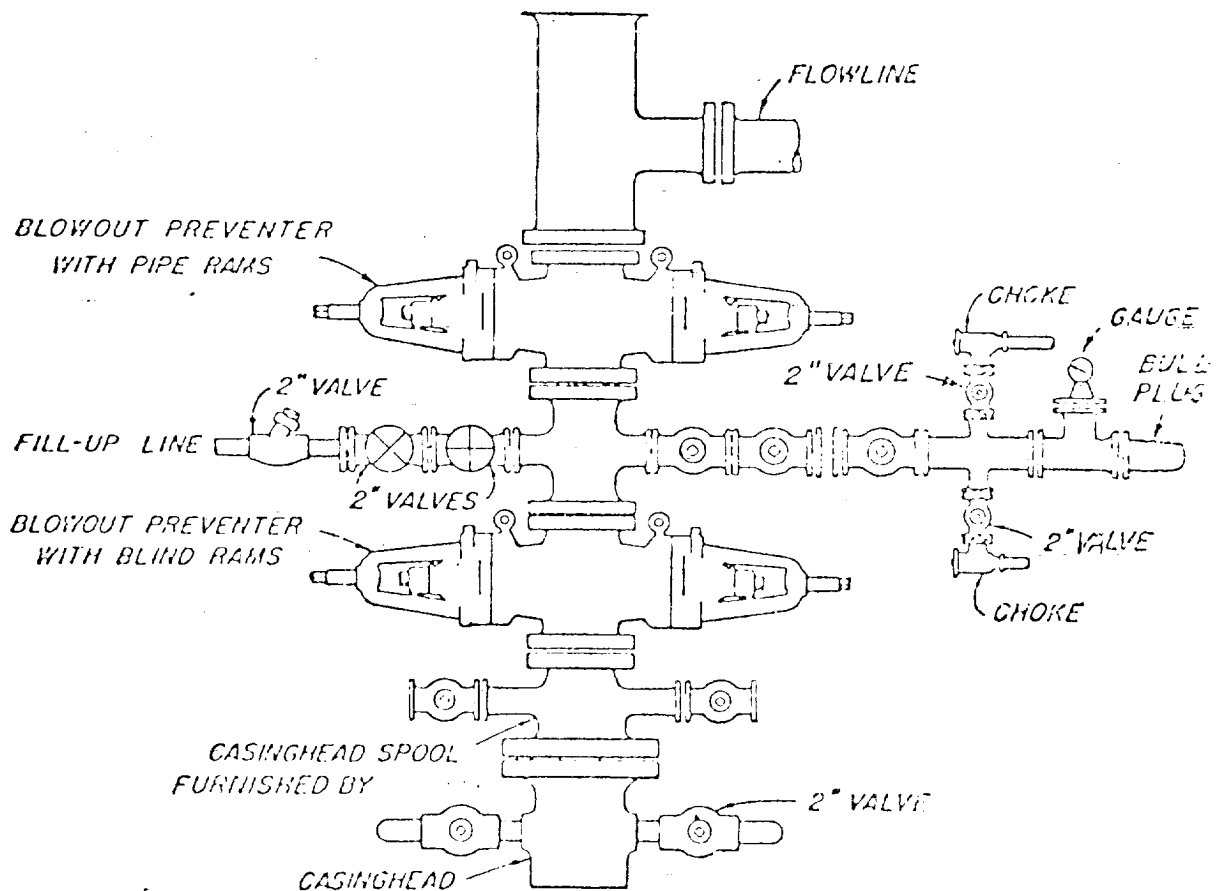
Date Surveyed January 24, 1980

Field Station - Professional Engineer and Land Surveyor

Certificate No. JOHN W. WEST 676  
PATRICK A. ROMERO 6663  
Ronald J. Eidson 3239

330 660 990 1320 1650 1980 2310 2640 2970 3300 3630 3960 4290 4620 4950 5280 5610 5940 6270 6600 6930 7260 7590 7920 8250 8580 8910 9240 9570 9900

1. Blow-out preventers and master valve to be fluid operated and oil fittings must be in good condition, 3,000# W.P. (6,000 p.s.i. test), minimum.
2. Equipment through which bit must pass shall be as large as the inside diameter of the casing that is being drilled through.
3. Nipple above blow-out preventer shall be same size as casing being drilled through.
4. Kelly cock required, 3,000# W.P. (6,000 p.s.i. test) minimum.
5. OMSCO or comparable safety valve must be available on rig floor at all times with proper connection or sub, 3,000# W.P. (6,000 p.s.i. test), minimum.
6. Blow-out preventers and master valve while drilling intermediate hole to 6000' may be 2,000# W.P. (4,000 p.s.i. test), minimum.
7. Choke assembly, beyond second valve from cross, may be positioned (Optional) outside of derrick foundation.
8. Spool or cross may be eliminated if connections are available in the lower part of the blow-out preventer body.
9. Plug valves - gate valves are optional. Valves shown as 2" are minimum size.
10. Casing head and casing head spool, including attached valves, to be furnished by Amoco.
11. Rams in preventers will be installed as follows:  
 When drilling, use:  
 Top Preventer - Drill pipe rams  
 Bottom Preventer - Blind rams or master valve  
 When running casing, use:  
 Top Preventer - Casing rams  
 Bottom Preventer - Blind rams or master valve



## BLOWOUT PREVENTER HOOK-UP

AMOCO PRODUCTION COMPANY

## EXHIBIT D-1 MODIFIED

JUNE 1, 1962

OIL CONSERVATION DIV.

FEB 15 '80

RECEIVED