

NEW MEXICO OIL CONSERVATION COMMISSION  
WELL LOCATION AND ACREAGE DEDICATION PLAT

FL -102  
Super. des C-128  
Effective 1-1-65

All distances must be from the outer boundaries of the Section.

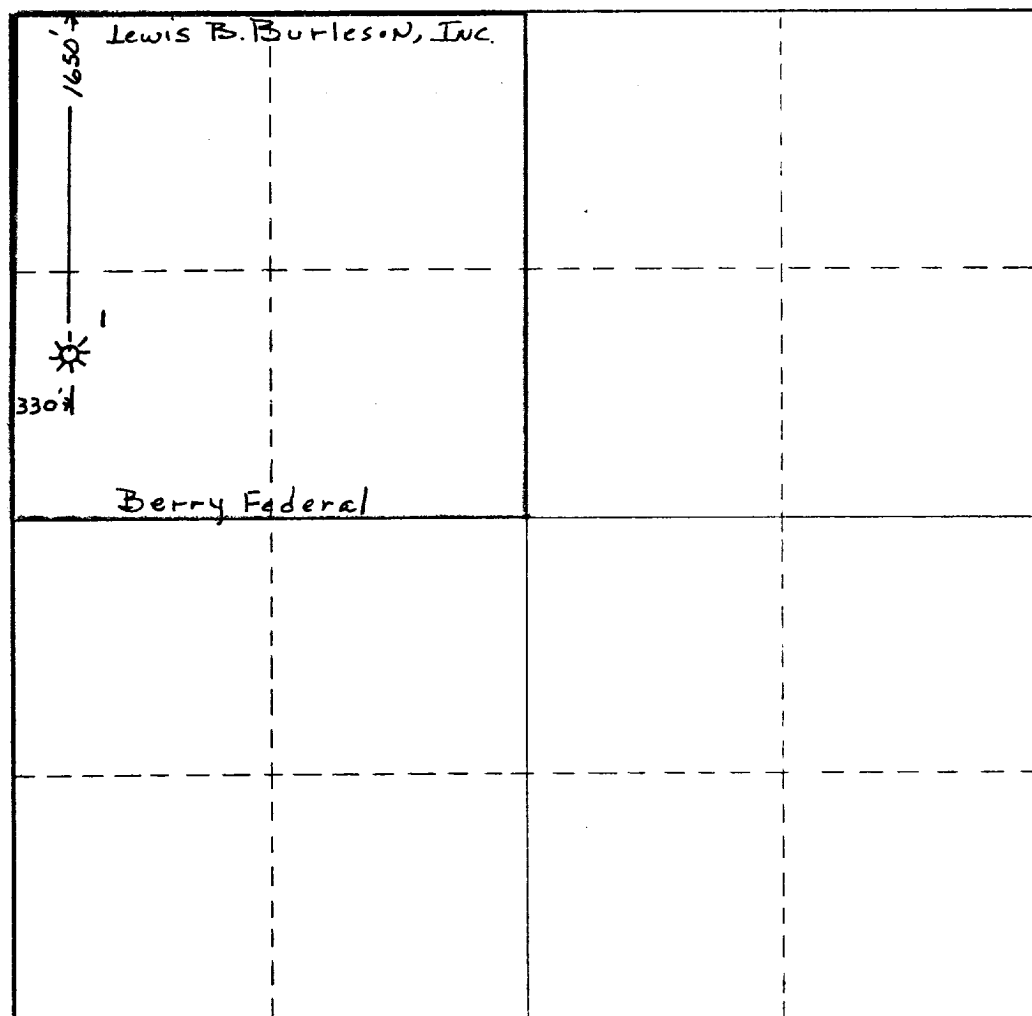
Operator <b>Lewis B. Burleson, Inc.</b>		Lessee <b>Berry Federal</b>		Well No. <b>1</b>
Unit Letter <b>E</b>	Section <b>35</b>	Township <b>18S</b>	Range <b>32E</b>	County <b>Lea</b>
Actual Footage Location of Well: <b>330</b> feet from the <b>west</b> line and <b>1650</b> feet from the <b>north</b> line				
Ground Level Elev. <b>3715.2</b>	Producing Formation <b>Yates</b>	Pool <i>North</i> <b>Querecho Plains Yates Gas</b>	Dedicated Acreage: <b>160</b> Acres	

1. Outline the acreage dedicated to the subject well by colored pencil or hachure marks on the plat below.
2. If more than one lease is dedicated to the well, outline each and identify the ownership thereof (both as to working interest and royalty).
3. If more than one lease of different ownership is dedicated to the well, have the interests of all owners been consolidated by communitization, unitization, force-pooling, etc?

☐ Yes ☐ No If answer is "yes," type of consolidation \_\_\_\_\_

If answer is "no," list the owners and tract descriptions which have actually been consolidated. (Use reverse side of this form if necessary.) \_\_\_\_\_

No allowable will be assigned to the well until all interests have been consolidated (by communitization, unitization, forced-pooling, or otherwise) or until a non-standard unit, eliminating such interests, has been approved by the Commission.



CERTIFICATION

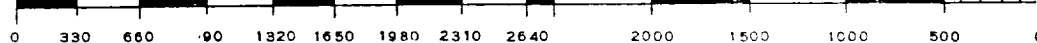
I hereby certify that the information contained herein is true and complete to the best of my knowledge and belief.

Name *L. B. Burleson*  
Position  
**President**  
Company  
**Lewis B. Burleson, Inc.**  
Date  
**11-10-80**

I hereby certify that the well location shown on this plat was plotted from field notes of actual surveys made by me or under my supervision, and that the same is true and correct to the best of my knowledge and belief.

Date Surveyed  
**Surveyed by John W. West**  
**1-25-80**  
Registered Professional Engineer  
and/or Land Surveyor

Certificate No.



COUNTY LEA FIELD Querecno Plains STATE NM  
OPR BURLESON, LEWIS B., INC. API 30-025-26709  
NO 1 LEASE Berry Federal MAP  
Sec 35, T18S, R32E CO-ORD  
1650' FNL, 3301' FWL of Sec 7-3-28 NM  
15 mi SW/Buckeye SPD 5-10-80 CMP 6-25-80

CSC	WELL CLASS: INIT D    FIN DO    LSE CODE			
8 5/8" at 372' w/250 sx	FORMATION	DATUM	FORMATION	DATUM
4 1/2" at 4165' w/1275 sx				
2 3/8" at 3205'				
	TD 4165' (QUEN)		PBD 3900'	

IP (Yates) Perfs 3249-59' F 7 BOPD + 2 BW. Pot based on 24 hr test thru 3/4" chk. GOR 1157; gty 33; CP 250#; TP 0-50#

CONTR Kenai OPRS LLEV 3715' GL, PD 4300' RT

F.R. 3-3-80  
(Queen)  
5-14-80 Drlg 1350'  
5-22-80 TD 4165'; WOCT  
6-3-80 TD 4165'; PBD 3900'; SI PBU  
Perf (Yates) @ 3249', 3250', 3252', 3254',  
3255', 3256', 3257', 3258', 3259'  
Acid (3249-59') 2000 gals  
6-10-80 TD 4165'; PBD 3900'; SI PBU  
6-17-80 TD 4165'; PBD 3900'; SI  
6-24-80 TD 4165'; PBD 3900'; Prep Frac  
7-14-80 TD 4165'; PBD 3900'; Complete  
Frac (3949-59') 30,000 gals + 45,000# sd + 45  
tons CO2  
LOG TOPS: Rustler Anhydrite 1218', Salt 1360',  
Base Salt 2650', Yates 2680', Seven Rivers  
3355', Queen 3956'  
7-19-80 COMPLETION ISSUED 7-3-28 NM  
IC 30-025-70118-80