

UNITED STATES
DEPARTMENT OF THE INTERIOR
BUREAU OF LAND MANAGEMENT

N.M. OIL CONS. COMMISSION
O BOX 1980

FORBS NEW MEXICO 88240
FORM APPROVED

Register Bureau No. 1004-0135
Expires: March 31, 1993

5. Lease Designation and Serial No.

NMNM063530

6. If Indian, Allotment or Tribe Name

7. If Unit or CA, Agreement Designation

D

8. Well Name and No.

Shearn Federal 3

9. API Well No.

30-025-26728

10. Field and Pool, or Exploratory Area

Lusk Yates, Northeast

11. County or Parish, State

Lea County, NM

SUNDRY NOTICES AND REPORTS ON WELLS

Do not use this form for proposals to drill or to deepen or reentry to a different reservoir.
Use "APPLICATION FOR PERMIT—" for such proposals

SUBMIT IN TRIPLICATE

1. Type of Well

☒ Oil Well ☐ Gas Well ☐ Other

2. Name of Operator

Floyd Operating Company

3. Address and Telephone No.

711 Louisiana, Suite 1740; Houston, Texas 77002 (713) 222-6275

4. Location of Well (Footage, Sec., T., R., M., or Survey Description)

660 FNL & 660 FWL
Section 15, Township 19S, Range 32E

12. CHECK APPROPRIATE BOX(s) TO INDICATE NATURE OF NOTICE, REPORT, OR OTHER DATA

TYPE OF SUBMISSION

- ☒ Notice of Intent
☐ Subsequent Report
☐ Final Abandonment Notice

TYPE OF ACTION

- ☐ Abandonment
☐ Recompletion
☐ Plugging Back
☐ Casing Repair
☐ Altering Casing
☒ Other TA
☐ Change of Plans
☐ New Construction
☐ Non-Routine Fracturing
☐ Water Shut-Off
☐ Conversion to Injection
☐ Dispose Water

(Note: Report results of completion on Well Completion or Recompletion Report and Log form.)

13. Describe Proposed or Completed Operations (Clearly state all pertinent details, and give pertinent data, including estimated date of starting any proposed work. If well is directionally drilled, give subsurface locations and measured and true vertical depths for all markers and zones pertinent to this work.)

Floyd Operating Company hereby requests permission to re-classify the above captioned well from a shut-in producer to a temporarily abandoned well for an indefinite period of time. The current completion produces in non-commercial quantities; however, we are evaluating the possibility of installing a submersible pump to increase productivity. The capital investment is not warranted at current oil prices. Floyd Operating Company proposes to TA the well as follows:

- 1) Go in hole with 8 5/8" cement retainer and set at 2,850'±.
- 2) Fill hole with 2% KCL water.
- 3) Notify Commission 72 hours prior to running a casing integrity test.
- 4) Test casing to 500 psi.

14. I hereby certify that the foregoing is true and correct

Signed [Signature]

Title Manager of Production

Date 7/18/95

(This space for Federal oil-State office use)

Approved by (ORIG. SCD.) JOE G. LARA

Title PETROLEUM ENGINEER

Date 8/10/95

Conditions of approval, if any: See attached.

WELL

FIELD

DATE

SHERIDAN FEDERAL NO. 3 NORTHEAST LWSK

July 18, 95

☐ PRESENT COMPLETION☒ SUGGESTED COMPLETION

PERMANENT WELL BORE DATA

DATA ON THIS COMPLETION

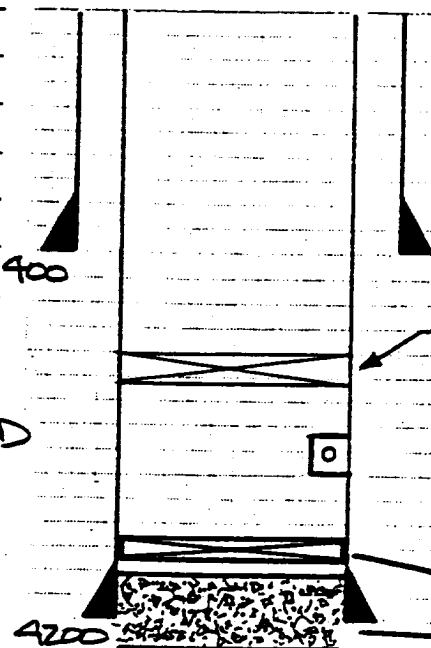
13 3/8", 48# SURF CSG
CS ± 400'. CMT'D W/
450 SKS. CIRC 25 SKS

8 5/8", 32# 24# INTER
CSG. CS ± 4200'. CMT'D
W/ TOTAL 100 SKS IN
2 STAGES. CIRC 25 SKS

CJT 4 1/2" CSG ± 7350

TOC ± 8090

4 1/2", 11.6 # 13.5 #
PROD CSG. CS ± 13049
CMT'D W/ TOTAL 950 SKS
IN 2 STAGES. TOC ± 8090



KB: 3650

GL: 3632

CIBP ± 2850

VARIES PERFS 2950-56,
2 ISF, TOTAL 13 HOLES

CIBP ± 4036

CMT PLUG 70 SKS FROM
4250 - 4038

30 SK PLUG 5635 - 5530

50 SK PLUG 7425 - 7195

CIBP ± 9650, 20' CMT AT TOP
BASE SPRINGS PERFS 9750
SD, TO 9702

CIBP ± 9850, 25' CMT AT TOP
BASE SPRINGS PERFS 9889-E
9902-04, 9920-24, 9926-28

CIBP ± 10475, 4 SKS AT TOP
WALFCAMP PERFS 10490
TO 10636

CIBP ± 12495, 25 SKS AT TOP
MORROW PERFS 12,596 TO
12 152

13049

RECEIVED

AUG 14 1965

U.S. DEPT. OF JUSTICE
FEDERAL BUREAU OF INVESTIGATION

WELL COMPLETION SKETCHES SL-5036-4-A

WELL

FIELD

DATE

SHEARN FEDERAL No. 3 NORTHEAST WYK

JULY 18, 95

☒ PRESENT COMPLETION☐ SUGGESTED COMPLETION

PERMANENT WELL BORE DATA

DATA ON THIS COMPLETION

13 3/8", 48# SURF CSG
CS ± 400'. CMT'D W/
450 SKS. CIRC 25 SKS

KB: 3650

GL: 3632

8 5/8", 32# 24# INTER
CSG. CS ± 4200'. CMT'D
W/ TOTAL 1000 SKS IN
2 STAGES. CIRC 25 SKS

VATES PERFS 2950-56,
2 STAGE, TOTAL 13 HOLES

CIBP ± 4036

CMT RWG 70 SKS FROM
4250 - 4038

30 SK RWG 5675 - 5530

50 SK RWG 7425 - 7195

CMT 4 1/2" CSG ± 7350

TOC ± 8090

CIBP ± 9650, 20' CMT AFTER
BASE SPRINGS PERFS 9750-
50, TO 9702

CIBP ± 9850, 25' CMT AFTER
BASE SPRINGS PERFS 9884-88
9902-04, 9920-24, 9926-28

CIBP ± 10475, 4 SKS AFTER
WOLF CAMP PERFS 10490
TO 10636

CIBP ± 12495, 25 SKS AFTER
MORRISON PERFS 12,596 TO
12,752

4 1/2", 11.6 # 13.5 #
PROD CSG. CS ± 13049
CMT'D W/ TOTAL 950 SKS
IN 2 STAGES. TOC ± 8090

13049

RECEIVED

NOV 11 1995

NOV 11 1995

OFFICE

(Rev: 1/12/95)

BUREAU OF LAND MANAGEMENT
CARLSBAD RESOURCE AREA

Temporary Abandonment of Wells on Federal Lands

Conditions of Approval

Temporary Abandonment (TA) status approval requires: A) Successful Casing Integrity Test and, B) Successful Bradenhead Test.

Any temporary abandonment request must be submitted on a Sundry Notice (Form 3160-5), one (1) original signature and five (5) copies, and include the following:

1. Justification why the well should be temporarily abandoned rather than permanently plugged and abandoned.
2. Description of the temporary abandonment procedure.
3. A complete wellbore diagram shown as temporarily abandoned.
4. The anticipated date the operations will occur.

Contact the appropriate BLM office at least 48 hours prior to the scheduled Casing Integrity and the Bradenhead Tests. For wells in Eddy County call (505) 887-6544 ; for wells in Lea County call (505) 393-3612.

A) Casing Integrity Test for TA:

1. Install an isolation device (such as a retainer or bridge plug) within 50' to 100' of the top perforation or cement plug that extends at least 50' above each set of open perforations. Unless prior approval is granted by the Authorized Officer, fill the well bore with conditioned, non-corrosive fluid and shut-in at the surface. If a cement plug is used, the top of the cement must be verified by tagging. If the wellbore had more than one producing horizon, the lower set(s) of perforations or open hole must meet the requirements for permanent plug to abandonment, unless justification is provided by the operator not to do so.

2. A test demonstrating casing mechanical integrity is required. An approved method is a pressure test of the casing and uppermost plug. The pressure test conducted shall be a minimum of 500 psi surface pressure with less than 10 percent pressure drop within thirty (30) minutes. In no event shall the pressure test required exceed seventy (70) percent of the internal yield of the casing. In the case of an unsuccessful test, the operator shall either correct the problem or plan to plug and abandon the well. Alternative methods demonstrating casing mechanical integrity may be approved by the Authorized Officer on a case-by-case basis.

B) Bradenhead Test for TA:

1. Record the pressure measured on each casing string, including intermediate casing, using deadweight or calibrated pressure gauge.

2. Open the bradenhead valve to the atmosphere. If gas or water flow is observed or indicated, flow the bradenhead for a minimum of fifteen (15) minutes and record pressures at five (5) minute intervals on the production, intermediate and surface casing. Describe in detail any fluids flowing from the bradenhead including measured or estimated rates of flow. A water and/or gas analysis may be required.

Wells that successfully pass the casing integrity test and the bradenhead test will be approved for Temporary Abandonment (TA) status for 12 months provided that the operator:

1. Submits within thirty (30) days a subsequent Sundry Notice (one (1) original signature and five (5) copies) requesting TA approval,

2. Attaches a clear copy or the original of the pressure test charts,

If the well does not pass the casing integrity test and/or the bradenhead test, then the operator shall within 90 days submit to BLM for approval one of the following:

1. A procedure to repair the casing so that a TA approval can be granted.
2. A procedure to plug and abandon the well.