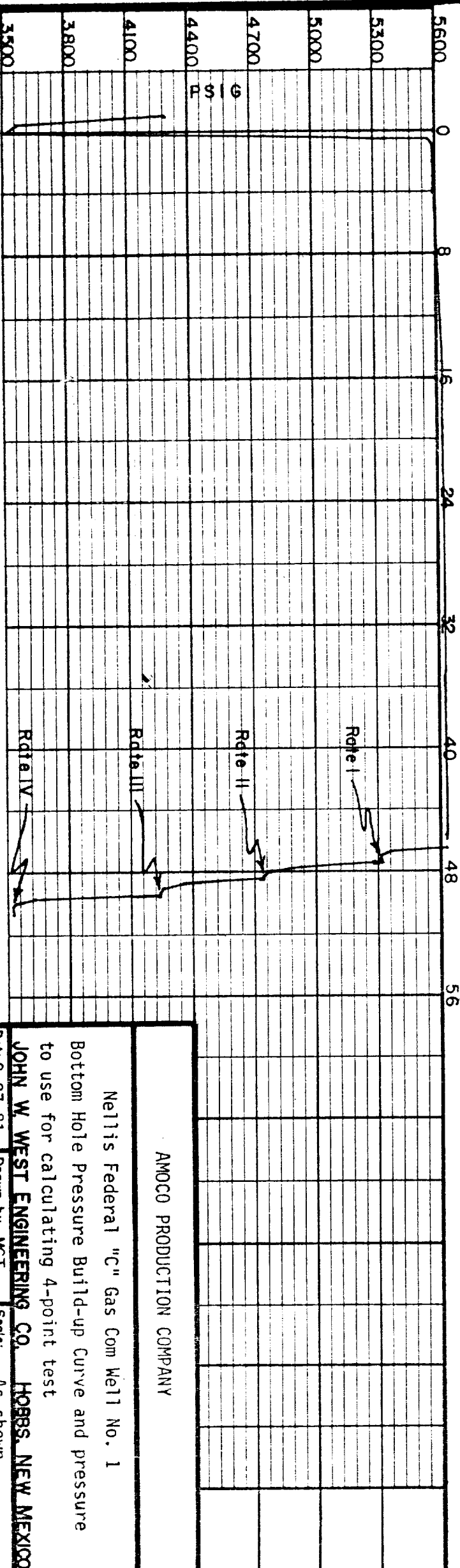


Test Date: February 24 to 26, 1981
Test Depth: 13,586 feet

Element No.: 18449
Range: 0-8050 psi
Clock No.: 22507
Range: 0-72 Hour

Note: See tabulation of Pressure and Time on attached sheet.

TIME-IN HOURS



AMOCO PRODUCTION COMPANY

Netlis Federal "C" Gas Com Well No. 1

Bottom Hole Pressure Build-up Curve and pressure
to use for calculating 4-point test

JOHN W. WEST ENGINEERING CO. HOBBBS, NEW MEXICO

Date: 2-27-81 Drawn by: MCT Scale: AS Shown