

30-025-26820

NO. OF COPIES RECEIVED	
DISTRIBUTION	
SANTA FE	
FILE	
U.S.G.S.	
LAND OFFICE	
OPERATOR	

NEW MEXICO OIL CONSERVATION COMMISSION

Form 7-101
Revised 1-1-65

1. Indicate Type of Lease	
STATE <input checked="" type="checkbox"/>	FEE <input type="checkbox"/>
2. Pre Oil & Gas Lease No.	

APPLICATION FOR PERMIT TO DRILL, DEEPEN OR PLUG BACK

1a. Type of Work		7. Unit Agreement Name	
b. Type of Well OIL WELL <input checked="" type="checkbox"/> GAS WELL <input type="checkbox"/> OTHER <input type="checkbox"/>		8. Farm or Lease Name Central Vac. Unit	
2. Name of Operator Texaco Inc.		9. Well No. 152	
3. Address of Operator Box 3109 - Midland, Texas 79702		10. Field and Pool, or Wildcat Grayburg-San Andres	
4. Location of Well UNIT LETTER M LOCATED 760 FEET FROM THE south LINE AND 660 FEET FROM THE west LINE OF THE 6 18-S 35-E		11. County Lea	
21. Elevations (Show whether D.R., etc.) 3992' Gr.		20. Rotary or C.T. 4742' Vac-San Andres Rotary	
22. Approx. Date Work will start May 26, 1980			

PROPOSED CASING AND CEMENT PROGRAM

SIZE OF HOLE	SIZE OF CASING	WEIGHT PER FOOT	SETTING DEPTH	SACKS OF CEMENT	EST. TOP
20"	16"	65# H-40 STC	350'	450	Circulate
15"	11-3/4"	42# H-40 STC	1440'	1200	Circulate
11"	8-5/8"	28# H-40 STC	1440'	600 -1st stg	Circulate
		28# S-80 STC	1300'	450 -2n stg	Circulate
7-7/8"	5-1/2"	15.5#K-55 STC	4742'	1200	Circulate

Surface Casing: 450 sxs. Class "C" w/2% CaCl₂ (14.8 ppg, 1.32 ft³/sx)

1st Intermediate Csg.: 1200 sxs. Class "C" w/2% CaCl₂ (14.8 ppg, 1.32 ft³/sx)

2nd Intermediate Csg.: 1st Stage: 300 sxs. Class "C" Neat (14.8 ppg, 1.32 ft³/sx)
followed by 300 sxs. Class "C" w/2% CaCl₂ (14.8 ppg, 1.32 ft³/sx).

2nd Stage: 450 sxs. Class "C" w/2% CaCl₂ (14.8 ppg, 1.32 ft³/sx)

Production Csg.: 1200 sxs. Class "C" w/0.6% Halad 9, 0.3% CFR-2, 1/4# Flocele/sx. (14.8 ppg, 1.32 ft³/sx).

IN ABOVE SPACE DESCRIBE PROPOSED PROGRAM, IF ANY, AS TO PRODUCTION, CONFINEMENT, OR OTHER PRODUCTIVE ZONE AND PROPOSED NEW PRODUCTION ZONE. GIVE SCHEDULED CEMENT PROGRAM, IF ANY.

I hereby certify that the information above is true and correct.

Signed: *[Signature]*

Assistant Division
Petroleum Engineer

May 20, 1980

This space for State Use

APPROVED BY

CONDITIONS OF APPROVAL, IF ANY:

FILED

SUPERVISOR DISTRICT

DATE

MAY 22 1980

NEW MEXICO OIL CONSERVATION COMMISSION
WELL LOCATION AND ACREAGE DEDICATION PLAT

Form C-102
Supersedes C-128
Effective 1-1-65

All distances must be from the outer boundaries of the Section.

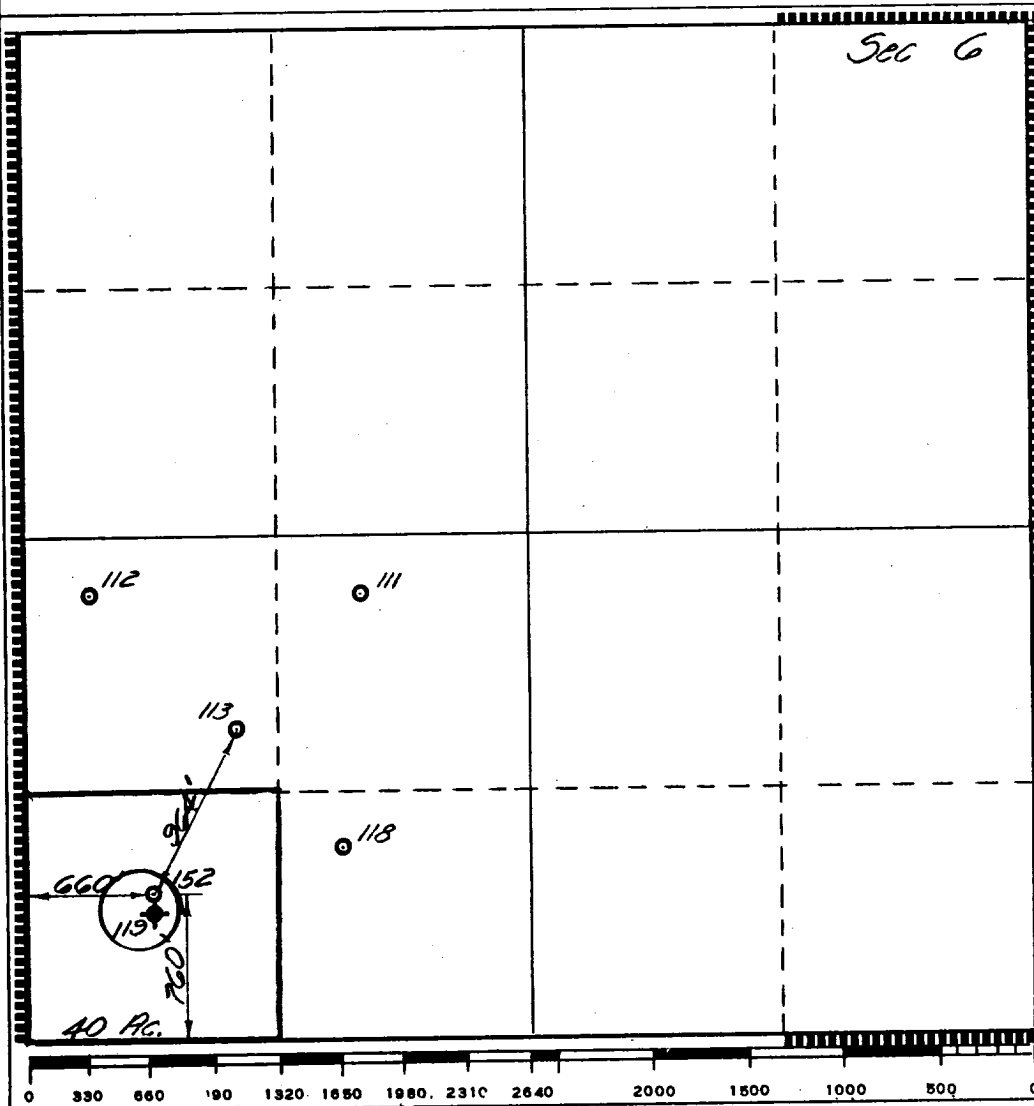
Operator Texaco Inc.			Lease Central Vacuum Unit		Well No. 152
Unit Letter M	Section 6	Township 18-S	Range 35-E	County Lea	
Actual Footage Location of Well: 760 feet from the south line and 660 feet from the west line					
Ground Level Elev: 3992'	Producing Formation Vacuum-San Andres		Pool Vacuum (Grayburg-San Andres)		Dedicated Acreage: 40 Acres

1. Outline the acreage dedicated to the subject well by colored pencil or hachure marks on the plat below.
2. If more than one lease is dedicated to the well, outline each and identify the ownership thereof (both as to working interest and royalty).
3. If more than one lease of different ownership is dedicated to the well, have the interests of all owners been consolidated by communitization, unitization, force-pooling, etc?

☐ Yes ☐ No If answer is "yes," type of consolidation _____

If answer is "no," list the owners and tract descriptions which have actually been consolidated. (Use reverse side of this form if necessary.) _____

No allowable will be assigned to the well until all interests have been consolidated (by communitization, unitization, forced-pooling, or otherwise) or until a non-standard unit, eliminating such interests, has been approved by the Commission.



CERTIFICATION

I hereby certify that the information contained herein is true and complete to the best of my knowledge and belief.

B. L. Eiland

Name
B. L. Eiland

Position
Division Surveyor

Company
Texaco Inc.

Date
May 20, 1980

I hereby certify that the well location shown on this plat was plotted from field notes of actual surveys made by me or under my supervision, and that the same is true and correct to the best of my knowledge and belief.

Date Surveyed
May 20, 1980

Registered Professional Engineer and/or Land Surveyor

B. L. Eiland
B. L. Eiland

Certificate No.
4386

RECEIVED

MAY 21 1980

OIL CONSERVATION DIV.

173