

UNITED STATES
DEPARTMENT OF THE INTERIOR
BUREAU OF LAND MANAGEMENT

APPLICATION FOR PERMIT TO DRILL, DEEPEN, OR PLUG BACK

1a. TYPE OF WORK

DRILL ☐

DEEPEN ☐

PLUG BACK ☒

b. TYPE OF WELL

OIL
WELL ☒

GAS
WELL ☐

OTHER

SINGLE
ZONE ☒

MULTIPLE
ZONE ☐

2. NAME OF OPERATOR

Amoco Production Company Rm. 16.108

3. ADDRESS OF OPERATOR

P.O. Box 3092 Houston Tx 77253

4. LOCATION OF WELL (Report location clearly and in accordance with any State requirements.)*

At surface 660' FSL X 2130' FEL (Unit 0, SW/4, SE/4)

At proposed prod. zone

14. DISTANCE IN MILES AND DIRECTION FROM NEAREST TOWN OR POST OFFICE*

55.7 miles south of Hobbs, NM

15. DISTANCE FROM PROPOSED*

LOCATION TO NEAREST
PROPERTY OR LEASE LINE, FT.
(Also to nearest drig. unit line, if any)

16. NO. OF ACRES IN LEASE

17. NO. OF ACRES ASSIGNED
TO THIS WELL

40

18. DISTANCE FROM PROPOSED LOCATION*
TO NEAREST WELL, DRILLING, COMPLETED,
OR APPLIED FOR, ON THIS LEASE, FT.

19. PROPOSED DEPTH

13665'

20. ROTARY OR CABLE TOOLS

21. ELEVATIONS (Show whether DF, RT, GR, etc.)

3738.6 GR

22. APPROX. DATE WORK WILL START*

ASAP

23. PROPOSED CASING AND CEMENTING PROGRAM

SIZE OF HOLE	SIZE OF CASING	WEIGHT PER FOOT	SETTING DEPTH	QUANTITY OF CEMENT
17 1/2"	13 3/8"	48	438'	500 SX Class-C-
12 1/4"	9 5/8"	40	5000'	2500 SX Lite, 3000 SX Class-C-
8 3/4"	5 1/2"	17, 20, 23	11428'	1700 SX Lite

Recomplete from the Corbin Wolfcamp, South to the ~~Buffalo~~ ^{South Corbin} Queen
MIXRUSU X POH w/ 500' OF 2 3/8" KILL STRING X RIH W/ 2 7/8" WORKSTRING X
CIRCULATE CLEAN w/ KCL WATER
RUN CORRELATION LOG FROM 5000' TO 4000'

PERFORATE 4449' - 4467' @ 4 JSPP W/ CASING GUN AT 90 OR 120
DEGREE PHASING.

RIH W/ TBG X PKR. SET PKR AT APPROX 4350' X LOAD BACKSIDE
BREAK' DOWN PERFS W/ 1000 GALS 7 1/2% NEFE HCL X SWAB BACK LOAD
FRAC DOWN TBG @ 12 BPM X SWB TO TEST X RETURN TO PRODUCTION

IN ABOVE SPACE DESCRIBE PROPOSED PROGRAM: If proposal is to deepen or plug back, give data on present productive zone and proposed new productive zone. If proposal is to drill or deepen directionally, give pertinent data on subsurface locations and measured and true vertical depths. Give blowout preventer program, if any.

24.

SIGNED

H. J. Black (H. J. Black)

TITLE Stt. Admin. Analyst

DATE 10-23-92

(This space for Federal or State office use)

PERMIT NO.

APPROVAL DATE

APPROVED BY

TITLE

DATE 11/3/92

CONDITIONS OF APPROVAL, IF ANY:

*See Instructions On Reverse Side

NEW MEXICO OIL CONSERVATION COMMISSION
WELL LOCATION AND ACREAGE DEDICATION PLAT

Form 1-77
Supersedes 0-127
Effective 1-1-77

All distances must be from the outer boundaries of the Section

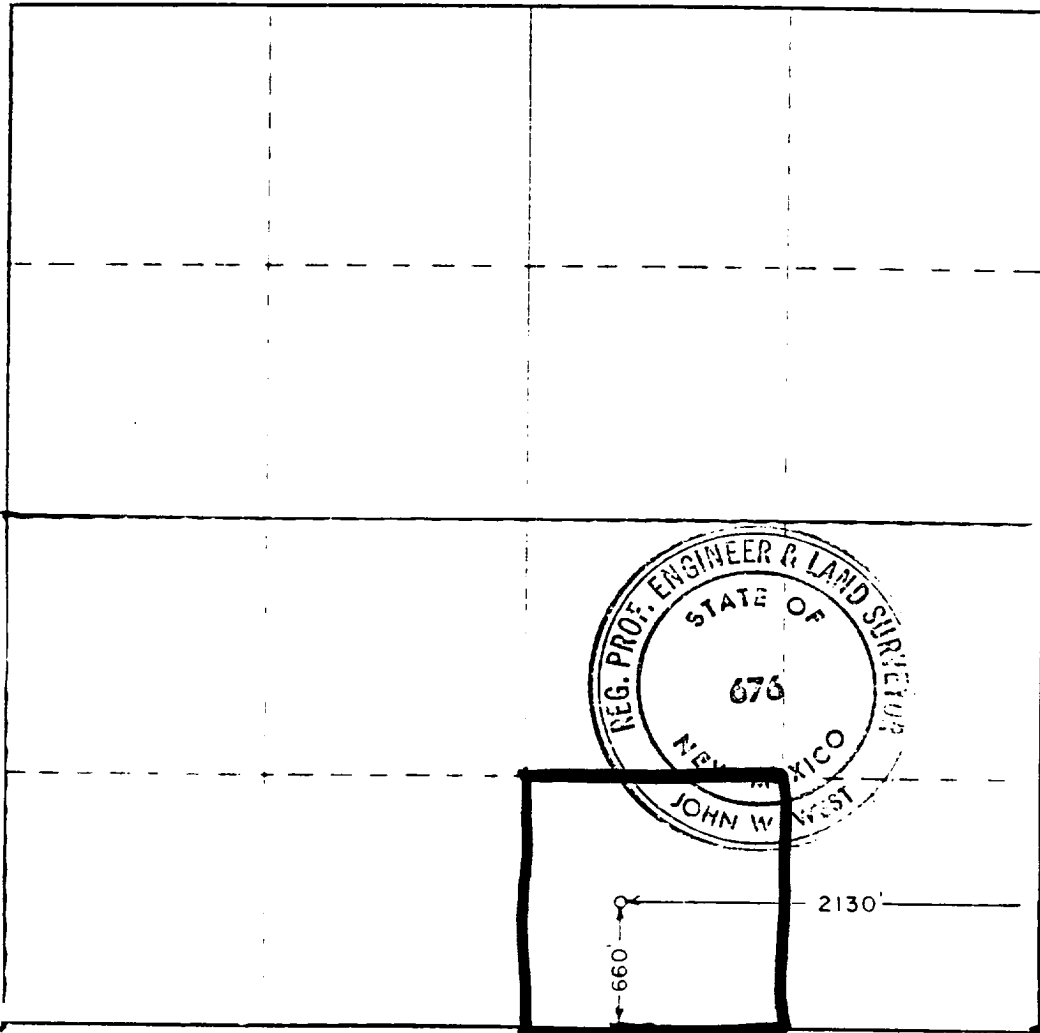
Amoco Production Company		Federal AB		1
0	33	18 South	33 East	Lea
660	South	2130	East	
3738.6	Queen	South Corbin Buffalo Queen		40

- 1 Outline the acreage dedicated to the subject well by colored pencil or hatchure marks on the plat below.
- 2 If more than one lease is dedicated to the well, outline each and identify the ownership thereof (both as to working interest and royalty).
- 3 If more than one lease of different ownership is dedicated to the well, have the interests of all owners been consolidated by communitization, unitization, force-pooling, etc?

☐ Yes ☐ No If answer is "yes," type of consolidation _____

If answer is "no," list the owners and tract descriptions which have actually been consolidated (use reverse side of this form if necessary.) _____

No allowable will be assigned to the well until all interests have been consolidated (by communitization, unitization, forced-pooling, or otherwise) or until a non-standard unit, eliminating such interests, has been approved by the Commission.



CERTIFICATION

I hereby certify that the information contained herein is true and complete to the best of my knowledge and belief

H. J. Benn

St. Admin. Analyst

Amoco Production Company

10 - 23 - 92

I hereby certify that the well location shown on this plat was plotted from field notes of actual surveys made by me or under my supervision and that the same is true and correct to the best of my knowledge and belief

June 7, 1979

Registered Professional Engineer
and State Surveyor

John W. West

Certificate No. John W. West 676
Ronald J. Eidson 3239

330 660 990 1320 1650 1980 2310 2640 2970 3300 3630 3960 4290 4620 4950 5280 5610 5940 6270 6600