

NEW MEXICO OIL CONSERVATION COMMISSION
WEI LOCATION AND ACREAGE DEDICATION LAT

Form C-102
Supersedes C-128
Effective 1-1-65

All distances must be from the outer boundaries of the Section

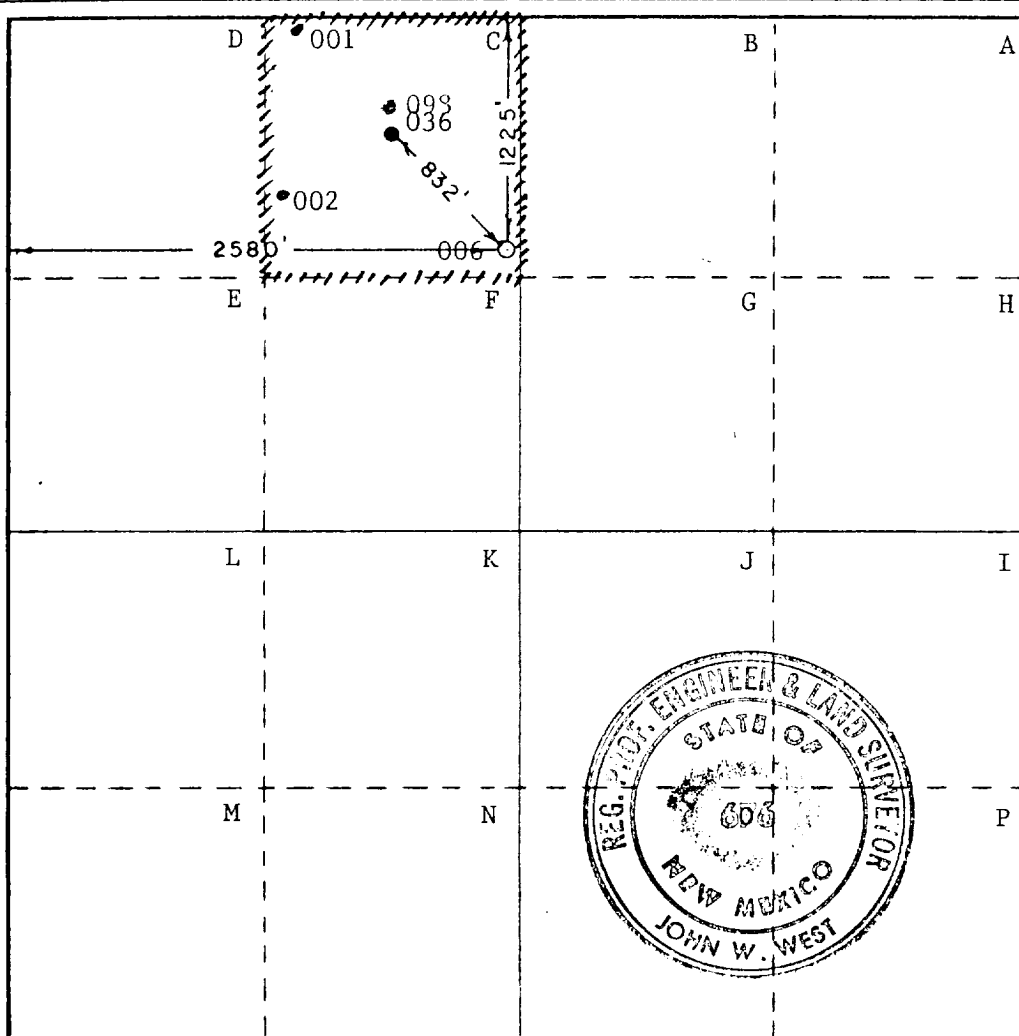
Operator Phillips Petroleum Company			Lease E.V.G.S.A.U. UNIT TRACT #0524		Well No. 006
Unit Letter C	Section 5	Township T-18 South	Range R-35 East	County Lea	
Actual Footage Location of Well: 1225 feet from the North line and 2580 feet from the West line					
Ground Level Elev. 3957.3	Producing Formation Gb/SA		Pool Vacuum Gb/SA		Dedicated Acreage: 40 Acres

1. Outline the acreage dedicated to the subject well by colored pencil or hachure marks on the plat below.
2. If more than one lease is dedicated to the well, outline each and identify the ownership thereof (both as to working interest and royalty).
3. If more than one lease of different ownership is dedicated to the well, have the interests of all owners been consolidated by communitization, unitization, force-pooling, etc?

☐ Yes ☐ No If answer is "yes," type of consolidation _____

If answer is "no," list the owners and tract descriptions which have actually been consolidated. (Use reverse side of this form if necessary.) _____

No allowable will be assigned to the well until all interests have been consolidated (by communitization, unitization, forced-pooling, or otherwise) or until a non-standard unit, eliminating such interests, has been approved by the Commission.



CERTIFICATION

I hereby certify that the information contained herein is true and complete to the best of my knowledge and belief.

W. J. Mueller
Signature

W. J. MUELLER

Position

SR. ENGINEERING SPECIALIST

Company

PHILLIPS PETROLEUM COMPANY

Date

7-10-80

I hereby certify that the well location shown on this plat was plotted from field notes of actual surveys made by me or under my supervision, and that the same is true and correct to the best of my knowledge and belief.

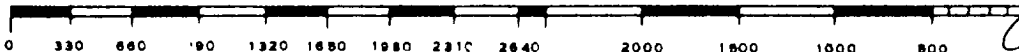
Date Surveyed

June 18, 1980

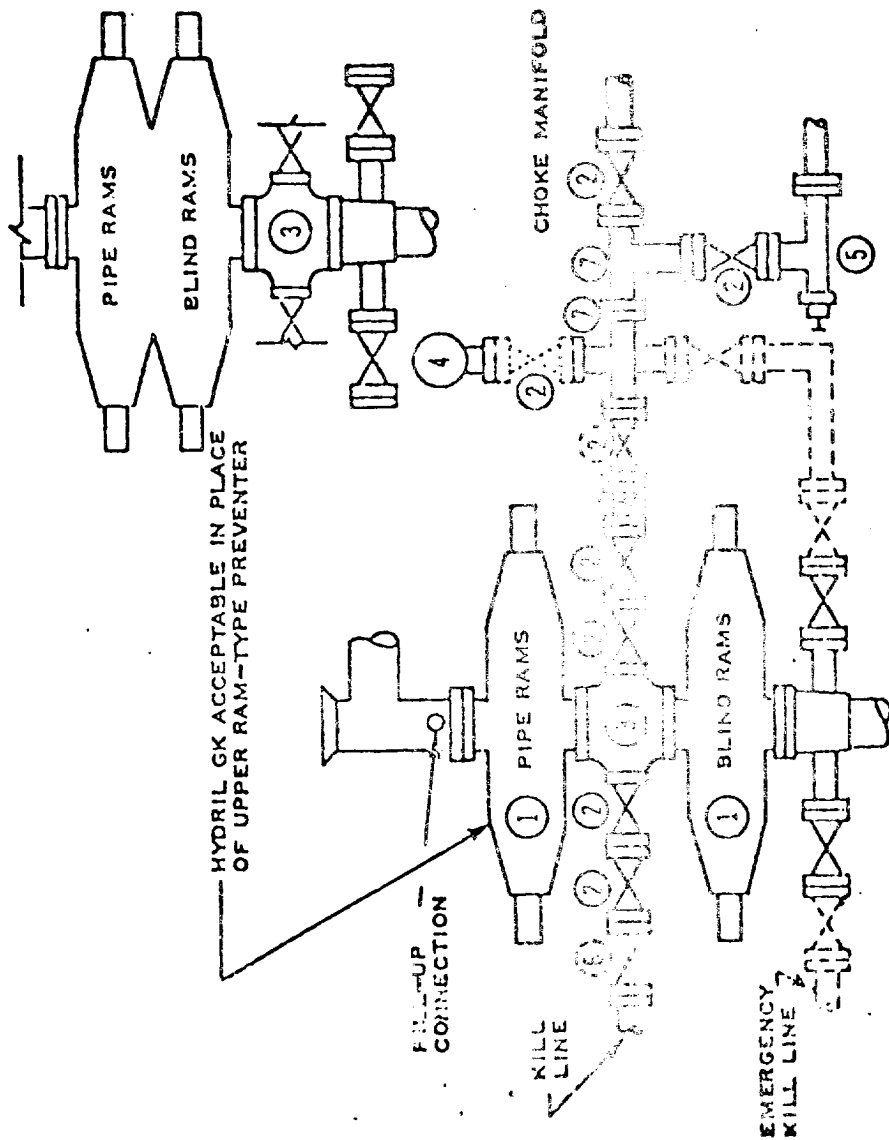
Registered Professional Engineer and/or Land Surveyor

John W. West
Signature

Certificate No. **JOHN W. WEST 878**
PATRICK A. ROMERO 8868
Ronald J. Eldson 3239



DOUBLE PREVENTER OPTION



- ① SERIES 900 RAM-TYPE BOP
- ② 2" SERIES 900 VALVE
- ③ SERIES 900 DRILLING SPOOL
- ④ 2" MUD PRESSURE GAUGE
- ⑤ 2" SERIES 900 CHOKE
- ⑥ 2" SERIES 900 CHECK VALVE
- ⑦ 2" SERIES 900 STEEL TEE

NOTES:

1. 3000 PSI WP CLAMP
HOUS MAY BE SUBSTITUTED
FOR FLANGES

2. VALVES MAY BE EITHER HAND OR POWER
OPERATED BUT, IF POWER OPERATED,
THE VALVES FLANGED TO THE BOP RUN
MUST BE CAPABLE OF BEING OPENED AND
CLOSED MANUALLY OR CLOSE ON POWER
FAILURE AND BE CAPABLE OF BEING
OPENED MANUALLY

..... OPTIONAL EQUIPMENT

PHILLIPS PETROLEUM COMPANY

3000 PSI WORKING PRESSURE
BLOWOUT PREVENTER HOOK-UP
(SERIES 900 FLANGES OR BETTER