

UNI
DEPARTMENT
BUREAU O

OPER. CORID NO 26485
PROPERTY NO. 14367
POOL CODE 27200
EFF. DATE 12/9/97
AM. NO. 30-D25-27017

FORM APPROVED
OMB NO. 1004-0136
Expires: February 28, 1995

APPLICATION FOR

1a. TYPE OF WORK

DRILL ☒ Re-Entry DEEPEN ☐

b. TYPE OF WELL

OIL WELL ☒ GAS WELL ☐ OTHER ☐

SINGLE ZONE ☒ MULTIPLE ZONE ☐

2. NAME OF OPERATOR

BURLINGTON RESOURCES OIL & GAS COMPANY

3. ADDRESS AND TELEPHONE NO.

P.O. Box 51810 Midland, TX 79710-1810

915-688-6906

4. LOCATION OF WELL (Report location clearly and in accordance with any State regulations.)
At surface

E, 1980' FNL & 660' FWL, SEC. 26, T19S, R32E
At proposed prod. zone

F, 1980' FNL & 2310' FWL, SEC. 26, T19S, R32E

14. DISTANCE IN MILES AND DIRECTION FROM NEAREST TOWN OR POST OFFICE

15. DISTANCE FROM PROPOSED*

LOCATION TO NEAREST
PROPERTY OR LEASE LINE, FT.
(Also to nearest drlg. unit line, if any) 660'

18. DISTANCE FROM PROPOSED LOCATION*
TO NEAREST WELL, DRILLING, COMPLETED,
OR APPLIED FOR, ON THIS LEASE, FT. 1ST WELL

21. ELEVATIONS (Show whether DF, RT, GR, etc.)

3581.8 GR

16. NO. OF ACRES IN LEASE

320

17. NO. OF ACRES ASSIGNED
TO THIS WELL

320

19. PROPOSED DEPTH

12,540' MD, 11,060' TVD

20. ROTARY OR CABLE TOOLS

ROTARY

22. APPROX. DATE WORK WILL START*

11/97

23. PROPOSED CASING AND CEMENTING PROGRAM

SIZE OF HOLE	GRADE, SIZE OF CASING	WEIGHT PER FOOT	SETTING DEPTH	QUANTITY OF CEMENT
17-1/2	13-3/8"	48#	512'	475 SXS C TO SURFACE <u>EXISTING</u>
12-1/4"	9-5/8"	40#	5745'	1935 SXS LITE & C TO SURFACE <u>EXISTING</u>
8-3/4"	5-1/2"	17#.20# & 23#	13520'	2550 SXS LITE & H, TOC @3055' <u>EXISTING</u>

RE-ENTRY OF A PLUGGED AND ABANDONED WELL AND SIDETRACK A LATERAL HOLE FROM THE EXISTING VERTICAL HOLE. THIS FORM IS TO REPLACE PREVIOUSLY SUBMITTED SUNDRY DATED 11-14-97 AS PER CONVERSATION WITH MR. DAVID GLASS.

PLANS ARE TO DRILL OUT ALL EXISTING CEMENT PLUGS & CIBP'S. ALL EXISTING DELAWARE AND BONE SPRINGS PERFS WILL BE CMT SQZD. WILL TIE BACK WITH 5-1/2" 17# N-80 CSG TO SURF. 5-1/2" CSG PREVIOUS CUT AT AND PULLED AT 2980'. A GYRO SURVEY WILL BE RUN TO DETERMINE ACTUAL VERTICAL BOTTOM HOLE LOCATION PRIOR TO COMMENCING SIDETRACK HORIZONTAL DRAINHOLE.

THE DRILLING PAD AND ROAD STILL EXIST AT THIS LOCATION. DRILLING PLAN AND SURFACE USE PLAN PREVIOUSLY MAILED IN. PLEASE ATTACH THIS FORM TO THE PREVIOUSLY SUBMITTED ATTACHMENTS.

IN ABOVE SPACE DESCRIBE PROPOSED PROGRAM: If proposal is to deepen, give data on present productive zone and proposed new productive zone. If proposal is to drill or deepen directionally, give pertinent data on subsurface locations and measured and true vertical depths. Give blowout preventer program, if any.

24.

SIGNED

Maria L. Perez

TITLE REGULATORY REPRESENTATIVE

DATE 11-18-97

(This space for Federal or State office use)

PERMIT NO. _____

APPROVAL DATE _____

Application approval does not warrant or certify that the applicant holds legal or equitable title to those rights in the subject lease which would entitle the applicant to conduct operations thereon.

CONDITIONS OF APPROVAL, IF ANY:

APPROVED BY

Richard A. Whitley

TITLE

Acting State Director

DATE

11/26/97

*See Instructions On Reverse Side

Title 18 U.S.C. Section 1001, makes it a crime for any person knowingly and willfully to make to any department or agency of the United States any false, fictitious or fraudulent statements or representations as to any matter within its jurisdiction.

RECEIVED
1997 NOV 19 4 8 21
BUREAU OF LAND MGMT.
ROSWELL OFFICE

UNITED STATES
DEPARTMENT OF THE INTERIOR
BUREAU OF LAND MANAGEMENT

FORM APPROVED
Budget Bureau No. 1004-0135
Expires: March 31, 1993

SUNDRY NOTICES AND REPORTS ON WELLS

Do not use this form for proposals to drill or to deepen or reentry to a different reservoir.

Use "APPLICATION FOR PERMIT - " for such proposals

SUBMIT IN TRIPLICATE

1. Type of Well
☒ Oil Well ☐ Gas Well ☐ Other

2. Name of Operator

BURLINGTON RESOURCES OIL & GAS COMPANY

3. Address and Telephone No.

P. O. BOX 51810, MIDLAND, TEXAS 79710-1810 915-688-6906

4. Location of Well (Footage, Sec., T., R., M., or Survey Description)

E, 1980' FNL & 660' FWL, SEC. 26, T19S, R32E

5. Lease Designation and Serial No.

NM12412

6. If Indian, Allottee or Tribe Name

7. If Unit or CA, Agreement Designation

8. Well Name and No.

FEDERAL "AW" #1

9. API Well No.

30-025-27017

10. Field and Pool, or exploratory Area

GEM WOLFCAMP

11. County or Parish, State

LEA COUNTY NM

12. CHECK APPROPRIATE BOX(s) TO INDICATE NATURE OF NOTICE, REPORT, OR OTHER DATA

TYPE OF SUBMISSION

☒ Notice of Intent

☐ Subsequent Report

☐ Final Abandonment Notice

TYPE OF ACTION

☐ Abandonment

☐ Recompletion

☐ Plugging Back

☐ Casing Repair

☐ Altering Casing

☒ Other RE-ENTER P&A'D WELL &

SIDETRACK LATERAL DRAINHOLE

☐ Change of Plans

☐ New Construction

☐ Non-Routine Fracturing

☐ Water Shut-Off

☐ Conversion to Injection

☐ Dispose Water

(Note: Report results of multiple completion on Well Completion or Recompletion Report and Log form.)

13. Describe Proposed or Completed Operations (Clearly state all pertinent details, and give pertinent dates, including estimated date of starting any proposed work. If well is directionally drilled, give subsurface locations and measured and true vertical depths for all markers and zones pertinent to this work.)*

BURLINGTON RESOURCES REQUESTS APPROVAL TO RE-ENTER THIS PLUGGED AND ABANDONED WELL AND SIDETRACK AN OPEN HOLE LATERAL DRAINHOLE FROM THE EXISTING VERTICAL WELLBORE.

PROPOSED PLANS ARE TO DRILL OUT ALL EXISTING CEMENT PLUGS AND CAST IRON BRIDGE PLUGS. ALL EXISTING DELAWARE AND BONE SPRING PERFS WILL BE CEMENT SQUEEZED. PLANS ARE TO TIE BACK WITH 5-1/2" 17# N-80 CASING TO SURFACE. 5-1/2" CASING IN THIS WELLBORE WAS PREVIOUS CUT AND PULL AT 2980'. A GYRO SURVEY WILL BE RUN TO DETERMINE ACTUAL VERTICAL BOTTOM HOLE LOCATION PRIOR TO COMMENCING SIDETRACK HORIZONTAL DRAINHOLE.

THIS WELL WAS DRILLED, COMPLETED & PARTIALLY PLUGGED BACK BY AMOCO PRODUCTION CO. WELL WAS P&A'D TO SURFACE IN 1992. IN TALKING TO MR. PETER CHESTER WITH THE BLM, HE WAS UNABLE TO LOCATE A COPY OF THE SUBSEQUENT PLUGGING REPORT. I HAVE ATTACHED ANOTHER SUNDRY TO REPORT THE PLUG AND ABANDONMENT OF THIS WELLBORE WITH A WELLBORE SKETCH SHOWING THE PLUGS.

THE DRILLING PAD AND ROADS STILL EXIST AT THIS LOCATION AND THEREFORE DOES NOT REQUIRE A SURFACE USE PLAN. BURLINGTON REQUESTS APPROVAL TO START THIS WORK BY NEXT WEEK. ORIGINAL AND APPROPRIATE COPIES OF THESE SUNDRIES ARE IN THE MAIL TO YOU TODAY.

14. I hereby certify that the foregoing is true and correct

Signed Maria L. Perry

Title REGULATORY REPRESENTATIVE

Date 11-14-97

(This space for Federal or State office use)

Approved by _____

Title _____

Date _____

Conditions of approval, if any:

RECEIVED

1947 NOV 18 A 9:38

BUREAU OF LAND MGMT.
ROSWELL OFFICE

Submit to Appropriate District Office
State Lease - 4 Copies
Fee Lease - 3 Copies

☐ AMENDED REPORT

WELL LOCATION AND ACREAGE DEDICATION PLAT

¹ API Number 30-025-27017		² Pool Code 27200	³ Pool Name GEM WOLFCAMP	
⁴ Property Code 014367	⁵ Property Name FEDERAL "AW"			⁶ Well Number 1
⁷ OGRID No. 26485	⁸ Operator Name BURLINGTON RESOURCES OIL & GAS COMPANY			⁹ Elevation 3581.8'

10 Surface Location

UL or lot no.	Section	Township	Range	Lot. Idn	Feet from the	North/South Line	Feet from the	East/West line	County
E	26	19S	32E		1980	NORTH	660	WEST	LEA

11 Bottom Hole Location If Different From Surface

UL or lot no. F	Section 26	Township 19S	Range 32E	Lot. Idn	Feet from the 1980	North/South Line NORTH	Feet from the 2310	East/West line WEST	County LEA
¹² Dedicated Acres	¹³ Joint or Infill	¹⁴ Consolidation Code		¹⁵ Order No.					

NO ALLOWABLE WILL BE ASSIGNED TO THIS COMPLETION UNTIL ALL INTERESTS HAVE BEEN CONSOLIDATED
OR A NON--STANDARD UNIT HAS BEEN APPROVED BY THE DIVISION

320 Acre Horizontal Project Area with a 330' Setback

Burlington Resources has the rights to produce the Wolfcamp Pool within the assigned horizontal project area.

26

17 OPERATOR CERTIFICATION

I hereby certify that the information contained herein is true and complete to the best of my knowledge and belief.

Signature Maria L. Perez

Printed Name MARIA L. PEREZ

Title REGULATORY REPRESENTATIVE

Date 11-14-97

18 SURVEYOR CERTIFICATION

I hereby certify that the well location shown on this plat was plotted from field notes of actual surveys made by me or under my supervision, and that the same is true and correct to the best of my belief.

Date of Survey _____

Signature and Seal of Professional Surveyer: _____

Certificate Number _____

OPERATORS NAME:	Burlington Resources Oil & Gas Company
LEASE NAME AND WELL NO.:	Federak "AW" #1
LOCATION:	E, 1980' FNL & 660' FWL, Sec. 26, T19S, R32E
FIELD NAME:	Gem Wolfcamp
COUNTY:	Lea County, New Mexico
LEASE NUMBER:	NM 12412

The following information is to supplement BLM form 3160-3 Application for permit to drill in accordance with Onshore Oil and Gas Order No. 1:

9 - POINT DRILLING PLAN

1. Name and estimated tops of important geologic formation/marker horizons.

	<u>DEPTH</u>
Delaware	5910'
Bone Springs	7566'
Wolfcamp	10,796'
Strawn	11,956'
Atoka	12,305'
Morrow	12,572'

2. Estimated depths at which the top and bottom of formations potentially containing usable water, oil, gas, or prospectively valuable deposits of other minerals are expected to be encountered and the operator's plans for protecting such resources.

Wolfcamp	10,796
----------	--------

3. The operator's minimum specifications for Blowout Preventer (BOP) and related equipment to be used and schematic diagrams thereof showing sizes, pressure ratings, and the testing procedures and testing frequency. BOP and BOP - related equipment (BOPE) schematics shall include schematics of choke manifold equipment. Accumulator systems and remote controls shall be utilized.

7 1/16" BOP flange system. Tested to 3000 psi.

4. The proposed casing program including size, grade, weights, type of thread and coupling, and the setting depth of each string and its condition (new or acceptably reconditioned). For exploratory wells, or for wells as otherwise specified by the authorized officer, the operator shall include the minimum design factors for tensions, burst, and collapse that are incorporated into the casing design. In cases where tapered casing strings are utilized, the operator shall also include and/or setting depths of each portion.

EXISTING CASING:

17 1/2" hole, 13 3/8" 48# csg, set @ 512'

12 1/4" hole, 9 5/8" 40# csg, set @ 5745'

8 3/4" hole, 5 1/2" 17#, 20# & 23#csg, set @ 13,520'.
5-1/2" was cut at 2980' and pulled on 2-4-92.

OPEN HOLE LATERAL:

Estimated Kick-off point 10,780', 90 degree Azimuth, Final Inc 86.5 Deg.
Length of lateral is to be an estimated 1800'+/-, 4-5/8" open hole.. Target MD 12,540', TVD 11,060'.

5. The amount and type(s) of cement, including anticipated additives to be used in setting each casing string, shall be described. If stage cementing techniques are to be employed, the setting depth of the stage collars and amount and type of cement, including additives, and preflush amounts to be used in each stage, shall be given. The expected linear fill-up of each cemented string, or each stage when utilizing stage-cementing techniques, shall also be given.

EXISTING CEMENT:

- a. 13 3/8" csg: Cmt'd w/475 sxs 'C' + 1% Cacl.
Circ'd 120 sxs cmt to surface.
- b. 9 5/8" csg: Cmt'd w/1425 sxs Lite & 510 sxs C Cmt,
TOC at 35' from surface..
- c. 5 1/2" csg: Cmt'd w/1850 sxs Lite & 700 sxs H.
TOC @ 3055'

6. The anticipated characteristics, additives, use, and testing of drilling mud to be employed, along with the types and quantities of mud products to be maintained, shall be given. When air or gas drilling is proposed, the operator shall submit the following specific information:

Mud Program:

Open hole lateral section will be drilled with fresh water and polymer system

7. The anticipated testing, logging, and coring procedures to be used, including drill stem testing procedures, equipment, and safety measures.

a. DST Program: None

b. Core: None

c. Mud Logging: Two man unit, 10' samples from KOP to TD

d. Logs to be run: None

The expected bottom-hole pressure and any anticipated abnormal pressures, temperatures or potential hazards that are expected to be encountered, such as lost circulation zones and hydrogen sulfide. The operator's plans for mitigating such hazards shall be discussed. Should the potential to encounter hydrogen sulfide exist, the mitigation procedures shall comply with the provisions of Onshore Oil and Gas Order No. 6.

Bottom hole pressures at TD was is estimated to be 4300 psi, Bottom hole temperature 165 F. There is no anticipated Hydrogen Sulfide in this known drilling area. A job safety analysis prior to start will be performed. No abnormal pressures are anticipated.

9. Any other facets of the proposed operation which the operator wishes for BLM to consider in reviewing the application.

Anticipated time expected to do this work is 25 days.

This wellbore was initially drilled by Amoco Production Co. When Burlington Resources took over operatorship of this well, the wellbore was partially plugged. On February of 1992 the well was plugged to surface. See attached sketch of existing plugs.

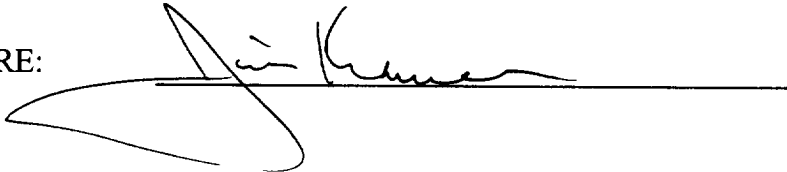
OPERATORS CERTIFICATION

I hereby certify that I, **Jim Kramer, Senior Staff Drilling Engineer**, under my direct supervision, have inspected the proposed drill site and access route that I am familiar with the conditions that currently exist; that the statements made in the APD package are, to the best of my knowledge, true and correct, and that the work associated with operations proposed herein will be performed by **not yet determined** contractors and subcontractors in conformity with this APD package and the terms and conditions under which it is approved. I also certify responsibility for the operations conducted on that portion of the leased lands associated with this application, with bond coverage being provided under BLM **statewide** bond. This statement is subject to the provisions of 18 U.S.C. 1001 for the filing of a false statement.

DATE: 11-12-97

NAME AND TITLE: Jim Kramer, Senior Staff Drilling Engineer

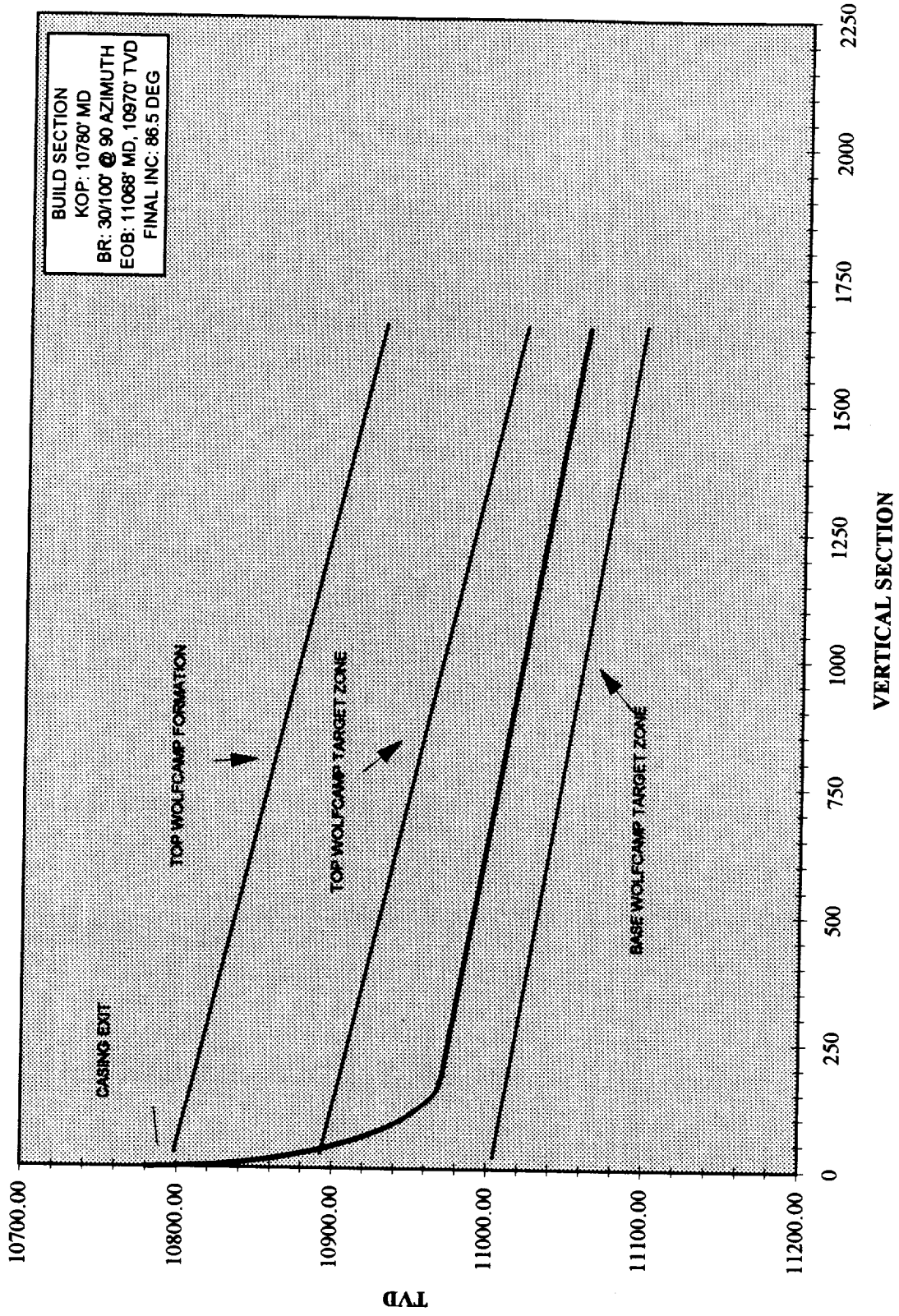
SIGNATURE:

A handwritten signature in black ink, appearing to read "Jim Kramer", is written over a horizontal line. The signature is stylized with a large, sweeping initial "J" and a long, horizontal stroke extending to the right.

PROPOSED RE-ENTRY OF A P&A WELL AND SIDETRACK LATERAL

FEDERAL AW #1		GEN (WOLFCAMP) FIELD		TARGET TVD =		TARGET INCLINATION =		10970.9																																																																																																																																																																																																																																																																																																																																																																																																																																																																																																																																																																																																																																																																																																																																																																																																																																																																																																																																																																																																																																																																																																																																																																																																																																																																																																																																																																																																																																																																																																																																																																											
---------------	--	----------------------	--	--------------	--	----------------------	--	---------	--	--	--	--	--	--	--	--	--	--	--	--	--	--	--	--	--	--	--	--	--	--	--	--	--	--	--	--	--	--	--	--	--	--	--	--	--	--	--	--	--	--	--	--	--	--	--	--	--	--	--	--	--	--	--	--	--	--	--	--	--	--	--	--	--	--	--	--	--	--	--	--	--	--	--	--	--	--	--	--	--	--	--	--	--	--	--	--	--	--	--	--	--	--	--	--	--	--	--	--	--	--	--	--	--	--	--	--	--	--	--	--	--	--	--	--	--	--	--	--	--	--	--	--	--	--	--	--	--	--	--	--	--	--	--	--	--	--	--	--	--	--	--	--	--	--	--	--	--	--	--	--	--	--	--	--	--	--	--	--	--	--	--	--	--	--	--	--	--	--	--	--	--	--	--	--	--	--	--	--	--	--	--	--	--	--	--	--	--	--	--	--	--	--	--	--	--	--	--	--	--	--	--	--	--	--	--	--	--	--	--	--	--	--	--	--	--	--	--	--	--	--	--	--	--	--	--	--	--	--	--	--	--	--	--	--	--	--	--	--	--	--	--	--	--	--	--	--	--	--	--	--	--	--	--	--	--	--	--	--	--	--	--	--	--	--	--	--	--	--	--	--	--	--	--	--	--	--	--	--	--	--	--	--	--	--	--	--	--	--	--	--	--	--	--	--	--	--	--	--	--	--	--	--	--	--	--	--	--	--	--	--	--	--	--	--	--	--	--	--	--	--	--	--	--	--	--	--	--	--	--	--	--	--	--	--	--	--	--	--	--	--	--	--	--	--	--	--	--	--	--	--	--	--	--	--	--	--	--	--	--	--	--	--	--	--	--	--	--	--	--	--	--	--	--	--	--	--	--	--	--	--	--	--	--	--	--	--	--	--	--	--	--	--	--	--	--	--	--	--	--	--	--	--	--	--	--	--	--	--	--	--	--	--	--	--	--	--	--	--	--	--	--	--	--	--	--	--	--	--	--	--	--	--	--	--	--	--	--	--	--	--	--	--	--	--	--	--	--	--	--	--	--	--	--	--	--	--	--	--	--	--	--	--	--	--	--	--	--	--	--	--	--	--	--	--	--	--	--	--	--	--	--	--	--	--	--	--	--	--	--	--	--	--	--	--	--	--	--	--	--	--	--	--	--	--	--	--	--	--	--	--	--	--	--	--	--	--	--	--	--	--	--	--	--	--	--	--	--	--	--	--	--	--	--	--	--	--	--	--	--	--	--	--	--	--	--	--	--	--	--	--	--	--	--	--	--	--	--	--	--	--	--	--	--	--	--	--	--	--	--	--	--	--	--	--	--	--	--	--	--	--	--	--	--	--	--	--	--	--	--	--	--	--	--	--	--	--	--	--	--	--	--	--	--	--	--	--	--	--	--	--	--	--	--	--	--	--	--	--	--	--	--	--	--	--	--	--	--	--	--	--	--	--	--	--	--	--	--	--	--	--	--	--	--	--	--	--	--	--	--	--	--	--	--	--	--	--	--	--	--	--	--	--	--	--	--	--	--	--	--	--	--	--	--	--	--	--	--	--	--	--	--	--	--	--	--	--	--	--	--	--	--	--	--	--	--	--	--	--	--	--	--	--	--	--	--	--	--	--	--	--	--	--	--	--	--	--	--	--	--	--	--	--	--	--	--	--	--	--	--	--	--	--	--	--	--	--	--	--	--	--	--	--	--	--	--	--	--	--	--	--	--	--	--	--	--	--	--	--	--	--	--	--	--	--	--	--	--	--	--	--	--	--	--	--	--	--	--	--	--	--	--	--	--	--	--	--	--	--	--	--	--	--	--	--	--	--	--	--	--	--	--	--	--	--	--	--	--	--	--	--	--	--	--	--	--	--	--	--	--	--	--	--	--	--	--	--	--	--	--	--	--	--	--	--	--	--	--	--	--	--	--	--	--	--	--	--	--	--	--	--	--	--	--	--	--	--	--	--	--	--	--	--	--	--	--	--	--	--	--	--	--	--	--	--	--	--	--	--	--	--	--	--	--	--	--	--	--	--	--	--	--	--	--	--	--	--	--	--	--	--	--	--	--	--	--	--	--	--	--	--	--	--	--	--	--	--	--	--	--	--	--	--	--	--	--	--	--	--	--	--	--	--	--	--	--	--	--	--	--	--	--	--	--	--	--	--	--	--	--	--	--	--	--	--	--	--	--	--	--	--	--	--	--	--	--	--	--	--	--	--	--	--	--	--	--	--	--	--	--	--	--	--	--	--	--	--	--	--	--	--	--	--	--	--	--	--	--	--	--	--	--	--	--	--	--	--	--	--	--	--	--	--	--	--	--	--	--	--	--	--	--	--	--	--	--	--	--	--	--	--	--	--	--	--	--	--	--	--	--	--	--	--	--	--	--	--	--	--	--	--	--	--	--	--	--	--	--	--	--	--	--	--	--	--	--	--	--	--	--	--	--	--	--	--	--	--	--	--	--	--	--	--	--	--	--	--	--	--	--	--	--	--	--	--	--	--	--	--	--	--	--	--	--	--	--	--	--	--	--	--	--	--	--	--	--	--	--	--	--	--	--	--	--	--	--	--	--	--	--	--	--	--	--	--	--	--	--	--	--	--	--	--	--	--	--	--	--	--	--	--	--	--	--	--	--	--	--	--	--	--	--	--	--	--	--	--	--	--	--	--	--	--	--	--	--	--	--	--	--	--	--	--	--	--	--	--	--	--	--	--	--	--	--	--	--	--	--	--	--	--	--	--	--	--	--	--	--	--	--	--	--	--	--	--	--	--	--	--	--	--	--	--	--	--	--	--	--	--	--	--	--	--	--	--	--	--	--	--	--	--	--	--	--	--	--	--	--	--	--	--	--	--	--	--	--	--	--	--	--	--	--	--	--	--	--	--	--	--	--	--	--	--	--	--	--	--	--	--	--	--	--	--	--	--	--	--	--	--	--	--	--	--	--	--	--	--	--	--	--	--	--	--	--	--	--	--	--	--	--	--	--	--	--	--	--	--	--	--	--	--	--	--	--	--	--	--	--	--	--	--	--	--	--	--	--	--	--	--	--	--	--	--	--	--	--	--	--	--	--	--	--	--	--	--	--	--	--	--	--	--	--	--	--	--	--	--	--	--	--	--	--	--	--	--	--	--	--	--	--	--	--	--	--	--	--	--	--	--	--	--	--	--	--	--	--	--	--	--	--	--	--	--	--	--	--	--	--	--	--	--	--	--	--	--	--	--	--	--	--	--	--	--	--	--	--	--	--	--	--	--	--	--	--	--	--	--	--	--	--	--	--	--	--	--	--	--	--	--	--	--	--	--	--	--	--	--	--	--	--	--	--	--	--	--	--	--	--	--	--	--	--	--	--	--	--	--	--	--	--	--	--	--	--	--	--	--	--	--	--	--	--	--	--	--	--	--	--	--	--	--	--	--	--	--	--	--	--	--	--	--	--	--	--

FEDERAL AW #1
BUILD SECTION
WOLFCAMP ZONE ENTRY



BLOWOUT PREVENTION EQUIPMENT
 10" 900s ALL FLANGED EQUIPMENT
 5,000# WORKING PRESSURE - 10,000# TEST

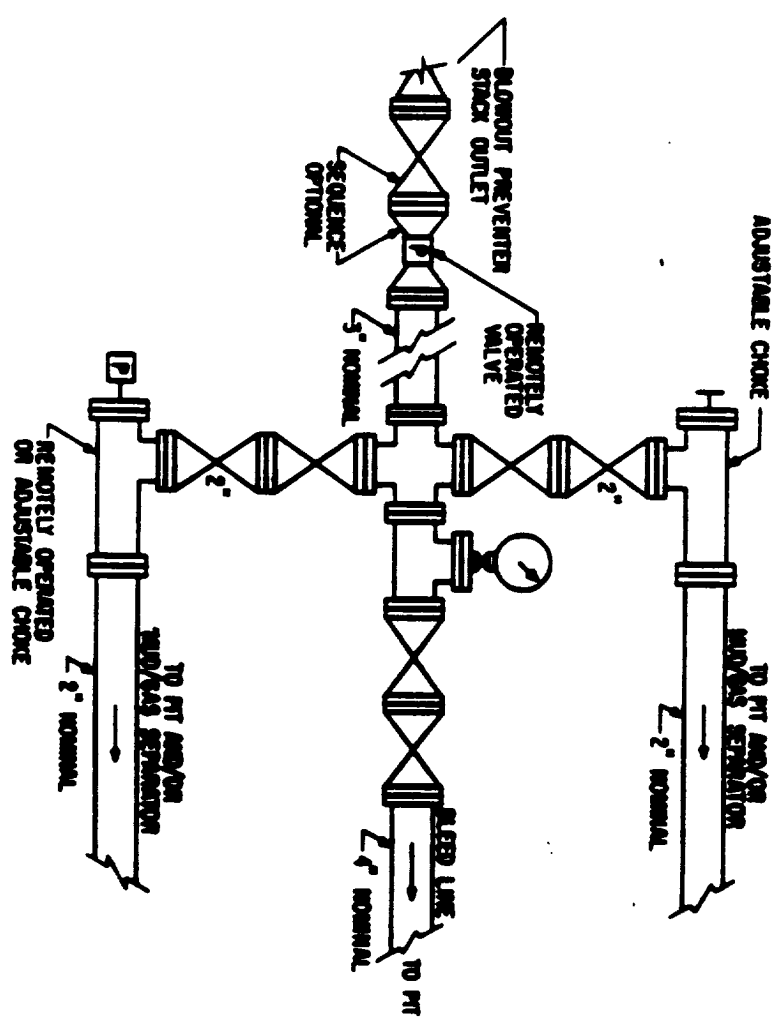
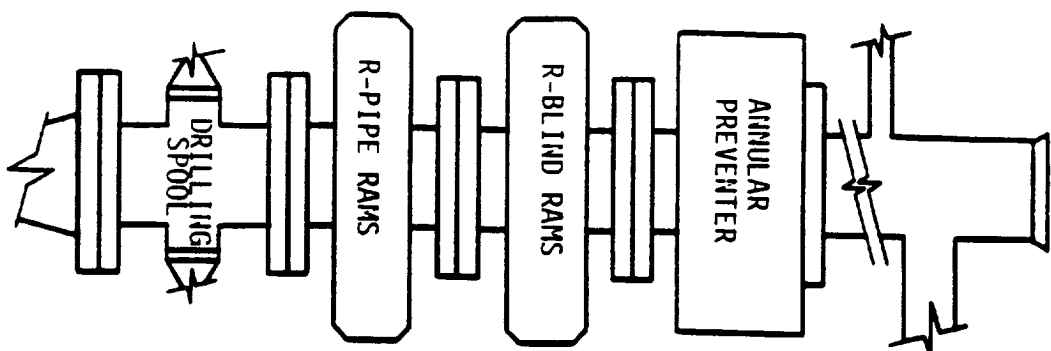


FIG. 3.A.2

TYPICAL CHOKE MANIFOLD ASSEMBLY FOR SM
 RATED WORKING PRESSURE SERVICE -
 SURFACE INSTALLATION