

UNITED STATES DEPARTMENT OF THE INTERIOR
BUREAU OF LAND MANAGEMENT
NEW MEXICO 88240

APPLICATION FOR PERMIT TO DRILL, DEEPEN, OR PLUG BACK

1a. TYPE OF WORK

DRILL ☐

DEEPEN ☐

PLUG BACK ☒

b. TYPE OF WELL

OIL
WELL ☒

GAS
WELL ☐

OTHER

SINGLE
ZONE ☒

MULTIPLE
ZONE ☐

2. NAME OF OPERATOR

AMOCO PRODUCTION COMPANY

3. ADDRESS OF OPERATOR

P.O. BOX 68 HOBBS, NEW MEXICO 88240

4. LOCATION OF WELL (Report location clearly and in accordance with any State requirements.)

At surface

1980' FNL X 660' FWL, Sec. 26

At proposed prod. zone

(Unit E, SW 1/4 NW 1/4)

14. DISTANCE IN MILES AND DIRECTION FROM NEAREST TOWN OR POST OFFICE*

3002527017

15. DISTANCE FROM PROPOSED*

LOCATION TO NEAREST
PROPERTY OR LEASE LINE, FT.
(Also to nearest drlg. unit line, if any)

18. DISTANCE FROM PROPOSED LOCATION*
TO NEAREST WELL, DRILLING, COMPLETED,
OR APPLIED FOR, ON THIS LEASE, FT.

21. ELEVATIONS (Show whether DF, RT, GR, etc.)

3581.8' GL

16. NO. OF ACRES IN LEASE

19. PROPOSED DEPTH

10,715'

17. NO. OF ACRES ASSIGNED
TO THIS WELL

40

20. ROTARY OR CABLE TOOLS

22. APPROX. DATE WORK WILL START*

5. LEASE DESIGNATION AND SERIAL NO.

NM-12412

6. IF INDIAN, ALLOTTEE OR TRIBE NAME

7. UNIT AGREEMENT NAME

8. FARM OR LEASE NAME

Federal AW

9. WELL NO.

1

10. FIELD AND POOL, OR WILDCAT

Und. Bone Springs

11. SEC., T., R., M., OR BLK.
AND SURVEY OR AREA

26-19-32

12. COUNTY OR PARISH

Lea

NM

13. STATE

PROPOSED CASING AND CEMENTING PROGRAM

SIZE OF HOLE	SIZE OF CASING	WEIGHT PER FOOT	SETTING DEPTH	QUANTITY OF CEMENT
17 1/2"	13 3/8"	48#	512'	475 SX Class C
12 1/4"	9 7/8"	40#	5,745'	1425 SX Lt., 510 SX Cl H
8 3/4"	5 1/2"	17#, 20#, 23#	13,520'	1850 SX Lt., 700 SX Cl H

Propose to recomplete the subject well from the Wolfcamp to the Bone Springs as follows:
1154 and kill well as necessary. POH with production equipment. RIH with CIBP and set at 10,750'. Cap CIBP with
5' Class H Neat cement. Circulate hole with clean 2% KCl. Perforate the Bone Springs interval 10,482'-10,516' with 4 DPT
F. RIH with packer and set at 10,450'. Swab to evaluate productivity. Acidize down tubing with 7000 gals of 7 1/2%
FE HCl acid. Swab test. Release packer and POH. RIH with tubing, rods, and pump. Land seating nipple at appx.
1,550'. Return well to production.

DTG, BLM, C 1-JLB 1-FIN 1-CMH 1-SUN

IN ABOVE SPACE DESCRIBE PROPOSED PROGRAM: If proposal is to deepen or plug back, give data on present productive zone and proposed new productive zone. If proposal is to drill or deepen directionally, give pertinent data on subsurface locations and measured and true vertical depths. Give blowout preventer program, if any.

24.

SIGNED

Charles M. Herring

TITLE

Administrative Analyst (SG)

DATE

10/30/85

(This space for Federal or State office use)

PERMIT NO.

APPROVAL DATE

APPROVED BY

Mark J. Loefer

TITLE

CAN. SEC. PROD. DIV. OF B.

DATE

11-12-85

CONDITIONS OF APPROVAL, IF ANY:

*See Instructions On Reverse Side

RECEIVED

NOV 13 1965

O.C.D.
HOSES OFFICE

NE EXICO OIL CONSERVATION COMMISSION
WELL LOCATION AND ACREAGE DEDICATION PLAT

Form C-102
Supersedes C-126
Effective 1-1-65

All distances must be from the outer boundaries of the Section

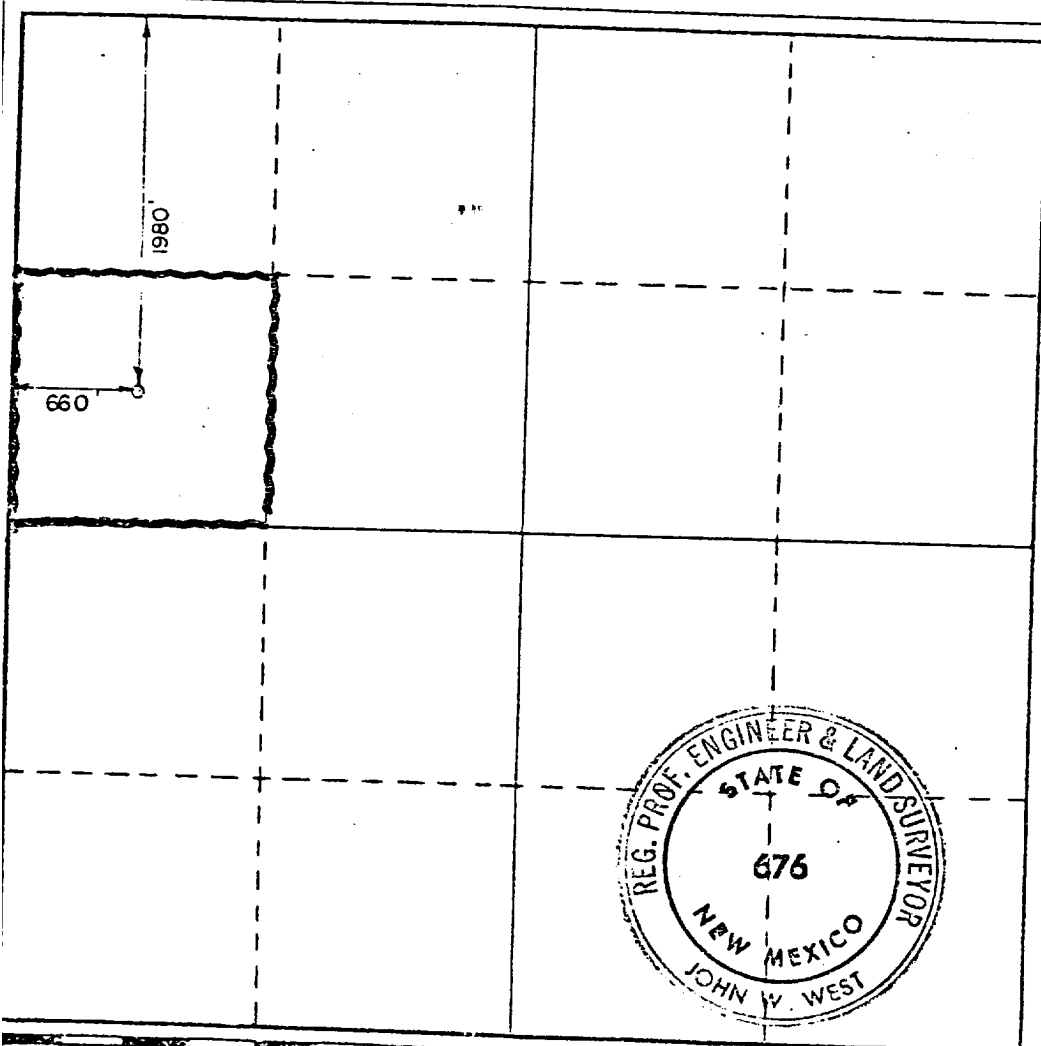
Operator AMOCO Production Co.			Lease Federal AW			Well No. 1		
East Letter E	Section 26	Township 19 South	Range 32 East	County Lea				
Actual Well Location of Well: 1980 feet from the North line and 660 feet from the West line								
Ground Level Elev. 3581.8		Producing Formation Bone Springs		Pool Und. Bone Springs		Dedicated Acreage: 40		

1. Outline the acreage dedicated to the subject well by colored pencil or hatchure marks on the plat below.
2. If more than one lease is dedicated to the well, outline each and identify the ownership thereof (both as to working interest and royalty).
3. If more than one lease of different ownership is dedicated to the well, have the interests of all owners been consolidated by communitization, unitization, force-pooling, etc?

☐ Yes ☐ No If answer is "yes," type of consolidation _____

If answer is "no," list the owners and tract descriptions which have actually been consolidated. (Use reverse side of this form if necessary.) _____

No allowable will be assigned to the well until all interests have been consolidated (by communitization, unitization, forced-pooling, or otherwise) or until a non-standard unit, eliminating such interests, has been approved by the Commission.



CERTIFICATION

I hereby certify that the information contained herein is true and complete to the best of my knowledge and belief.

Name Charles M. Herring
Position Admin. Analyst (SG)
Company Amoco Production Company

Date 10-30-85

I hereby certify that the well location shown on this plat was plotted from field notes of actual surveys made by me or under my supervision, and that the same is true and correct to the best of my knowledge and belief.

Date Surveyed 7-3-1980

Registered Professional Engineer and/or Land Surveyor

John W. West
Certificate No. JOHN W. WEST 676
PATRICK A. ROMERO 6863
Ronald J. Eason 3239

330 660 990 1320 1650 1980 2310 2640 2970 3300 3630 3960 4290 4620 4950 5280 5610 5940 6270 6600

RECEIVED
NOV 13 1985
O.C.D.
HOSES OFFICE