

NEW MEXICO OIL CONSERVATION COMMISSION
WELL LOCATION AND ACREAGE DEDICATION PLAT

Form C-102
Supersedes C-128
Effective 1-1-65

All distances must be from the outer boundaries of the Section

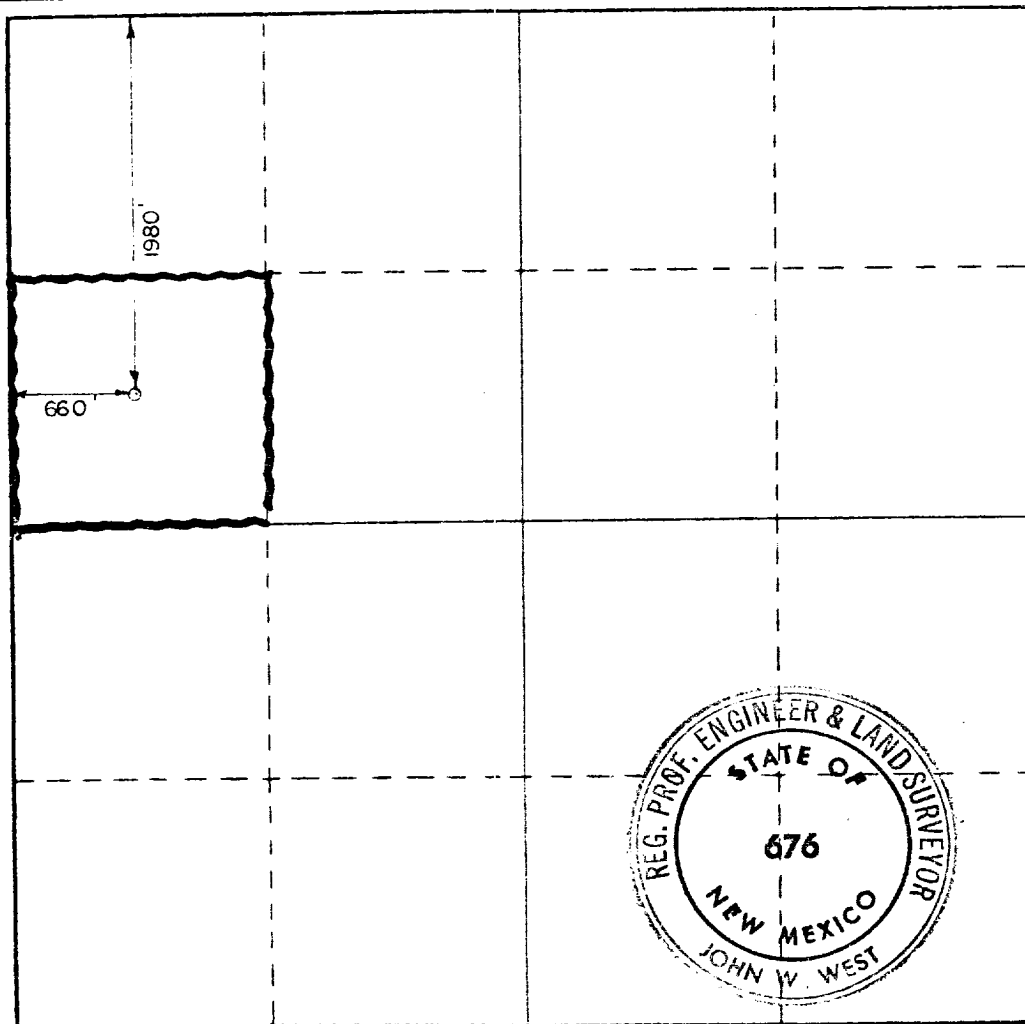
Operator AMOCO Production Co.		Lease Federal AW		Well No. 1
Unit Letter E	Section 26	Township 19 South	Range 32 East	County Lea
Actual Forfeiture Location of well: 1980 feet from the North line and 660 feet from the West line				
Ground Level Elev. 3581.8	Producing Formation Wolfcamp	Pool Wildcat Wolfcamp	Dedicated Acreage: 40 Acres	

- Outline the acreage dedicated to the subject well by colored pencil or hatchure marks on the plat below.
- If more than one lease is dedicated to the well, outline each and identify the ownership thereof (both as to working interest and royalty).
- If more than one lease of different ownership is dedicated to the well, have the interests of all owners been consolidated by communitization, unitization, force-pooling, etc?

☐ Yes ☐ No If answer is "yes," type of consolidation _____

If answer is "no," list the owners and tract descriptions which have actually been consolidated. (Use reverse side of this form if necessary.) _____

No allowable will be assigned to the well until all interests have been consolidated (by communitization, unitization, forced-pooling, or otherwise) or until a non-standard unit, eliminating such interests, has been approved by the Commission.



CERTIFICATION

I hereby certify that the information contained herein is true and complete to the best of my knowledge and belief.

Name Benton Green
Position
Assistant Admin. Analyst
Company
Amoco Production Company
Date
3-30-81

I hereby certify that the well location shown on this plat was plotted from field notes of actual surveys made by me or under my supervision, and that the same is true and correct to the best of my knowledge and belief.

Date Surveyed
7-3-1980

Registered Professional Engineer and/or Land Surveyor

Certificate No. JOHN W. WEST 676
PATRICK A. ROMERO 6663
Ronald J. Eidson 3239