

NEW MEXICO OIL CONSERVATION COMMISSION
WELL LOCATION AND ACREAGE DEDICATION PLAT

Form C-102
Supersedes C-128
Effective 1-1-65

All distances must be from the outer boundaries of the Section

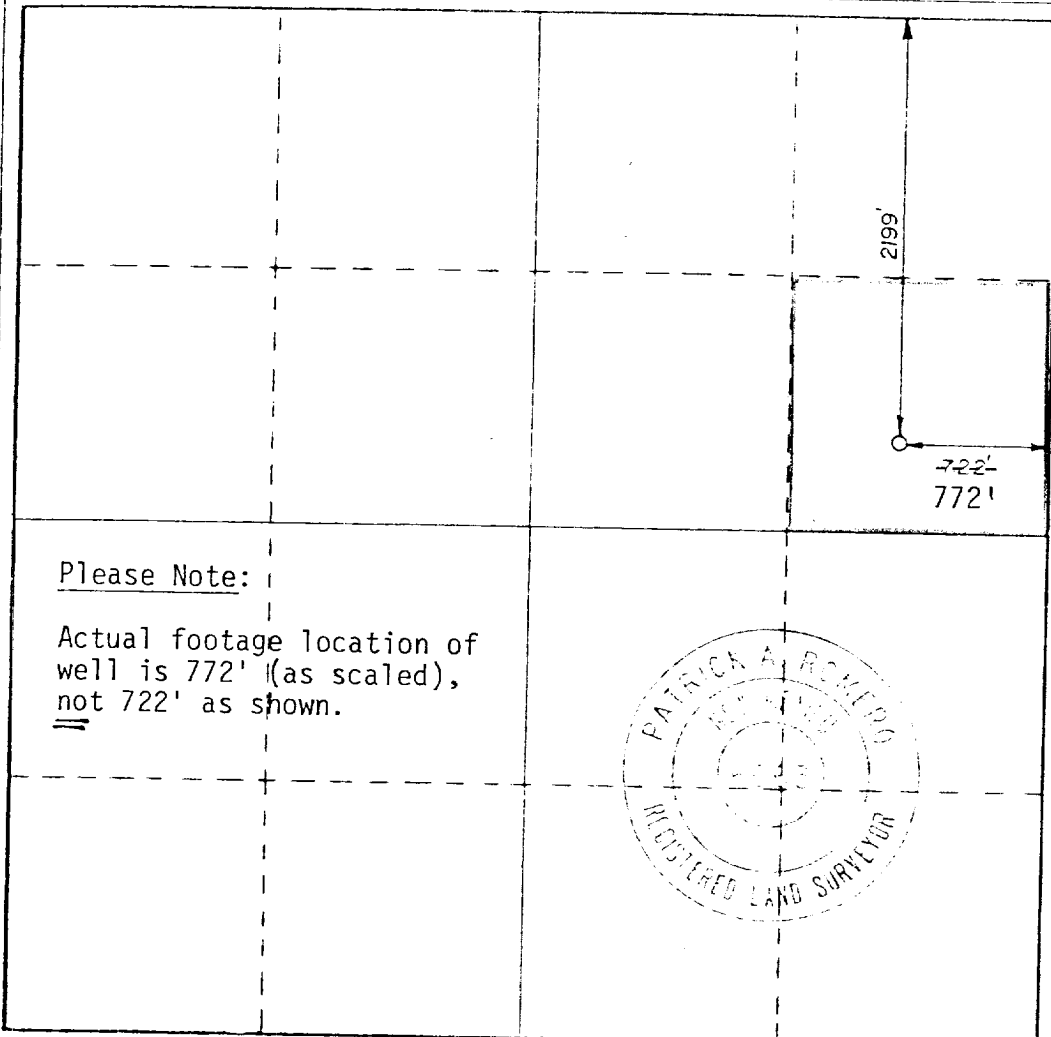
Operator Shell Oil Co.		Lease North Hobbs Unit		Well No. Sec 28
Unit Letter H	Section 28	Township 18 South	Range 38 East	County Lea County, New Mexico
Actual Footage Location of Well: 2199 feet from the North line and 722- 772 feet from the East line				
Ground Level Elev. 3637.0	Producing Formation G/Sa	Pool Hobbs G/Sa	Dedicated Acreage: 40 Acres	

1. Outline the acreage dedicated to the subject well by colored pencil or hatchure marks on the plat below.
2. If more than one lease is dedicated to the well, outline each and identify the ownership thereof (both as to working interest and royalty).
3. If more than one lease of different ownership is dedicated to the well, have the interests of all owners been consolidated by communitization, unitization, force-pooling, etc?

☐ Yes ☐ No If answer is "yes," type of consolidation _____

If answer is "no," list the owners and tract descriptions which have actually been consolidated. (Use reverse side of this form if necessary.) _____

No allowable will be assigned to the well until all interests have been consolidated (by communitization, unitization, forced-pooling, or otherwise) or until a non-standard unit, eliminating such interests, has been approved by the Commission.



CERTIFICATION

I hereby certify that the information contained herein is true and complete to the best of my knowledge and belief.

A.J. Fore A.J. Fore
Position

Supervisor Regulatory & Permits
Company

Shell Oil Company

Date
January 27, 1981

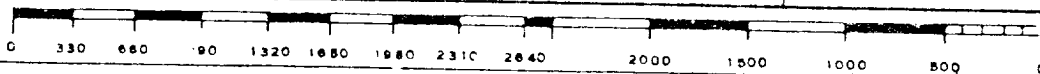
I hereby certify that the well location shown on this plat was plotted from field notes of actual surveys made by me or under my supervision, and that the same is true and correct to the best of my knowledge and belief.

Date Surveyed
January 6, 1981

Registered Professional Engineer
and or Land Surveyor

Patrick A. Romero

Certificate No. **JOHN W. WEST 676**
PATRICK A. ROMERO 6663
Ronald J. Eidson 3239



RECEIVED
JAN 30 1931
U.S. DEPARTMENT OF AGRICULTURE

*Injection of
4-8-87*

*4/15/81
Cement from
3/29/84
Injection of
Aug 12-11-84
Impregnation*