

30-025-27402

Form C-101
Revised 10-1-78

NO. OF COPIES RECEIVED	
DISTRIBUTION	
SANTA FE	
FILL	
U.S.G.S.	
LAND OFFICE	
OPERATOR	

5A. Indicate Type of Lease
STATE ☒ FEE ☐
5. State Oil & Gas Lease No.
B-2229

APPLICATION FOR PERMIT TO DRILL, DEEPEN, OR PLUG BACK

1a. Type of Work
b. Type of Well
DRILL ☒ DEEPEN ☐ PLUG BACK ☐
OIL WELL ☒ GAS WELL ☐ OTHER ☐
SINGLE ZONE ☒ MULTIPLE ZONE ☐
2. Name of Operator
Phillips Petroleum Company
3. Address of Operator
4001 Penbrook Street, Room 401, Odessa, Texas, 79762
4. Location of Well
UNIT LETTER A LOCATED 660 FEET FROM THE north LINE
AND 660 FEET FROM THE east LINE OF SEC. 28 TWP. 17-S RGT. 33-E NMPM
19. Proposed Depth
6300'
19A. Formation
Paddock
20. Rotary or C.T.
Rotary
21. Elevations (Show whether D.F., R.T., etc.)
4169.5 (Unprepared)
21A. Kind & Status Plug. Bond
Blanket
21B. Drilling Contractor
Advise Later
22. Approx. Date Work will start
Upon Approval

7. Unit Agreement Name

8. Farm or Lease Name
Philmed
9. Well No.
15
10. Field and Pool, or Wildcat
Leamex (Paddock)
12. County
Lea

PROPOSED CASING AND CEMENT PROGRAM

SIZE OF HOLE	SIZE OF CASING	WEIGHT PER FOOT	SETTING DEPTH	SACKS OF CEMENT	EST. TOP
11"	8-5/8"	24#, K-55	1500'	400 sxs TLW,	
	(w/1/4#/sx Flocele; followed w/150 sxs Cl "C" w/2% CaCl ₂ circ to surface)				
7-7/8"	4-1/2"	11.6#, N-80	6500'	Caliper Volume	
	(Plus 30% excess TLW, 2.19 cf/sx w/10% Diacel-D, 7.5#/sx salt and 1/4#/sx Flocele; followed w/sufficient Cl "C" w/2% CaCl ₂ Circ to surface.)				

Use mud additives as required for control.
BOP Equipment: 3000 psi WP per PPCo. BOP Standard Fig No. 7.

APPROVAL VALID FOR 180 DAYS
PERMIT EXPIRES 11/4/81
UNLESS DRILLING UNDERWAY

IN ABOVE SPACE DESCRIBE PROPOSED PROGRAM; IF PROPOSAL IS TO DEEPEN OR PLUG BACK, GIVE DATA ON PRESENT PRODUCTIVE ZONE AND PROPOSED NEW PRODUCTIVE ZONE. GIVE BLOWOUT PREVENTER PROGRAM, IF ANY.

I hereby certify that the information above is true and complete to the best of my knowledge and belief.

Signature W.J. Mueller Title Sr. Engineering Specialist Date April 30, 1981

(This space for State Use)

APPROVED BY [Signature] TITLE Supervisor of Drilling DATE 11/4/81

CONDITIONS OF APPROVAL, IF ANY:

NEW MEXICO OIL CONSERVATION COMMISSION
WELL LOCATION AND ACREAGE DEDICATION PLAT

Form C-102
Supersedes C-128
Effective 1-1-85

All distances must be from the outer boundaries of the Section

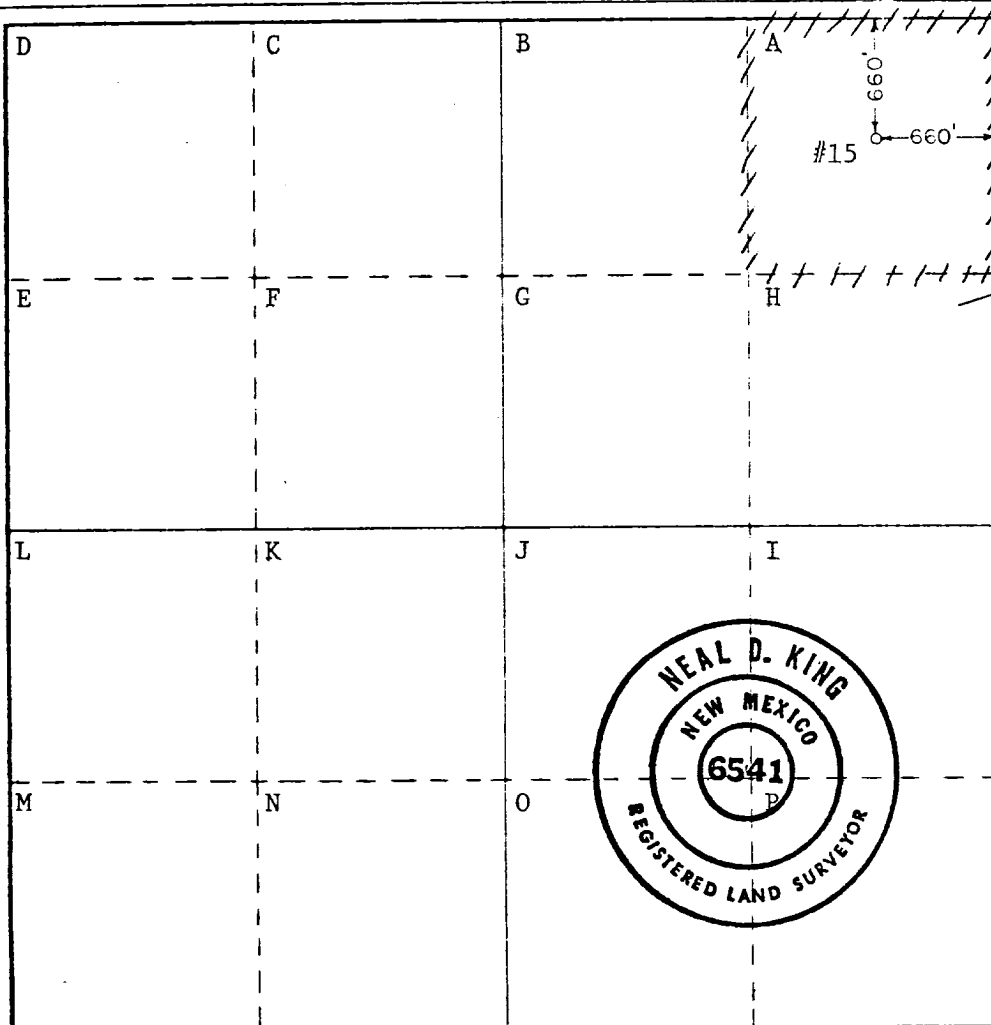
Operator Phillips Petroleum Company		Lease Philmex		Well No. 15
Unit Letter A	Section 28	Township 17S	Range 33E	County Lea
Actual Footage Location of Well: 660 feet from the North line and 660 feet from the East line				
Ground Level Elev. 4169.5 (Unprepared)	Producing Formation Paddock	Foot Leamex (Paddock)	Dedicated Acreage: 40 Acres	

1. Outline the acreage dedicated to the subject well by colored pencil or hatchure marks on the plat below.
2. If more than one lease is dedicated to the well, outline each and identify the ownership thereof (both as to working interest and royalty).
3. If more than one lease of different ownership is dedicated to the well, have the interests of all owners been consolidated by communitization, unitization, force-pooling, etc?

☐ Yes ☐ No If answer is "yes," type of consolidation _____

If answer is "no," list the owners and tract descriptions which have actually been consolidated. (Use reverse side of this form if necessary.) _____

No allowable will be assigned to the well until all interests have been consolidated (by communitization, unitization, forced-pooling, or otherwise) or until a non-standard unit, eliminating such interests, has been approved by the Commission.



CERTIFICATION

I hereby certify that the information contained herein is true and complete to the best of my knowledge and belief.

[Signature]
Name
W. J. Mueller

Position
Sr. Engineering Specialist

Company
Phillips Petroleum Company

Date
April 30, 1981

I hereby certify that the well location shown on this plat was plotted from field notes of actual surveys made by me or under my supervision, and that the same is true and correct to the best of my knowledge and belief.

Date Surveyed

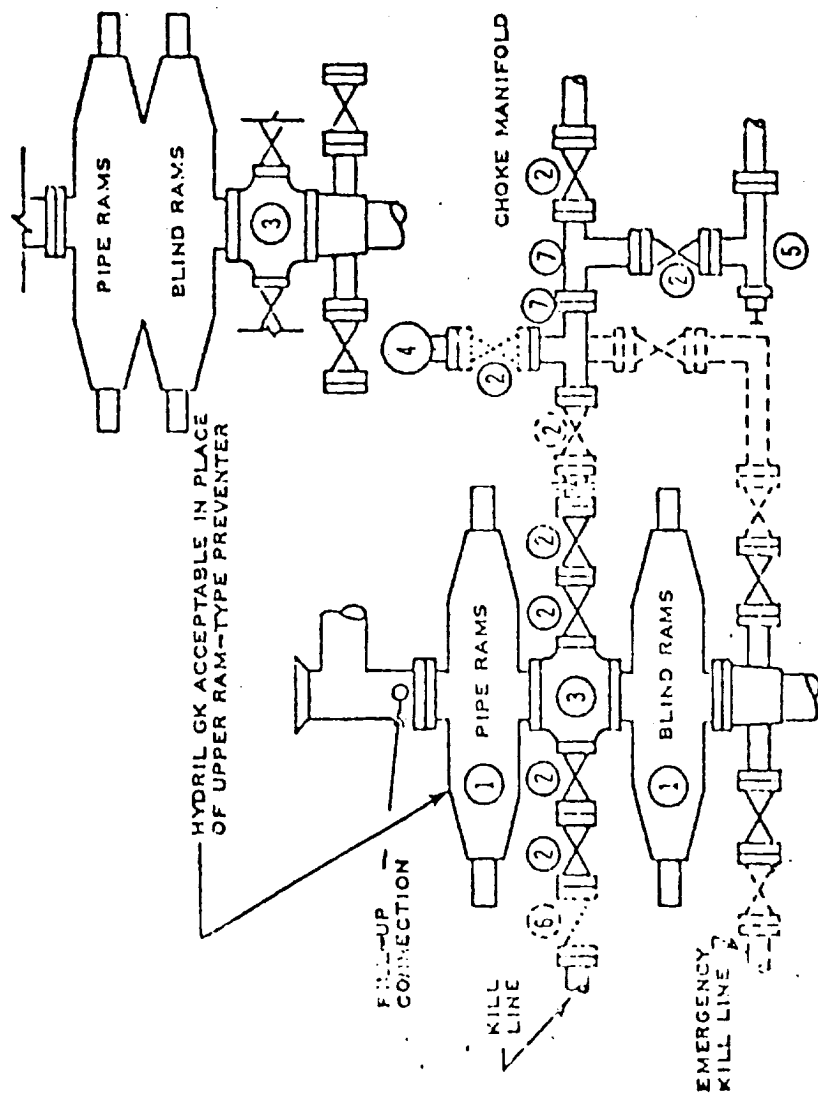
April 28, 1981

Registered Professional Engineer and/or Land Surveyor

[Signature] **R.L.S.**
Certificate No.

6541

DOUBLE PREVENTER OPTION



- ① SERIES 900 RAM-TYPE BOP
- ② 2" SERIES 900 VALVE
- ③ SERIES 900 DRILLING SPOOL
- ④ 2" MUD PRESSURE GAUGE
- ⑤ 2" SERIES 900 CHOKE
- ⑥ 2" SERIES 900 CHECK VALVE
- ⑦ 2" SERIES 900 STEEL TEE

NOTES:

1. 3000 PSI WP CLAMP
HUSSEY MAY BE SUBSTITUTED
FOR FLANGES
2. VALVES MAY BE EITHER HAND OR POWER
OPERATED BUT, IF POWER OPERATED,
THE VALVES FLANGED TO THE BOP RUN
MUST BE CAPABLE OF BEING OPENED AND
CLOSED MANUALLY OR CLOSE ON POWER
FAILURE AND BE CAPABLE OF BEING
OPENED MANUALLY

..... OPTIONAL EQUIPMENT

PHILLIPS PETROLEUM COMPANY

3000 PSI WORKING PRESSURE
BLOWOUT PREVENTER HOOK-UP
(SERIES 900 FLANGES OR BETTER)

REV 6/73

FIGURE NO. 7

RECEIVED

MAY 1 1981

BIRCHMOUNT DIV.

ELP