

UNITED STATES
DEPARTMENT OF THE INTERIOR
GEOLOGICAL SURVEY
HOBBS, NEW MEXICO

SUBMIT IN TRIPLIC.

(Other instructions on reverse side)

Form approved.
Budget Bureau No. 42-R1425.

30-025-27574
DESIGNATION AND SERIAL NO.

APPLICATION FOR PERMIT TO DRILL, DEEPEN, OR PLUG BACK

1a. TYPE OF WORK

DRILL ☒

DEEPEN ☐

PLUG BACK ☐

b. TYPE OF WELL

OIL WELL ☐

GAS WELL ☒

OTHER

SINGLE ZONE ☒

MULTIPLE ZONE ☐

2. NAME OF OPERATOR

Grace Petroleum Corporation

3. ADDRESS OF OPERATOR

P.O. Drawer 2358, Midland, Texas 79702

4. LOCATION OF WELL (Report location clearly and in accordance with any State requirements.)*

At surface 2480' FSL & 660' FWL

At proposed prod. zone

14. DISTANCE IN MILES AND DIRECTION FROM NEAREST TOWN OR POST OFFICE*

5 miles NE of Halfway, New Mexico

15. DISTANCE FROM PROPOSED* 660' to lease line

LOCATION TO NEAREST PROPERTY OR LEASE LINE, FT.

(Also to nearest drlg. unit line, if any) 660' to unit line

18. DISTANCE FROM PROPOSED LOCATION*

TO NEAREST WELL, DRILLING, COMPLETED,

OR APPLIED FOR, ON THIS LEASE, FT.

None

16. NO. OF ACRES IN LEASE

320 (com.)

19. PROPOSED DEPTH

14,500'

17. NO. OF ACRES ASSIGNED TO THIS WELL

320

20. ROTARY OR CABLE TOOLS

Rotary

21. ELEVATIONS (Show whether DF, RT, GR, etc.)

3582.6' GR

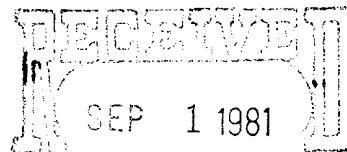
22. APPROX. DATE WORK WILL START*

10-16-81

PROPOSED CASING AND CEMENTING PROGRAM

SIZE OF HOLE	SIZE OF CASING	WEIGHT PER FOOT	SETTING DEPTH	QUANTITY OF CEMENT
17 1/2"	13-3/8"	54.5	470'	500 sx of Class "C" 2% CC
12 1/4"	8-5/8"	24, 28, 32	5200'	55 sx 1st stage, 925 sx 2nd stag
7 7/8"	5-1/2"	17#	14500'	1000 sx Class "H" w/additives

See attached sheet for casing and cementing program. The well will be drilled to a depth of 14,500' to test the Morrow Sands. Dual 1500 series ram type blowout preventers and one Hydril will be used.



OIL & GAS
U.S. GEOLOGICAL SURVEY
ROSWELL, NEW MEXICO

GAS IS DEDICATED

IN ABOVE SPACE DESCRIBE PROPOSED PROGRAM: If proposal is to deepen or plug back, give data on present productive zone and proposed new productive zone. If proposal is to drill or deepen directionally, give pertinent data on subsurface locations and measured and true vertical depths. Give blowout preventer program, if any.

24.

SIGNED

Buddy P. Knight

TITLE District Production Manager DATE 8-17-81

(This space for Federal or State office use)

PERMIT NO.

APPROVAL DATE

APPROVED BY

TITLE

DATE

CONDITIONS OF APPROVAL, IF ANY:

*See Instructions On Reverse Side

NEW MEXICO OIL CONSERVATION COMMISSION
WELL LOCATION AND ACREAGE DEDICATION PLAT

Form C-128
Supersedes C-128
Effective 1-1-65

All distances must be from the outer boundaries of the Section

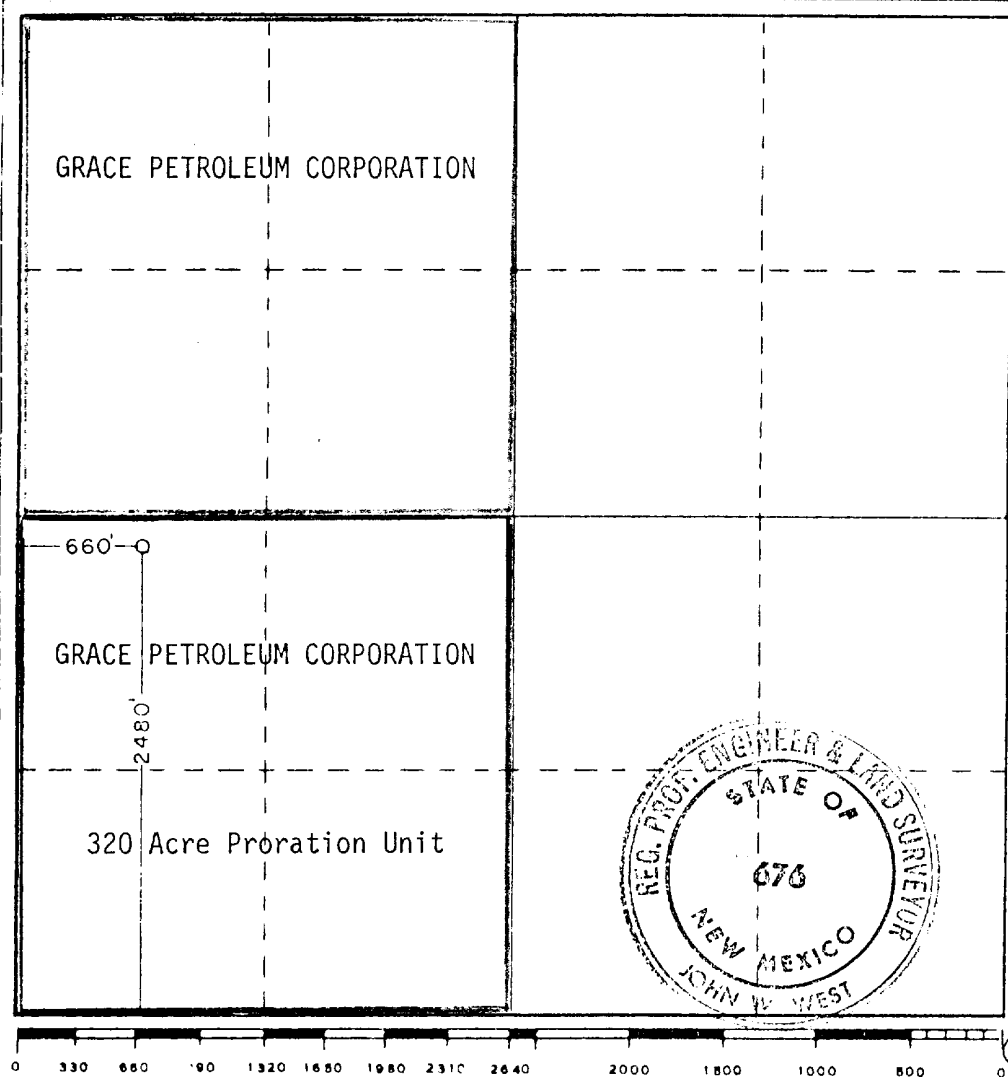
Operator Grace Petroleum Corporation			Lease West Tonto Fed. Com			Well No. 12
Unit Letter L	Section 25	Township 19South	Range 32East	County Lea Co.		
Actual Footage Location of Well: 2480 feet from the South line and 660 feet from the West line						
Ground Level Elev. 3582.6'	Producing Formation Morrow Sand		Pool Undesignated		Dedicated Acreage 320	

1. Outline the acreage dedicated to the subject well by colored pencil or hachure marks on the plat below.
2. If more than one lease is dedicated to the well, outline each and identify the ownership thereof (both as to working interest and royalty).
3. If more than one lease of different ownership is dedicated to the well, have the interests of all owners been consolidated by communitization, unitization, force-pooling, etc?

☐ Yes ☒ No If answer is "yes," type of consolidation Communitization in progress

If answer is "no," list the owners and tract descriptions which have actually been consolidated. (Use reverse side of this form if necessary.)

No allowable will be assigned to the well until all interests have been consolidated (by communitization, unitization, forced-pooling, or otherwise) or until a non-standard unit, eliminating such interests, has been approved by the Commission.



CERTIFICATION

I hereby certify that the information contained herein is true and complete to the best of my knowledge and belief.

Name
District Production Manager
Position
Grace Petroleum Corporation
Company
August 27, 1981
Date

I hereby certify that the well location shown on this plat was plotted from field notes of actual surveys made by me or under my supervision, and that the same is true and correct to the best of my knowledge and belief.

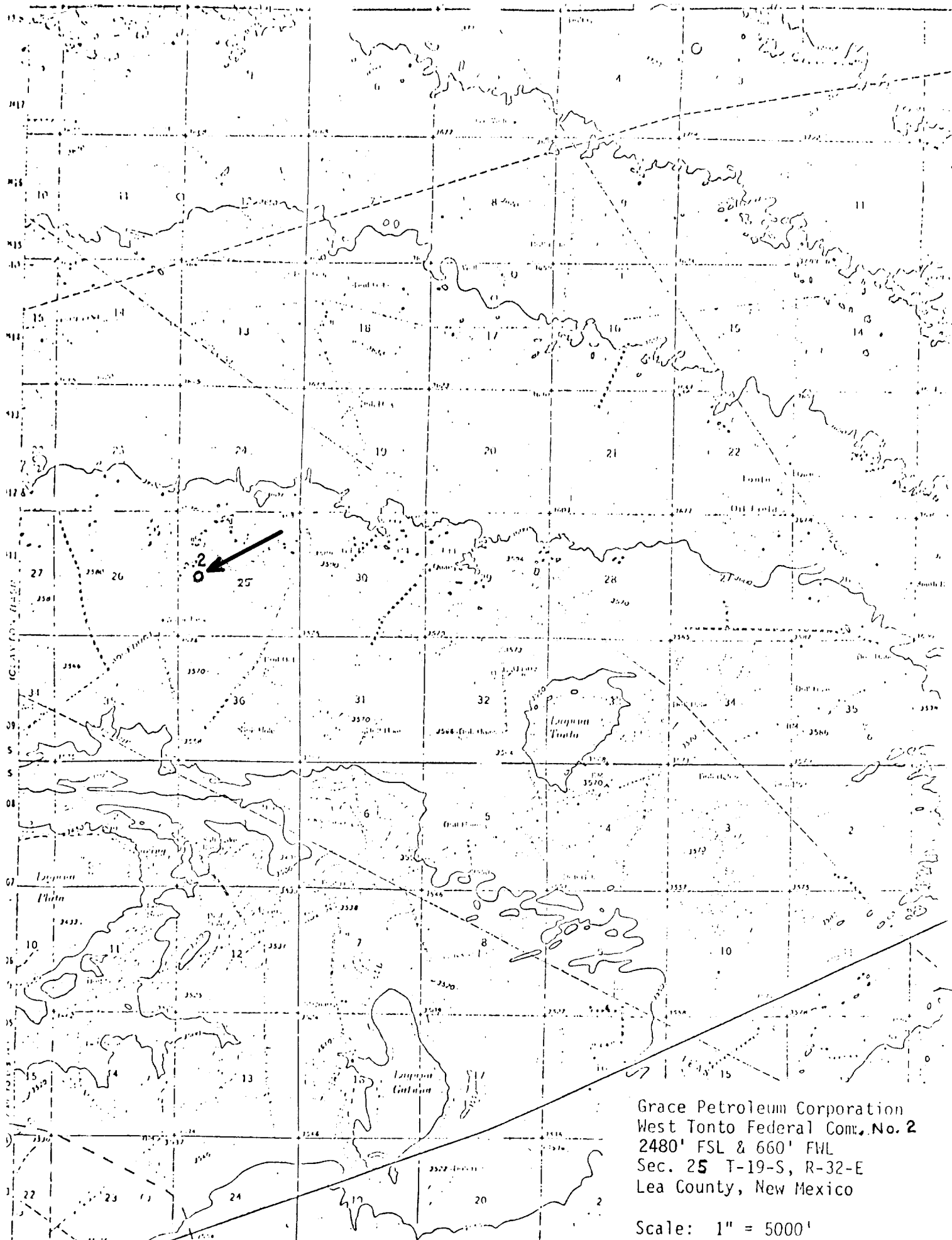
Date Surveyed
Aug. 24, 1981

Registered Professional Engineer and/or Land Surveyor

Certificate No. JOHN W. WEST 676
PATRICK A. ROMERO 6863
Ronald J. Eidson 3239

☐ Grace Petroleum Corporation Lease
160 acres (SW/4 Sec. 25)
W.I.: Grace Petroleum Corporation 100%
Royalty: 12 1/2% U.S. Gov't.
5% Starman Exploration

☐ Grace Petroleum Corporation Lease
160 acres (NW/4 Sec. 25)
W.I.: Grace Petroleum Corporation 75%
Supron Energy Corporation 25%
Royalty: 12 1/2% U.S. Gov't



Grace Petroleum Corporation
West Tonto Federal Com., No. 2
2480' FSL & 660' FWL
Sec. 25 T-19-S, R-32-E
Lea County, New Mexico

Scale: 1" = 5000'