

30-025-27695

Form C-101
Revised 1-1-65

NEW MEXICO OIL CONSERVATION COMMISSION

NO. OF COPIES RECEIVED	
DISTRIBUTION	
SANTA FE	
FILE	
U.S.G.S.	
LAND OFFICE	
OPERATOR	

5A. Indicate Type of Lease	
STATE <input checked="" type="checkbox"/>	FEE <input type="checkbox"/>
5. State Oil & Gas Lease No.	
L-786	

APPLICATION FOR PERMIT TO DRILL, DEEPEN, OR PLUG BACK

1a. Type of Work		7. Unit Agreement Name	
b. Type of Well OIL WELL <input checked="" type="checkbox"/> GAS WELL <input type="checkbox"/> OTHER <input type="checkbox"/>		8. Farm or Lease Name Gulf State	
2. Name of Operator Energy Reserves Group, Inc.		9. Well No. 5	
3. Address of Operator P. O. Drawer 2437, Midland, Texas 79702		10. Field and Pool, or Wildcat Buckeye (Abo)	
4. Location of Well UNIT LETTER <u>F</u> LOCATED <u>1650</u> FEET FROM THE <u>North</u> LINE AND <u>1650</u> FEET FROM THE <u>West</u> LINE OF SEC. <u>9</u> TWP. <u>18-S</u> RGE. <u>35-E</u> NMPM		12. County Lea	
19. Proposed Depth 9300		19A. Formation Abo Detrital	
20. Rotary or C.T. Rotary		21. Elevations (Show whether DF, RI, etc.) 3942.0 GL	
21A. Kind & Status Plug. Bond Blanket on File		21B. Drilling Contractor MGF Drlg. Corp.	
22. Approx. Date Work will start 01-18-82			

23.

PROPOSED CASING AND CEMENT PROGRAM

SIZE OF HOLE	SIZE OF CASING	WEIGHT PER FOOT	SETTING DEPTH	SACKS OF CEMENT	EST. TOP
17 1/2"	13 3/8"	48#	330	280	Circ.
11"	8 5/8"	32#	3600	*	350
7 7/8"	4 1/2"	11.6#	9300	260	7000

Intermediate csg. DV tool @ 1800'. First Stage: 500 sx. cmt. Second Stage: 450 sx. cmt.

Blowout Prevention Program: Shaffer Type 39-B Double, 10#, Series 900, with Payne Model 5200-B Closing unit with remote control station.

Surveyor's plat attached.

**** Cement on the intermediate casing must be brought from the top of the salt or anhydrite to the surface casing by either circulating with cement or a DV tool at the top of the salt.

IN ABOVE SPACE DESCRIBE PROPOSED PROGRAM: IF PROPOSAL IS TO DEEPEN OR PLUG BACK, GIVE DATA ON PRESENT PRODUCTIVE ZONE AND PROPOSED NEW PRODUCTIVE ZONE. GIVE BLOWOUT PREVENTER PROGRAM, IF ANY.

I hereby certify that the information above is true and complete to the best of my knowledge and belief.

Signed R. L. Robertson Title Production Engineer II Date 01-14-82

(This space for State Use)

APPROVED BY Jersey Benton TITLE DATE

CONDITIONS OF APPROVAL

180
2/18/82
UNLESS DRILLING UNDERWAY

Correction
NEW MEXICO OIL CONSERVATION COMMISSION
WELL LOCATION AND ACREAGE DEDICATION PLAT

Form C-102
Supersedes C-128
Effective 1-1-65

All distances must be from the outer boundaries of the Section.

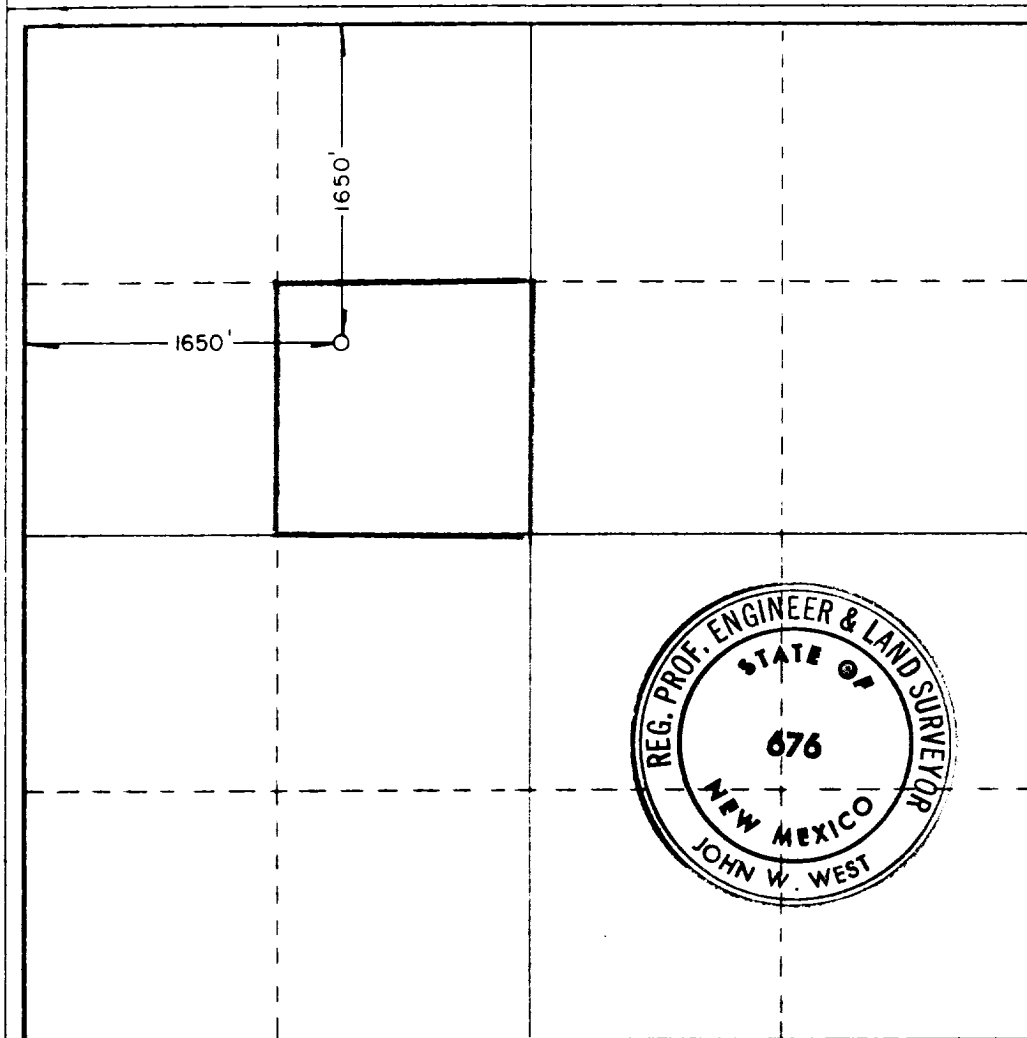
Operator Energy Reserve Group, Inc.		Lease Gulf State		Well No. 5	
Tract Letter F	Section 9	Township 18 South	Range 35 East	County Lea	
Actual Footage Location of Well: 1650 feet from the north line and 1650 feet from the west line.					
Ground Level Elev. 3942.0'	Producing Formation Abo Detrital		Pool Buckeye (Abo)		Dedicated Acreage: 40 Acres

1. Outline the acreage dedicated to the subject well by colored pencil or hachure marks on the plat below.
2. If more than one lease is dedicated to the well, outline each and identify the ownership thereof (both as to working interest and royalty).
3. If more than one lease of different ownership is dedicated to the well, have the interests of all owners been consolidated by communitization, unitization, force-pooling, etc?

☐ Yes ☐ No If answer is "yes," type of consolidation _____

If answer is "no," list the owners and tract descriptions which have actually been consolidated. (Use reverse side of this form if necessary.) _____

No allowable will be assigned to the well until all interests have been consolidated (by communitization, unitization, forced-pooling, or otherwise) or until a non-standard unit, eliminating such interests, has been approved by the Commission.



CERTIFICATION

I hereby certify that the information contained herein is true and complete to the best of my knowledge and belief.

R. L. Robertson

Name

R. L. Robertson

Position

Production Engineer II

Company

Energy Reserves Group, Inc.

Date

January 15, 1982

I hereby certify that the well location shown on this plat was plotted from field notes of actual surveys made by me or under my supervision, and that the same is true and correct to the best of my knowledge and belief.

Date Surveyed

10-5-81

Registered Professional Engineer
and/or Land Surveyor

John W. West

Certificate No. **JOHN W. WEST 676**
PATRICK A. ROMERO 6883
Ronald J. Eidson 3239

0 330 660 990 1320 1650 1980 2310 2640 2970 3300 3630 3960 4290 4620 4950 5280 5610 5940 6270 6600