

N. M. OIL CONS. COMMISSION  
P. O. BOX 1930  
HOBBS, NEW MEXICO 88240  
DEPARTMENT OF THE INTERIOR  
GEOLOGICAL SURVEYSUBMIT IN \_\_\_\_\_ LICATE\*  
(Other instructions on  
reverse side)Form approved,  
Budget Bureau No. 42-R1425.30-025-27759  
5. LEASE DESIGNATION AND SERIAL NO.

NM 15920

6. IF INDIAN, ALLOTTEE OR TRIBE NAME

7. UNIT AGREEMENT NAME

8. FARM OR LEASE NAME

Howe "TG" Federal

9. WELL NO.

1

10. FIELD AND POOL, OR WILDCAT

Undes. Bone Springs

11. SEC., T., R., M., OR BLK.  
AND SURVEY OR AREA

Sec. 30-T18S-R34E

12. COUNTY OR PARISH 13. STATE

Lea

NM

## 1a. TYPE OF WORK

DRILL ☒DEEPEN ☐PLUG BACK ☐

## b. TYPE OF WELL

OIL  
WELL ☒GAS  
WELL ☐

OTHER

SINGLE  
ZONE ☐MULTIPLE  
ZONE ☐

## 2. NAME OF OPERATOR

Yates Petroleum Corporation

## 3. ADDRESS OF OPERATOR

207 S. 4th, Artesia, New Mexico 88210

## 4. LOCATION OF WELL (Report location clearly and in accordance with any State requirements.\*)

At surface

1980' FSL and 1830' FWL

At proposed prod. zone

same

## 14. DISTANCE IN MILES AND DIRECTION FROM NEAREST TOWN OR POST OFFICE\*

49 miles SSE of Artesia, New Mexico.

## 15. DISTANCE FROM PROPOSED\*

LOCATION TO NEAREST

PROPERTY OR LEASE LINE, FT.

(Also to nearest drlg. unit line, if any)

510'

## 18. DISTANCE FROM PROPOSED LOCATION\*

TO NEAREST WELL, DRILLING, COMPLETED,  
OR APPLIED FOR, ON THIS LEASE, FT.

n/a

## 16. NO. OF ACRES IN LEASE

80

## 19. PROPOSED DEPTH

10,550

17. NO. OF ACRES ASSIGNED  
TO THIS WELL

320

## 20. ROTARY OR CABLE TOOLS

Rotary

## 21. ELEVATIONS (Show whether DF, RT, GR, etc.)

3894.1' GL

## 22. APPROX. DATE WORK WILL START\*

## 23.

## PROPOSED CASING AND CEMENTING PROGRAM

SIZE OF HOLE	SIZE OF CASING	WEIGHT PER FOOT	SETTING DEPTH	QUANTITY OF CEMENT
17 1/2"	13 3/8"	48# J-55	350'	350 sx circulated
12 1/4"	8 5/8"	24# J-55	5150'	550 sx circulated
7 7/8"	5 1/2 or 4 1/2"	17#-15.5# K&N	TD	350 - 400 sx
		11.5# - 10.5# K&N		

We propose to drill and test the Morrow and intermediate formations. Approximately 350' of surface casing will be set to shut off gravel and cavings, cement circulated. Intermediate casing will be set at approximately 1700' and cemented to the surface. If commercial pay is encountered, will run 5 1/2" or 4 1/2" casing, cemented with a minimum of 600' cover, perforate and stimulate as needed for production.

MUD PROGRAM: FW gel and LCM 1700', water to 6400' (2% KCL at 400'); starch-driskak KCL to 8500'; flosal, driskak, KCL to TD.

BOP PROGRAM: BOP's & hydril on 8 5/8" casing tested, pipe rams daily, blinds on trips.

IN ABOVE SPACE DESCRIBE PROPOSED PROGRAM: If proposal is to deepen or plug back, give data on present productive zone and proposed new productive zone. If proposal is to drill or deepen directionally, give pertinent data on subsurface locations and measured and true vertical depths. Give blowout preventer program, if any.

## 24.

SIGNED



TITLE

Regulatory Manager

DATE

2/19/82

(This space for Federal or State office use)

PERMIT NO.

APPROVED BY

CONDITIONS OF APPROVAL, IF ANY:

APPROVED

FEB 25 1982

JAMES A. GILLHAM  
DISTRICT SUPERVISOR

TITLE

APPROVAL SUBJECT TO  
GENERAL REQUIREMENTS AND  
SPECIAL STIPULATIONS  
ATTACHED

DATE

NEW MEXICO OIL CONSERVATION COMMISSION  
WELL LOCATION AND ACREAGE DEDICATION PLAT

Form C-102  
Supersedes C-128  
Effective 1-1-65

All distances must be from the outer boundaries of the Section.

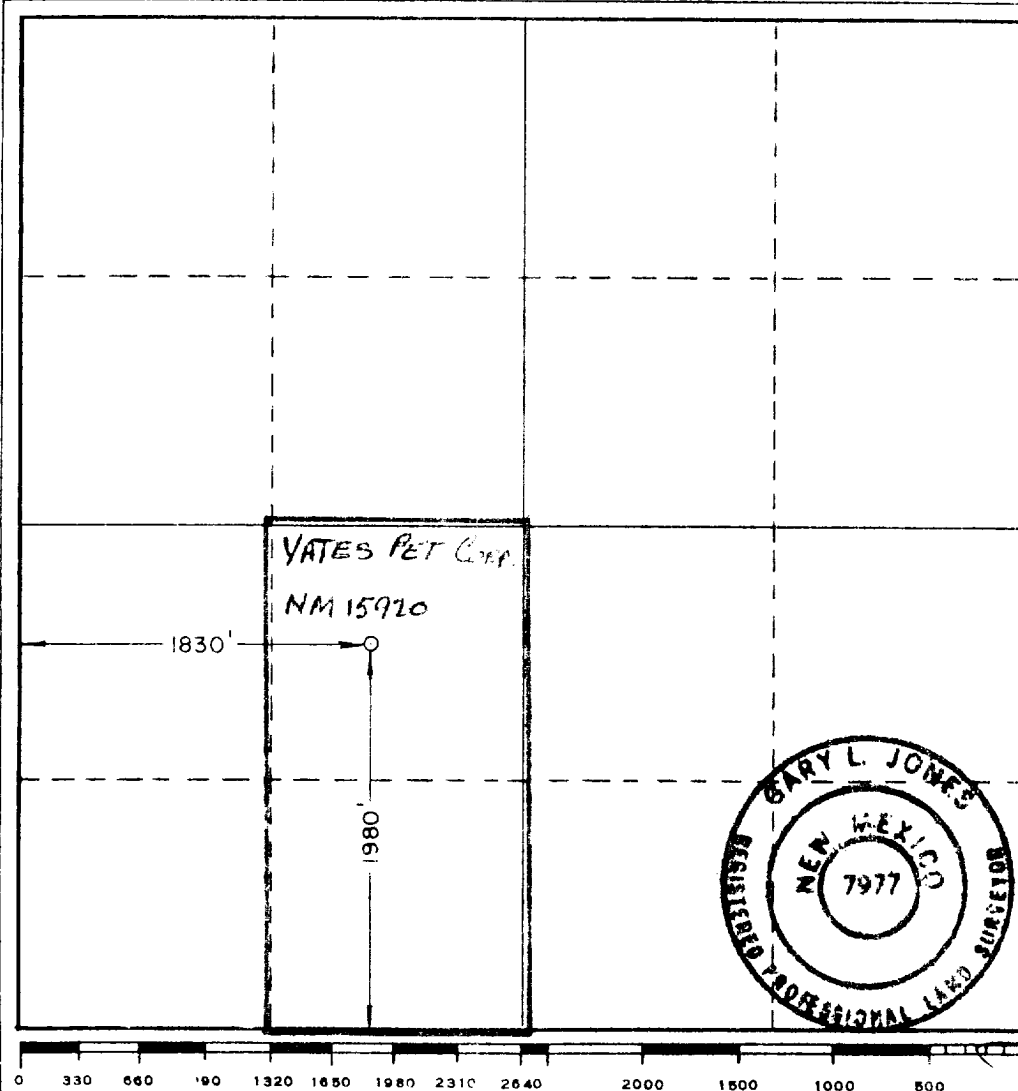
Operator <b>YATES PETROLEUM CORPORATION</b>			Lease <b>Howe TG Federal</b>		Well No. <b>1</b>
Unit Letter <b>K</b>	Section <b>30</b>	Township <b>18 South</b>	Range <b>34 East</b>	County <b>Lea</b>	
Actual Footage Location of Well: <b>1980</b> feet from the <b>South</b> line and <b>1830</b> feet from the <b>West</b> line					
Ground Level Elev. <b>3894.1'</b>	Producing Formation <b>Bone Springs</b>		Pool <b>Under Bone Springs</b>		Dedicated Acreage: <b>80</b> Acres

1. Outline the acreage dedicated to the subject well by colored pencil or hachure marks on the plat below.
2. If more than one lease is dedicated to the well, outline each and identify the ownership thereof (both as to working interest and royalty).
3. If more than one lease of different ownership is dedicated to the well, have the interests of all owners been consolidated by communitization, unitization, force-pooling, etc?

☐ Yes ☐ No If answer is "yes," type of consolidation \_\_\_\_\_

If answer is "no," list the owners and tract descriptions which have actually been consolidated. (Use reverse side of this form if necessary.) \_\_\_\_\_

No allowable will be assigned to the well until all interests have been consolidated (by communitization, unitization, forced-pooling, or otherwise) or until a non-standard unit, eliminating such interests, has been approved by the Commission.



CERTIFICATION

I hereby certify that the information contained herein is true and complete to the best of my knowledge and belief.

*Gliserio Rodriguez*  
Name

Gliserio Rodriguez

Position

Regulatory Manager

Company

Yates Petroleum Corporation

Date

2/18/82

I hereby certify that the well location shown on this plat was plotted from field notes of actual surveys made by me or under my supervision, and that the same is true and correct to the best of my knowledge and belief.

Date Surveyed

2/16/82

Registered Professional Engineer and/or Land Surveyor

*Gary L. Jones*

Certificate No.

7977

**RECEIVED**

**FEB 26 1982**

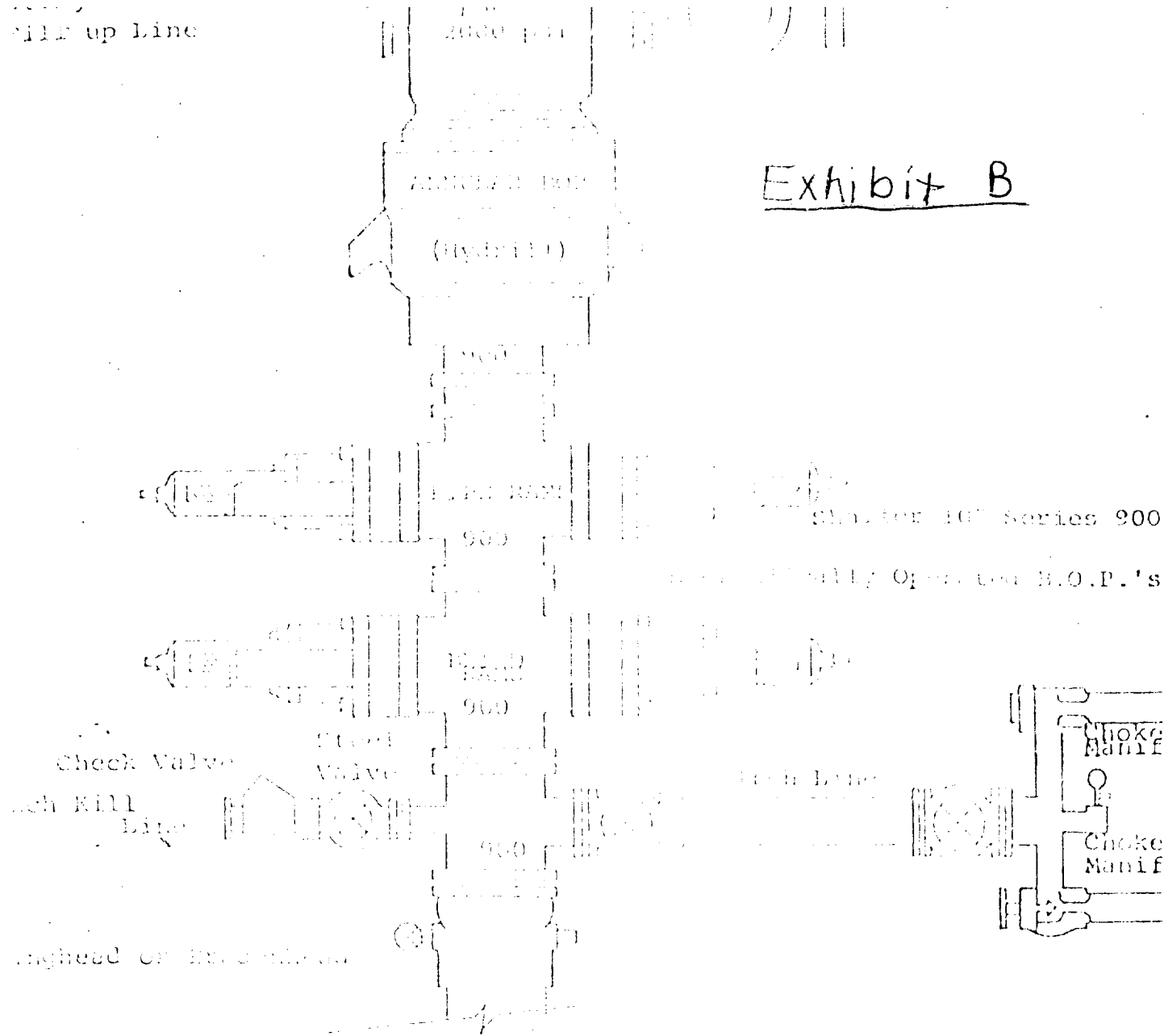
**O.C.S.  
NEWS OFFICE**

Fill up line

2000 psi

2 11

Exhibit B



FOLLOWING ARE THE BASIC RULES FOR THE WELLHEAD OPERATOR

- All prevention tools should be installed prior to drilling or running in.
- Choke control should be maintained at all times.
- Fill line should be filled with fluid at all times.
- All connections should be made in a safe manner.
- hole or a leak in the line should be reported immediately.
- The available fluid should be maintained at all times.
- required with the fluid level.
- All connections to and from the wellhead should be made in a safe manner.
- to that of the wellhead.
- Inside the wellhead should be maintained at all times.
- Operating controls should be maintained at all times.
- hole must be closed and the wellhead should be secured.
- not responsible for the wellhead or the well.
- D. P. float must be installed and maintained at all times.

RECEIVED

FEB 26 1984

CLERK  
HOUSE OFFICE

111