

P. O. BOX 1980 UN. D STATES  
HOBBS, NEW MEXICO 88240  
DEPARTMENT OF THE INTERIOR  
GEOLOGICAL SURVEY(Other instructi  
reverse side,

30-025-27940

## APPLICATION FOR PERMIT TO DRILL, DEEPEN, OR PLUG BACK

## 1a. TYPE OF WORK

DRILL ☒DEEPEN ☐PLUG BACK ☐

## b. TYPE OF WELL

OIL  
WELL ☒GAS  
WELL ☐OTHER ☐SINGLE  
ZONE ☒MULTIPLE  
ZONE ☐

## 2. NAME OF OPERATOR

Sun Exploration &amp; Production Co.

## 3. ADDRESS OF OPERATOR

P.O. Box 1861, Midland, Texas 79702

## 4. LOCATION OF WELL (Report location clearly and in accordance with any State requirements.\*)

At surface

Unit Ltr "J" 1650' FSL &amp; 1980' FEL

At proposed prod. zone

## 14. DISTANCE IN MILES AND DIRECTION FROM NEAREST TOWN OR POST OFFICE\*

14 miles South from Maljamar, NM

## 10. DISTANCE FROM PROPOSED\*

LOCATION TO NEAREST  
PROPERTY OR LEASE LINE, FT.  
(Also to nearest drlg. unit line, if any)

1650'

## 16. NO. OF ACRES IN LEASE

320

17. NO. OF ACRES ASSIGNED  
TO THIS WELL

160

18. DISTANCE FROM PROPOSED LOCATION\*  
TO NEAREST WELL, DRILLING, COMPLETED,  
OR APPLIED FOR, ON THIS LEASE, FT.

1155'

## 19. PROPOSED DEPTH

11,000

## 20. ROTARY OR CABLE TOOLS

Rotary

## 21. ELEVATIONS (Show whether DF, RT, GR, etc.)

3624' GR

## 22. APPROX. DATE WORK WILL START\*

ASAP

## 23.

## PROPOSED CASING AND CEMENTING PROGRAM

SIZE OF HOLE	SIZE OF CASING	WEIGHT PER FOOT	SETTING DEPTH	QUANTITY OF CEMENT
17½	13-3/8	48#	400	350sx <del>CIRCULATE</del>
12½	8-5/8	24# 28#	4400	1850sx <del>CIRCULATE</del>
7-7/8	5-1/2	15.5#, 17#	10900	960sx

See Attachment

IN ABOVE SPACE DESCRIBE PROPOSED PROGRAM: If proposal is to deepen or plug back, give data on present productive zone and proposed new productive zone. If proposal is to drill or deepen directionally, give pertinent data on subsurface locations and measured and true vertical depths. Give blowout preventer program, if any.

24.

SIGNED



TITLE Acctg. Assist II

DATE 8/26/82

(This space for Federal or State office use)

PERMIT NO.

GEORGE H. STEWART

APPROVAL DATE

SEP 13 1982

APPROVED BY

CONDITIONS OF APPROVAL, IF ANY  
JAMES A. GILLHAM  
DISTRICT SUPERVISOR

TITLE

DATE

\*See Instructions On Reverse Side

NEW MEXICO OIL CONSERVATION COMMISSION  
WELL LOCATION AND ACREAGE DEDICATION PLAT

Form C-102  
Supersedes C-128  
Effective 1-1-65

All distances must be from the outer boundaries of the Section

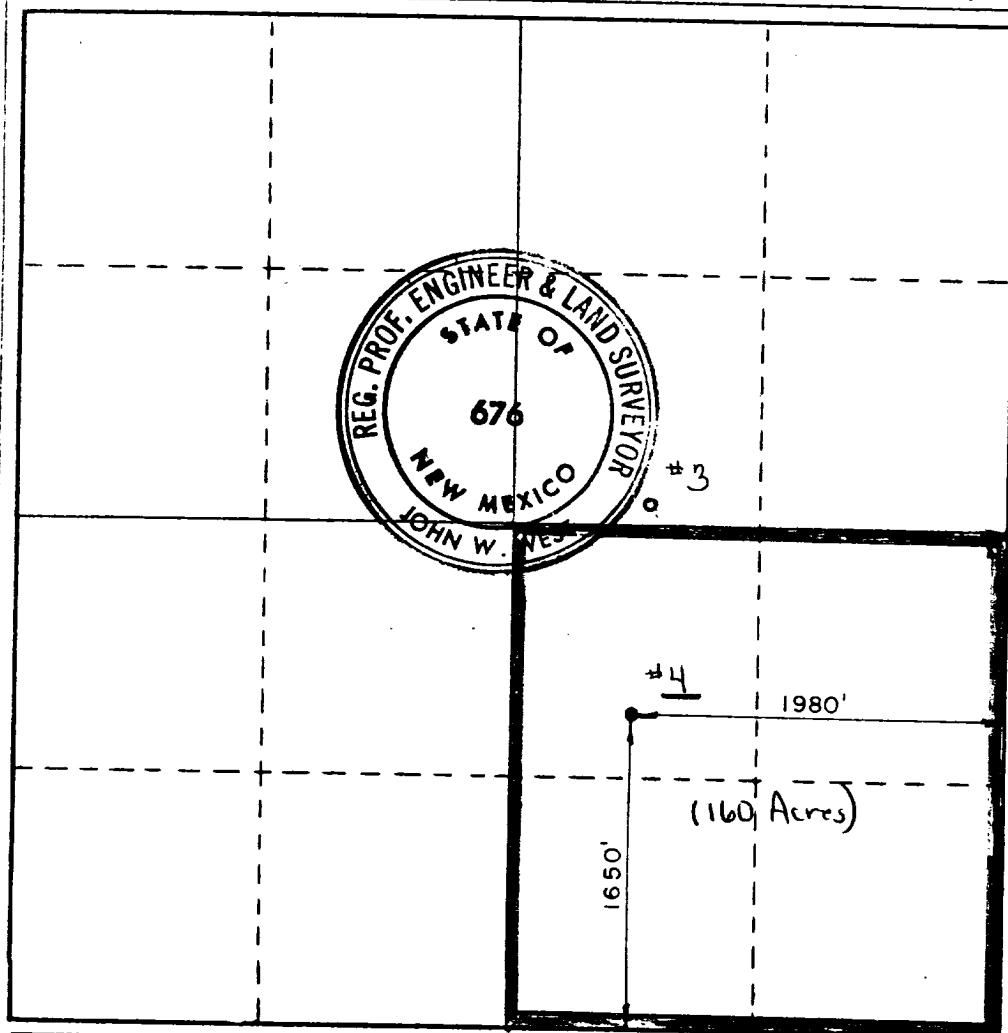
Operator <b>SUN EXP. &amp; PRODUCTION CO.</b>			Lease <b>JENNINGS "A" FEDERAL</b>			Well No. <b>4</b>
Unit Letter <b>J</b>	Section <b>15</b>	Township <b>19 S</b>	Range <b>32 E</b>	County <b>LEA COUNTY</b>		
Actual Footage Location of Well: <b>1650'</b> feet from the <b>SOUTH</b> line and <b>1980'</b> feet from the <b>EAST</b> line						
Ground Level Elev. <b>3624.0</b>	Producing Formation <b>Bone Spring</b>		Pool <b>E. Lusk (Bone Spring)</b>		Dedicated Acreage: <b>160</b> Acres	

1. Outline the acreage dedicated to the subject well by colored pencil or hatchure marks on the plat below.
2. If more than one lease is dedicated to the well, outline each and identify the ownership thereof (both as to working interest and royalty).
3. If more than one lease of different ownership is dedicated to the well, have the interests of all owners been consolidated by communitization, unitization, force-pooling, etc?

☐ Yes ☐ No If answer is "yes," type of consolidation \_\_\_\_\_

If answer is "no," list the owners and tract descriptions which have actually been consolidated. (Use reverse side of this form if necessary.) \_\_\_\_\_

No allowable will be assigned to the well until all interests have been consolidated (by communitization, unitization, forced-pooling, or otherwise) or until a non-standard unit, eliminating such interests, has been approved by the Commission.



CERTIFICATION

I hereby certify that the information contained herein is true and complete to the best of my knowledge and belief.

*Dee Ann Kemp*  
Name

Dee Ann Kemp

Position

Accounting Asst. II

Company

Sun Exploration & Production

Date

8-26-82

I hereby certify that the well location shown on this plat was plotted from field notes of actual surveys made by me or under my supervision, and that the same is true and correct to the best of my knowledge and belief.

Date Surveyed

**AUGUST 13, 1982**

Registered Professional Engineer and/or Land Surveyor

*John W. West*

Certificate No. **JOHN W. WEST 676**  
**PATRICK A. ROMERO 6468**  
**Ronald J. Eidson 3239**