

NEW MEXICO OIL CONSERVATION COMMISSION WELL LOCATION AND ACREAGE DEDICATION PLAT

Form 1-102
Subsidiary C-128
Effective 1-1-85

All distances must be from the outer boundaries of the Section

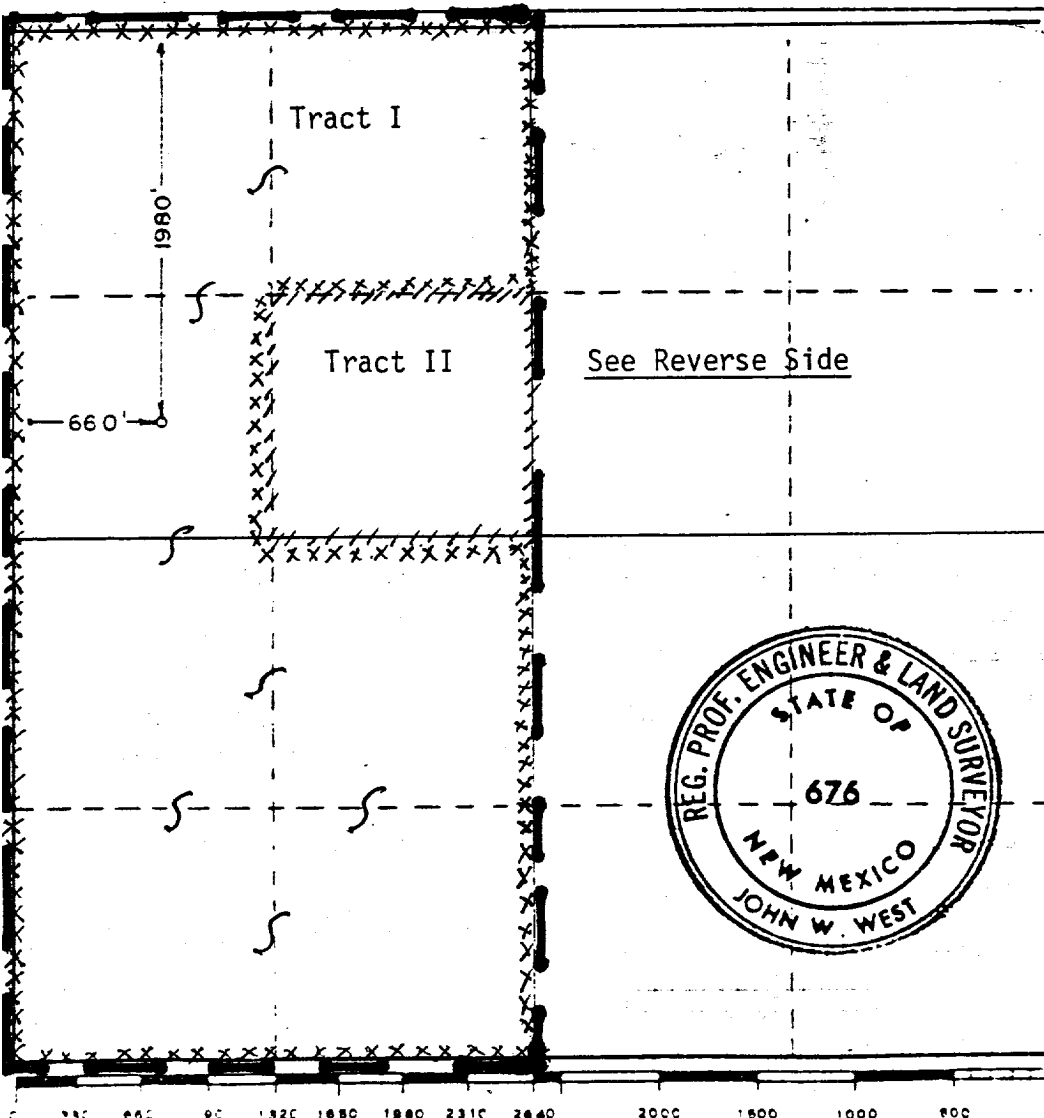
Operator Phillips Oil Company		Lease STATE GAO 1-2 STATE "COM"		Well No. 1
Section E	Section 2	Township 19 SOUTH	Range 32 EAST	County LEA
Actual Field Location of Well:				
1980 feet from the NORTH line and		660 feet from the WEST line		
Ground Level Elev. 3690.9	Producing Formation Morrow	Pool North Lusk Morrow	Dedicated Acreage: 320 Acres	

- Outline the acreage dedicated to the subject well by colored pencil or hachure marks on the plat below.
- If more than one lease is dedicated to the well, outline each and identify the ownership thereof (both as to working interest and royalty). See below and reverse side.
- If more than one lease of different ownership is dedicated to the well, have the interests of all owners been consolidated by communitization, unitization, force-pooling, etc?

☒ Yes ☐ No If answer is "yes," type of consolidation Communitization

If answer is "no," list the owners and tract descriptions which have actually been consolidated (Use reverse side of this form if necessary.)

No allowable will be assigned to the well until all interests have been consolidated (by communitization, unitization, forced-pooling, or otherwise) or until a non-standard unit, eliminating such interests, has been approved by the Commission.



CERTIFICATION

I hereby certify that the information contained herein is true and complete to the best of my knowledge and belief.

T. Harold McLemore
Name

T. Harold McLemore

Position

Regulation & Pro. Supvr.

Company

Phillips Oil Company

Date

5-15-85

I hereby certify that the well location shown on this plat was plotted from field notes of actual surveys made by me or under my supervision, and that the same is true and correct to the best of my knowledge and belief.

Date Surveyed

10/11/82

Registered Professional Engineer

and

John W. West

Certificate No. **JOHN W. WEST 676**
PATRICK A. ROMERO 6863
Ronald J. Eidson 3239

Communitization:

Tract I - N/2 and SW/4 of NW/4, and SW/4

Working Interest: J. M. Huber and Phillips Oil Company

Royalty Interest: State of New Mexico - State Lease No.
LG888

Tract II - SE/4 NW/4

Working Interest: Gulf Oil Exploration and Production
Company

Royalty Interest: State of New Mexico - State Lease No.
LG2898

RECEIVED

MAY 20 1985

O.C.D.
HOBBS OFFICE