

NEW MEXICO OIL CONSERVATION COMMISSION  
 LOCATION AND ACREAGE DEDICATION PLAT

Form C-102  
 Supers. C-128  
 8-1-65

All distances must be from the outer boundaries of the Section.

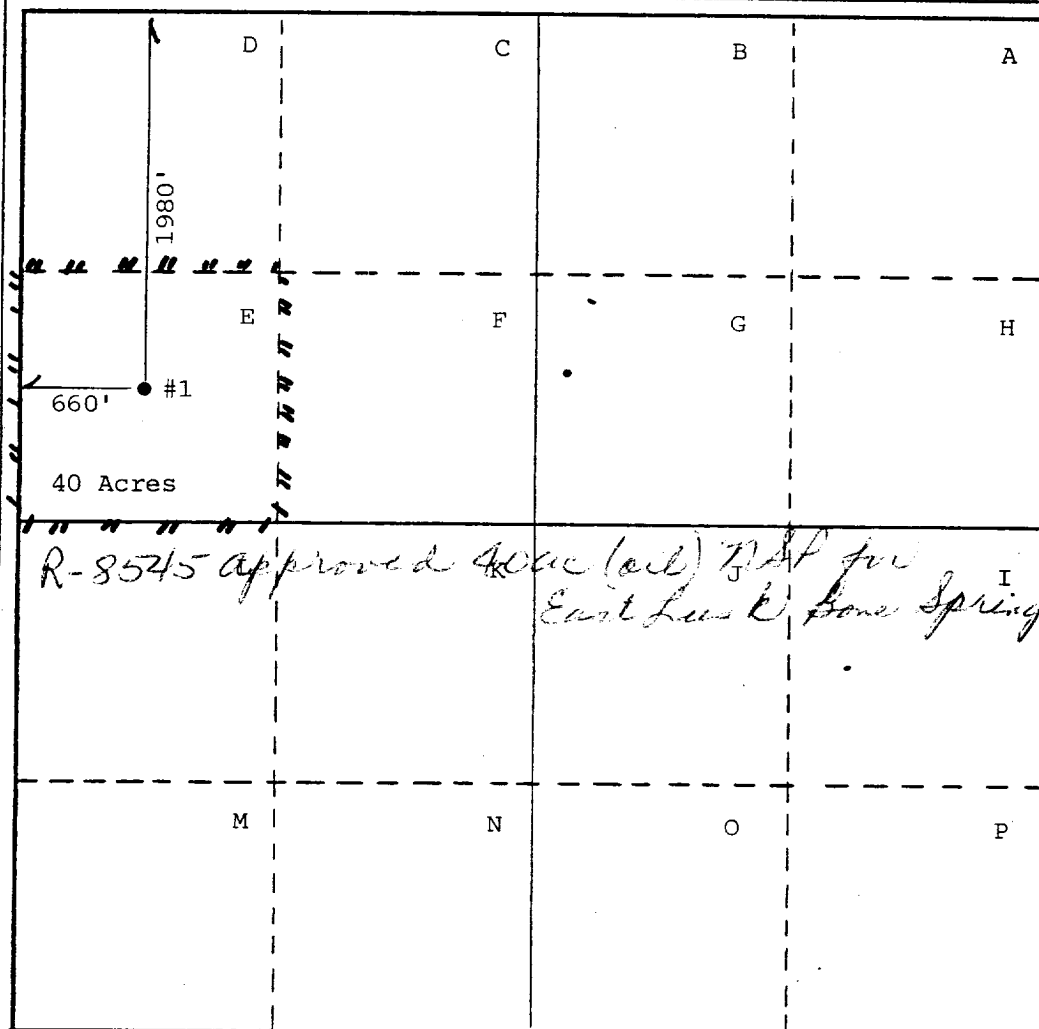
Operator Phillips Petroleum Company		Lease State 1-2		Well No. 1
Unit Letter E	Section 2	Township 19-S	Range 32-E	County Lea
Actual Footage Location of Well: 1980 feet from the North line and 660 feet from the West line				
Ground Level Elev. 3681' GR	Producing Formation Bone Springs	Pool Undesignated - Bone Springs	Dedicated Acreage: 40 Acres	

1. Outline the acreage dedicated to the subject well by colored pencil or hachure marks on the plat below.
2. If more than one lease is dedicated to the well, outline each and identify the ownership thereof (both as to working interest and royalty).
3. If more than one lease of different ownership is dedicated to the well, have the interests of all owners been consolidated by communitization, unitization, force-pooling, etc?

☐ Yes ☐ No If answer is "yes," type of consolidation \_\_\_\_\_

If answer is "no," list the owners and tract descriptions which have actually been consolidated. (Use reverse side of this form if necessary.) \_\_\_\_\_

No allowable will be assigned to the well until all interests have been consolidated (by communitization, unitization, forced-pooling, or otherwise) or until a non-standard unit, eliminating such interests, has been approved by the Commission.



CERTIFICATION

I hereby certify that the information contained herein is true and complete to the best of my knowledge and belief.

Name  
W. J. Mueller

Position  
Eng. Supervisor, Reservoir

Company  
Phillips Petroleum Company

Date  
1/5/86

I hereby certify that the well location shown on this plat was plotted from field notes of actual surveys made by me or under my supervision, and that the same is true and correct to the best of my knowledge and belief.

10/31/82

Date Surveyed  
John W. West

Registered Professional Engineer  
and/or Land Surveyor

Certificate No. John West #676  
Patrick A Romero #6663

Ronald J. Eidson #3239

