

STATE OF NEW MEXICO
ENERGY AND MINERALS DEPARTMENT

OIL CONSERVATION DIVISION

P. O. BOX 2088
SANTA FE, NEW MEXICO 87501

Form C-101
Revised 10-1-78

NO. OF COPIES RECEIVED	
DISTRIBUTION	
SANTA FE	
FILE	
U.S.G.S.	
LAND OFFICE	
OPERATOR	

API No. 30-025-27995

APPLICATION FOR PERMIT TO DRILL, DEEPEN, OR PLUG BACK

5A. Indicate Type of Lease
STATE ☒ FEE ☐
5. State Oil & Gas Lease No.
B-2148

7. Unit Agreement Name
8. Farm or Lease Name
Leamex
9. Well No.
35
10. Field and Pool, or Wildcat
Malmamar Gb/SA
12. County
Lea

1a. Type of Work
b. Type of Well
DRILL ☐ DEEPEN ☐ PLUG BACK ☒
OIL WELL ☒ GAS WELL ☐ OTHER ☐
SINGLE ZONE ☒ MULTIPLE ZONE ☐
2. Name of Operator
Phillips Petroleum Company
3. Address of Operator
Room 401, 4001 Penbrook, Odessa, Texas 79762
4. Location of Well
UNIT LETTER K LOCATED 2130 FEET FROM THE South LINE
AND 1980 FEET FROM THE West LINE OF SEC. 22 TWP. 17-S RCE. 33-E NMPM
19. Proposed Depth
ID 6300
PBT 6273'
19A. Formation
Grayburg/San Andres Rotary
20. Rotary or C.T.
21. Drilling Contractor
Warton
22. approx. Date Work will start
Upon Approval
23. Elevations (Show whether DF, RL, etc.)
4149' GR, 4161' DF
21A. Kind & Status Plug. Bond
Blanket

PROPOSED CASING AND CEMENT PROGRAM

SIZE OF HOLE	SIZE OF CASING	WEIGHT PER FOOT	SETTING DEPTH	SACKS OF CEMENT	EST. TOP
12-1/4"	8-5/8"	24#, K-55	1497'	550 sx Class	C w/15% DD.
2% CaCl. Circd 100sx to surface.					
7-7/8"	4-1/2"	11.6#, N-80	6298'	700 sx TLW w/	10% DD, Followed
by 600 sx Class C neat. TOC 950'.					

Use Mud additives as required for control.

BOP Equip: Series 900, 3000# WP, double w/one set pipe rams, one set blind rams, manually operated.

IN ABOVE SPACE DESCRIBE PROPOSED PROGRAM; IF PROPOSAL IS TO DEEPEN OR PLUG BACK, GIVE DATA ON PRESENT PRODUCTIVE ZONE AND PROPOSED NEW PRODUCTIVE ZONE. GIVE BLOWOUT PREVENTER PROGRAM, IF ANY.

I hereby certify that the information above is true and complete to the best of my knowledge and belief.
Signed: W. J. Mueller Sr. Engineering Specialist Date July 29, 1983
(This space for State Use)

ORIGINAL SIGNED BY JERRY SEXTON

APPROVED BY DISTRICT 1 SUPERVISOR TITLE DATE AUG 4 1983
CONDITIONS OF APPROVAL, IF ANY:

NEW MEXICO OIL CONSERVATION COMMISSION
WELL LOCATION AND ACREAGE DEDICATION AT

Form C-102
Supersedes C-128
Effective 1-1-65

All distances must be from the outer boundaries of the Section.

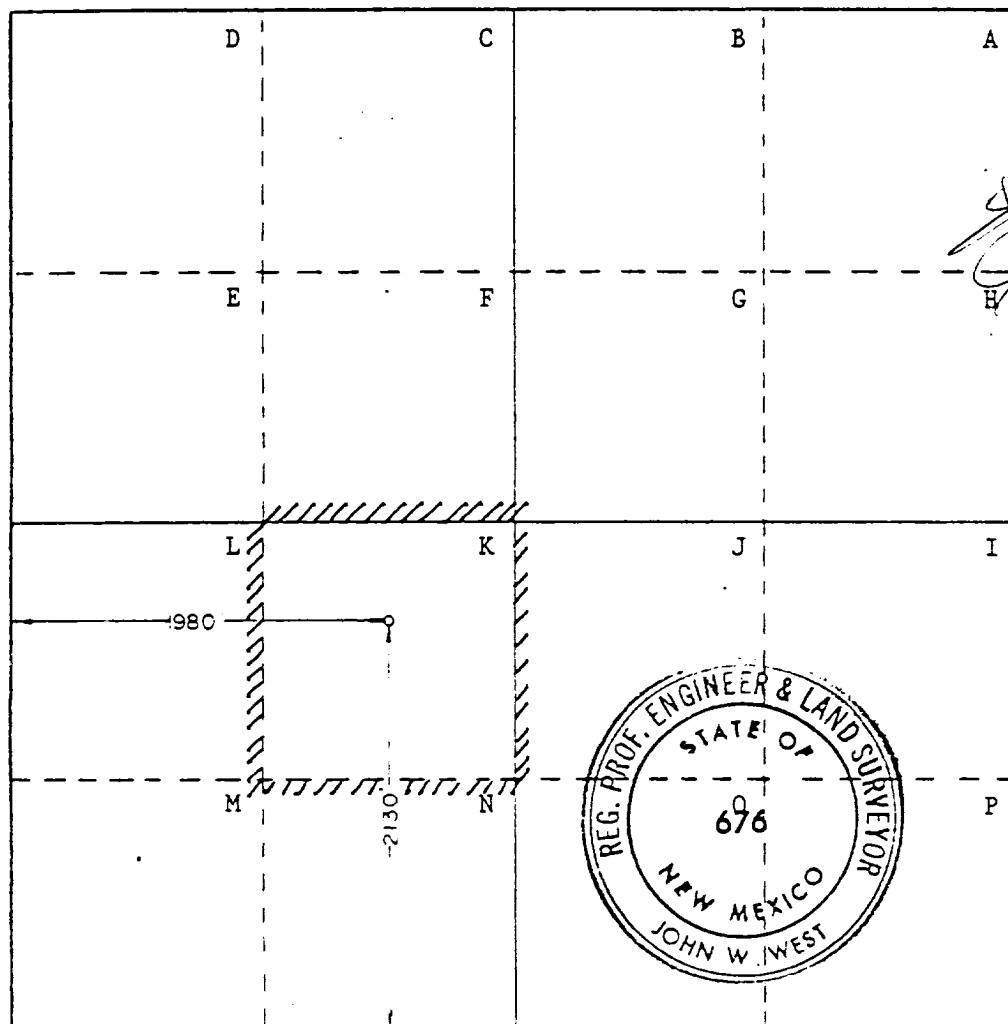
Operator PHILLIPS PETROLEUM COMPANY			Lease LEAMEX		Well No. 35
Section Letter K	Section 22	Township 17 SOUTH	Range 33 EAST	County LEA	
Actual Footage Location of Well: 2130 feet from the SOUTH line and 1980 feet from the WEST line					
Ground Level Elev. 4152.4	Producing Formation Maljamar Gb/SA		Pool Leamex (Paddock)		Dedicated Acreage: 40 Acres

- Outline the acreage dedicated to the subject well by colored pencil or hachure marks on the plat below.
- If more than one lease is dedicated to the well, outline each and identify the ownership thereof (both as to working interest and royalty).
- If more than one lease of different ownership is dedicated to the well, have the interests of all owners been consolidated by communitization, unitization, force-pooling, etc?

☐ Yes ☐ No If answer is "yes," type of consolidation _____

If answer is "no," list the owners and tract descriptions which have actually been consolidated. (Use reverse side of this form if necessary.) _____

No allowable will be assigned to the well until all interests have been consolidated (by communitization, unitization, forced-pooling, or otherwise) or until a non-standard unit, eliminating such interests, has been approved by the Commission.



CERTIFICATION

I hereby certify that the information contained herein is true and complete to the best of my knowledge and belief.

[Signature]
W. J. Mueller

Senior Engineering Specialist
Position
Phillips Petroleum Company
Company

Date
July 29, 1983

I hereby certify that the well location shown on this plat was plotted from field notes of actual surveys made by me or under my supervision, and that the same is true and correct to the best of my knowledge and belief.

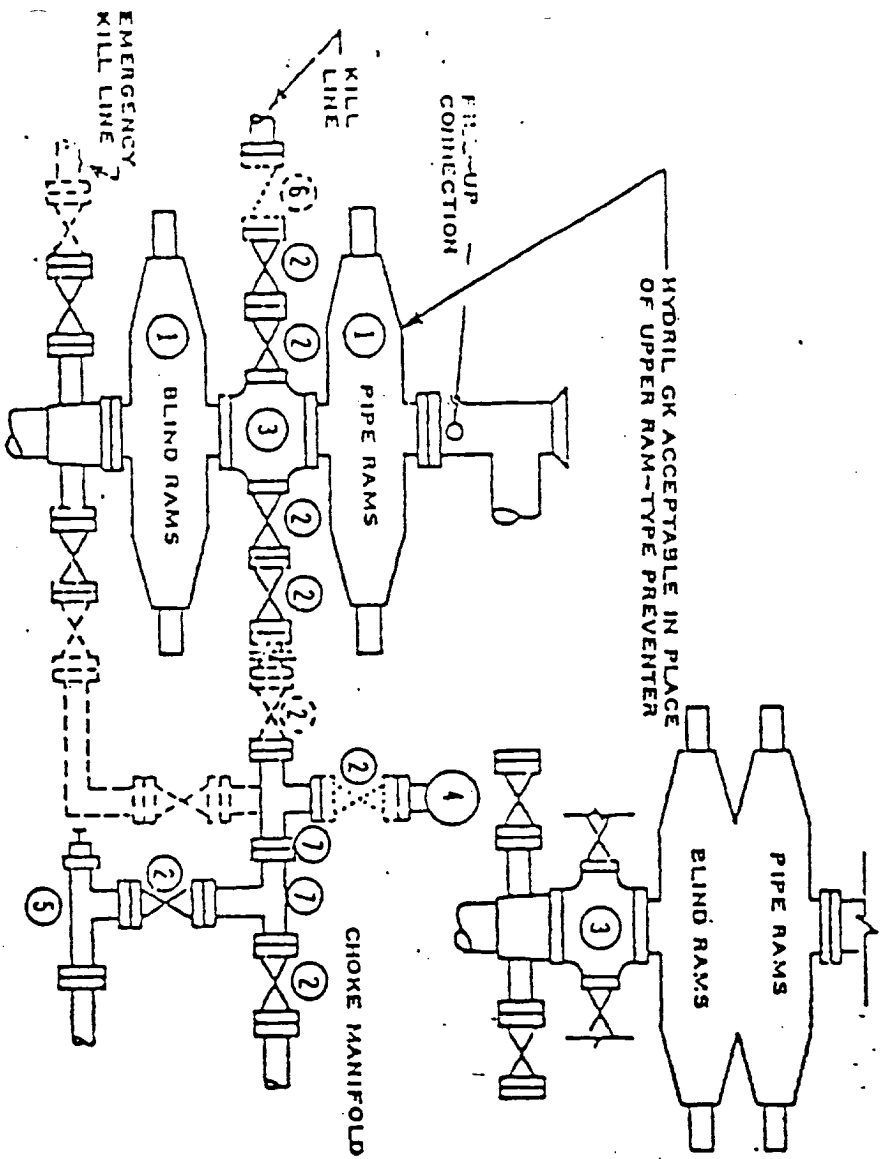
Date Surveyed
10/05/82

Registered Professional Engineer
and/or Land Surveyor

[Signature]

Certificate No. **JOHN W. WEST 676**
PATRICK A. ROMERO 6863
Ronald J. Eidson 3239

DOUBLE PREVENTER OPTION



- ① SERIES 900 RAM-TYPE BOP
- ② 2" SERIES 900 VALVE
- ③ SERIES 900 DRILLING SPOOL
- ④ 2" MUD PRESSURE GAUGE
- ⑤ 2" SERIES 900 CHOKE
- ⑥ 2" SERIES 900 CHECK VALVE
- ⑦ 2" SERIES 900 STEEL TEE

NOTES:

1. 3000 PSI WP CLAMP HUGS MAY BE SUBSTITUTED FOR FLANGES
2. VALVES MAY BE EITHER HAND OR POWER OPERATED BUT, IF POWER OPERATED, THE VALVES FLANGED TO THE BOP RUN MUST BE CAPABLE OF BEING OPENED AND CLOSED MANUALLY OR CLOSE ON POWER FAILURE AND BE CAPABLE OF BEING OPENED MANUALLY

.....OPTIONAL EQUIPMENT

PHILLIPS PETROLEUM COMPANY

3000 PSI WORKING PRESSURE
BLOWOUT PREVENTER HOOK-UP
(SERIES 900 FLANGES OR BETTER)